



PRESENTS

THINKING  
**SHAKESPEARE**  
LIVE!

Saturday, June 6, 2015 at 11:00 a.m.

Donald and Darlene Shiley Stage  
Old Globe Theatre  
Conrad Prebys Theatre Center

# WELCOME




DOUGLAS GATES

Managing Director Michael G. Murphy and  
Artistic Director Barry Edelstein.

Shakespeare is in The Old Globe's DNA. For over 80 years, the Bard has been central to this theatre's identity. He's our house playwright, an essential part of our mission, and a yardstick by which we measure

the new work we develop on our stages. As we continue to reach out into the community and serve new audiences, Shakespeare will be our most important voice. We hope that *Thinking Shakespeare Live!* will help you hear and understand that voice more clearly, perhaps helping you start a new relationship with the great playwright or learn new ways to spend time with him.

In the years ahead The Old Globe will be redoubling its commitment to humanities programming. This means more lectures, more exhibits, more opportunities for conversation. We look forward to exploring new and innovative ways to foster engagement between our audience and the art we make, and we hope to see you there!

  
Barry Edelstein  
Artistic Director

  
Michael G. Murphy  
Managing Director

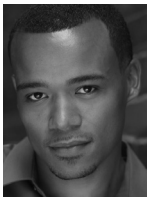
*Thinking Shakespeare Live!* is presented without intermission.



**MEG GIBSON**

currently appears in The Old Globe's production of *Rich Girl*. She was last seen at the Globe in 1985 in *A Midsummer's Night Dream* directed by Jack O'Brien and *Painting Churches*.

Her New York credits include, for The Public Theater, *Talking About Race* (Public Forum, The Aspen Institute), *Measure for Measure* (Mobile Shakespeare Unit), *King Lear*, *The Ride Down Mt. Morgan*, *Casanova*, *Fen*, and *Temptation*. Her other Off Broadway credits are *Human Error* (Atlantic Theater Company), *Slipping* (Rattlestick Playwrights Theater), *Roman Fever* (The Ensemble Studio Theatre), *Lapis Blue*, *Blood Red* (HERE Arts Center), *From Above* (Playwrights Horizons), *Messiah* (Manhattan Theatre Club), and *The Games* (Brooklyn Academy of Music's Next Wave Festival), and she was an Artist-in-Residence at Mabou Mines. Her regional work includes Mark Taper Forum, American Repertory Theater, Yale Repertory Theatre, Long Wharf Theatre, Hartford Stage, Actors Theatre of Louisville, Huntington Theatre Company, Williamstown Theatre Festival, Westport Country Playhouse, National Playwrights Conference at The Eugene O'Neill Theater Center, and Sundance Institute Theatre Lab. For television she has appeared in "Treme," "The Americans," "Rubicon," "Zero Hour," "Blue Bloods," "Sex and the City," and all versions of "Law & Order." Ms. Gibson's film credits include *Che*, *Dust*, *Amira and Sam*, *The Night Listener*, *Picture Perfect*, and *Dottie*.



**LEROY MCCLAIN**

will make his Globe debut later this month in the Shakespeare Festival production of *Twelfth Night*. He previously appeared on Broadway in *The History Boys* and *Cymbeline*. His Off

Broadway credits include *Milk Like Sugar*, *Born Bad*, *The Good Negro*, *Othello*, *Measure for Measure*, *Oroonoko*, *Bengal Tiger at the Baghdad Zoo*,

*Huck & Holden*, *In Search of Stanley Hammer*, and others. Regionally and internationally he has performed lead and major roles including *Safe House*, Walter Lee Younger in *A Raisin in the Sun*, the title role in *Hamlet*, *Partners*, *Clybourne Park*, *The Convert*, *Milk Like Sugar*, *The Piano Lesson*, *Antony and Cleopatra*, *Othello*, *The Whipping Man*, *The Good Negro*, *Blue/Orange*, *Elmina's Kitchen*, *Trouble In Mind*, *The Comedy of Errors*, *Rough Crossing*, *Richard II*, *Three Days of Rain*, *Private Eyes*, *A Midsummer Night's Dream*, *like sun fallin' in the mouth*, *The Taming of the Shrew*, *King Lear*, and others. Mr. McClain's film and television work includes "Madam Secretary," *The Happy Sad*, *The Adjustment Bureau*, *After*, *The Stage*, "Rubicon," "Law & Order: Criminal Intent," "Guiding Light," "Breaking In," and others. Mr. McClain received his M.F.A. in Acting at Yale University School of Drama and trained at Royal National Theatre of Great Britain.



**JAKE MILLGARD**

currently appears in the Globe's production of *Arms and the Man* as Russian Soldier, and he also went on as Captain Bluntschli in several recent performances.

He appeared in the Old Globe/University of San Diego Graduate Theatre Program productions of *Pericles*, *Prince of Tyre*, *Trelawny of the 'Wells'*, and, most recently, *Clybourne Park*. His New York credits include *Sex and Violence*, *On Campus*, and *Remembering Kimberly*. His regional credits include *Dracula* and *A Christmas Carol* (Actors Theatre of Louisville), *The Full Monty* (Northern Stage), and *Art*, *The Odd Couple*, and *Lips Together, Teeth Apart* (Mount Baker Theatre's Summer Repertory Theatre), and he went on tour with *From the Mixed-Up Files of Mrs. Basil E. Frankweiler*. He also appeared in the premiere of *The Open Road Anthology* (Humana Festival of New American Plays). Some of his television and film credits include "Grimm," *Pudding Face*, *Placebo*, and *Frank and Barry*.

**BARRY EDELSTEIN**

(Artistic Director) is a stage director, producer, author, and educator. Widely recognized as one of the leading American authorities on the works of Shakespeare, he has directed nearly half of the Bard’s plays. His Globe directing credits include *The Winter’s Tale*; *Othello*; and the West Coast premiere of novelist Nathan Englander’s play *The Twenty-seventh Man*. He also directed *All’s Well That Ends Well* as the inaugural production of Globe for All, a new producing platform that tours the works of Shakespeare to diverse communities throughout San Diego County. As Director of the Shakespeare Initiative at The Public Theater (2008-2012), Edelstein oversaw all of the company’s Shakespearean productions, as well as its extensive educational, community outreach, and artist-training programs. At The Public, he staged the world premiere of *The Twenty-seventh Man*, *Julius Caesar*, *The Merchant of Venice*, *Timon of*

*Athens*, and Steve Martin’s *WASP and Other Plays*. He was also Associate Producer of The Public’s Broadway production of *The Merchant of Venice* starring Al Pacino. From 1998-2003 he was Artistic Director of Classic Stage Company. Edelstein’s other Shakespearean directorial credits include *The Winter’s Tale* at Classic Stage Company; *As You Like It* starring Gwyneth Paltrow; and *Richard III* starring John Turturro. Additional credits include the Lucille Lortel Award-winning revival of Arthur Miller’s *All My Sons*; the world premiere of Steve Martin’s *The Underpants*, which he commissioned; and Molière’s *The Misanthrope* starring Uma Thurman in her stage debut. Edelstein has taught Shakespearean acting at The Juilliard School, NYU’s Graduate Acting Program, and the University of Southern California. His book *Thinking Shakespeare* is the standard text on American Shakespearean acting. He is also the author of *Bardisms: Shakespeare for All Occasions*.

Stage Manager..... Leila Knox

The Old Globe would like to acknowledge and thank its 2015 supporters of Shakespeare Education Programs:



Elaine and Dave Darwin | Darlene Marcos Shiley | Globe Guilders  
ResMed Foundation | The County of San Diego

Major funding provided by the City of San Diego Commission for Arts and Culture.

