

william shakespeare's

Twelfth Night

November 6-13, 2011

Sheryl and Harvey White Theatre
Conrad Prebys Theatre Center, The Old Globe

**THE OLD GLOBE / UNIVERSITY OF SAN DIEGO
GRADUATE THEATRE PROGRAM**



The Old Globe / University of San Diego
Graduate Theatre Program presents

Twelfth Night

by William Shakespeare
directed by Richard Seer

Sean Fanning
Scenic Design

Michelle Hunt Souza
Costume Design

Chris Rynne
Lighting Design

Kevin Anthenill
Sound Design
and Original Music

Ray Chambers
Text Coach

Jan Gist
Voice & Speech

Liz Shipman
Movement

Abraham Stoll
Dramaturge

George Yé
Fight Choreography

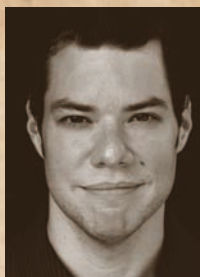
Nicole Ries
Stage Manager

CAST

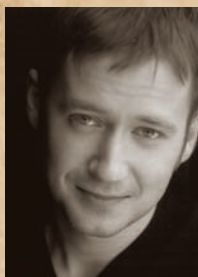
Captain/Priest/OfficerMatthew Bellows
Sir Toby BelchAdam Daveline
SebastianJeremy Fisher
MariaRachael Jenison
FesteJesse Jensen
FabianDanielle O'Farrell
ViolaAllison Spratt Pearce
OliviaDeborah Radloff
Curio/Olivia's LadyStephanie Roetzel
OrsinoChristopher Salazar
MalvolioJonathan Spivey
AntoniaWhitney Wakimoto
Sir Andrew AguecheekSean-Michael Wilkinson



**MATTHEW
BELLOWS**



ADAM DAVELINE



JEREMY FISHER



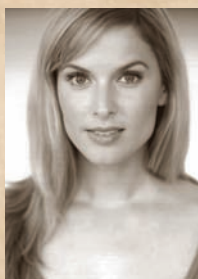
RACHAEL JENISON



JESSE JENSEN



DANIELLE O'FARRELL



**ALLISON SPRATT
PEARCE**



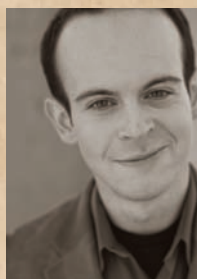
DEBORAH RADLOFF



**STEPHANIE
ROETZEL**



**CHRISTOPHER
SALAZAR**



JONATHAN SPIVEY



**WHITNEY
WAKIMOTO**



**SEAN-MICHAEL
WILKINSON**

MATTHEW BELLOWES (Captain, Priest, Officer) *Sunset Boulevard* (Pioneer Theatre Company), *The Scarlett Pimpernel* (Hale Centre Theatre), *The Cherry Orchard* (The People's Theater), *Big River*, *Les Misérables* and *The Sound of Music* (Tuacahn Center for the Arts). Television and film credits include "Everwood," *Forever Strong* and *The Letter Writer*. He has a B.F.A. in Acting from Brigham Young University.

ADAM DAVELINE (Sir Toby) *The Tempest*, *Much Ado About Nothing*, *Amadeus* and *Jane Austen's Emma – A Musical Romantic Comedy* (The Old Globe), *The Winter's Tale* (Globe/USD MFA). Regional credits include *Finding Nemo – The Musical* (Walt Disney Creative Entertainment), *Les Misérables*, *Company*, *Jesus Christ Superstar*, *Bus Stop*, Tim Rice's *Aida*, *Seven Brides for Seven Brothers*, *Forever Plaid* and *Into the Woods*. Film and commercial work includes *Fire Creek* (Lifesong Productions), *City Search.com* and *Glow After Dark* (Jennifer Lopez Productions). Recordings include the concept albums of *The Legend of Sleepy Hollow* and *Savior of the World*. He has also performed as a featured soloist in Carnegie Hall with the National Alliance for Excellence. Mr. Daveline received his B.F.A. in Musical Theatre from Brigham Young University.

JEREMY FISHER (Sebastian) *Coronado* and *Hollow Lands* (Steep Theatre Company), *Stage Door* and *No More Dead Dogs* (Griffin Theatre Company), the title role in *Ivanov*, *Sweet Confinement* (After Dark Award for Outstanding Ensemble), *The Incredibly Famous Willy Rivers* and *Bible B-Sides* (Sinnerman Ensemble), *Sweet Bird of Youth* (The Artistic Home), *Election Day* (Theatre Seven), *Odin's Horse* (Infamous Commonwealth Theatre), *Hot N' Throbbing* (Pine Box Theater Company) and *Another Day in the Empire* (Black Sheep Productions). Mr. Fisher is a graduate of Indiana University and The School at Steppenwolf.

RACHAEL JENISON (Maria) *The Tempest*, *Much Ado About Nothing* and *Amadeus* (The Old Globe), *The Importance of Being Earnest* and *The Winter's Tale* (Globe/USD MFA). Chicago credits include *Magnolia* (Goodman Theatre), *Wood Demon* (The Library Theatre) and *Hedda Gabler* and *Misanthrope*, or *The Impossible Lovers* (Vintage Theater Collective). Regional credits include *Almond* and *the Seahorse* (Madison Repertory Theatre) and *Twelfth Night* (Great River Shakespeare Festival). Ms. Jenison has a B.F.A. in acting from The University of Minnesota/Guthrie Theater Actor Training Program.

JESSE JENSEN (Feste) *The Tempest*, *Much Ado About Nothing*, *Amadeus* and *Death of a Salesman* (The Old Globe), *The Winter's Tale* and *Dear Harvey* (Globe/USD MFA). Regional credits include *The Heiress* (Long Beach Playhouse), *West Side Story* (Musical Theater Los Angeles), *The Merry Wives of Windsor* (Kingsmen Shakespeare Festival) and the National Tour of *The Art of Being* (Adriana Garza Productions). Los Angeles credits include *Brilliant Traces*, *Sex, Drugs, Rock & Roll* and *Feeding the Moonfish* (Front Porch Players) and the title role in *Hamlet* (Loyola Marymount University). Film and television credits include *Wasted*, *Annabelle*, *Nomad* and *Charley* as well as primetime roles on "CSI: Crime Scene Investigation," "Cane" and "Cold Case." In addition to acting Mr. Jensen has written, produced, and directed for theatre and film. He received a B.A. in Film Production with a minor in Theater Arts from Loyola Marymount University.

DANIELLE O'FARRELL (Fabian) *The Real Thing* (Remy Bumppo Theatre Company), *Orpheus Descending* (American Theater Company), *The Taming of the Shrew* (Chicago Shakespeare Theater) and the world premiere of *Hideous Progeny*, *No Exit* and *The Love of the Nightingale* (LiveWire Chicago Theatre). She has performed in numerous other productions with the side project, First Folio Theatre, Signal Ensemble Theatre, Point of Contention Theatre Company and Bruised Orange Theatre Company. Film credits include *Farewell Darkness* and *Stay with Me*. Her television credits include "My Boys." Ms. O'Farrell received her B.F.A. in Theatre from the Chicago College of Performing Arts at Roosevelt University.

ALLISON SPRATT PEARCE (Viola) *The Tempest*, *Much Ado About Nothing*, *Amadeus* and *Jane Austen's Emma – A Musical Romantic Comedy* (The Old Globe), *The Winter's Tale* (Globe/USD MFA). Broadway and Off Broadway credits include *Cry-Baby*, *Curtains*, *Good Vibrations* and originating the role of Miss B. in *Enter Laughing*. She has appeared in National and European Tours as Sally in *Cabaret* and Sandy in *Grease*. Regional credits include *My Fair Lady* (Capital Repertory Theater), *The Girl in the Frame* (Goodspeed Musicals and Manhattan Theatre Club), *Cinderella* (Arkansas Repertory Theatre), *Oklahoma!* (Casa Mañana), *Barnum*, *Footloose* and *Singin' in the Rain* (Westchester Broadway Theatre). In film and television her roles include *The Smurfs*, *He Got Game*, *NY-70* (NBC pilot) and hosting on HSN. Her commercials include McCormick Spices, Kohl's, Empire City Casino and Lee Riders Jeans. Allison received her B.F.A. in Music Theatre from Elon University. Visit her online at www.allisonsprattpearce.com.

DEBORAH RADLOFF (Olivia) *The Tempest*, *Much Ado About Nothing*, *Amadeus* and *Death of a Salesman* (The Old Globe), *The Winter's Tale* (Globe/USD MFA). Off Broadway credits include *Girls Night: The Musical* (Sophia's Downstairs Cabaret), and her Off Broadway credits include *Dance Dance Revolution* (Les Freres Corbusier). New York credits include *Mosheh: A Video* (HERE Arts Center) and *Powerhouse* (New York International Fringe Festival). She has appeared regionally in *The Yiddish Are Coming: The Chosen Musical* (world premiere, Denver Civic Theatre), *Pericles*, *Othello*, *Richard III*, *The Merry Wives of Windsor*, *Twelfth Night* and *Measure for Measure* (Nebraska Shakespeare Festival) and *A Christmas Carol* (Cincinnati Playhouse in the Park). She received her B.F.A. in Acting from The University of Nebraska–Omaha.

STEPHANIE ROETZEL (Curio, Olivia's Lady) Stephanie has previously performed regionally in *Best Weekend Ever* (Williamston Apprentice Co.), *The Seagull*, *The Beauty Queen of Leeanne*, *Brighton Beach Memoirs* (Vanderbilt University), *My Fair Lady* (The Victory Theatre Center) and *Little Women* (Lake Charles Little Theatre). She received a B.A. from Vanderbilt University.

CHRISTOPHER SALAZAR (Orsino) New York credits include the world premiere of *Thieves* (The Public Theater), *Hamlet* (Gorilla Repertory Theater Company, Inc.), *The Merchant of Venice* (Inwood Shakespeare Festival), *The Tempest* (Brave New World Repertory Theatre) and *Big Love* (Columbia University). Regional credits include *Romeo and Juliet* (Shakespeare Center of Los Angeles), *Saint Joan* (Barter Theatre), *Deathtrap* (The Barnstormers Theatre), *The Winter's Tale*, *Antony and Cleopatra* and *Love's Labour's Lost* (American Shakespeare Center) and the East Coast Premiere of *Outrage* (The Wilma Theater). Mr. Salazar has a B.A. in Dramatic Arts from The University of North Carolina at Chapel Hill.

JONATHAN SPIVEY (Malvolio) *The Tempest*, *Much Ado About Nothing*, *Amadeus* and *Death of a Salesman* (The Old Globe), *The Winter's Tale*, *The Importance of Being Earnest* and *Dear Harvey* (Globe/USD MFA). New York credits include *The Naked Side of Grace* and *The Last Chanukah*. Regional credits: *The Merchant of Venice*, *The Two Gentlemen of Verona*, *Romeo and Juliet* (Richmond Shakespeare), *Cyrano de Bergerac*, *Souvenir*, *Anything Goes* (Barksdale Theatre), *Around the World in 80 Days* (Sierra Repertory Theatre), *Black Gold* (Phoenix Theatre), *Dogpark: The Musical* (Milwaukee Repertory Theatre), *Beauty and the Beast* (Theatre IV), *Gypsy* (Modlin Center for the Arts), *A Midsummer Night's Dream*, *The Complete Works of William Shakespeare* (Abridged), *The Imaginary Invalid*, *Shakespeare in Hollywood*, *Room Service*, *The Foreigner*, *She Loves Me*, *Forever Plaid*, (Hope Summer Repertory Theatre). Mr. Spivey is a Second City-trained improv artist, a jazz pianist, the co-author of the musical comedy *Murphy's Law* and the recipient of the 2011 Craig Noel MFA Fellowship.

WHITNEY WAKIMOTO (Antonia) New York credits include *The Tempest* (Stages on the Sound Theatre). Regional credits include *Endgame* and *Big Love* (Montana Repertory Theatre), *A Midsummer Night's Dream* and *Romeo and Juliet* (The Shakespeare Theatre of New Jersey), *Bug* (Montana Rep Missoula) and *The Good Person of Szechwan* (The Open Space Theatre). She has a B.F.A. in Acting from the University of Montana.

SEAN-MICHAEL WILKINSON (Sir Andrew) New York Credits include *The Party* (Schapiro Theatre), *The Joy of Sex* (American Globe Theatre), *Romeo+Juliette* (Collective Company), *The Lunar Adventure of Dar and Matey* (Stolen Chair Theatre Company) and *The Old Law* (Theresa Lang Theatre). National credits include *Charlotte's Web* (TheatreworksUSA). His regional credits include *Antipholus of Ephesus* (Lake George Theater Lab). He has a B.A. in Theatre Arts from Marymount Manhattan College.

RICHARD SEER (Director) is an award-winning actor and director who has directed and/or performed on Broadway, off-Broadway, on film and television, and in over seventy productions at regional theatres in this country and Great Britain, including: The Goodman Theatre, The Kennedy Center, The Stratford Shakespeare Festival, The Brooklyn Academy of Music, The Huntington Theatre Company in Boston, The Edinburgh Festival in Scotland, to name a few. He originated the role of Young Charlie in the 1978 Tony award-winning production of *Hugh Leonard's Da* (Theatre World Award). At The Old Globe, he has directed productions of *The Life of Riley*, *The Last Romance*, *The Price*, *Romeo & Juliet*, *Who's Afraid of Virginia Woolf?*, *Trying*, *Fiction*, *Blue/Orange* (Critics Circle Award), *All My Sons*, *Da*, and *Old Wicked Songs* (Patte Award). Other recent directing assignments include *Third* for the Huntington Theatre Company and *Sonia Flew* for the San Jose Repertory Theatre. Chair of the Graduate Theatre department, Professor Seer has been head of the Old Globe/University of San Diego Graduate Theatre program since 1993, and was named the Craig Noel Distinguished Professor of Graduate Theatre in 2010.

KEVIN ANTHENILL (Sound Designer) Kevin is a young sound designer with a strong passion for not only designing sound, but also writing music. He has worked with The Old Globe/USD MFA Program as Sound Designer for *The Winter's Tale*, San Diego Asian American Repertory Theater on their dark and edgy production of *BFE*, at the La Jolla Playhouse. Previously, Kevin composed the score for San Diego Repertory Theater's *Boom*, with the score of an action film. He is delighted to be working again with the Globe and USD's MFA program.

RAY CHAMBERS (Text Coach) Since first training with The Old Globe in the mid-eighties, Mr. Chambers has worked as a classical actor and director with numerous regional theatres across the country. For nearly two decades as an Associate Artist with the Alabama Shakespeare Festival, Ray has worked as actor, director, writer, and instructor and served as Director of the Master of Fine Arts/Professional Actor Training Program at ASF since 2001. Regional acting credits include title roles in *Hamlet*, *The Count of Monte Cristo*, *Richard III*, *Coriolanus*, *King John*, *Henry V*, *Tartuffe*; and leading roles in *Julius Caesar*, *The Winter's Tale*, *The Rivals*, *Henry IV*, *Cat On a Hot Tin Roof*, *Great Expectations*, and *Saint Joan* among many others. Credits at the Old Globe include *The Life of Riley*, *Antony and Cleopatra*, *The Comedy of Errors*, *The School for Scandal*, *Coriolanus*, *Love's Labours Lost*, *Hamlet* and *Macbeth*. He has taught Acting and Classical Text in master classes and workshops for universities and theatres around the country and has served as a national board member of the University/Resident Theatre Association.

SEAN FANNING (Set Designer) OLD GLOBE/USD: *The Winter's Tale*, *The Two Gentlemen of Verona*, *A Midsummer Night's Dream*. THE OLD GLOBE: *KINGDOM*, *Plaid Tidings*. San Diego REP: *Walter Cronkite is Dead*. Cygnet Theatre: *Little Shop of Horrors*, *Cabaret*, *The Norman Conquests*, *Sweeney Todd*, *Noises Off*, *A Christmas Carol*, *A Little Night Music*, *Mauritius*, *The Receptionist*, *The Matchmaker*. SAN DIEGO STATE UNIVERSITY: *Zombie Prom* (2008 Patte Award), *The Grapes of Wrath*, *The People v.s. Mona*, *A Man of No Importance*. Sean is the Resident Design Assistant at the Old Globe, where he has worked on over thirty productions. He is also a Resident Artist for the Cygnet Theatre, and holds an MFA in Scene Design from San Diego State University.

JAN GIST (Vocal Coach) Coach at The Old Globe and USD's Graduate Theatre program since 2001. Prior to that, she was the Voice and Speech coach at Alabama Shakespeare Festival for 9 years and 140 productions. Other credits include Oregon Shakespeare Festival, Utah Shakespearean Festival, The Shakespeare Theatre of D.C., La Jolla Playhouse, Mo'olelo Theatre, Arena Stage, Milwaukee Rep., PlayMakers' Rep., Indiana Rep, The Shakespeare Center of America, American Players Theatre. Business and Corporate Clients include: U.P.S., Allegro Resorts, Thomas Jefferson School of Law. Ms. Gist is an originating and published member of the Voice And Speech Trainers Association, and has led many presentations, panels and workshops for them and American Theatre in Higher Education. Publications include exercises in *The Complete Voice and Speech Workout*, and dialect contributions in *More Stage Dialects*, and an interview in *Voice and Speech in the New Millennium*. Jan's list of International workshops include Central School of Speech and Drama in London and a voice teacher's exchange at The Moscow Art Theatre in Russia.

MICHELLE HUNT SOUZA (Costume Design) Globe/USD MFA: *The Winter's Tale*, *The Two Gentlemen of Verona*. Local credits: *Miss Electricity* (La Jolla Playhouse); *Pericles*, *Romeo y Julieta* (Old Globe); *The Tempest* (MiraCosta College) *Rabbit Hole*, *Shipwrecked! An Entertainment*, *The Dresser*, *A Christmas Carol*, *Don't Dress For Dinner*, *String of Pearls*, *Dracula* (North Coast Rep); *Christmas on the Edge*, *Joseph and the Amazing Technicolor Dreamcoat* (Lamb's Players); *Dog Act* (Moxie); *A Bright Room Called Day* (Diversionsary); *Playboy of the Western World* (New Village Arts). UC San Diego Credits: *Good Breeding*, *The Love of the Nightingale*, *The Nightshade Family*, *Measure for Measure*, *11 Hills of San Francisco*, *danceAlive!* Michelle's designs for *Dog Act*, *Bright Room*, and *The Love of the Nightingale* earned Patté Awards for Theatrical Excellence from KPBS. Michelle is a graduate of the MFA program at UCSD.

NICOLE RIES (Stage Manager) Nicole is excited to be making her Old Globe/USD MFA Debut with *Twelfth Night*. She has worked with Cygnet Theatre, San Diego Rep, Wonderous Strange Prod., Crazy Imaginations, and San Diego State University. Nicole holds a BA in Theatre Arts with an emphasis in Arts Management from San Diego State University.

CHRIS RYNNE (Lighting Design) With The Old Globe/USD Professional Actor Training Program: *The Winter's Tale*, *A Midsummer Night's Dream*, *Much Ado About Nothing*, *Twelfth Night*, *All in the Timing*, *The Winter's Tale*, *Two Gentlemen of Verona*, *Macbeth*, *Getting Married*. THE OLD GLOBE: *Life of Riley*, *The Last Romance*, *The Price*, *Sight Unseen*, *Who's Afraid of Virginia Woolf*, *Two Trains Running*, *Pig Farm*, *Lincolnesque* (San Diego Critics Circle Award), *Trying*, *The Lady with All the Answers*, *Vincent in Brixton* (San Diego Critics Circle Award), *The Food Chain*, *Two Sisters and a Piano*, *Blue/Orange*, *Time Flies*, *Knowing Cairo*, *Beyond Therapy*, *The SantaLand Diaries* (2001). ELSEWHERE: San Diego Opera, Michigan Opera Theatre, Madison Opera, Houston Grand Opera, South Coast Rep, Pasadena Playhouse, San Diego Rep, Cygnet Theatre, NCRT, Diversionsary Theatre, Fritz Theatre.

LIZ SHIPMAN (Movement) Co-Founder/Artistic Director for the Kings County Shakespeare Company (KCSC) in NYC from 1983-2001. Liz has directed and/or choreographed productions for KCSC (over 50 productions), New Avenue Theatre Project, Utah Shakespearean Festival, Repertory Theatre of St. Louis, The Old Globe Theatre and lots of little loft-type theatres throughout NYC. She has directed, choreographed and taught movement and acting at the American Academy of Dramatic Arts, Technique for the Whole Actor Studio, T. Schreiber Studio, Manhattan Marymount College, The Atlantic Theatre Company, Webster Conservatory of Theatre Arts, USD's Undergraduate Theatre Arts Department, and The Old Globe/USD Graduate Acting Department where she serves as a member of the core faculty. Favorites projects include *Genet/Hamlet*, *Winter's Tale*, *Rough Crossing*, *Love's Labour's Lost*, *Midsommer Night's Dreame*, *Taming of the Shrew* and *Aphra Behn's The Rover*, *Blood Wedding*, *On The Verge*, *Lysistrata*, *O Jerusalem*, *Fifth of July*, and *The Creation Project*.

PRODUCTION STAFF

Assistant Stage Manager: **Jamie Gillcrist**

Assistant Director: **Lindsay Roth**

Deck Crew: **Dan Klebingat**

Costume Construction: **Susan Sachs**

Master Electrician: **Jim Dodd**

Dresser: **Noelle Van Wyk**

Sound Operator: **Jeremy Siebert**

Globe Rental Assistant: **Marie Jezbera**

Graphic Design: **Llance Bower**

Special Thanks to

The Old Globe Costume, Prop, Scenic Shops, and Lighting Department
for their work in this production.

The Professional Actor Training Program is a joint venture of The Old Globe and the University of San Diego. The program nationally recruits seven students each year to participate in an intensive two-year course of graduate study in classical theatre.

Private funding for the Master of Fine Arts in Dramatic Arts program is contributed through an endowment established by

DONALD AND DARLENE SHILEY

Additional Support for the program is provided by

THE DOROTHY BROWN ENDOWMENT FUND
and the **LOUIS YAGER CANTWELL FOUNDATION**

Special thanks to

BUDDHA FOR YOU

for their loan of statuary for this production.

BUDDHA FOR YOU

6145 El Cajon Blvd. Suite D, San Diego

619-582-1100

www.buddha-for-you.com

For more information on
The Old Globe / University of San Diego
Master of Fine Arts Program visit

www.globemfa.org