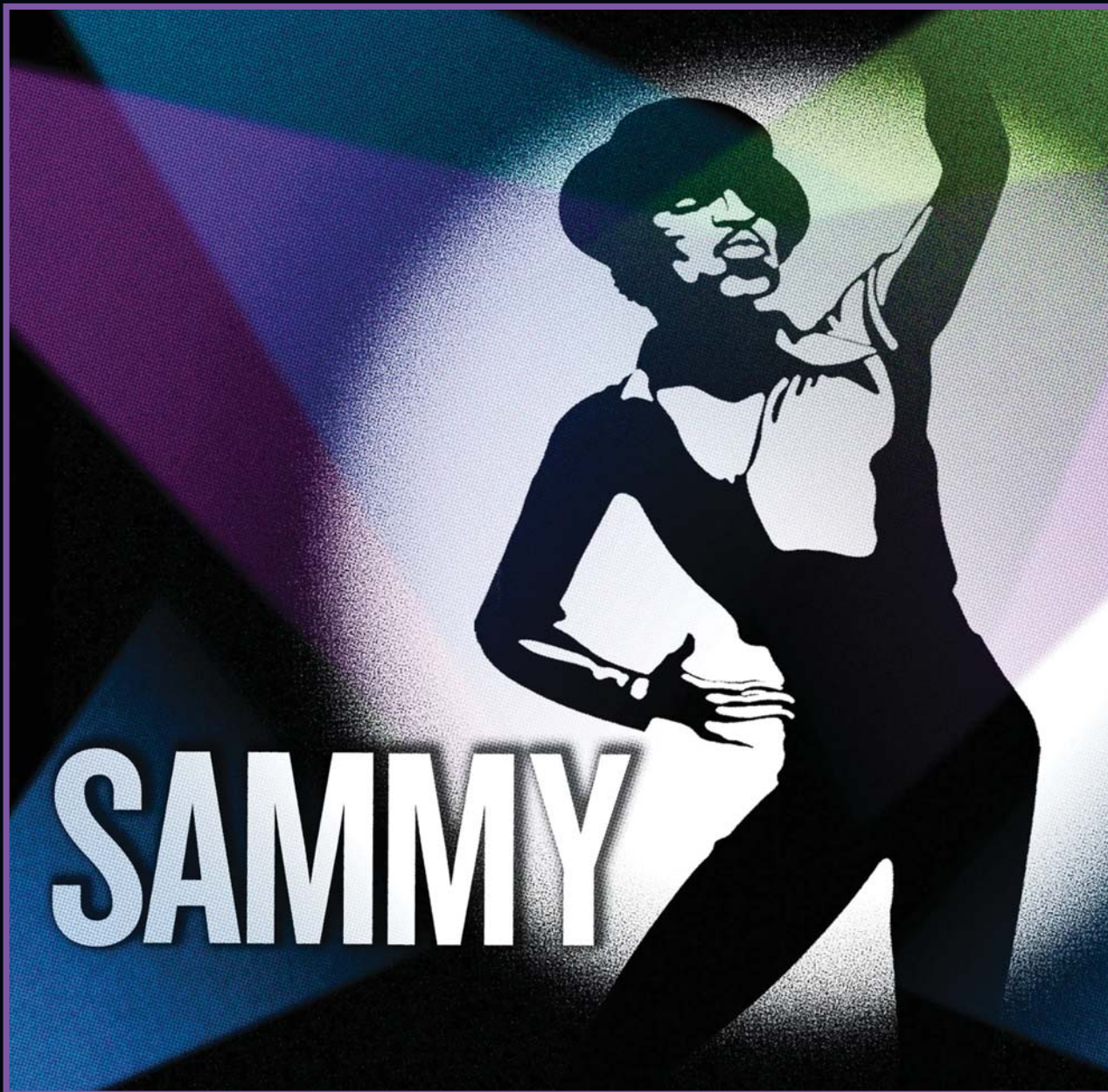


THE OLD GLOBE

# performances

at the **OLD GLOBE THEATRE**

OCTOBER 2009



## UPCOMING

### THE SAVANNAH DISPUTATION

Sept. 26 - Nov. 1, 2009  
The Old Globe Arena Stage  
at the James S. Copley  
Auditorium,  
San Diego Museum of Art



### DR. SEUSS' HOW THE GRINCH STOLE CHRISTMAS!

Nov. 21 - Dec. 27, 2009  
Old Globe Theatre



### WHISPER HOUSE

Jan. 13 - Feb. 21, 2010  
Old Globe Theatre



### LOST IN YONKERS

Jan. 23 - Feb. 28, 2010  
Sheryl and Harvey  
White Theatre



### BOEING-BOEING

March 13 - April 18, 2010  
Old Globe Theatre



Dear Friends,

Leslie Bricusse and I first met about eighteen months ago and we began to look for a project that we could do together at The Old Globe. After discussing several possibilities, he asked me to read his new musical about the life of Sammy Davis, Jr. I thought the work was both entertaining and important. Quite simply, the opportunity to produce this show with its great score and tell the story of this legendary American

entertainer was an opportunity we couldn't pass up.

*Sammy* is a very personal project for Leslie. His friendship with Sammy began in 1961 and was both intensely personal and artistically prolific. In fact, Leslie contributed more songs to Sammy's canon of hits than any other individual songwriter. Many of these great songs, which brilliantly illuminate Sammy and the times in which he lived, are in this new score.

Revealing Sammy is no small feat. There is so much more to Sammy Davis, Jr. than his mythic stage persona. In addition to being one of the greatest performers of his generation he was a very complicated man who struggled with issues of identity, race, relationships, money and fame. His journey wasn't easy but it paved the way for many, many others.

We're fortunate to have Obba Babatundé as our guide on this journey. Obba had a personal relationship with Sammy and this bond between performers of different generations informs Obba's remarkable performance. Sammy was a triple threat performer and so is Obba.

It is a privilege to bring the magic of Sammy Davis, Jr. to those who knew and loved him, and particularly exciting to introduce this "once in a lifetime" performer to an entirely new generation of theatergoers. More than anything, as Sammy's spirit fills the theater tonight, I hope we make him proud.



Louis G. Spisto  
**Executive Producer**



THE OLD GLOBE

P R E S E N T S

# SAMMY

BOOK, MUSIC AND LYRICS

**Leslie Bricusse**

ADDITIONAL SONGS

**Leslie Bricusse and Anthony Newley**

SCENIC DESIGN  
**Alexander Dodge**

COSTUME DESIGN  
**Fabio Toblini**

LIGHTING DESIGN  
**Chris Lee**

SOUND DESIGN  
**John H. Shivers**  
**David Patridge**

ORCHESTRATOR  
**Ned Paul Ginsburg**

MUSIC DIRECTOR/CONDUCTOR/  
DANCE MUSIC ARRANGER  
**Rahn Coleman**

CASTING  
**Tara Rubin Casting**

STAGE MANAGER  
**David Sugarman**

MUSIC SUPERVISOR/VOCAL ARRANGEMENTS

**Ian Fraser**

CHOREOGRAPHER AND MUSICAL STAGING

**Keith Young**

DIRECTED BY

**Keith Glover**

Old Globe Theatre, Donald and Darlene Shiley Stage  
September 19 - November 8, 2009

# Cast of Characters

*(in order of appearance)*

Sammy Davis, Jr. ....OBBA BABATUNDÉ  
Sammy Davis, Sr. ....TED LOUIS LEVY  
Will Mastin .....LANCE ROBERTS  
Rosa Davis.....ANN DUQUESNAY  
Frank Sinatra .....ADAM JAMES  
WACs .....JENELLE ENGLESON, LAUREN HAUGHTON, SARRAH STRIMEL  
Sgt. Jennings/Cohn/Dean Martin .....TROY BRITTON JOHNSON  
Eddie Cantor .....PERRY OJEDA  
Kim Novak.....MARY ANN HERMANSEN  
May Britt .....HEATHER AYERS  
Murphy.....ALONZO SAUNDERS  
Altovise Gore.....VICTORIA PLATT  
Lola Folana .....KEEWA NURULLAH

## THE ENSEMBLE

HEATHER AYERS, JENELLE ENGLESON, STEPHANIE GIRARD, LAUREN HAUGHTON,  
MARY ANN HERMANSEN, TROY BRITTON JOHNSON, KEEWA NURULLAH, PERRY OJEDA,  
VICTORIA PLATT, ANISE RITCHIE, ALONZO SAUNDERS, SARRAH STRIMEL

Stage Manager .....DAVID SUGARMAN  
Assistant Stage Manager .....JESS SLOCUM  
Dance Captain.....SARRAH STRIMEL

The Actors and Stage Managers employed by this production are members of the Actors' Equity Association,  
the Union of Professional Actors and Stage Managers in the United States.

Setting: The world of Sammy Davis, Jr.

There will be one 15-minute intermission.

Si desea una sinopsis de esta obra en Español o en Inglés, favor de pedírsela al acomodador que le entregó este programa.  
If you would like a synopsis of this production in English or Spanish, please request it from an usher.



This theatre operates under an agreement between the League of Resident Theatres and Actors' Equity Association, the union of professional actors and stage managers in the United States.



The Directors are members of the Society of Stage Directors and Choreographers, an independent national labor union.

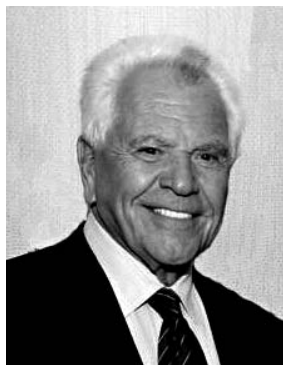


This Theatre operates under an Agreement with the International Alliance of Theatrical Stage Employees Local No. 122.



The Scenic, Costume, Lighting and Sound Designers in LORT Theatres are represented by United Scenic Artists Local USA-826, IATSE.

# Board of Directors



Dear Friends,

I am delighted to welcome you to the launch of the Globe's 2009-2010 season with the world premiere of our newest musical, *Sammy*. This production, and the exciting lineup of plays and musicals that will follow, represent the fulfillment of the Globe's mission to create theatrical experiences of the highest professional standards, and in this tradition, we are proud to unveil another world-class season.

Once more, our ability to continue presenting a wide and varied range of works like those you'll see this season is made possible through your committed patronage – as subscribers and contributors. I'm pleased to learn that many of you have responded positively to the curtain speeches by purchasing new and additional subscriptions, and to the letters and calls asking for your continued support of the Annual Fund this year. I want you to know that your ongoing investment in The Old Globe is appreciated beyond measure.

Once again, from all of us here, thank you for participating so meaningfully, and so often, for the greater good of The Old Globe. Your encouragement and enthusiasm for what we do add to a feeling of great celebration as we kick-off the new season.

Enjoy the show!

Donald Cohn, Chair,  
Board of Directors

## BOARD OF DIRECTORS / OFFICERS

<b>Donald Cohn*</b> <i>Chair</i>	<b>Kathy Hattox*</b> <i>Immediate Past Chair</i>	<b>Anthony S. Thornley*</b> <i>Vice Chair Finance &amp; Treasurer</i>	<b>Sandra Redman*</b> <i>Vice Chair Nominating</i>	<b>Susan Major*</b> <i>Vice Chair Development</i>	<b>Harvey P. White*</b> <i>Secretary</i>
-------------------------------------	---	--	---	--	---

### DIRECTORS

Mary Beth Adderley  
Michael Allman  
Elizabeth Altman  
Joseph Benoit  
Pamela Cesak  
Marsha Chandler  
Peter J. Cooper  
Valerie S. Cooper  
Stephen M. Cusato  
Elaine Bennett Darwin  
Bea Epsten  
Pamela A. Farr  
Harold W. Fuson, Jr.\*  
Victor P. Gálvez  
Robert H. Gleason

Martin Goodman  
Timothy P. Haidinger  
Viviana Ibañez  
Deni Jacobs  
Daphne Jameson  
Mitzi Yates Lizarraga  
Fern Murphy  
Marianne Nelson  
Rafael Pastor\*  
Conrad Prebys\*  
Sara Rosenthal, M.D.  
Jeri Rovsek  
Reneé Schatz  
Jean Shekhter  
Louis G. Spisto\*  
Daniel L. Sullivan, Ph.D.

Julie H. Sullivan, Ph.D.  
Evelyn Mack Truitt  
Debra Turner  
Stacey LeVasseur Vasquez  
Crystal Watkins  
James A. Wening  
Ruth Wikberg-Leonardi  
Brian E. Wineke  
June Yoder  
Carolyn Yorston-Wellcome  
Deborah Young

\*Executive Committee Member

### HONORARY DIRECTORS

Mrs. Richard C. Adams  
(1912-2005)

Clair Burgener (1921-2006)  
Mrs. John H. Fox (1908-2003)  
Audrey Geisel  
Paul Harter  
Gordon Luce (1925-2006)  
Dolly Poet (1921-2007)  
Deborah Szekely  
Hon. Pete Wilson

### EMERITUS DIRECTORS

Garet B. Clark  
J. Dallas Clark (1913-2005)  
Sally Furay, R.S.C.J.  
Bernard Lipinsky (1914-2001)  
Delza Martin (1915-2005)  
Patsy Shumway



Major funding provided by the City of San Diego Commission for Arts and Culture.  
The Old Globe is supported in part by grants from Vice-Chairwoman Pam Slater-Price, Supervisor Bill Horn and  
The County of San Diego Board of Supervisors.

Funded in part by the San Diego Tourism Promotion Corporation with San Diego Tourism Marketing District Funds.

## Leadership Gifts

The Old Globe would like to recognize and thank the following generous individuals who have made extra-ordinary gifts of \$1 million or more to this organization. These major contributions have been designated for artistic projects, endowment and facilities, and help The Old Globe remain one of our country's great theatre institutions.

\$20,000,000 or greater

**Donald and Darlene Shiley**

\$10,000,000 or greater

**Conrad Prebys**

\$5,000,000 or greater

**Sheryl and Harvey White**

**Kathryn Hattox**

**Karen and Donald Cohn**

\$1,000,000 or greater

**California Cultural and  
Historical Endowment**

**Estate of Dorothy S. Prough**

**The Rivkin Family**

**Estate of Beatrice Lynds**

**Audrey S. Geisel/  
San Diego Foundation  
Dr. Seuss Fund**

**Mr. and Mrs. Victor H. Ottenstein**

**Mrs. Helen Edison**

**The Stephen & Mary Birch  
Foundation**

**The Kresge Foundation**

## Season Sponsors

The Old Globe is deeply grateful to its Season Sponsors, each of whom has made an annual donation of \$50,000 or greater. These gifts are critical to maintaining the Globe's high quality of artistic programming and award-winning work in the community.

**The Legler Benbough  
Foundation**

**John A. Berol**

**Mary Ann Blair**

**Karen and Donald Cohn**

**Peter Cooper and  
Norman Blachford**

**Valerie and Harry Cooper**

**The Helen K. and James S.  
Copley Foundation**

**Gigi and Ed Cramer**

**Edgerton Foundation**

**Audrey S. Geisel**

**Globe Guilders**

**Supervisor Bill Horn and the  
County of San Diego**

**Joan and Irwin Jacobs**

**The Lipinsky Family**

**Conrad Prebys and  
Debra Turner**

**Donald and Darlene Shiley**

**Vice-Chairwoman  
Pam Slater-Price and the  
County of San Diego**

**Mickey Stern**

**Sheryl and Harvey White**

**Anonymous**



To become a Season Sponsor, please contact Director of Development  
Todd R. Schultz at (619) 231-1941 x2310.

# Sammy - Production Sponsors

## Mickey Stern

Mickey Stern has been a patron and supporter of the arts for many years, both in San Diego and previously when she lived in Omaha. She strongly believes in the Globe's artistic goals, its stability as a leading non-profit institution and the impact of the Theatre's work in the community. Mickey's admiration of Sammy Davis, Jr. and his remarkable life story, combined with her high regard of the Globe, inspired her to support the creation of an exciting new musical about one of America's finest entertainers. The Old Globe is proud to recognize Mickey Stern as a sponsor of the world premiere musical, *Sammy*.

---



## American Airlines

American Airlines and American Eagle, which serve more than 250 cities in 40 countries, have been long-time supporters of The Old Globe. For more than 20 years, American Airlines has sponsored Globe productions including *The Women*, *A Catered Affair*, *George Gershwin Alone*, *Chita Rivera: The Dancer's Life*, *Lucky Duck*, *Henry V*, *Beyond Therapy* and *The Merry Wives of Windsor*. American Airlines supports the Globe by providing much-needed air travel, bringing the finest actors, directors and designers from around the country to our stages. In addition to their tremendous production support, American Airlines was also a sponsor of the 2009 Globe Gala.

---

## The Edgerton Foundation

The Edgerton Foundation actively supports the development of exceptional theatrical projects that could ultimately join the American repertoire of widely performed plays and musicals. The world premiere production of Leslie Bricusse's *Sammy* was selected to receive an Edgerton Foundation New American Play Award in 2009.

Launched in 2006, the Edgerton Foundation's New American Play Awards have recognized and supported more than 56 productions throughout the United States. The Old Globe – which previously received the prestigious award in support of the world premieres of Mark V. Olsen's *Cornelia*, Itamar Moses' *Back Back Back* and Steven Drukman's *In This Corner* – applauds the Edgerton Foundation's willingness to promote a vital theatre community by supporting the demanding creative processes that yield promising new work.

# Another Perfect Score for the Globe



Charity Navigator, the premier evaluator of non-profits in the United States, has – for the fifth consecutive year – awarded The Old Globe its coveted 4-star rating for sound fiscal management. This places the Globe in the distinguished company of only 4% of all non-profit organizations in the country!

July 1, 2009

Louis G. Spisto  
Old Globe Theatre  
P.O. Box 122171  
San Diego, CA 92112

Dear Louis G. Spisto:

On behalf of Charity Navigator, I wish to congratulate Old Globe Theatre on achieving our coveted 4-star rating for sound fiscal management.

As the nonprofit sector continues to grow at an unprecedented pace, savvy donors are demanding more accountability, transparency and quantifiable results from the charities they choose to support with their hard-earned dollars. In this competitive philanthropic marketplace, Charity Navigator, America's premier charity evaluator, highlights the fine work of efficient charities such as your own, and provides donors with essential information needed to give them greater confidence in the charitable choices they make.

Based on the most recent financial information available, we have calculated a new rating for your organization. We are proud to announce Old Globe Theatre has earned our fifth consecutive 4-star rating for its ability to efficiently manage and grow its finances. Only 4% of the charities we rate have received at least 5 consecutive 4-star evaluations, indicating that Old Globe Theatre consistently executes its mission in a fiscally responsible way, and outperforms most other charities in America. This "exceptional" designation from Charity Navigator differentiates Old Globe Theatre from its peers and demonstrates to the public it is worthy of their trust.

*Forbes*, *Business Week*, and *Kiplinger's Financial Magazine*, among others, have profiled and celebrated our unique method of applying data-driven analysis to the charitable sector. We evaluate ten times more charities than our nearest competitor and currently attract more visitors to our website than all other charity rating groups combined, thus making us the leading charity evaluator in America. Our irrefutable data shows that users of our site gave more than they planned to before viewing our findings, and in fact, it is estimated that last year Charity Navigator influenced over \$10 billion in charitable gifts.

We believe our service will enhance your organization's fundraising and public relations efforts. Our favorable review of Old Globe Theatre's fiscal health will be visible on our website as of July 1st.

We wish you the best in all of your charitable endeavors.

Sincerely,

Ken Berger  
President & Chief Executive Officer

## REMEMBERING SAMMY *By Leslie Bricusse*

I first heard him in November 1955, when I was driving late at night from London to Brighton. He was on the American Forces Radio Network from Germany, singing his revolutionary version of "That Old Black Magic." He was 29 years old and he was dynamite. The disc jockey obviously thought so too, because he played the record incessantly, like it was the only one he had.

I first saw him at The Pigalle in London, where he made his dazzling nightclub debut in the summer of 1960. He practically knocked the old building off its foundation. He took London by storm.

I first met him in 1961, when he came to see *Stop the World – I Want to Get Off*, which Tony Newley and I had just opened at the Queen's

Theatre on Shaftesbury Avenue. The show was a big hit. So was he, performing just down the road at the Prince of Wales Theatre. Within weeks, he became the first American to record the songs from *Stop The World* – four of them – "What Kind of Fool Am I?," "Gonna Build A Mountain," "Once In A Lifetime" and "Someone Nice Like You," which were released by Decca Records on a 7" E.P. (remember *them*?).

He, of course, was Sammy Davis, Jr. – the one, the only,

the nonpareil, the irresistible, the irreplaceable.

He was the first to release the *Stop The World* songs in America, months before the show opened at the Shubert Theater on 44th Street, on October 3rd, 1962. His records played on the radio all through the summer before we opened, contributing enormously to the show's eventual success, and winning gold records for all of us with "What Kind of Fool Am I?," which went on to win the Grammy Award for The Best Song of 1962.

And every performing day of his life until it ended some thirty years later, Sammy sang our songs and our praises with the same love and enthusiasm. There are some debts you can never repay. But then Sammy said the same about our songs.

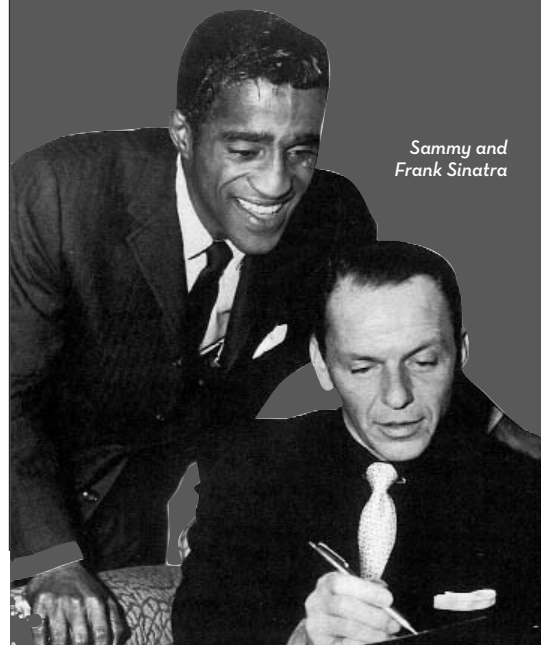
It was a totally natural and perfect mutual admiration society, like a gift from God. We never had any formal plan to work together. The whole thing was born of friendship. Newley and I, and sometimes I alone, wrote songs. Sammy liked them, so he recorded them. We never discussed it. It just happened. It became a matter of course that Sammy got first look at the new songs, mainly because he was always so interested in what we were doing. And, just as Sinatra had Cahn and Van Heusen, and Liza had Kander and Ebb, so Sammy had us. And it would last forever. But, alas, it didn't.

The last-but-one time I saw Sammy perform was at the Red Cross Gala in Monaco in August 1989, when I was instrumental in

getting Sammy and Liza to perform together at the Sporting Club shortly after they had completed their mammoth world tour with Frank Sinatra, modestly billed as *The Ultimate Event*. Just a few weeks earlier, after that amazing trio's triumph at the Royal Albert Hall in London, we had all dined together at a small private dinner party at the Savoy Hotel, overlooking a River Thames glittering with reflected light on a glorious spring evening. No one could possibly have imagined on that happy evening that just one

"It is difficult to compress a friendship of more than 40 years into a few words. . . I wish the world could have known Sam as I did. He never gave less than 100% when he was onstage; and he gave even more to those of us lucky enough to call him a friend. It was a generous God who gave him to us for the years we shared together, and the thought of a Heaven blessed with his magic gives me a great warmth. Sam was the best friend a man could have. . . he was a class act and I will miss him forever."

FRANK SINATRA, MARCH 1992



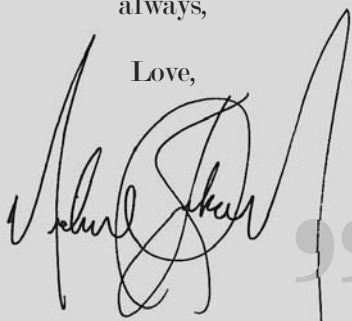
Sammy and Frank Sinatra

# Dear Sammy,

You were there  
Before we came  
You took the hurt  
You took the shame  
They built the walls  
To block your way  
You beat them down  
You won the day  
It wasn't right  
It wasn't fair  
You taught them all  
You made them care  
Yes, you were there  
And thanks to you  
There's now a door  
We all walk through  
And we are here  
For all to see  
To be the best  
That we can be  
Yes, I am here  
'Cause  
You were there

Thank you  
always,

Love,



WRITTEN BY MICHAEL JACKSON



Sammy and Michael Jackson at the Sammy Davis, Jr. 60th Anniversary Celebration, 1990.

short year later we would lose our beloved Sam.

The very last time I saw him perform was at a phenomenal evening our great producer friend George Schlatter had the inspired instinct to put together in November 1989, at the Shrine Auditorium in Los Angeles, just after Sammy had completed what at the time was wrongly perceived to be his successful chemotherapy treatment for throat cancer.

It wasn't by chance that Frank Sinatra, Dean Martin, Bob Hope, Shirley MacLaine, Eddie Murphy, Whitney Houston, Stevie Wonder, Michael Jackson, Bill Cosby, Richard Pryor, Goldie Hawn, Gregory Peck, Clint Eastwood, Quincy Jones, Gregory Hines, Ella Fitzgerald, Dionne Warwick, Diahann Carroll, Magic Johnson and a host of others — the most staggering array of talent I have ever seen — were gathered together in one place that evening to honor one man. All of them, picking up on George Schlatter's instinct, somehow knew they had to be there that night. All of us close to Sammy had to be there. And all of us were. Deep down, though we didn't want to admit it, we all harboured that nagging fear that we were going to lose him.

And the most hard-bitten, sophisticated, "Triple-A" group of Hollywood's "we've-seen-it-all" cognoscenti who were present there on that never-to-be-forgotten night knew as they watched that until that moment they *hadn't* seen it all!... That night they did. That night, before our eyes, Sammy became the full-fledged legend that we always knew he was meant to be.

The given reason for the evening was the celebration of an unbelievable 60 years in show business at the



(l. to r.) Evie, Sammy and Leslie at Evie's 1989 birthday party in Beverly Hills.

age of 63. The *real* reason was that we all suddenly realized what he was in full perspective — more than the performer — the *man*.

He'd done it *all*! Throughout his life he had broken down every barrier, triumphed over every obstacle. He had traveled through and endured and overcome the endless labyrinths of prejudice during his incredible 60-year journey. His limitless talents and his indomitable spirit combined to say more about the world he had lived in than any political spokesman of our time could articulate. For more than half a century he was a front-line soldier, a true eyewitness to the painfully emerging history of the African-American fight for equality and justice.

And it all came together that night. We suddenly saw, with a startling new and deeper clarity, who and what this man was. He was *himself* — the true sum of his own parts. He was Sammy Davis, Jr. And we all feared — perhaps we all *knew*, but didn't want to face it quite yet — that he was going to be taken from us. And that's why we were all there that night. God bless George Schlatter for giving us cause to be there.

## Program Notes *(continued)*

Two moments above all stood out from among a hundred outstanding moments that this remarkable evening provided. One, when Gregory Hines, after trying, as he said, “to dance out” his love for Sammy, got Sam into his tap shoes, which George Schlatter had sneakily purloined from Sam’s house.

The second great moment was the lovely, delicate little song that closed the evening. It was a muted, respectful, thoughtful and loving tribute from one great artist to another, specially composed for the occasion by Michael Jackson and Buz Kohan, and performed by Michael.

The song was short, simple and straightforward. It was called “You Were There.” Its lyric was recognition of what Sammy had achieved and endured – the endless barriers of prejudice that he had overcome to clear the way for the generation of talented young black performers who were to follow him. And the last line of Buz and Michael’s tender and sensitive lyric said it all in the compact, concisely crafted way that only a good lyric can: “I am here, ‘cause you were there!”

And so the Pied Piper has gone. To the last, he carried the name of talent before him like a banner, held high for others to follow – “the greatest entertainer that ever was, or ever will be,” as a very young Michael Jackson once said to me in awe about Sammy in Las Vegas. Sammy was the young Michael’s artistic mentor and inspiration, and Michael duly carried the banner of performing genius into his own generation. “No one like him ever before, or ever again,” said namesake Jesse Jackson at Sammy’s funeral.

And the legend of Sammy will continue to grow. He was as important in his world as Jackie Robinson, Jesse Owens, Martin Luther King and Muhammad Ali in theirs. Like them, he broke down the barriers. Like them, he is an enduring symbol to all people, black and white, of what is possible.

*All photos from the personal collection of Leslie Bricusse.*

*(l. to r.) Tony Newley, Sammy and Leslie hard at work!*



*(l. to r.) Leslie, Evie, Sammy, Alana and George Hamilton at the Los Angeles premiere of Scrooge, November, 1970.*

“

June 7, 1989

Dear Leslie,

Sixty years of show business is a long road to travel, there's been the good times, and the not so good times. No one travels any road alone, and I wanted to thank you for sharing part of this journey with me, and especially for your part in making the recent Daily Variety salute to my sixtieth year in show business one of the good times I shall treasure always.

Peace & Love, Sammy

”

## EDUCATION BY THE NUMBERS

The Old Globe offers Education programming nearly every day of the week in one form or another. Over **50,000** children and adults have been served by our volunteer-based programs.

And how many volunteers work in those programs? Here's how the numbers work out.

Approximately **3,000** children are served by our Globe Readers literacy program each year. Our **29** volunteers participate in training workshops that prepare them for their roles as readers in area schools. They visit their assigned classes on a regular basis to read aloud to the children and to introduce them to the world of theatre through Creative Dramatics and Reader's Theatre activities. Now in its fourth year, the Globe Readers program has benefited over **12,000** children and their teachers by encouraging a love of reading, enhancing language arts classroom instruction, introducing positive role models, and bringing theatre arts to classrooms that do not ordinarily have the resources to incorporate theatre into the curriculum.

It sounds like a tall order for volunteers who may have little or no classroom experience but our volunteers are provided with interactive training sessions, a step-by-step manual and regular staff support to help them do their jobs. These volunteers come from many backgrounds, but the one thing they have in common is a love of reading and a desire to share it with children. They give of their time and in exchange they receive the affection and respect of classroom upon classroom of children inspired to read.

Over **2,000** children and adults take Behind the Scenes tours of our theatre spaces each year. Our **17**



Executive Producer Lou Spisto (center) with the Globe's 2009 Summer Shakespeare Intensive participants, selected from high schools throughout the San Diego area, on the Lowell Davies Festival Theatre stage where they performed Shakespeare's *Pericles*, *Prince of Tyre* on August 17, 2009.

trained docents know this theatre like they know their own homes. They participate in extensive training that provides them the information they need to know in order to pass on the stories and history of this wonderful organization. But we can't give them that inherent ability to tell a good story, to interact with a tour group, to be constantly flexible and imaginative in order to work with a variety of age and interest groups, and to simply love The Old Globe enough to want to share it with others. That comes naturally to them and it's what makes the tours so much fun.

**Tens of thousands** (yes, you read that right) of children and adults participate in Education programs at The Old Globe each year. In addition to the volunteer-based Globe Readers and Behind the Scenes Tours, the Globe offers Seminars and Forums for adults, In-Classroom Residencies, the Summer Shakespeare Intensive for Teens, Professional Development for Teachers and for Teaching Artists, Production Guides, pre-show workshops, Grinch Initiatives and the Globe Honors awards program. Supporting our Education staff are two office volunteers who help us with anything from mailings to program assessment, logistics (try herding **600** first graders into the theatre in ten minutes flat and you'll know why we need our volunteers!), and any number of other departmental needs. Their regular support is yet another reason The Old Globe is able to offer such a wide array of engaging and powerful programs.

We're always looking for new volunteers. If you or someone you know is interested in education, please contact our Education Associate, Kim Montelibano-Heil at [kheil@TheOldGlobe.org](mailto:kheil@TheOldGlobe.org) for more information.



Students get first-hand theatre experience during a globe reader session.

## Heather Ayers (May Britt/Ensemble)



THE OLD GLOBE: *The Women, Ace*. BROADWAY: Megan Mullally's understudy in *Mel Brooks' Young Frankenstein*. OFF BROADWAY: *Five Course Love*; *Sarah, Plain and Tall*; *Forbidden*

*Broadway Strikes Back*; four City Center Encores! productions. REGIONAL: *The Last Five Years* (Cathy), Cincinnati Playhouse; *Guys and Dolls* (Sarah), Dallas Theatre Center; *Cyrano* (Roxane), Barrington Stage; *Songs for a New World*, George Street Playhouse, among others. TV: "Lights Out," "Z Rock." RECORDINGS: *Young Frankenstein*, *Five Course Love*, *Face the Music*. [www.heatherayers.com](http://www.heatherayers.com)

## Obba Babatundé (Sammy)



Like his mentor Sammy Davis, Jr., Mr. Babatundé has been entertaining audiences since he was a child. A skilled actor, singer and dancer, Davis once said of Babatundé that "I feel safe knowing

that with cats like Obba, when I get out of this business I am leaving it in good hands." Babatundé was nominated for a Tony Award for his performance as C.C. White in the original Broadway cast of *Dreamgirls*. His additional Broadway credits include the revival of *Chicago*, *Grind*, and *Timbuktu!* He also created the role of Jelly Roll Morton in *Jelly's Last Jam*. On television, Babatundé delivered an Emmy and CableACE nominated performance in *Miss Evers' Boys*, received a NAACP Image Award nomination for his performance as Harold Nicholas in *Introducing Dorothy Dandridge*, and has appeared in 60 made-for-television movies and countless TV series. Some of his theatrical films include *Philadelphia*, *That Thing You Do*, *After the Sunset*, *The Manchurian Candidate*, *The Notebook* and the upcoming feature *Moneyball* opposite Brad Pitt.

## Ann Duquesnay (Rosa Davis)



Most recently *Sheila's Day*, Market Theatre, Johannesburg, South Africa and Crossroads Theatre, New Brunswick, NJ. BROADWAY: *Bring in 'Da Noise, Bring in 'Da Funk*

(Tony Award, Drama League Recognition Award and Grammy nominee co-composer/lyricist), *Hot Feet*, *It Ain't Nothin But the Blues*, *Jelly's Last Jam*, revival of *The Wiz*, *Blues in the Night*. OFF BROADWAY: *Our Leading Lady* (AUDELCO Award nominee), Manhattan Theatre Club; *Cookin at the Cookery* (Drama Desk nominee and Drama League Recognition Award), Melting Pot Theatre; *Spunk* (AUDELCO Award), New York Shakespeare Festival. REGIONAL: *Hallelujah Baby* (Helen Hayes Award), Arena Stage Washington, DC; *Ma Rainey's Black Bottom*, Denver Center Theatre; *Lady Day* (Bay Area Theatre Critics Circle Award), Theatre on the Square; *Porgy and Bess*, Houston Grand Opera; *Betsey Brown*, McCarter Theatre. NATIONAL TOURS: *The Civil War*, *Bubbling Brown Sugar*, *The Wiz*. Narrator of Aretha Franklin's autobiography audiobook *Aretha from These Roots*; historical voices in Ken Burns TV documentaries.

## Jenelle Engleson (WAC/Ensemble)



NYC THEATER: Radio City Christmas Spectacular. REGIONAL: *Thoroughly Modern Millie*, North Shore Music Theater; *Crazy for You*, Ogunquit Playhouse; *Grease*,

Kansas City Starlight; *42nd Street*, Reagle Players. FILM: *Little Manhattan*. EDUCATION: Currently attending Fordham University for degree in Communication and Public Relations.

## Stephanie Girard (Ensemble)



LA: Premiere of *The Life* (Mary). TOUR: *Grease* (Rizzo). REGIONAL: *The Who's Tommy* (Mrs. Walker), Berkshire Theater Festival & Media Theatre; *Chicago*, Foothills Theatre; *Angels in*

*America*, *Sweet Charity*, *West Side Story*, Connecticut Repertory Theatre. FILM: *Finding Sight*, *Saint Nick*. TV: "As the World Turns," "Nip/Tuck." EDUCATION: Boston Conservatory, University of Connecticut. [www.stephaniegirard.com](http://www.stephaniegirard.com)

## Lauren Haughton (WAC/Ensemble)



BROADWAY: *Wicked*. OFF BROADWAY: *Fools in Love*. REGIONAL: *Turn of the Century* (Dir. Tommy Tune), The Goodman Theatre; *Hans Christian Anderson* (w/Maury Yeston),

Maine State Music Theatre; *Damn Yankees* (Lola), Arizona Broadway Theatre; *Cabaret* (Texas), Stages St. Louis; *La Cage Aux Folles* (Bitelle), Merry-Go-Round Playhouse; *Chicago* (Annie), Forestburgh Playhouse; *Amadeus* (u/s Constanze) and *West Side Story* (Estella), Syracuse Stage. TV: "Guiding Light." EDUCATION: BFA in Musical Theatre from Syracuse University.

## Mary Ann Hermansen (Kim Novak/Ensemble)



BROADWAY: *Carrie*, *Chicago*. TOURS: *Chicago*, *Thoroughly Modern Millie* and *Smokey Joe's Café*. FILM: *Blast from the Past*, *That Thing You Do*, *Forrest Gump* and *Forget Paris*. TV:

"It's Always Sunny in Philadelphia," "CSI: NY," "Step It Up and Dance," "Strong Medicine," "General Hospital" and "Nip/Tuck." EDUCATION: UC Irvine and St. Mary's University.

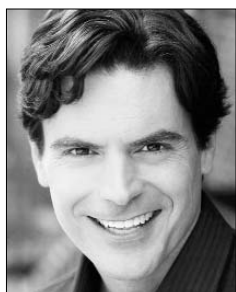
## Adam James (Frank Sinatra)



OFF BROADWAY: *Our Sinatra*. REGIONAL: *The Rat Pack – Live from Las Vegas*, *Forever Swing*, *Eddie!, Sinatra... Remembered*. GUEST ARTIST: Detroit Symphony, Atlanta Pops,

Orchestra London, Kitchener Symphony, Victoria Symphony. FILM: *Mambo Italiano*. AWARDS: Genie nomination (best song), Jazz Report Awards (best vocalist with group). EDUCATION: BMus from McGill University. UPCOMING: Release of debut solo CD, *Adam James*. Performing in Vancouver during 2010 Winter Olympics. [www.adamjames.us](http://www.adamjames.us)

## Troy Britton Johnson (Sgt. Jennings/Cohn/Dean Martin/Ensemble)



BROADWAY: Troy created the role of the tap dancing, blind-folded roller skating groom Robert Martin in *The Drowsy Chaperone*. Also, Joe Hardy in *Damn Yankees* directed by Jack O'Brien,

Elvis in the short-lived sequel *The Best Little Whorehouse Goes Public* and the original company of *The Will Rogers Follies*, both directed by Tommy Tune. He originated the role of Corny Collins in the first national tour of *Hairspray* and played Teddy Slaughter in the national tour of *The Full Monty*, both directed by Jack O'Brien. OFF BROADWAY: Craig Prince in Charles Busch's infamous *Vampire Lesbians of Sodom*. REGIONAL: Steven Kodaly in *She Loves Me* at both the Huntington Theater in Boston and the Williamstown Theatre Festival directed by Nicholas Martin; *The Drowsy Chaperone*, Ahmanson Theater; *A House in the Woods*, Goodspeed Opera House; *A Day in Hollywood*, *A Night in the Ukraine*, Bristol Riverside Theater; *Violet*, Laguna Playhouse; *Cinderella*, Santa Barbara Civic Light Opera; *South Pacific*, Westbury Music Fair as well as productions of *Strike Up the Band* (Timothy Fletcher), and *Bells Are Ringing* (Blake Barton) for Los Angeles' Reprise Theatre Company. FILM: *Blood Night*, *Life in Flight*, and *Calling it Quits*. TV: Disney's "Geppetto," "The Drew Carey Show," "Beverly Hills,

90210" and "As the World Turns." EDUCATION: Troy holds a BA from NYU's Tisch School of the Arts.

## Ted Louis Levy (Sammy Davis, Sr.)



Emmy Award winner Ted Louis Levy's professional training began in Chicago with Finis Henderson II, Master Tap Dancer and former manager of Sammy Davis, Jr. Levy

collaborated with George C. Wolfe and Gregory Hines on the choreography of *Jelly's Last Jam*, for which he received Tony Award and Drama Desk nominations, and the Outer Critics Circle Award. Levy also appeared on Broadway in *Black and Blue* and as Papa Jack in Susan Stroman and Harry Connick, Jr.'s *Thou Shalt Not*. He received a Helen Hayes Award for his portrayal of The Mikado in The Ford's Theatre production of *The Hot Mikado*. Levy made his film debut in Spike Lee's *Malcolm X*, appeared with Gregory Hines in *Bojangles* and received an Emmy Award for his television debut performance in the PBS Special "Precious Memories." He is the recipient of the 2008 Gregory Hines Humanitarian Award. He offers his sincere gratitude to his trainers Shirley Hall Bass and Lois Simon.

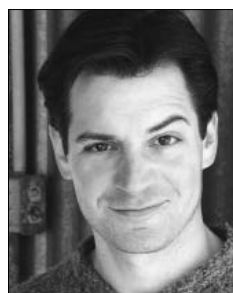
## Keewa Nurullah (Lola Folana/Ensemble)



NATIONAL TOUR: *On the Record* (Disney Theatricals). REGIONAL: *Monty Python's Spamalot*, Las Vegas; *Peter Pan*, The MUNY; *Joseph and the Amazing Technicolor Dreamcoat*, The

MUNY and Kansas City Starlight Theatre. FILM: *Save the Last Dance*. TV: "Victoria's Secret Fashion Show."

## Perry Ojeda (Eddie Cantor/Ensemble)



THE OLD GLOBE: *Imaginary Friends*. BROADWAY: *On The Town*, *Blood Brothers*, *Imaginary Friends*. WEST END: *Dolly West's Kitchen*. TV: "Desperate Housewives," "Eli Stone," "Guiding Light," TNT's *The*

*Day Lincoln Was Shot*, "All My Children," "One Life To Live." EDUCATION: BFA with honors from University of Michigan Musical Theater Program, Graduate - Interlochen Arts Academy. ONLINE: [www.HATheSeries.com](http://www.HATheSeries.com) and [www.PerryOjeda.com](http://www.PerryOjeda.com)

## Victoria Platt (Altovise Gore/Ensemble)



BROADWAY: Original Broadway production of *Jelly's Last Jam* directed by George C. Wolfe. REGIONAL: *Pippin*, Mark Taper Forum; Atlanta, Geffen Playhouse; *Asphalt*, REDCAT; *Smoke*, *Lilies and Jade*, The

Public Theater; *All Night Strut*, Fullerton Civic Light Opera; *Last Days of Judas Iscariot*, Black Dahlia Theatre; *The Hot Mikado*, Ford's Theatre; *Hope Runs Eternal* (NAACP nomination), Nate Holden Performing Arts Center; *Dreamgirls*, Westchester Broadway Theatre; *Women of Plums*, The Kennedy Center; Matt Sax & Eric Rosen's hip-hopical Venice, Kirk Douglas Theatre. EUROPEAN TOUR: *Hair*. FILM: *Jonah Hex* starring Josh Brolin (2010), *My Girlfriend's Back* (2010), *Cover*, *Flip the Script*, *Winchell* (HBO), *True Grits* (Cannes Short Film Corner), *'Round Midnight*. TV: "CSI: Miami," "Crossing Jordan," "Strong Medicine," "Guiding Light," "Barbershop" and "All My Children."

## Anise Ritchie (Ensemble)



THE OLD GLOBE: *Dr. Seuss' How The Grinch Stole Christmas!* (2007, 2008). NATIONAL TOUR: *Ain't Misbehavin'*, *Menopause The Musical*. ELSEWHERE: *Beehive*, *The 60's Musical*,

Sierra Repertory Theatre; *Showboat*, Townsend Opera Players; *Once on this Island*, TheatreWorks; *A Grand Night for Singing*, Smokey Joe's Café, California Conservatory Theatre; *Little Shop of Horrors*, Portland Civic Theatre; Oregon Shakespeare Festival; *The Dance on Widow's Row*, *Blue*, *Eubie* and *Ain't Misbehavin'*, Lorraine Hansberry Theatre, San Francisco. WORKSHOP: San Francisco's *Aftershock*. EUROPEAN TOUR: Emmitt Powell and the Gospel Elites (Lead Singer). EDUCATION/ TRAINING: International Performing Arts Academy, San Francisco; Academy of Arts, San Francisco.

## Lance Roberts (Will Mastin)



Originally from New York, Lance now makes his home in L.A. where he has appeared in almost 100 professional shows including the original L.A. casts of: *Cats*, *I Love You You're Perfect Now Change*, *Forbidden*

*Hollywood*, *The All Night Strut*, *Once on this Island* and most recently *Ain't Misbehavin'* at the Music Center's Ahmanson Theater. San Diego audiences have seen him at San Diego Repertory, La Jolla Playhouse, Moonlight, Welk and Gaslight Theatres. NEW YORK: *Forbidden Hollywood* (original casts), Radio City's *America* and the revival of *The Me Nobody Knows*. TOURS: *Ragtime*, *Dreamgirls*, *Five Guys Named Moe* and many others. REGIONAL: *Antony and Cleopatra*, *Driving Miss Daisy*, *I'm Not Rappaport* and many other original works. TV: "Numb3rs," "Related," "The Drew Carey Show," "Girlfriends" and "Zoey 101," as well as DVD classics such as "Knots Landing," "Dallas," "The Colbys," "My Two Dads" and more. He has been playing Jafar at Disney's California Adventure since the beginning of its 7000 performance run in *Aladdin*, *The Musical Spectacular*.

## Alonzo Saunders (Murphy/Ensemble)



State Music Theatre; *La Cage Aux Folles*, Stages St. Louis; *Oliver!*, Paper Mill Playhouse; *A Chorus Line*, Theater By The Sea. FILM: *My Father's Will*. TV: "30 Rock."

BROADWAY: *Chicago*, *Showboat*  
LONDON WEST  
END: *The Rat Pack*  
– *Live From Las Vegas*. TOURS: *The Rat Pack*, *Chicago*, *The Wizard of Oz*. REGIONAL: *Ragtime*, Maine

## Sarrah Strimel (WAC/Ensemble/Dance Captain)



(Jolene u/s), *The Producers* (1st and 2nd Nat.). REGIONAL: *Minsky's* (Mary u/s), Ahmanson Theatre; *Lil Abner* (Stupifyin' Jones), Goodspeed Opera House; *Cats* (Bombalurina), Houston Theater Under the Stars; *42nd St.* (Anytime Annie), Atlanta Theater of the Stars and Wolf Trap; as well as many shows at Pittsburgh Civic Light Opera, St. Louis' The MUNY and Starlight Theatre (Kansas City).

BROADWAY: *Young Frankenstein* (Inga u/s), *The Producers* (Ulla u/s). Encore Theatre Company's *Stairway to Paradise*. NATIONAL TOURS: *Dirty Rotten Scoundrels*

## Leslie Bricusse (Book, Music and Lyrics)

Double Oscar and Grammy winner Leslie Bricusse is a writer-composer-lyricist who has contributed to many musical films and plays during his career. He was born in London and educated at University College School and Gonville and Caius College, Cambridge. The late, great Beatrice Lillie plucked him out of the *Footlights Revue* at London's Phoenix Theatre and made him her leading man in *An Evening with Beatrice Lillie* at the Globe Theatre, where he spent the first year of his professional life writing the musical, *Boy on the Corner*, and the screenplay and score of his first motion picture, *Charley Moon*, which won his first Ivor Novello Award, Britain's premiere music award. That year he decided to drop the possibilities of directing and performing, and concentrate his career on becoming a full-

time writer-composer-lyricist. His subsequent stage musicals include *Stop the World—I Want to Get Off*, *The Roar of the Greasepaint—The Smell of the Crowd*, *Pickwick*, *Harvey*, *The Good Old Bad Old Days*, *Goodbye, Mr. Chips*, *Henry's Wives*, *Scrooge*, *One Shining Moment*, *Sherlock Holmes*, *Jekyll and Hyde* and *Victor/Victoria*. He has written songs and/or screenplays for such films as *Doctor Dolittle*, *Scrooge*, *Willy Wonka and the Chocolate Factory*, *Goodbye, Mr. Chips*, *Superman*, *Victor/Victoria*, *Santa Claus – The Movie*, *Home Alone I & II*, *Hook*, *Tom & Jerry – The Movie*, and various *Pink Panther* films. Bricusse has written more than 40 musical shows and films, and over the years has had the good fortune to enjoy fruitful collaborations with an array of musical talents, including Anthony Newley, Henry Mancini, John Williams, John Barry, Jerry Goldsmith, Jule Styne, Quincy Jones, Andre Previn, Frank Wildhorn and Peter Illyich Tchaikovsky (whose *Nutcracker Suite* he adapted into a song score). His better-known songs include "What Kind of Fool Am I?," "Once in a Lifetime," "Gonna Build a Mountain," "Who Can I Turn To?," "The Joker," "If I Ruled the World," "My Kind of Girl," "Talk to the Animals," "You and I," "Feeling Good," "When I Look in Your Eyes," "Goldfinger," "Can You Read My Mind?" (the Love Theme from *Superman*), "You Only Live Twice," "Le Jazz Hot!," "On a Wonderful Day Like Today," "Two for the Road," "The Candy Man," "This Is the Moment," "Crazy World," "Pure Imagination" and "Oompa-Loompa-Doompa-Dee-Doo." He has been nominated for ten Academy Awards, nine Grammys and four Tonys, and has won two Oscars, a Grammy and eight Ivor Novello Awards. Hundreds of Bricusse's songs have been recorded by major artists, including Frank Sinatra, Nat King Cole, Judy Garland, Aretha Franklin, Barbra Streisand, Sammy Davis, Jr. (who recorded 60 Bricusse songs), Tony Bennett, Shirley Bassey, Tom Jones, Petula Clark, Julie Andrews, Liza Minnelli, Elaine Paige, Anthony Newley, Michael Feinstein, Bette Midler, the Moody Blues, Nancy Sinatra, Lena Horne, Sergio Mendes, Nina Simone, Dionne Warwick, Ray Charles, Ethel Merman, Placido Domingo, Jennifer Holliday, Danny Kaye, Robbie Williams, Mariah Carey, Linda Eder, Maroon 5, Michael Bublé, and the Black Eyed Peas. In 1989 he received the Kennedy Award for consistent excellence in British songwriting, bestowed by the British Academy of Songwriters, Composers and Authors, and was inducted into the American Songwriters Hall of Fame – only the fourth Englishman to be honored – after Noël Coward, John Lennon and Paul McCartney.

## Anthony Newley (Additional Songs)

Anthony Newley garnered three Tony Award nominations (Best Actor, Best Musical Author and Best Composer and Lyricist) for *Stop the World—I Want to Get Off* and two Tony Award nominations (Best Director and Best Composer and Lyricist) for *The Roar of the Greasepaint—The Smell of the Crowd*, both written with his longtime collaborator, Leslie Bricusse. After the worldwide success of these two hit musicals, Mr. Newley ventured into film with roles in *Doctor Dolittle* and *Sweet November*. Other film credits as director, actor or producer include *Summertime*, *It Seemed Like a Good Idea at the Time*, *Mr. Quilp* and *Can Hieronymus Merkin Ever Forget Mercy Humppe and Find True Happiness?* His collaborations with Mr. Bricusse also produced the score to the television production of *Peter Pan* which starred Danny Kaye and Mia Farrow, the film *Willy Wonka and the Chocolate Factory*, and the London stage production of the *Good Old Bad Old Days*. Together they created such standards as “What Kind of Fool Am I?,” “Who Can I Turn To?,” “Goldfinger,” “Once in a Lifetime” and Sammy Davis, Jr.’s international hit record “The Candy Man.” On television he played opposite Joan Collins in the “Tonight at Eight Thirty” series, “Red Peppers” and “Fumed Oak.” His final television appearances were in “Eastenders” and “The Lakes.” Mr. Newley devoted his time in later years to personal appearances in nightclubs and cabarets around the world performing his highly acclaimed one man show. During the last five years of his life he achieved enormous success in the musical version of *Scrooge* culminating in a record breaking season at London’s Dominion Theatre.

## Keith Glover (Director)

The multitalented Keith Glover returns to The Old Globe having previously directed his own work, *Thunder Knocking on the Door*, winner of the American Theatre Critics Association’s Osborn Award. He authored a new adaptation of the Sammy Davis, Jr. vehicle, *Golden Boy* (based on the original by Clifford Odets and William Gibson) and has directed many of his own plays including *In Walks Ed* which was nominated for the Pulitzer Prize; *Dancing on Moonlight*, produced by the New York Shakespeare Festival; *Coming of the Hurricane*, a finalist for the American Theatre Critics Award for Best Play; *The Rose of Corazon*, *Jazzland*, *Dark Paradise*, *The Clandestine Crossing* and *The Sword of Kazaran*. As an actor, he has appeared on stage, television and film.

Glover received an Outstanding Writing in a Feature Film/Television Movie Image Award nomination for *Life is Not a Fairytale: The Fantasia Barrino Story*.

## Keith Young (Choreographer and Musical Staging)

BROADWAY: *On The Town*. REGIONAL: *Crowns*, Pasadena Playhouse; *Thunder Knocking on the Door*; *Cheer*, Theatre Workshop/Richard Frankel Productions. FILM: Director Nancy Meyer’s upcoming feature *It’s Complicated* with Meryl Streep and Alec Baldwin, *The Baster* with Jennifer Aniston, *Rent*, *Something’s Gotta Give* with Jack Nicholson, *What Women Want* with Mel Gibson, *Dark Streets*, *The Holiday*, *Rat Race*, *The Affair of the Necklace*, *The Parent Trap*. TV: The Academy Awards, The Emmy Awards, The Grammy Awards, The NAACP Image Awards, “Pushing Daisies,” “So You Think You Can Dance,” “The Drew Carey Show” (Emmy Award nominee), “Seinfeld,” “Christopher Reeve: A Celebration of Hope” (American Choreography Award). MUSIC ARTISTS HIGHLIGHTS: Madonna, Baby Face, Bette Midler, Josh Groban, Outkast, Phil Collins, LL Cool J, Talking Heads, Red Hot Chili Peppers, Gladys Knight, Natalie Cole, Brian Boitano, Earth Wind & Fire.

## Alexander Dodge (Scenic Design)

THE OLD GLOBE: *The Pleasure of His Company*, *Bell, Book and Candle*, *The Sisters Rosensweig*, *Moonlight and Magnolias*. BROADWAY: *Old Acquaintance*, Roundabout Theatre Company; *Butley*, *Hedda Gabler* with Kate Burton. OFF BROADWAY: *The Understudy*, Roundabout Theatre Company; *Mom, How Did You Meet the Beatles?*, *Paris Commune*, *Measure for Pleasure*, The Public Theater; *Antony and Cleopatra*, Theatre for a New Audience; *The Water’s Edge*, Second Stage Theatre; *Observe the Sons of Ulster...* (Lortel Award) and *Chaucer in Rome*, Lincoln Center Theater; *Force Continuum* and *Sexual Perversity in Chicago*, Atlantic Theater Company. REGIONAL: Alley Theatre, Arena Stage, CENTERSTAGE, Huntington Theatre, The Gate Theatre (Dublin), Geffen Playhouse, Mark Taper Forum, Papermill Playhouse, The Shakespeare Theatre Company (D.C.), Stratford Festival of Canada, Triad Stage, Williamstown Theatre Festival and Yale Repertory Theatre. OPERA: *Der Waffenschmeid* (Munich); *The Flying Dutchman* (Würzburg); *Lohengrin* (Budapest); *Il Trittico* (Berlin). Mr. Dodge is a graduate of the Yale School of Drama.

## Fabio Toblini (Costume Design)

THE OLD GLOBE: *The Pleasure of His Company*, *The Two Gentlemen of Verona*. OFF BROADWAY: *Hedwig and the Angry Inch*, *Batboy: The Musical*, *Intrigue with Faye*. NATIONAL TOURS: *Godspell*, *Fame*, *Jesus Christ Superstar*. OPERA: *Zar und Zimmermann*, Tiroler Landestheater (Austria); *Macbeth*, Portland Opera; *L’Opera Seria*, *Tales of Hoffmann*, Nationale Reisopera Holland. DANCE: *Romeo and Juliet*, Dominic Walsh Dance Theatre; *The Nutcracker*, Ballet Arizona. REGIONAL: American Players Theatre, Alley Theatre, Guthrie Theater, The Shakespeare Theatre, Ford’s Theatre, Long Wharf Theatre, Children’s Theatre Company in Minneapolis. ELSEWHERE: *Creature from the Black Lagoon*, Universal Studios Hollywood. EDUCATION: Istituto Marangoni, Milano; Parsons School of Design, NYC. AWARDS: 2008 Irene Sharaff Award, 2001 Lucille Lortel nomination for *Batboy: The Musical*. [www.Fabiotoblini.com](http://www.Fabiotoblini.com).

## Chris Lee (Lighting Design)

THE OLD GLOBE: *The Glass Menagerie*. BROADWAY/WEST END: *Fame Becomes Me*, *Linda Eder Live at the Gershwin*, *Shakespeare’s R&J* (Tokyo & London). OFF BROADWAY: *Broadway Bares VI - XIV*, *Floyd And Clea Under The Western Sky*, *Saving Aimee!*, *The Mistress Cycle*, *Under The Bridge*, *Boy*, *The Mysteries Of Harris Burdick*, *The Violet Hour*, ... in the absence of spring..., *Sarah, Plain And Tall*, *Skyscraper*, *Cloud Nine*, *Linda Eder Live at Carnegie Hall*. REGIONAL: *Kiss Of The Spider Woman* (2009 Helen Hayes Award), *The Glass Menagerie*, *M. Butterfly* (Barrymore nomination), *Merrily We Roll Along*, *The Word Begins*, *The Witches Of Eastwick*, *Into the Woods*, *Assassins*, *Urinetown* (Helen Hayes nomination), *Elegies: A Song Cycle* (Barrymore nomination), *The Burnt Part Boys*, *The Last Five Years* (Barrymore nomination), *Follies* (Helen Hayes nomination), *Hedwig and the Angry Inch* (Helen Hayes nomination), *Grand Hotel*, *Sideshow*, *I Am My Own Wife*, *Of Mice and Men*, *My Fair Lady*, *Four Dogs and a Bone*, and *Three Viewings*. ELSEWHERE: *The Pajama Game* (National Tour), *The Backyardigans* (National Tour), *Barbie Live In Fairytopia* (National Tour), *Jesus Christ Superstar* (European Tour), *Twice Charmed* and *Remember the Magic* for Disney Creative Entertainment, *Peep Show* for Planet Hollywood Resort And Casino, and the feature film *Camp*. His studio, Lightworks, conceives and designs lighting

for clients such as Coke, Ford Motor Company, Sony Ericsson, American Express, Bell Canada and Intel.

## John H. Shivers (Sound Design)

Broadway sound design credits include: 9 to 5 (2009 Drama Desk Award nomination for Outstanding Sound Design), *Cat on a Hot Tin Roof*, *The Little Mermaid*, *Tarzan*, *In My Life*, Billy Crystal's *700 Sundays*, Julia Sweeney's *God Said 'Ha.'* He is also credited as the Associate Sound Designer for Broadway and worldwide productions of *Mary Poppins*, *The Lion King*, *The Producers*, *Hairspray*, Elton John and Tim Rice's *Aida*, *Titanic*, *How to Succeed in Business Without Really Trying*, *Big*, *The Who's Tommy*, *Guys and Dolls* and *Buddy – The Buddy Holly Story*. Other credits include work on various productions of *Ace*, Savion Glover, Dionne Warwick and Burt Bacharach and Gregory Hines. Mr. Shivers is married to singer/songwriter Catherine Porter with whom he has a gem of a daughter, Ruby.

## David Patridge (Sound Design)

THE OLD GLOBE: *Ace*. SOUND DESIGNER: *Singin' In The Rain*, Ordway Music Theatre; *Ace*, Repertory Theatre of St. Louis/Cincinnati Playhouse; *Sweeney Todd*, *Miss Saigon*, 5th Avenue Theatre; *Angels in America*, Canadian Stage; *Needfire* as well as numerous concerts and special events, Mirvish Productions. BROADWAY (As Associate Sound Designer): 9 to 5 *The Musical*, *The Little Mermaid*, *Mamma Mia!* (also Toronto, USA Tours, Germany, the Netherlands and Mexico City), *Tarzan* (also Germany and the Netherlands), *Cat on a Hot Tin Roof* and *In My Life*. ELSEWHERE: *We Will Rock You*, Las Vegas and Toronto; *Pajama Game* (also Toronto), London West End; *Béatrice et Bénédict*, Toronto, Canadian Opera Company. BROADWAY (As Mixer): *Tarzan*, *Cat on a Hot Tin Roof* and *Buddy – The Buddy Holly Story*. TORONTO: *Mamma Mia!*, *Rent*, *Beauty and the Beast*, *Crazy For You*, *Pajama Game*, *Jolson*, *Jane Eyre*, *Man of La Mancha* and *Oliver!* TOURS: *Mamma Mia!*, *Guys and Dolls*, *Buddy – The Buddy Holly Story* and *Rent*. Winner of 2007 Kevin Kline award for outstanding sound design for *Ace*.

## Ian Fraser (Music Supervisor/Vocal Arrangements)

Ian Fraser came to New York from England in 1962 with Anthony Newley's and Leslie Bricusse's *Stop the World—I Want to Get Off*, for which he was Musical Director and Arranger of both the original London and Broadway productions. After conducting *Pickwick* on Broadway, he served as Vocal Supervisor for *Doctor Dolittle*, and was John Williams' associate on *Goodbye, Mr. Chips*. For the musical film *Scrooge*, starring Albert Finney, both he and Mr. Bricusse received Academy Award nominations. He and Mr. Bricusse have now worked together for over fifty years. His association with Sammy Davis, Jr. began in 1961, when he wrote Mr. Davis' first arrangement of "What Kind of Fool Am I?" and continued for many years on television specials, and Mr. Davis' revival of *Stop The World*. In 1977, he received his first Emmy Award for the Musical Direction of "America Salutes Richard Rodgers," beginning what was to become the longest run of individual Emmy nominations in the history of the Television Academy. In 2009, he received his thirtieth nomination, and was awarded his eleventh Emmy in 1993 for the 52nd Presidential Inaugural Gala. In December 2009, he will once again be the Musical Director for TNT's 26th "Christmas in Washington," which he has conducted every year since its inception in 1982, and for which he has received three of his Emmy Awards. His 2009 Emmy nomination was his tenth for this show. His film scores include *Hopscotch*, *First Monday in October* and *Zorro the Gay Blade*. He has been Julie Andrews' musical director since 1973, returning to Broadway with her to conduct *Victor/Victoria*. His 1995 and 1997 Broadway albums with Ms. Andrews on Philips Classics were Grammy nominated. He is the past President of the American Society of Music Arrangers and Composers, and recently completed his eighth two-year term as a Governor of the Academy of Television Arts and Sciences. He and his wife Judith, a marriage and family therapist, writer and actress, reside in Los Angeles.

## Ned Paul Ginsburg (Orchestrator)

BROADWAY: *Liza's at the Palace...*, *Beauty and the Beast*, *Gershwin's Fascinating Rhythm*, *Minnelli on Minnelli*. REGIONAL/OFF BROADWAY: *Paper Moon*, *Casper*, *The Apple Tree*, *Inside Out*, *Sharon*. CONCERT/TV/FILM: Bernadette Peters, Diahann Carroll, Elaine Stritch, Kathie Lee Gifford, The Academy Awards, Radio City Music Hall, Faith Prince, Michael Collins (Elliot Goldenthal), Tony Danza, Marilyn Horne, The

King's Singers, The Broadway Kids, Wonder Pets. As a composer, his musical *They Chose Me* written with Michael Colby (on the subject of adoption) has its ninth production this fall, and he, Colby, and filmmaker/bookwriter Susan Seidelman are developing a musical based on Seidelman's 2006 film *Boynnton Beach Club*. AWARDS: National Endowment for the Arts, N.A.R.A.S. Jazz Educators, Downbeat magazine.

## Rahn Coleman (Music Director/Conductor/Dance Music Arranger)

Mr. Coleman's depth, passion and artistry are rarely matched in the areas of musical direction, piano and professional performance coaching. He has served as musical director, conductor and pianist for *Play On*, *Purlie*, *Blues in the Night*, *Lady Day at Emerson's Bar and Grill*, *The Wiz*, *Ain't Misbehavin'*, and the world premiere of *Ray Charles Live!* at the Pasadena Playhouse, winning the professional musical theater award given by the NAACP for best musical direction. A product of extensive classical training having studied at Fisk University and under the renowned teacher Nadia Boulanger, Mr. Coleman has over 30 years of professional experience having performed, conducted coached and arranged for such notables as Aretha Franklin, Freda Payne, Nichelle Nichols, Michael Feinstein, Gladys Knight, Barry White, The Ojays, The Temptations, Tina Turner, Ray Charles, Sarah Vaughn, the Philadelphia Philharmonic and the Clinton Presidential Inaugural Orchestra. Mr. Coleman is the recipient of national and international critical acclaim and always in the running for top honors. Hailed as one of the most effective performance coaches around he is in great demand by directors and producers alike for his work with their lead singers. He also contributes his artistic gifts through service as Minister of Music at Christ the King Lutheran Church in Southern California. As producing director of "The Mystic Knight Recorder," L.A.'s leading underground studio, new vistas for world class music and its performance are in constant creation.

## Tara Rubin Casting (Casting)

THE OLD GLOBE: *The First Wives Club – A New Musical*. BROADWAY/TOURS: *Guys and Dolls*, *Billy Elliot* (Adult Casting), *Shrek*, *The Country Girl*, *Rock 'n' Roll* (US casting), *The Farnsworth Invention*, *Young Frankenstein*, *The Little Mermaid*, *Mary Poppins*, *My Fair Lady*, *The Pirate Queen*, *Les Misérables*, *The History Boys* (US Casting), *Spamalot*, *Jersey Boys*, *The 25th*

Annual Putnam County Spelling Bee, The Producers, Mamma Mia!, The Phantom of the Opera, Good Vibrations, Bombay Dreams, Oklahoma!, Happiness, Flower Drum Song, Imaginary Friends, Metamorphoses, Frogs, Contact, Thou Shalt Not, A Man of No Importance. Yale Repertory Theatre.

## David Sugarman (Stage Manager)

THE OLD GLOBE: *The Times They Are A-Changin'*. BROADWAY: *South Pacific*, (Lincoln Center Theater), *Pygmalion*, *Journey's End*, *The Times They Are A-Changin'*, *Amour*, *The Elephant Man*, *Dance of Death*, *Jane Eyre*, *Marlene*, *Little Me*, *1776*, *Taking Sides*, *Indiscretions*. NATIONAL TOURS: *Hairspray*, *Fosse*, *West Side Story*. REGIONAL: *What is the Cause of Thunder?*, Williamstown Theatre Festival; *Pippin*, Deaf West/Mark Taper Forum. OFF BROADWAY: Playwrights Horizons, Manhattan Theatre Club, Second Stage Theatre, City Center Encores, MCC Theatre and Theatre for a New Audience.

## Jess Slocum (Assistant Stage Manager)

THE OLD GLOBE: *Cornelia*, *Since Africa*, *Dr. Seuss' How the Grinch Stole Christmas!* ('07, '08), *The Glass Menagerie*. BROADWAY: *In the Heights*. REGIONAL: *The Third Story*, *Memphis*, *Most Wanted*, La Jolla Playhouse; *Tranquility Woods*, Steppenwolf Theatre Company; *Romeo and Juliet*, Nashville Opera Association. EDUCATION: BA's in Theatre and Sociology from Vanderbilt University. Member Actors' Equity Association. Love and thanks to Ross.

## UNDERSTUDIES

Sammy Davis, Jr., Will Mastin,  
Sammy Davis, Sr. .... Alonzo Saunders  
Rosa Davis, Lola Folana,  
Altovise Gore ..... Anise Ritchie  
WACs ..... Stephanie Girard  
Frank Sinatra, Dean Martin, Cohn,  
Sgt. Jennings, Murphy ..... Perry Ojeda  
May Britt ..... Mary Ann Hermansen  
Kim Novak ..... Lauren Haughton

### Tara Rubin Casting

Tara Rubin, CSA, Merri Sugarman, CSA,  
Eric Woodall, CSA, Laura Schutzel, CSA,  
Dale Brown, Paige Blansfield, Kaitlin Shaw

## Louis G. Spisto (CEO/Executive Producer)

Lou Spisto directs both the artistic and administrative activities of The Old Globe. During his tenure, Mr. Spisto spearheaded the return of the Shakespeare Repertory Company, revitalized the Globe's new works program, resulting in ten world premiere plays and eight world premiere musicals, and produced more than 100 productions. Under Mr. Spisto's leadership, ticket sales and contributions have increased substantially, and the fiscal health of the organization has been strengthened to support the expanded artistic vision. Mr. Spisto has successfully led the Globe's \$75 million Capital Campaign and managed the development of the Conrad Prebys Theatre Center, which includes a new state-of-the-art arena theatre and education center opening, in December 2009. An advocate of arts education, Mr. Spisto created a number of new programs that serve tens of thousands of young San Diegans each year. These programs include a bilingual summer Shakespeare intensive, a major initiative in Southeastern San Diego which includes the development of new works for younger and more diverse audiences, and free student matinees of the Globe's regular productions. Mr. Spisto holds a Master's degree from the University of Wisconsin and a Bachelor's degree from the University of Notre Dame. He has served as chief executive for the Pacific Symphony, Detroit Symphony and American Ballet Theatre.

## Jack O'Brien (Artistic Director Emeritus)

Mr. O'Brien served as the Artistic Director of The Old Globe from 1982 through 2007. Recent Globe productions: *Dirty Rotten Scoundrels*, *Imaginary Friends*, *Twelfth Night*, *The Full Monty*, *The Seagull*, *The Magic Fire*, *Dr. Seuss' How the Grinch Stole Christmas!* WEST END: *Love Never Dies* (sequel to Andrew Lloyd Webber's *Phantom*, Fall 2009), *Hairspray* (Olivier Award for Best Musical, Best Director nomination). BROADWAY: *Catch Me If You Can*, *Impressionism* (March 2009) Creator/ Supervisor, *Dr. Seuss' How the Grinch Stole Christmas!*, *The Coast of Utopia* (2007 Tony Award for Best Direction of a Play, which won a total of 7 Tony Awards, including Best Play), *Dirty Rotten Scoundrels* (Tony nominations: Best Director and Musical), *Henry IV* (Tony Award), *Hairspray* (Tony Award), *The Invention of Love* (Tony nominations: Best Director and Play), *The Full Monty* (Tony nominations: Best Director and Musical), *More to Love*, *Labor Day*, *St. Louis Woman*, *Pride's Crossing*, *The Little*

*Foxes*, *Hapgood* (Lucille Lortel Award for Direction, 1995), *Damn Yankees* (Tony nomination Best Musical Revival), *Two Shakespearean Actors* (Tony nominations: Best Director and Play), *Porgy and Bess* for Houston Grand Opera and Broadway (Tony Award), as well as Radio City Music Hall, *Il Trittico*, Metropolitan Opera. RECENT AWARDS: 2008 Theatre Hall of Fame Inductee, 2004 Thomas Degaetani Award (USITT), 2002 "Mr. Abbott" Award (SDCF), 2001 Joan Cullman Award for Extraordinary Creativity, 2001 Joe A. Callaway Award (SDCF), the Drama League's Julia Hansen Award for Excellence in Directing, 2001. Honorary Doctorate, University of Michigan. Honorary Doctor of Humane Letters, University of San Diego. Recipient of ArtServe Michigan's 2008 International Achievement Award. Mr. O'Brien is a member of the College of Fellows of the American Theatre.

## FOR THIS PRODUCTION Additional Staff

Asst. Director ..... Charmen Jackson  
Asst. Choreographers  
..... Sharon Ferrol-Young, Dominique Kelley  
Asst. Scenic Design ..... Sean Fanning  
First Asst. Costume Design  
..... Charlotte Devaux  
Second Asst. Costume Design  
..... Shelly Williams  
Asst. Lighting Design ..... Shawna Cadence,  
James Tan  
Voice and Dialect Coach ..... Jan Gist  
Production Asst. .... Marie Natoli  
Rehearsal Pianist ..... Charlie Reuter  
Rehearsal Drummer ..... Jeff Dalrymple  
Projections/Montage Design  
..... Aaron McFarland  
Interns ..... Megan Danielson,  
Catherine Miller, Stephen Ravet

## SPECIAL THANKS

Lonnie Gettman – Designer Fabrics  
Wear It Again Sam

# Annual Fund Donors

The Old Globe's ability to maintain the highest standard of excellence, while keeping ticket prices affordable, is due in large part to the financial support of more than 2,000 individuals, businesses, foundations and government agencies. Please join us in giving a warm thanks and recognition to these leaders who have made tonight and our 625 other performances possible. The Old Globe appreciates the support of those who have stepped into the spotlight.

## Benefactors (\$100,000 and above)

The Legler Benbough Foundation  
Mary Ann Blair  
City of San Diego Commission for  
Arts & Culture  
Audrey S. Geisel/The San Diego  
Foundation Dr. Seuss Fund

Globe Guilders  
Supervisor Bill Horn  
and the County of San Diego  
The James Irvine Foundation  
Donald & Darlene Shiley

The Shubert Foundation  
Vice Chairwoman Pam Slater-Price  
and the County of San Diego  
Sheryl & Harvey White Foundation

## Season Sponsors (\$50,000 to \$99,999)

Bank of America  
John A. Berol  
California Bank & Trust  
J. Dallas & Mary H. Clark Fund at  
The San Diego Foundation  
Karen & Donald Cohn  
Peter Cooper & Norman Blachford  
Advised Fund at the San Diego  
Human Dignity Foundation

Valerie & Harry Cooper  
Gigi & Ed Cramer  
Edgerton Foundation  
HM Electronics, Inc.  
Joan & Irwin Jacobs Fund of the  
Jewish Community Foundation  
The Bernard & Dorris Lipinsky  
Fund of the Jewish Community  
Foundation

Conrad Prebys & Debra Turner  
QUALCOMM, INC.  
Mickey Stern  
Wells Fargo

## Production Sponsors (\$25,000 to \$49,999)

Mary Beth Adderley & Elizabeth Adderley  
American Airlines  
American Express  
Alan Benaroya  
Cohn Restaurant Group/  
Prado Restaurant  
Continental Airlines

Danah H. Fayman  
Kathryn & John Hattox  
Barbara & Neil Kjos  
National Corporate Theatre Fund  
National Endowment for the Arts  
Sempra Energy  
Sheraton San Diego Hotel & Marina

The San Diego Foundation's *Art  
Works for San Diego Initiative*,  
supported by The James Irvine  
Foundation, Ariel W. Coggeshall  
Fund and The San Diego  
Foundation Endowment  
Gillian & Tony Thornley  
Union Bank of California  
U.S. Bank  
Mandell Weiss Charitable Trust

## Directors Circle (\$10,000 to \$24,999)

Anonymous  
Jane Smisor Bastien  
Arthur & Sophie Brody Fund of the  
Jewish Community Foundation  
The Louis Yager Cantwell Private  
Foundation  
Deni & Ken Carpenter  
Pamela & Jerry Cesak  
Elaine & Dave Darwin  
Mr. & Mrs. Brian Devine  
Nina & Robert Doede  
Dr. & Mrs. Robert Epsten  
Carol Spielman-Ewan & Joel Ewan

Pamela A. Farr  
Hal & Pam Fuson  
Robert Gleason & Marc Matys  
Lee & Frank Goldberg  
Martin Goodman  
Ingrid B. Hibben  
Deni & Jeff Jacobs  
Daphne H. & James D. Jameson  
Dr. Ronald & Mrs. Ruth Leonardi  
Sue & John Major  
Dr. Patricia Montalbano  
Allison & Robert Price  
Price Family Charitable Fund

Supervisor Ron Roberts and the  
County of San Diego  
Jean & Gary Shekhter  
Patsy & Forrest Shumway  
Ms. Jeanette Stevens  
Anne Taubman & David Boyle  
Evelyn Mack Truitt  
Brent V. Woods & Laurie C. Mitchell  
June E. Yoder  
Carolyn Yorston-Wellcome  
Robert & Deborah Young

## FOUNDER CIRCLE

(\$5,000 to \$9,999)

Anonymous

Lawrence G. Alldredge & Dawn Moore

Richard & Kathy Binford

The Colwell Family Fund at

The San Diego Foundation

R. Patrick & Sharon Connell

Bernard J. Eggertsen & Florence Nemkov

Martha & George Gafford

Mary Ann & Arnold Ginnow

Leo S. Guthman Fund

Alexa Kirkwood Hirsch

Leonard & Elaine Hirsch

Melissa & James Hoffmann

Carol & George Lattimer

Peter & Inge Manes

Paul I. & Margaret W. Meyer

Money/Arenz Foundation, Inc.

Harle Garth Montgomery

Arthur & Marilyn Neumann

Charles & Barbara Noell

The Kenneth T. & Eileen L. Norris

Foundation

John & Marcia Price Family Foundation

Ellen C. Revelle\*

Jeannie & Arthur Rivkin

Deborah Szekely

The Thursday Club Foundation

Dixie & Ken Unruh

## CRAIG NOEL CIRCLE

*As of July 2008, the Craig Noel Circle includes gifts of \$2,500 - \$4,999. This change is being phased in over the current year as patrons renew their gifts. For donors who contribute to the Paver Campaign, the phase-in period is up to five years.*

(\$2,500 to \$4,999)

Richard Adesso

Dr. & Mrs. Wayne Akeson

Gail, John & Jennifer Andrade

Dr. Bob & Jill Andres

Anonymous (3)

Mr. & Mrs. Richard Baldwin

Melissa Garfield Bartell & Michael Bartell

Joan & Jeremy Berg

Charles & Charlotte Bird

Paul Black

Dr. Herman & Irene Boschken

Dr. & Mrs. Edgar D. Canada

George & Ellen Casey

Carol & Rudy Cesena

Carol & Jeff Chang

Garet & Wendy Clark

Ms. Heidi Conlan/

The Sahana Daywi Foundation

Susan B. Cowell

Ann & John Davies

Darlene G. Davies in memory

of Lowell Davies

Pat & Dan Derbes

Mrs. Philip H. Dickinson

Jim & Sally Ditto

Marion Eggertsen

Peter & Doris Ellsworth

Mr. & Mrs. Ira S. Epstein

Alan & Pauline Fatayerji

Carol Fink

Mary & David Fitz

Susanna & Michael Flaster

Samuel I. & John Henry Fox Foundation

at Union Bank of California

Millicent & Charles Froehlich

Deede Gales

Barbara & Albert Garlinghouse

Bill & Judy Garrett

Drs. Thomas H. & Jane D. Gawronski

Sheila & Tom Gorey

Ms. Cheryl Haimsohn

Norm Hapke & Valerie Jacobs Hapke

Drs. Patrick Harrison & Eleanor Lynch

Susan & Dr. Ronald Heller

Dr. & Mrs. Peter K. Hellwig

Rhonda Heth & Thomas Mabie

Dr. & Mrs. Harry F. Hixson, Jr.

Tish & Jere Horsley

Dr. David K. Hostetler

Richard & Janet Hunter

Hutcheson Family Fund at

The San Diego Foundation

Al Isenberg & Regina Kurtz

Drs. Sonia & Andy Israel

Al\* & Pat JaCoby

Mary & Russell Johnson

Dr. & Mrs. Richard L. Kahler

William Karatz

Marge & Jerry Katleman

Maurice Kawashima

Bob\* & Gladys King

Ken & Sheryl King

Jane & Ray Klofkorn

Curt & Nancy Koch

Brooke & Dan Koehler

Rosalie Kostanzer & Mike Keefe

Bob & Laura Kyle

Dr. Eric Lasley & Judith Bachner

Ledford Enterprises Inc.

Terry & Mary Lehr

Ms. Sherrill Leist

James & Pamela Lester

Jerry Lester, M.D./Rosarito, Mexico

Sandy & Arthur Levinson

Mathew & Barbara Loonin

Merriel F. Mandell, Ph.D.

Charlie & Jackie Mann

R.J. Maus, Architects

Elizabeth & Edward McIntyre

Harold O. McNeil

Rebecca Moores

Mr. & Mrs. David Mulliken

Joyce & Martin Nash

National Alliance for Musical Theatre

Josiah & Rita Neeper

Eileen & Lawrence Newmark

Tom & Lisa Pierce

Matthew & Judith Pollack

Mo & Bill Popp

Dr. & Mrs. Daniel Porte

Brian & Paula Powers

Joanne Powers

The Pratt Memorial Fund at Union Bank  
of California

Joseph & Jane Rascoff

Sarah B. Marsh-Rebello & John G. Rebello

Mrs. Charlotte Rees

Roger & Christine Roberts

Nancy J. Robertson

Warren & Beverly Sanborn

Sherry & Charles Sheppard

Drs. Joseph & Gloria Shurman

Nancy & Alan Spector and Family

Nancy Steinhart & Rebecca Goodpasture

Hannah & Eugene Step

Julie & Bob Sullivan

Cherie Halladay Tirschwell

Ric Torres

Carol Vassiliadis

Doris & Lou Vettese

Jordine Von Wantoch

Merle Wahl

Jan Harden Webster & Raul Ortega

Chris & Pat Weil

Helene & Allan Ziman

(\$1,500 to \$2,499)

Anonymous

Anita Busquets & William Ladd

Lisa & David Casey

Ron & Devora Eisenberg - Great News!

Joy & Dr. Fred Frye

Elaine & Murray Galinson

Gary & Carrie Huckell

Jackie Johnston-Schoell

William & Edythe Kenton

Jo Ann Kilty

Sherry & Larry Kline

Christopher & Cheryl Lee

Robin J. Lipman & Miro Stano

Elizabeth Meyer

Akiko Charlene Morimoto &

Hubert Frank Hamilton, Jr.

Nancy & James Mullen

Dolly\* & Jim Poet

Marie & Don Prisby

Sanderson Family Donor Advised Fund

at the Rancho Santa Fe Foundation

Marisa SorBello & Peter Czipott

Pat & Jack Thomas

Pamela J. Wagner

Z.J. Waxenberg Fund of the

Jewish Community Foundation

James & Ellen Weil

Shirli Fabbri Weiss

Dr. Steve & Lynne Wheeler

# Annual Fund Donors *(continued)*

## DIAMOND

(\$1,500 to \$2,499)

Mrs. Lazare F. Bernhard  
Ronda & Stanley Breitbard  
BRG Consulting  
Dr. & Mrs. Robert M. Callicott  
Jack & Carol Clark  
Richard & Stephanie Coutts  
Sid & Jean Fox  
Martin & Enid Gleich  
Sherry & Rick Levin  
Joy & Ronald Mankoff  
Ruth & Jim Mulvaney  
Parker & Crosland, LLP  
Susan Parker  
Peggy Price  
Dee E. Silver, M.D.  
Susan Steele & Mike Conley  
Christy & Howard Zatkin

## PLATINUM

(\$1,000 to \$1,499)

Judy & Larry Belinsky  
Nicholas B. Binkley  
Sandra & Harry Carter  
Roger Cornell, M.D.  
Patricia Eichelberger  
In Memory of John A. Geisel  
Richard & Candace Haden  
Webster & Helen Kinnaird  
Dr. & Mrs. Ara Klijian  
Dr. & Mrs. James E. Lasry  
Don & Mary Jane Lincoln  
Dr. Robert & Marcia Malkus  
Jasna Markovac & Gary Miller  
Dr. & Mrs. M. Joseph McGreevy  
Judith & Neil Morgan  
Jack & Virginia Oliver  
Rod & Barbara Orth  
Dr. Julie Prazich & Dr. Sara Rosenthal  
Alan & Esther Siman  
Herbert & Elene Solomon  
Margery & John Swanson  
Linda Terramagra  
Gene & Celeste Trepte  
Stan & Anita Ulrich  
M.J. Zahnle

## GOLD

(\$500 to \$999)

Dr. & Mrs. Maurice Alfaro  
Janet Anderson & John Glascock  
Anonymous (2)  
Drs. Michael & Gabriela Antos  
Jeff & Donna Applestein  
John & Carolyn Backman  
Mr. & Mrs. David A. Baer  
Richard & Linda Basinger  
Madelyn Bennett  
Bob & Joyce Blumberg  
Mr. & Mrs. Blaine A. Briggs  
Dr. & Mrs. Simon C. Brumbaugh, Jr.  
Ruth Mary Campbell

Beth & Tim Cann  
Greg & Loretta Cass  
Luc & Ann Marie Cayet-Pleska  
Ray & Shelley Chalupsky  
Lynne Champagne & Wilfred Kearse  
Roseann Concannon & Bill Waggoner  
Betsy Dam  
Dr. Donald & Eilene Dose  
Dorothy R. Dring  
William Eiffert & Leslie Hodge  
Paul & Clare Friedman  
Dr. & Mrs. Steven Garfin  
Peter & Christine Gault  
Craig & Terrie Georgi  
Arthur & Judy Getis  
Norman & Patricia Gillespie  
Chris Graham & Michael Albo  
Carol & Don Green  
Mr. & Mrs. Arthur A. Greenberg  
Mr. & Mrs. Norman Greene  
Jay & Mary Hanson  
Alex & Mary Hart  
Mr. & Mrs. Arnold Hess  
Mr. Stephen Hopkins & Dr. Carey Pratt  
Viviana Ibanez  
Isabella Fund at The San Diego  
Foundation  
Kathy & Rob Jones  
Kenneth & Marilyn Jones  
David & Susan Kabakoff Family Fund  
of the Jewish Community Foundation  
Patricia & Alexander Kelley  
Gerald & Phyllis Kelly  
Bill & Linda Kolb  
Marvin M. Kripps, M.D.  
LABS, Inc./Silvia Dreyfuss  
Sherry & Rick Levin  
CDR. Mark C Lorenzo, USN Ret.  
Dr. & Mrs. David D. Lynn  
Edward & Nancy Lyon  
Carl Maguire & Margaret Sheehan  
Jeanne Maltese  
Drs. Betty Joan Maly & John Meyers  
Ron & Mercy Mandelbaum  
F. Dale & Lois Marriott  
Martin & Passante AAL  
JoAnne D. Marugg  
Rev. Stephen J. Mather  
Christopher J. Maxin &  
Stephanie Buttell-Maxin  
Ronald McCaskill & Robyn Rogers  
Mr. & Mrs. William McKenzie  
James & Estelle Milch Fund of the  
Jewish Community Foundation  
Carole S. Miller  
Charles W. Mills, Jr.  
Steve & Jill Morris  
Susan & Charles Muha  
Mark Niblack  
Barbara B. Oswalt  
Julius J. Pearl Fund at  
The San Diego Foundation  
Leslie & Judy Reed

Elaine Rendon\* & Alicia Atun  
Joseph W. & Kathleen A. Robinson  
Linda J. Seifert  
Mr. & Mrs. Randall Silvia  
Rodney & Dolores Smith Fund at  
The San Diego Foundation  
Gloria Penner Snyder & Bill Snyder  
Mr. & Mrs. George Stassinopoulos  
Edward Stickgold & Steven Cande  
Sharon S. Storey & Theodore A. Milby  
Helga & Sam Strong  
John & Linda Sunkel  
Clifford & Kay Sweet  
Dr. Terry & Naomi Tanaka  
Randy Tidmore  
Gertrude Trebon  
Jeffrey & Sheila Truesdell  
Natalie C. Venezia & Paul A. Sager  
Johanna Vertullo  
Douglas Wallingford  
Howard & Jo Weiner  
Mr. & Mrs. David Weinrieb  
Katherine White  
Ross & Barbara White  
Dennis & Carol Wilson  
Cass Witkowski Family  
Bill & Betty Witman  
Brendan M. & Kaye I. Wynne  
RAdm. & Mrs. Guy Zeller

*This list is current as of August 11, 2009*

**As announced in July 2008, the names of Annual Fund donors at the Silver level are published semi-annually, once in the Shakespeare Festival program and again in a winter Globe program.**

To learn more about supporting The Old Globe's artistic, education and community programs, please visit our website at [www.TheOldGlobe.org](http://www.TheOldGlobe.org) or call Josh Martinez-Nelson at (619) 231-1941 x2308.

\*In Memoriam

# Globe Ambassadors

*Globe Ambassadors are generous supporters of The Old Globe who contribute \$2,500 or more to the Annual Fund, attend special presentations about activities at the Globe and serve as the Theatre's Ambassadors in the community.*

Lawrence G. Alldredge and  
Dawn Moore  
Paul Black  
Dr. and Mrs. Edgar D. Canada  
Carol and Rudy Cesena  
Mary H. Clark  
Steven J. Cologne  
R. Patrick and Sharon Connell  
Susan B. Cowell  
Gigi and Ed Cramer  
Darlene G. Davies  
Mrs. Philip H. Dickinson

Nina and Robert Doede  
Marion Eggertsen  
Bernard J. Eggertsen and  
Florence Nemkov  
Danah H. Fayman  
Susanna and Michael Flaster  
Mary Ann and Arnold Ginnow  
Alexa Kirkwood Hirsch  
Leonard and Elaine Hirsch  
Pat Jacoby  
Mary and Russell Johnson  
Bob\* and Gladys King  
Rosalie Kostanzer and Mike Keefe  
Bob and Laura Kyle  
James & Pamela Lester  
Dr. Jerry Lester  
Merriel F. Mandell, Ph.D.  
Peter and Inge Manes  
Paul I. and Margaret W. Meyer  
David and Noreen Mulliken

Charles Noell and Barbara Voss  
Joanne C. Powers  
Jeannie and Arthur Rivkin  
Donald and Darlene Shiley  
Ms. Jeanette Stevens  
Dixie and Ken Unruh  
Doris and Lou Vettese  
Pamela J. Wagner  
Jordine Von Wantoch  
\*In Memoriam

For more information please  
contact Marilyn McAvoy,  
Major Gifts Director  
at (619) 231-1941 x2309  
mmcavoy@TheOldGlobe.org.

# Craig Noel League Members Planned Giving Society of The Old Globe

*Craig Noel League members are leaving lasting gifts to the Theatre through planned gifts, cash contributions, bequests and other estate planning options.*

Anonymous (14)  
Robert S. Albritton\*  
Diana Barliant  
Nancine Belfiore  
Alan Benaroya  
Dorothy Brown Endowment Fund  
Dr. and Mrs. Edgar D. Canada  
Garet and Wendy Clark  
J. Dallas\* and Mary H. Clark  
R. Patrick and Sharon Connell  
Patricia W. Crigler, Ph.D., CAPT/USN/Ret.  
Carlos and Patricia Cuellar  
Patricia\* and Donn DeMarce  
Mrs. Philip H. Dickinson  
Dr. and Mrs. Robert Epsten  
Frank A. Frye, III  
Robert Gleason and Marc Matys  
Marcy Goldstone

Kathryn Crippen Hattox  
David and Debbie Hawkins  
Craig and Mary Hunter  
Barbara Iredale\*  
Bob Jacobs  
Joseph E. Jessop\*  
J. Robert\* and Gladys H. King  
Marilyn Kneeland  
Jean and David Laing  
Jerry Lester Foundation  
Dr. Bernard Lipinsky\*  
Heather Manion  
Calvin Manning\*  
Chris and Jill Metcalf  
Paul I. and Margaret W. Meyer  
Judy\* and George Miller  
Steve Miller  
Dr. Robert W. Miner  
Shirley Mulcahy  
Laurie Dale Munday  
Stanley Nadel and Cecilia Carrick  
Alice B. Nesnow  
Arthur and Marilyn Neumann  
Craig Noel

Greg and Polly Noel  
PACEM (Pacific Academy of  
Ecclesiastical Music)  
Mrs. Margaret F. Peninger\*  
Velda Pirtle\*  
Florence Borgeson Plunkert\*  
Dolly\* and Jim Poet  
Dorothy Shorb Prough\*  
Sarah B. Marsh-Rebello and  
John Rebello  
Donald and Darlene Shiley  
Patsy and Forrest Shumway  
B. Sy and Ruth Ann Silver  
Stephen M. Silverman  
Roberta Simpson  
Dolores and Rod Smith  
Marisa SorBello and Peter Czipott  
John and Cindy Sorensen  
Marje Spear\*  
Nancy A. Spector and Alan R. Spector  
Jeanette Stevens  
Eric Leighton Swenson  
Anne C. Taubman  
Cherie Halladay Tirschwell

Marian Trevor (Mrs. Walter M.)\*  
Evelyn Mack Truitt  
Ginny Unanue  
Carol and Lawrence Veit  
Harvey\* and Jordine Von Wantoch  
Merle and Phil\* Wahl  
Holly J.B. Ward  
Sheryl and Harvey P. White  
Mrs. Jack Galen Whitney  
Stanley E. Willis II\*  
Julie Meier Wright  
Carolyn Yorston-Wellcome  
\*In Memoriam

For more information please  
contact Marilyn McAvoy,  
Major Gifts Director  
at (619) 231-1941 x2309  
mmcavoy@TheOldGlobe.org.

# Special Thanks to our Corporate Donors

Corporate Partners enjoy benefits and recognition, especially the opportunity to entertain clients and employees with exclusive receptions at the theatre, behind-the-scenes tours, and preferred seating at our shows.

## SEASON SPONSORS (\$50,000 and more)



---

## PRODUCTION SPONSORS (\$25,000-\$49,999)



---

## DIRECTOR CIRCLE (\$10,000-\$24,999)

City National Bank  
Cyberknife Centers of San Diego, Inc./  
Radiation Medical Group  
Higgs, Fletcher & Mack, LLP

KPMG, LLP  
Neiman Marcus  
ResMed Foundation  
Starbucks Coffee Company

Torrey Pines Bank  
Vistage International

---

## FOUNDER CIRCLE (\$5,000-\$9,999)

AT&T  
M2000 Corporation  
San Diego Business Journal

## CRAIG NOEL CIRCLE (\$2,500-\$4,999)

Break-Away Tours  
Cushman Family Foundation  
Designer Fabrics  
Nordstrom  
Target  
WD-40 Company  
The Westgate Hotel

For information, please contact Todd Schultz at (619) 231-1941 x2310.

# Associate Artists of The Old Globe

In recognition of their unique contribution to the growth of The Old Globe and their special talent, we take great pride and pleasure in acknowledging as ASSOCIATE ARTISTS OF THE OLD GLOBE, the following who have repeatedly demonstrated by their active presence on our stages and in our shops, that wherever else they may work, they remain the heart and soul of this theatre.

William Anton  
Jacqueline Brooks  
Lewis Brown  
Victor Buono\*  
Wayland Capwell\*  
Kandis Chappell  
Eric Christmas\*  
George Deloy  
Tim Donoghue

Richard Easton  
Tovah Feldshuh  
Monique Fowler  
Robert Foxworth  
Ralph Funicello  
Lillian Garrett-Groag  
Harry Groener  
A.R. Gurney  
Joseph Hardy

Mark Harelik  
Bob James  
Charles Janasz  
Peggy Kellner\*  
Tom Lacy  
Diana Maddox  
Dakin Matthews  
Deborah May  
Katherine McGrath

John McLain  
Jonathan McMurtry  
Stephen Metcalfe  
Robert Morgan  
Ellis Rabb\*  
Steve Rankin  
Robin Pearson Rose  
Marion Ross  
Steven Rubin

Ken Ruta  
Douglas W. Schmidt  
Seret Scott  
David F. Segal  
Richard Seger  
Diane Sinor  
Don Sparks  
David Ogden Stiers  
Conrad Susa

Deborah Taylor  
Irene Tedrow\*  
Sada Thompson  
Paxton Whitehead  
James Winker  
Robert Wojewodski  
G Wood\*  
\* in memoriam

## Patron Information

### TICKET SERVICES HOURS

Monday: Closed

Tuesday - Sunday: Noon - last curtain

Hours subject to change. Please call ahead.

**Phone** (619) 23-GLOBE or (619) 234-5623

**FAX** (619) 231-6752

**Email** Tickets@TheOldGlobe.org

### ADMINISTRATION HOURS Monday - Friday: 9am - 5pm

**Phone** (619) 231-1941

**Website** www.TheOldGlobe.org

**Address** The Old Globe

P.O. Box 122171

San Diego, CA 92112-2171

### ORDERING TICKETS/CHANGE OF ADDRESS

The Old Globe accepts Visa, Discover, MasterCard, or American Express. Phone orders for non-subscribers are subject to a \$3.50 per ticket service charge. Ticket exchanges are subject to a service charge for non-subscribers. If you have moved, please notify the Ticket Services Office to update our records. Call (619) 234-5623 during Ticket Services hours, mail your change of address to the Ticket Services Office, or email us at Tickets@TheOldGlobe.org.

### UNABLE TO ATTEND?

If you find you are unable to use your tickets, please give them to a friend, or turn them in to the Ticket Services Office and receive a tax receipt for your donation. Tickets must be received by show time.

### RESTROOMS AND TELEPHONES

Restrooms are located in the lower lobby of the Old Globe Theatre and adjacent to the Festival Theatre; pay phones may be found in the lower Globe Theatre lobby and next to the Gift Shop.

### SEATING OF LATECOMERS

Although we understand parking is often at a premium, the seating of latecomers is extremely disruptive. Latecomers

may be given alternative seating and will be seated at an appropriate interval.

### YOUNG CHILDREN

Children five years of age and under will not be admitted to performances.

### ELECTRONIC DEVICES AND CAMERAS

Use of recording devices and cameras is not permitted. If you are wearing a digital watch or pager, or if you are carrying a cellular phone, please silence it prior to entering the theatre.

### ASSISTED LISTENING SYSTEM

For the convenience of the hearing impaired, the assisted listening system is available in the Old Globe Theatre. Lightweight headsets may be obtained from the house manager prior to performances, free of charge.

### PUBLIC TOURS

Go behind the scenes at The Old Globe to learn about the history, three stages, shop and craft areas. Open tours: most Saturdays and Sundays at 10:30am. Groups by reservation. \$5 adults; \$3 seniors and students. Phone (619) 231-1941 x2142 for information/reservations.

### LOST AND FOUND

If you have misplaced a personal item while at the theatre, please contact the Ticket Services Office or Security as soon as possible. If we are unable to locate your item, we'll happily take down your contact information as well as a description of the item and contact you if it is found. The Old Globe does not assume liability for items left behind on premises.

**Natural Herb Cough Drops - Courtesy of Ricola USA, Inc., are available upon request. Please ask an usher.**

# Staff

Louis G. Spisto ..... **CEO/Executive Producer**

Michael G. Murphy ..... **General Manager**  
Dave Henson ..... **Director of Marketing and Communications**

Todd Schultz ..... **Director of Development**  
Mark Somers ..... **Director of Finance**  
Richard Seer ..... **Director of Professional Training**

Robert Drake ..... **Director of Production**  
Roberta Wells-Famula ..... **Director of Education**

## ARTISTIC

Jack DePalma ..... **Play Development Director**  
Samantha Barrie ..... **Casting Director**  
Bernadette Hobson ..... **Artistic Associate**

## PRODUCTION

Debra Pratt Ballard ..... **Associate Director of Production**  
Ron Cooling ..... **Company Manager**  
Carol Donahue ..... **Production Coordinator**  
Stage Management  
Leila Knox ..... **Production Stage Manager**  
Technical

Benjamin Thoron ..... **Technical Director**  
Wendy Berzansky ..... **Associate Technical Director**  
Sean Fanning ..... **Resident Design Assistant**  
Eliza Korshin ..... **Technical Assistant/Buyer**  
Christian Thorsen ..... **Stage Carpenter/Flyman, Globe**  
Carole Payette ..... **Charge Scenic Artist**  
Adam Bernard, Victoria Erbe, Rebecca Johnson, Edee Armand, Danny Griego ..... **Scenic Artists**  
Gillian Kelleher ..... **Master Carpenter**  
Robert Dougherty ..... **Master Carpenter, Festival**  
Mihai Antonescu, Steve Bosik, Matt Clark, Sheldon Goff, Mike Harris, Mark Henderson, Jack Hernandez, Jim Hopper, Rashaad Howell, Dan Klebingat, Greg McCambridge, Laura McEntyre, Josh McIntyre, Mongo Moglia, Mason Petersen, Stan Stauffer, Gilbert Vitela, Andrew Young ..... **Carpenters**  
Costumes

Stacy Sutton ..... **Costume Director**  
Charlotte Devaux Shields ..... **Resident Design Assistant**

Maureen Mac Niallais ..... **Assistant to the Director**  
Shelly Williams ..... **Design Assistant/Shopper**  
Erin Cass, Wendy Miller, ..... **Drapers**  
Swantje Tuohino ..... **Tailor**  
Su-Lin Chen ..... **Assistant Tailor**  
Babs Behling, Gwen Dunham, Anne Glidden Grace, Susan Sachs ..... **Assistant Cutters**  
Joan Mathison, Mary Miller ..... **Costume Assistants**  
Mark Baiza, Maria de La Mora, Rebecca Fabares, Nancy Liu, Nunzia Pecorara, Roxie Poynor, Sally Smith, Joanne Stypulkowska ..... **Stitchers**  
Teri Tavares ..... **Dyer-Painter**  
Erin Carignan ..... **Craft Supervisor**  
Sharon King ..... **Craft Artisan**  
Molly O'Connor ..... **Wig and Makeup Supervisor**  
Kim Parker ..... **Assistant to Wig and Makeup Supervisor**

Ana Maldonado, Vicky Martinez ..... **Wig Assistants**  
Beverly Boyd ..... **Wardrobe Supervisor**  
Stephanie Parker ..... **Wardrobe Supervisor (Sammy)**

Marnee Davis ..... **Globe Crew Chief**  
Lindsey Hall, Francisco Morales, Jeri Nicolas, Heather Premo ..... **Globe Run Crew**  
Beth Merriman ..... **Festival Crew Chief**  
Kristin Bongiovanni, Sarah Cognan ..... **Festival Run Crew**

Anna MacDonald, Noelle Van Wyk ..... **Copley Run Crew**  
Marie Jezbera ..... **Rental Agent**  
Properties  
Neil A. Holmes ..... **Properties Director**  
Kristin Steva Campbell ..... **Assistant to the Director**  
M.H. Schrenkeisen ..... **Shop Foreman**  
Rory Murphy ..... **Lead Craftsman**  
David Medina ..... **Properties Buyer**  
Kristi Hummel-Rosen ..... **Properties Assistant**  
Pat Cain ..... **Property Master, Globe**  
David Buess ..... **Property Master, Copley**  
Trevor Hay ..... **Property Master, Festival**  
Joshua Camp, Andy Estep, Virginia Provencher, Patricia Rutter ..... **Craftspeople**

## Lighting

Nate Parde ..... **Lighting Director**  
Jason Bieber ..... **Lighting Assistant**  
Tonnie Ficken ..... **Master Electrician, Globe**  
Jim Dodd ..... **Master Electrician, Copley**  
Kevin Liddell ..... **Master Electrician, Festival**  
Bonnie Breckenridge, Noah Gehr, Leah Nellman ..... **Followspot Operators**  
Bonnie Breckenridge, Katie Brost, Mark Dewey, Noah Gehr, Leah Nellman, Jason Rothberg, ..... **Electricians**

## Sound

Paul Peterson ..... **Sound Director**  
Erik Carstensen ..... **Master Sound Technician, Globe**  
R.J. Givens ..... **Master Sound Technician, Copley**  
Jeremy Nelson ..... **Master Sound Technician, Festival**  
Elizabeth Robson ..... **Sound Technician**  
Rachel Eaves ..... **Mic Runner, Globe**  
Dana Pickop ..... **Mic Runner, Festival**

## ADMINISTRATION

Suzanne Bradley ..... **Assistant General Manager**  
Daniel Baginski ..... **Executive Assistant**  
Mark Gingery ..... **Theatre Center Project Coordinator**

## Information Technology

Dean Yager ..... **Information Technology Manager**  
Thad Steffen ..... **Information Technology Asst. Mgr.**  
John Ralston ..... **Information Technology Assistant**  
Human Resources

Sandra Parde ..... **Human Resources Director**  
Maintenance  
Randy McWilliams ..... **Facilities Manager**  
Violanda Corona, Ismael Delgado, Miguel Gaspar, Roberto Gonzalez, Reyna Huerta, Jose Morales, Albert Rios, Maria Rios, Nicolas Torres ..... **Building Staff**

## PROFESSIONAL TRAINING

Llance Bower ..... **Program Coordinator**  
Maria Carrera, Cynthia Caywood, Ray Chambers, Gerhard Gessner, Jan Gist, Claudia Hill-Sparks, Fred Robinson, Liz Shipman ..... **MFA Faculty**  
Jeannie Marie Galioto, Ben Seibert, George Yé ..... **MFA Production Staff**

## EDUCATION

Kim Montelibano Heil ..... **Education Associate**  
Carol Green ..... **Speakers Bureau Coordinator**  
Amy Biedel, Marisela De la Parra, Monique Gaffney, JoAnne Glover, Janet Hayatshahi, Sarah Price, David Tierney ..... **Teaching Artists**

## FINANCE

Paula Nickodemus ..... **Senior Accountant**  
Trish Guidi ..... **Accounts Payable/Accounting Assistant**  
Adam Latham ..... **Payroll Coordinator/Accounting Assistant**  
Tim Cole ..... **Receptionist**

## DEVELOPMENT

Annamarie Maricle ..... **Associate Director, Institutional Grants**  
Marilyn McAvoy ..... **Major Gifts Director**  
Eileen Prisby ..... **Events Manager**  
Josh Martinez-Nelson ..... **Development Manager, Individual Annual Giving**  
Diane Addis ..... **Membership Administrator**  
Rachel Plummer ..... **Development Assistant**  
Diana Steffen ..... **VIP Donor Ticketing**  
Donor Services  
Lee Conaway, Monica Jorgensen, Barbara Lekes, Pamela Malone, Richard Navarro, Stephanie Reed, Judy Zimmerman ..... **Suite Concierges**

## MARKETING

Jeffrey Weiser ..... **Public Relations Director**  
Mia Fiorella ..... **Audience Development Manager**  
Jackie Anderson ..... **Publications Coordinator**  
Samantha Haskins ..... **Public Relations Associate**  
Claire Kennelly ..... **Marketing Assistant**  
Erica Dei ..... **Graphic Designer**  
Craig Schwartz ..... **Production Photographer**  
Monica Jorgensen, Susie Virgilio ..... **Marketing/Events Assistants**

## Subscription Sales

Scott Cooke ..... **Subscription Sales Manager**  
Anna Bowen-Davies, Arthur Faro, Andy Fink, Randi Hawkins, Pamela Malone, Yolanda Moore, Jessica Morrow, Ken Seper, Cassandra Shepard, Jerome Tullmann, Grant Walpole ..... **Subscription Sales Representatives**

## Ticket Services

Bob Coddington ..... **Ticket Services Manager**  
Marsi Fisher ..... **Ticket Operations Manager**  
Dani Meister ..... **Group Sales Manager**  
Marissa Haywood, Shouna Shoemake ..... **Lead Ticket Services Representatives**

Brian Abraham, Elizabeth Brown, Sarah Dittges, Tony Dixon, Merri Fitzpatrick, Michael Knudsen, Cassie Lopez, Caryn Morgan, Michael Pousson, Carlos Quezada, Molly Whittaker ..... **Ticket Services Representatives**

## PATRON SERVICES

Mike Callaway ..... **Theatre Manager**  
David Carson, Rob Novak ..... **House Managers**  
Kristen Cairns ..... **Front of House Assistant**  
Elaine Gingery ..... **Food and Beverage Manager**  
Haydee Aldas ..... **Food and Beverage Assistant Manager**

Michelle Elliott, Miranda Halverson, Brock Roser, Anne-Marie Shafer, Tess Thompson, Molly Quillion-McEwan ..... **Pub Staff**

Rose Espiritu, Stephanie Rakowski, Stephanie Reed ..... **Gift Shop Supervisors**

Security/Parking Services  
Rachel "Beahr" Garcia ..... **Security/Parking Services Supervisor**

Irene Herrig ..... **Associate Supervisor of Security**  
Dallas Chang, Sherisa Eselin, Janet Larson, Jeffrey Neitzel ..... **Security Officers**  
Mark Anguiano, Nicole Apple, Patricia Ceja, Deborah Elliott, Stephanie Eberl, Nicole Hagemeyer, Michael Watts ..... **Parking Lot Attendants**  
Andrew Ashton, Taylor Schmeling ..... **V.I.P. Valet Attendants**

Jack O'Brien ..... **Artistic Director Emeritus**  
Craig Noel ..... **Founding Director**