

The Professional Actor Training Program is a joint venture of
The Old Globe and the University of San Diego.

The program nationally recruits seven students each year to participate
in an intensive two year course of graduate study in classical theatre.

Private funding for the Master of Fine Arts in Dramatic Arts
program is contributed through an endowment established by
DONALD AND DARLENE SHILEY

Additional Support for the program is provided by
THE DOROTHY BROWN ENDOWMENT FUND
and the **LOUIS YAGER CANTWELL FOUNDATION**



For more information, please visit us online at:

WWW.GLOBEMFA.ORG

Chair, Graduate Theatre: **Richard Seer**
Program Coordinator: **Lance Bower**



BY

WILLIAM SHAKESPEARE

November 14-22, 2009 The Old Globe Arena Stage
at the James S. Copley Auditorium, San Diego Museum of Art

Presented by

The Old Globe/University of San Diego Graduate Theatre Program

The Old Globe / University of San Diego Graduate Theatre Program presents

The Two Gentlemen of Verona

by William Shakespeare

Adaptation by James Winker

Sean Fanning Michelle Hunt Souza Jason Bieber Paul Peterson
Scenic Design Costume Design Lighting Design Sound Design

Jan Gist Liz Shipman Ray Chambers George Yé
Voice & Speech Movement Dramaturg Fight Choreography

John Kander Robert Barry Fleming Natashja Kelly
Original Music Musical Direction Stage Manager

Cast

Augusta/DoloresShirine Babb
ProteusAndrew Dahl
Sir EglamourGrayson DeJesus
AntonioBen Diskant
ThurioChristian Durso
SylviaCatherine Gowl
SpeedKevin Hoffmann
LaunceAndrew Hutcheson
DukeSteven Marzolf
ValentineJordan McArthur
HostessBrooke Novak
JuliaAubrey Saverino
CarlottaRyman Sneed
Lucetta/RamonaBree Welch

Directed by
Richard Seer



Shirine Babb



Andrew Dahl



Grayson DeJesus



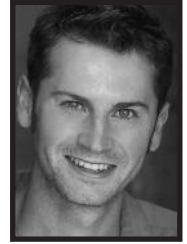
Ben Diskant



Christian Durso



Catherine Gowl



Kevin Hoffmann



Andrew Hutcheson



Steven Marzolf



Jordan McArthur



Brooke Novak



Aubrey Saverino



Ryman Sneed



Bree Welch

Shirine Babb GLOBE/USD MFA: Debut. LONDON: *Widows*. NYC: Pulse Ensemble; *A Midsummer Night's Dream*, Ensemble Studio Theatre; *Trickle*, Duke on 42nd St; *Single Black Female*, Women's Project; *Aliens With Extraordinary Skills*, 29th Rep Theatre; *A Role Once Played* (2004 AUDELCO Nominee), American Girl Place; *American Girls Revue*, The Airport Playhouse; *Ragtime*. REGIONAL: *Twelfth Night*, *Measure for Measure*, *Antony & Cleopatra*, *She Stoops to Conquer*, *A Christmas Carol*, *Omnium Gatherum*, *Play To Win: The Jackie Robinson Story*, *Almost Heaven: The John Denver Story*, *Bessie: Life & Music of Bessie Smith*. TV/FILM: *All My Children*, *Picture Perfect*. COMMERCIAL: WE Network, Optimum Light Path, Fair Housing Act. Shirine holds a MA from East 15 Acting School, UK and BFA from SUNY Fredonia.

Andrew Dahl GLOBE/USD MFA: *A Midsummer Night's Dream*, *The Water Engine*. THE OLD GLOBE: *Six Degrees of Separation*, *Cyrano de Bergerac*, *Twelfth Night*, *Coriolanus*. MOSCOW: *If This is a Man*. NEW YORK: *The Winter's Tale*, *A Flea in Her Ear*, *The Twelfth Labor*. DARTMOUTH COLLEGE: *The Complete Works of William Shakespeare Abridged*, *Comedy of Errors*, *As You Like It*, *Dear Brutus*, *A View from the Bridge*, *Time Remembered*, *Boy Gets Girl*. Andrew holds a BA in Theater from Dartmouth College.

Grayson DeJesus GLOBE/USD MFA: Debut. SHAKESPEARE SANTA CRUZ: *Romeo & Juliet*, *All's Well That Ends Well*, *The Antiquarian's Family*. ELSEWHERE: *Winnemucca (Three Days In The Belly)*, Fringe NYC, Minnesota Fringe Festival. FILM, Theater of Note; *New Playwrights Project*, TheatreWorks; *Here I Go Boys*, *A Diner A Shiner*, *New Beulah*, NY Shelby Company. BA in Theatre from Occidental College.

Ben Diskant GLOBE/USD MFA: Debut. REGIONAL: *Speech and Debate*, TheatreWorks, Hartford; *The History Boys*, Studio Theater, D.C.; *Anything Goes*, Williamstown Theatre Festival; *Freedom Train*, Theaterworks/USA. Ben holds a Bachelor's of Music and a BA in Sociology from Northwestern University.

Christian Durso GLOBE/USD MFA: Debut. NEW YORK: *Nocturne*, Under St. Marks; *Cinephilia*, Theatre Row; *Spring Awakening*, Blue Heron Arts Theatre; *A Midsummer Night's Dream*, Ensemble Studio Theatre; *Julius Caesar*, Theatre For A New City; *Shoe Polish*, 13th Street Rep; *Crazy Gary's Mobile Disco*, The Tank. REGIONAL: *Macbeth*, *A Midsummer Night's Dream*, Shakespeare Santa Cruz; *Macbeth*, RADA; *Minnesota Moon*, Boulder Fringe. TELEVISION: *One Life To Live* (ABC); *Guiding Light* (CBS). Christian holds a BFA from NYU's Tisch School of the Arts.

Catherine Gowll GLOBE/USD MFA: *A Midsummer Nights Dream*, *The Water Engine*. THE OLD GLOBE: *The Women*, *Six Degrees of Separation*, *Coriolanus*, *Cyrano de Bergerac*, *Twelfth Night*. NEW YORK: *'Twas*, *The Director*, *Oh The Humanity and Other Exclamations*, Flea Theater. *Hamlet*, *The Great God Brown*, *Don Juan*, *A Piece of My Heart*, *Clash By Night*. REGIONAL: *The Laramie Project: Ten Years Later*, La Jolla Playhouse. *The Taming of the Shrew*, *Othello*, Virginia Shakespeare Festival. *Proof*. ELSEWHERE: *Julius Caesar*, *Richard III*, *Memory of Water*, *Simpatico*, *Camino Real*, and many new works in New York, Boston and at the Edinburgh Fringe Festival. Catherine holds a BA in History and Literature from Harvard.

Kevin Hoffmann GLOBE/USD MFA: *A Midsummer Night's Dream*, *The Greeks: The Murders*. THE OLD GLOBE: *Six Degrees of Separation*, *Cyrano de Bergerac*, *Twelfth Night*, *Coriolanus*. REGIONAL: *Antony and Cleopatra*, *Merry Wives of Windsor* The Theater at Monmouth. *Proof* Barksdale Theatre. TV: *As The World Turns*, *All My Children*. COMMERCIALS: *Sony*, *Mediacom Cable*, *Callaway Golf*, *Sweetbay Supermarkets*, *RBC Bank*, *Fidelity Financial*. BFA in Acting from Elon University.

Andrew Hutcheson GLOBE/USD MFA: Debut. NEW YORK CREDITS: *Elizabeth Rex* (off-Broadway), *Kosher Harry*, *Richard III*, Nicu's Spoon; *Romeo and Juliet*, Staten Island Shakespeare; *Titus Andronicus*, Rising Phoenix. NATIONAL TOURS: *Julius Caesar*, *A Midsummer Night's Dream*, Shakespeare Theatre of New Jersey; *Beauty and the Beast*, American Family Theatre. REGIONAL: *Taming of the Shrew*, *Much Ado about Nothing*, *The Crucible*, *A Lion in Winter*, *As You Like It*, *Jungalbook*, Austin Theatre; *Julius Caesar*, *Twelfth Night*, *1776*, *Tartuffe*, *Romeo and Juliet*, *Love's Labour's Lost*, Texas Shakespeare Festival; Andrew has a BA in Acting from The University of Texas at Austin.

Steven Marzolf GLOBE/USD MFA: *A Midsummer Night's Dream*, *The Greeks: The Murders*. THE OLD GLOBE: *Six Degrees of Separation*, *Cyrano de Bergerac*, *Twelfth Night*, *Coriolanus*. CHICAGO CREDITS: *Fair Use*, *August: Osage County*, Steppenwolf Theatre Company; *The Comedy of Errors*, *Hamlet*, *Much Ado About Nothing*, *The Merry Wives of Windsor*, Chicago Shakespeare Theater; *As You Like It*, Writers' Theatre;

Twilight of the Golds, Apple Tree Theatre; *A Christmas Carol*, Provision Theater. REGIONAL: *The Laramie Project: Ten Years Later*, Lo Jolla Playhouse; *Richard III*, *Mary Stuart*, *A Christmas Carol*, *Napoli Milionaria*, Milwaukee Repertory Theater; *The Romeo and Juliet Story*, Notre Dame Summer Shakespeare; *Twelfth Night*, *The Tempest*, Riverside Theatre; *Two Rooms*, In Tandem Theatre.

Jordan McArthur GLOBE/USD MFA: *A Midsummer Night's Dream*; THE OLD GLOBE: *Six Degrees of Separation*, *Cyrano de Bergerac*, *Twelfth Night*, *Coriolanus*. VIRGINIA SHAKESPEARE FESTIVAL: *What the Butler Saw*, *Romeo and Juliet*, *Macbeth*; ELSEWHERE: *Of Mice and Men*, *Arcadia*, *The Importance of Being Earnest*, *The Scarlet Letter*. Jordan holds a BA in Theater from Christopher Newport University in Virginia.

Brooke Novak GLOBE/USD MFA: *A Midsummer Night's Dream*, *The Greeks: The Murders*. THE OLD GLOBE: *Coriolanus*, *Cyrano de Bergerac*. SHAKESPEARE SANTA CRUZ: *The Antiquarian's Family*, *All's Well That Ends Well*. ELSEWHERE: *Macbeth*, *As You Like it*. EDUCATION: BA in Theater, Occidental College.

Aubrey Saverino GLOBE/USD MFA: *A Midsummer Night's Dream*, *The Greeks: The Murders*. THE OLD GLOBE: *Twelfth Night*, *Coriolanus*. LOS ANGELES CREDITS: *Twelfth Night*, *Henry IV Part I & II*, The Independent Shakespeare Company; *Othello*, *Merry Wives of Windsor*, Shakespeare by the Sea; *Romeo & Juliet*, El Portal Theatre; *An Impending Rupture of the Belly*, Furious Theatre Company; *Richard III*, *Climbing Everest*, The Colony Theater; *Wit*, *Nicholas Nickleby*, The Production Company; *Inventing Van Gogh*, *The Imaginary Cuckhold*, *Creep*, The Chance Theater. OCCIDENTAL COLLEGE: *A Midsummer Night's Dream*, *The Cherry Orchard*, *Arcadia*, *We Won't Pay! We Won't Pay!* Aubrey holds a BA in Theater from Occidental College. www.aubreysaverino.com

Ryman Sneed GLOBE/USD MFA: Debut. OFF BROADWAY: *None of the Above*, The Lion Theater, Theater Row. NEW YORK: *The Tempest*, *Seven Short and Very Short Plays by Jean- Claude Van Itallie*, *Pied a Terre*, *The Crucible*. COMMERCIAL: *Starz Movie Network*, "Buzzed" PSA. Ryman holds a BFA in Acting from Marymount Manhattan College.

Bree Welch GLOBE/USD MFA: Debut. Houston Credit: *The Tempest*, *Hamlet*, *Titus Andronicus*, *Love's Labors Lost*, *Romeo and Juliet*, *Julius Caesar*, *Cymbeline*, *As You Like It*, *Measure For Measure*, *Taming of the Shrew*, Houston Shakespeare Festival; *The Rabbit Hole*, Stages Reperatory Theatre; *Antigone*, Classical Theatre Company; *One Flea Spare*, Mildred's Umbrella; *Enchanted April*, *The Odd Couple*, *The Heiress*, Unity Theatre; *Snow White*, *The Wolf and the Foolish Little Kids*, Children's Theatre Festival. Bree received her BA in Acting/Directing from The University of Houston.

Richard Seer (Director) An award-winning actor and director, Richard Seer has directed and/or performed on Broadway, off-Broadway, on film and television, and in over seventy productions at regional theatres in this country and Great Britain, including: The Goodman Theatre, The Kennedy Center, The Stratford Shakespeare Festival, The Brooklyn Academy of Music, The Huntington Theatre Company in Boston, Washington's Playwrights' Theatre, San Jose Repertory Theatre, Studio Arena Theatre, The Edinburgh Festival in Scotland, and The Sybil Thorndike Repertory Theatre in England, to name a few. He originated the role of Young Charlie in the 1978 Tony award-winning production of Hugh Leonard's *Da*. He received the Theatre World Award for his performance. At The Old Globe, he has directed productions of *The Price*, *Romeo & Juliet*, *Who's Afraid of Virginia Woolf?*, *Trying*, *Fiction*, *Blue/Orange* (Critics Circle Award), *All My Sons*, *Da*, and *Old Wicked Songs* (Patte Award). Other recent directing assignments include *Third* for the Huntington Theatre Company and *Sonia Flew* for the San Jose Repertory Theatre. He received his Master of Fine Arts degree in directing from Boston University, where he was awarded the prestigious Kahn Directing Award in 1985. In 1990 he was invited to return to Boston University's School for the Arts as an Associate Professor of acting and directing. Chair of the Graduate Theatre department, Professor Seer has been head of the Old Globe/University of San Diego Graduate Theatre program since 1993.

Jason Bieber (Lighting Designer) THE OLD GLOBE: *The Mystery of Irma Vep, Since Africa*. GLOBE/USD MFA: *Richard III, An Absolute Turkey, Marat/Sade, Uncle Vanya*. MO'OLELO PERFORMING ARTS COMPANY: *Cowboy Versus Samurai* (2007 Patté Award), *Permanent Collection, Night Sky* (2008 Patté Award). SAN DIEGO REPERTORY THEATRE: *Sweet 15 Quinceañera*. STARLIGHT THEATRE: *Annie, High School Musical, Nine, My Fair Lady*. DIVERSIONARY THEATRE: *Bluebonnet Court, No Exit, Scrooge in Rouge*. MOXIE THEATRE: *Bleeding Kansas*. NORTH COAST REP: *Talley's Folly, Charlie's Aunt, A Christmas Carol*. NEW VILLAGE ARTS: *A Midsummer Night's Dream, Orphans, Prelude to a Kiss*. UNIVERSITY OF SAN DIEGO: *Picasso at the Lapin Agile, Muertos, The Crucible, Songs for a New World, American Song, Einstein's Dreams*. Mr. Bieber holds a BFA from the Carnegie Mellon University School of Drama.

Ray Chambers (Dramaturge) Since first training with the Old Globe in the mid-eighties, Mr. Chambers has worked as a classical actor and director with numerous regional theatres across the country. For nearly two decades as an Associate Artist with the Alabama Shakespeare Festival, Ray has worked as actor, director, writer, and instructor and served as Director of the Master of Fine Arts/Professional Actor Training Program at ASF since 2001. Regional acting credits include title roles in *Hamlet, The Count of Monte Cristo, Richard III, Coriolanus, King John, Henry V, Tartuffe*; and leading roles in *Julius Caesar, The Winter's Tale, The Rivals, Henry IV, Cat On a Hot Tin Roof, Great Expectations, The Importance of Being Earnest, and Saint Joan* among many others. Credits at the Old Globe include *Antony and Cleopatra, The Comedy of Errors, The School for Scandal, Coriolanus, Love's Labours Lost, Hamlet and Macbeth*. He has taught Acting and Classical Text in master classes and workshops for universities and theatres around the country and has served as a national board member of the University/Resident Theatre Association.

Sean Fanning (Set Designer) OLD GLOBE/USD: *A Midsummer Night's Dream, THE OLD GLOBE: KINGDOM*. Cygnet Theatre: *Noises Off, Mauritius, A Christmas Carol, The Receptionist, A Little Night Music, The Matchmaker*. SAN DIEGO STATE UNIVERSITY: *Zombie Prom* (2008 Patte Award for Scenic Design), *The Grapes of Wrath, The People v. Mona, A Man of No Importance*. MIRACLE THEATRE PRODUCTIONS: *Das Barbecue*. SONOMA STATE UNIVERSITY: *Picasso at the Lapin Agile, Cat on a Hot Tin Roof, Amahl and the Night Visitors*. Sean is the Resident Design Assistant at the Old Globe, and has assisted at the Los Angeles Opera and the San Diego Opera. He holds an MFA in Scenic Design from San Diego State University.

Robert Barry Fleming (Musical Director) An Associate Professor and Department Chair of Theatre Arts at the University of San Diego joined the Theatre Arts faculty at USD in 2004. He is a director, actor, choreographer and educator. He won the SDTCC 2007 Craig Noel Award for Outstanding Featured Performance in a Musical (*Ain't Misbehavin'* at The San Diego Repertory Theatre) and a Dramalogue Award for Featured Performance in a Play (*Puddin' And Pete @ The Old Globe*). Directing and choreography credits include: *All Shook Up* (Center Repertory Theatre), *The Little Dog Laughed* (The Diversionary), *Ain't Misbehavin'* (Center Repertory Theatre), *The Game Of Love And Chance* (San Jose Rep), *Thunder Knockin' On The Door* (ACT), *Twelfth Night* (Alabama Shakespeare Festival), *Marat/Sade* (USD). He has served as dialect and vocal coach for *Bonnie And Clyde, The Adding Machine, Most Wanted* and *The Wiz* (La Jolla Playhouse), *A View From The Bridge* and *Death Of A Salesman* (Arena Stage), *Sight Unseen* (The Old Globe). His professional acting credits include *Ragtime* and *Stand-Up Tragedy* (Broadway), *Insurrection: Holding History* (The Public/NYSF), *Good Boys* (Mo'olelo Performing Arts Company) and productions at The Old Globe, The Mark Taper Forum, and the Guthrie. Film/TV credits include *L.A. Confidential, Twilight Of The Golds*, the Disney Channel's *Adventures In Wonderland* (series regular), and numerous guest spots. Robert Barry received his M.F.A. from The University of Alabama/ Alabama Shakespeare Festival/ Professional Actor Training Program.

Jan Gist (Vocal Coach) Coach at The Old Globe and USD's Graduate Theatre program since 2001. Prior to that, she was the Voice and Speech coach at Alabama Shakespeare Festival for 9 years and 140 productions. Other credits include Oregon Shakespeare Festival, Utah Shakespearean Festival, The Shakespeare Theatre of D.C., La Jolla Playhouse, Mo'olelo Theatre, Arena Stage, Milwaukee Rep., PlayMakers' Rep., Indiana Rep, The Shakespeare Center of America, American Players Theatre. Other teaching and workshop credits include: California State University, Long Beach, Cal. Rep. Co., Los Angeles City College, Voice And Speech Trainers Association Conference--Shakespeare's Shapely Language, Actors Theatre of Louisville, and Carnegie Mellon University. Business and Corporate Clients include: U.P.S, Allegro Resorts, Virgil Scudder and Associates, Thomas Jefferson School of Law. Ms. Gist is an originating and published member of the Voice And Speech Trainers Association, and has led many presentations, panels and workshops for them and American Theatre in Higher Education. Other publications include exercises in *The Complete Voice and Speech Workout* book and CD, and dialect contributions in *More Stage Dialects*. Jan recently led Shakespeare workshops at Central School of Speech and Drama in London and was invited to a voice teacher's exchange at The Moscow Art Theatre in Russia.

Michelle Hunt Souza (Costume Design) Local credits: *Miss Electricity* (La Jolla Playhouse); *Pericles, Romeo y Julieta* (Old Globe); *Rabbit Hole, Shipwrecked! An Entertainment, The Dresser, A Christmas Carol, Don't Dress For Dinner, String of Pearls, Dracula* (North Coast Rep); *Christmas on the Edge, Joseph and the Amazing Technicolor Dreamcoat* (Lamb's Players); *Dog Act* (Moxie); *A Bright Room Called Day* (Diversionary); *Playboy of the Western World* (New Village Arts). UC San Diego Credits: *Good Breeding, The Love of the Nightingale, The Nightshade Family, Measure for Measure, 11 Hills of San Francisco, danceAlive!* Michelle's designs for *Dog Act, Bright Room, and The Love of the Nightingale* earned Patté Awards for Theatrical Excellence from KPBS. Michelle is a 2007 alumna of the MFA program at UCSD.

John Kander (Original Music) The Tony and Emmy Award-winning composer has written music for award-winning music for theater, film, and television. He is best known for his collaborative efforts with lyricist Fred Ebb. For almost four decades the partners produced hits for Broadway including *Cabaret, Chicago, Zorba, Kiss of the Spider Woman*, and many others.

Natashja Kelly (Stage Manager) SDSU Opera Theater: *One Acts, Street Scene*. San Diego State University: *Side Man, Flight of the Lawnchair Man, Zombie Prom*. Young Playwrights Project: *Plays by Young Writers 2008*. Assisted for- Lyric Opera San Diego: *The Mikado, A Waltz Dream*. North Coast Repertory Theatre: *The Big Bang, Jacques Brel, A Christmas Carol*. San Diego State University: *Alice in Wonderland*. Interned for- The Old Globe: *Moonlight and Magnolias, Shakespeare Festival '06*. Starlight Theatre: Summer seasons '03 and '04. Natashja has a BA in Theatre Arts from San Diego State University.

Paul Peterson (Sound Design) THE OLD GLOBE: Over 75 productions, including: *The Savannah Disputation, The Mystery of Irma Vep, Cornelia, The Price, Kingdom, Six Degrees of Separation, The Women, The Pleasure Of His Company, The American Plan, Hay Fever, Bell, Book and Candle, Edward Albee's Who's Afraid of Virginia Woolf?, Two Trains Running, Hold Please, Restoration Comedy, The Four of Us, Pig Farm, The Sisters Rosensweig, Trying, Moonlight and Magnolias, Vincent in Brixton, I Just Stopped By to See the Man, Lucky Duck, The Intelligent Design of Jenny Chow, Blue/Orange, Time Flies, Pentecost, Compleat Female Stage Beauty, Dr. Seuss's How the Grinch Stole Christmas!, The Boswell Sisters, Crumbs from the Table of Joy*. ELSEWHERE: San Jose Repertory Theatre, Centerstage, Milwaukee Rep, La Jolla Playhouse, Sledgehammer Theatre (Associate Artist), Mo'olelo Performing Arts Company, The Wilma Theatre, L.A. TheatreWorks, San Diego Repertory Theatre, Florida Studio Theatre, Lorraine Hansberry Theatre, North Coast Rep, Diversionary Theatre, Cape Fear Regional Theatre, Hope Summer Repertory Theatre, Malashock Dance & Company, The University of San Diego, San Diego State University, and the Freud Theatre at UCLA. EDUCATION: BFA in Drama with an emphasis in Technical Design from San Diego State University.

Liz Shipman (Movement) Co-Founder/Artistic Director for the Kings County Shakespeare Company (KCSC) in NYC from 1983-2001. Liz has directed and/or choreographed productions for KCSC (over 50 productions), New Avenue Theatre Project, Utah Shakespearean Festival, Repertory Theatre of St. Louis, The Old Globe Theatre and lots of little loft-type theatres throughout NYC. She has directed, choreographed and taught movement and acting at the American Academy of Dramatic Arts, Technique for the Whole Actor Studio, T. Schreiber Studio, Manhattan Marymount College, The Atlantic Theatre Company, Webster Conservatory of Theatre Arts, USD's Undergraduate Theatre Arts Department, and The Old Globe/USD Graduate Acting Department where she serves as a member of the core faculty. Favorites projects include *Genet/Hamlet, Winter's Tale, Rough Crossing, Love's Labour's Lost, Midsummer Night's Dream, Taming of the Shrew* and Aphra Behn's *The Rover, Blood Wedding, On The Verge, Lysistrata, O Jerusalem, Fifth of July, and The Creation Project*.

PRODUCTION STAFF

Assistant Stage Manager: **Amanda Johnson**

Assistant to the Director: **Alison Dressel**

USD Costume Shop Manager: **Jeannie Galioto**

Master Electrician: **Jim Dodd**

Dresser: **Melissa Taylor**

Sound Operator: **RJ Givens**

Globe Rental Assistant: **Marie Jezbera**

Special Thanks to **The Old Globe Scene Shop** for their work in this production.