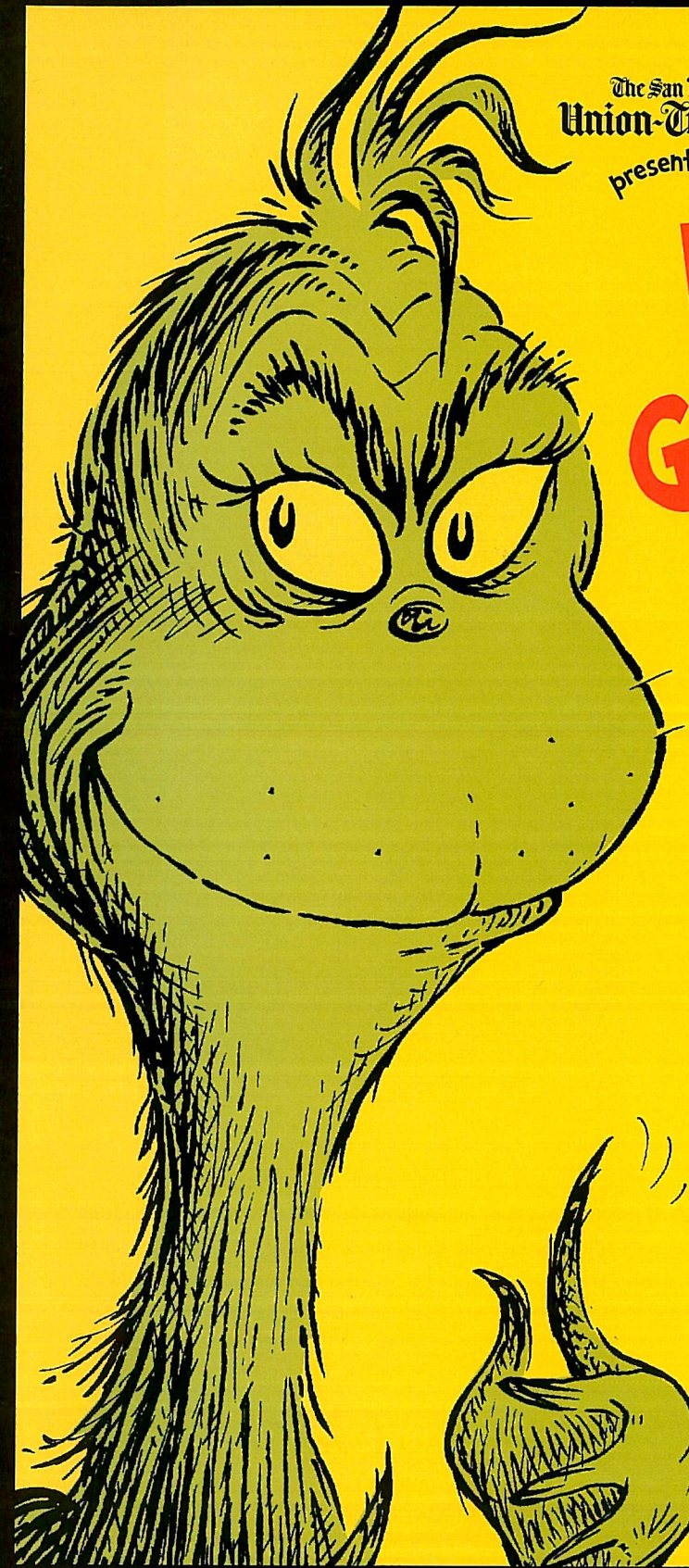


THE OLD GLOBE

# performances

at the **OLD GLOBE THEATRE**

NOVEMBER 2004

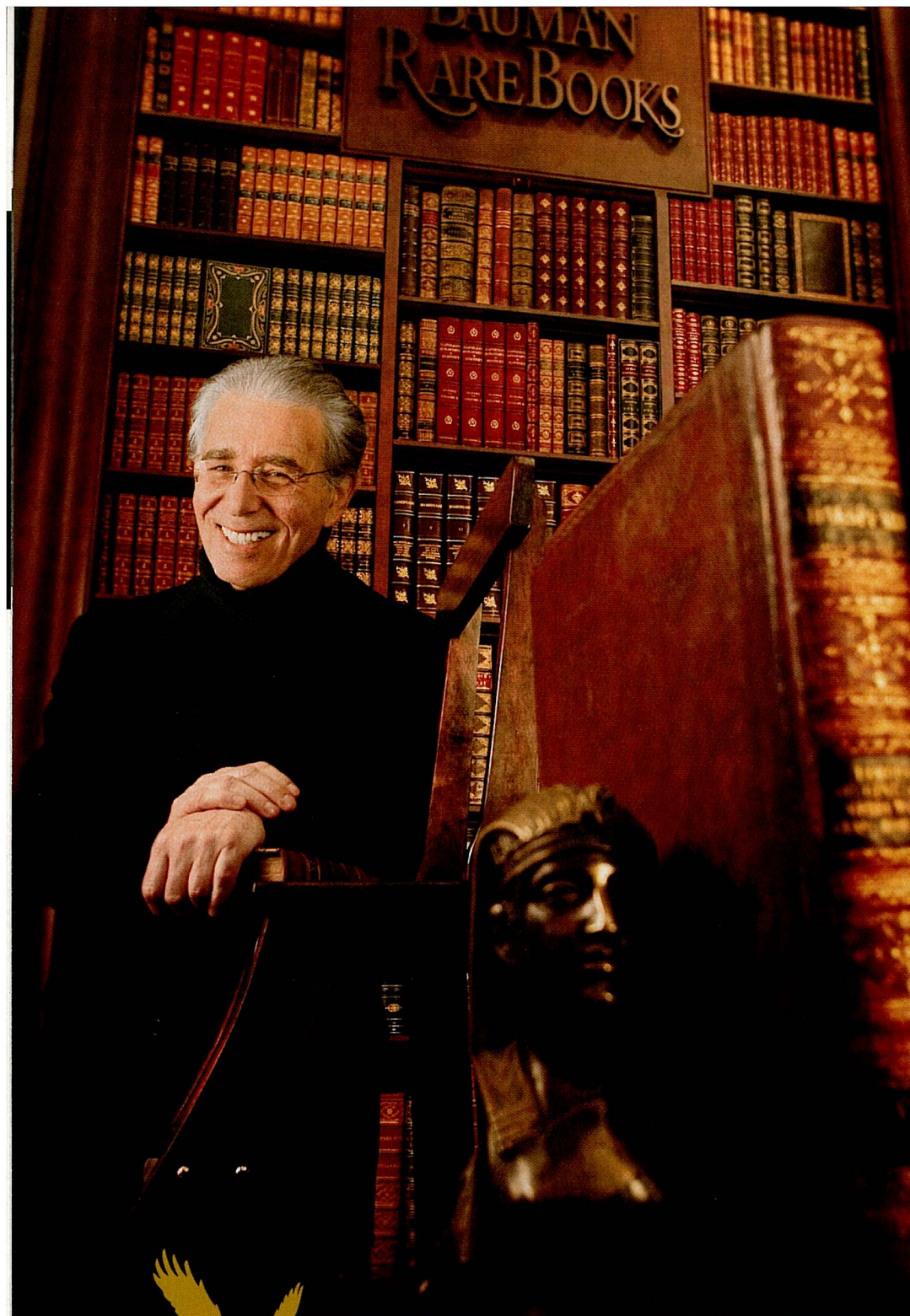


The San Diego  
**Union-Tribune.**  
presents

Dr. Seuss'  
**How The  
GRINCH  
STOLE  
CHRISTMAS!**

November 21 - December 31

Dr. Seuss properties TM & (c) 2004 Dr. Seuss Enterprises, L.P. All Rights Reserved.



*“First Republic  
is one of a kind.  
They deliver a  
rare brand of  
old-fashioned,  
quality service.”*

David Bauman  
Owner, Bauman Rare Books



**FIRST REPUBLIC BANK**

It's a privilege to serve you®.

PRIVATE BANKING • LENDING • INVESTMENT, BROKERAGE & TRUST SERVICES

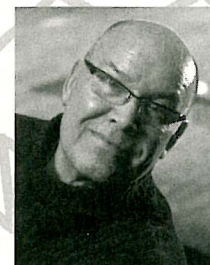
San Francisco Los Angeles Santa Barbara Newport Beach San Diego Las Vegas New York

1-888-828-9889 • www.firstrepublic.com • NEW YORK STOCK EXCHANGE SYMBOL: FRC • MEMBER FDIC • EQUAL HOUSING LENDER

Welcome to



**THE OLD GLOBE**



HAPPY GRINCHMAS TO YOU ALL!

Let's see, how long has it been since we first welcomed you to our Grinchmas gathering? Six years? Seven, is it?

I keep running into towering young men and women who embrace me in parking lots and other equally unexpected locations with the eager explanation ... “Jack! I was in *the Grinch* in 1999” or something equally puzzling. And they are no longer “Who Size 3,” I assure you. It seems we've had some impact after all.

No, it was not within the power of the Globe's crystal ball to see then to what degree this elegant, charming, classic tale that is at the heart of all we collectively hold special and great about this “giving” time of year would find its way into the ongoing family life of San Diego. This is very much how traditions are born.

And how proud and happy we are to welcome this company of familiar, veteran, and even debuting Who-players! I, in particular, tip my hat to Associate Director, Brendon Fox, whose personal passion and commitment to this wonderful piece has kept the gloss on it when I have been necessarily in some limbo or another.

We all of us here at the Globe are thrilled once more to share this glorious Christmas present from Audrey Geisel to the Globe and now to share it with you — the very audience for whom it was intended.

JACK O'BRIEN  
Artistic Director



Thank you for joining us for this wonderful holiday season at The Old Globe. It has been an incredible year for the Theatre, having just wrapped up the enormously successful world-premiere musical, *Dirty Rotten Scoundrels*, as well as the exciting west coast premiere of *Fiction*. And now we welcome back for its sev-

enth year our annual holiday tradition, Dr. Seuss' *How the Grinch Stole Christmas!*, made possible through the generosity of Audrey Geisel, *The San Diego Union-Tribune*, and other generous sponsors.

We are so pleased to be able to bring this delightful event to San Diego year after year, along with many *Grinch* outreach programs in the community. In addition to providing 4,000 free tickets for underserved children throughout the run, the Globe is once again presenting the Grinch Children's Reading Initiative, an ongoing literacy project for students involved in our annual Seuss-abration event. We are also delighted to host the second annual Grinch Family Experience, a wonderful family gala, created to help raise money for the Globe's education and outreach programs, while offering an exciting day of hands-on theatre activities for children and families.

This holiday also marks the return of Teatro Máscara Mágica's *La Pastorela* — the traditional English/Spanish holiday play. Last year's production proved so popular that we are thrilled to bring back this enchanting bi-lingual family event — this time in the intimate Cassius Carter Centre Stage.

At this time of year I encourage you to consider making or renewing your year-end or special holiday gift in support of The Old Globe and all that you have come to cherish about the institution — from the *Grinch*, to our thrilling Broadway-bound musicals, to the glorious Summer Shakespeare Festival. Ticket sales cover only 50% of the cost of mounting these world-class productions, and we rely heavily on your contributions to help ensure the artistic vitality of the Globe today and for years to come. We sincerely thank you for your ongoing support, and wish you and your families all the best this holiday season.

LOUIS G. SPISTO  
Executive Director

The Old Globe is deeply grateful to its 2004 Season Sponsors, each of whom has made an annual donation of \$50,000 or greater. These gifts are critical to maintaining the theatre's high quality of artistic programming, and award-winning work in the community. The Board, staff and artists of the Globe are honored by this endorsement of the theatre's work.

**The Lipinsky Family**

**Donald and Darlene Shiley**

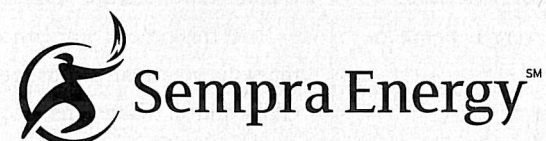
**Sheryl and Harvey P. White**

**Karen and Donald Cohn**

**Conrad Prebys**

**Anonymous**

**WELLS  
FARGO**



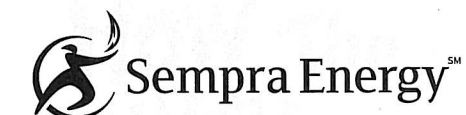
**QUALCOMM®**



Season Sponsors receive the ultimate level of access, recognition, benefits and services.

To join this most cherished group of friends, please contact Todd Schultz,  
Director of Development, at (619) 231-1941 x2310.

**The Old Globe**  
would like to thank the following supporters:



As part of its commitment to support arts and cultural programs that enhance the quality of life in San Diego, Sempra Energy has been a long-time partner of the Globe's artistic endeavors. In addition to Season sponsorship and support of educational youth programs for over a decade, Sempra Energy has helped the Globe launch two new musicals which enjoyed incredible success on Broadway — *Damn Yankees* and the sold-out San Diego world premiere of *The Full Monty*.



Bank of America continues its strong support of the Globe with their support of Dr. Seuss' *How the Grinch Stole Christmas!*. We remain extremely grateful to Bank of America for their valued partnership in providing both world-class theatre and outstanding arts education programs.

**We would like to give a special thanks to**



for their generous support of our Grinch Children's Matinee Series. Target's generosity is helping the Globe to provide thousands of underserved children the opportunity to see Dr. Seuss' *How the Grinch Stole Christmas!* this holiday season.

The Old Globe gratefully acknowledges  
the extraordinary support of our production sponsor  
for Dr. Seuss' *How the Grinch Stole Christmas!*,

The San Diego  
**Union-Tribune.**

We also wish to acknowledge and thank

**Audrey S. Geisel**

and

**The San Diego Foundation**

**Dr. Seuss Fund**

for bringing this holiday production to San Diego,  
and for their outstanding support of The Old Globe.



THE OLD GLOBE

The San Diego  
**Union-Tribune.**

presents

Dr. Seuss'  
**How The  
GRINCH  
STOLE  
CHRISTMAS!**™

Book & Lyrics by

**Timothy Mason**

Music by

**Mel Marvin**

Scenic Design

**John Lee Beatty**

Costume Design

**Robert Morgan+**

Lighting Design

**Pat Collins**

Sound Design

**Paul Peterson**

Stage Manager

**Leila Knox\***

Assistant Stage Manager

**Tracy Skoczelas\***

Assistant Director

**Duane Daniels**

Associate Director

**Brendon Fox**

Associate Musical Direction/Conductor

**Lisa LeMay**

Choreography

**John DeLuca**

Musical Direction

**Phil Reno**

Directed by

**Jack O'Brien**

\* Members of Actors' Equity Association, the Union of Professional Actors and Stage Managers in the United States.  
+Associate Artist of The Old Globe

Produced by special arrangement with Dr. Seuss Enterprises, L.P.  
*How the Grinch Stole Christmas!* book and characters™ and © 1957 Dr. Seuss Enterprises, L.P.  
Dr. Seuss properties™ & © 2004 Dr. Seuss Enterprises, L.P. All Rights Reserved.  
Originally commissioned by Minneapolis Children's Theater, Minneapolis, Minnesota  
Original Stage Manager, D. Adams.

# Cast of Characters

IN ORDER OF APPEARANCE

*Old Max* ..... Ken Land\*

*Cindy-Lou Who* .....Shawn Moriah Sullivan (W) -or- Keilani Joy Spahn (R)

*J.P. Who* ..... James Vasquez\*

*Mama Who* .....Melinda Gilb\*

*Grandpa Seth Who* ..... Phil Johnson\*

*Grandma Who* ..... Eileen Bowman\*

*Boo Who* .....Joe Metcalf (W) -or- Ari Lerner (R)

*Annie Who* .....Anita Deshea Lewis (W) -or- Anna Strickland (R)

*Danny Who* .....Corey Hable (W) -or- Adam Faison (R)

*Betty Who* .....Joy Newbegin (W) -or- Caroline Hyatt (R)

*Grown-up Whos* ..... Alex Apostolidis\*, Danielle Forsgren\*,  
Corey Greenan\*, Ron Christopher Jones\*,  
Warren G. Nolan, Jr.\*, Jessa Watson\*

*Teen Whos* ..... Steven Jones (W) -or- Charlotte Mary Wen (R)

*Little Whos* .....Halle Hoffman (R), Sarah Pence (W)  
Katheryne Penny (R), Austin Michael Potts (W)  
Kathleen Sullivan (W), Celia Tedde (W)  
Janelle Wen (R), Nathan Wetter (R)

*Young Max* ..... Rusty Ross\*

*The Grinch* ..... David Brannen\*

W=White Group

R=Red Group

\*Member of Actors' Equity Association, the Union of Professional Actors and Stage Managers in the United States

**TIME: Late December**

**LOCATION: Some Place Very Near Who-ville**

There will be no intermission.

## MUSICAL NUMBERS

"The Holly And The Ivy" ..... Who Chorale

"Who Likes Christmas?" ..... Who Family, Grown-up Whos & Little Whos

"I Hate Christmas Eve" ..... The Grinch, Young Max, J.P. Who, Mama Who,  
Grandpa Seth Who, Grandma Who, Cindy-Lou Who,  
Danny Who, Annie Who, Betty Who, Boo Who

"Whatchama-who" ..... The Grinch, Little Whos

"Good King Wenceslas" ..... Who Chorale

"I Hate Christmas Eve" (Reprise) ..... The Grinch

"Last Minute Shopping" ..... J.P. Who, Mama Who, Grandpa Seth Who, Grandma Who,  
Who Family, Who Shoppers & Who Merchants

"You're a Mean One, Mr. Grinch" ..... Young Max, Old Max

"One Of A Kind" ..... The Grinch

"Now's The Time" ..... J.P. Who, Mama Who, Grandma Who, Grandpa Seth Who

"A Never Never Very Merry Christmas" ..... The Grinch, Young Max

"Santa For A Day" ..... Cindy-Lou Who

"Who Likes Christmas?" (Reprise) ..... Who Chorale

"One Of A Kind" (Reprise) ..... The Grinch, Young Max, Cindy-Lou Who

"Deck The Halls" ..... Old Max, Little Whos, Audience

Finale ..... The Grinch, Cindy-Lou Who & Whos Everywhere

## WHO-CHESTRA

Conductor .....Lisa LeMay

Violin ..... Anna Rose

Violin ..... Alyze Dreiling-Hammer

Cello ..... Lorie Kirkell

Bass ..... Ted Hughart

Percussion ..... John Szanto

Flute/Clarinet ..... Gary Scott

Clarinet & Tenor Sax.....John Rekevics

Synthesizer.....Ron Councill

Orchestra musicians are members of the American Federation of Musicians of the United States and Canada.

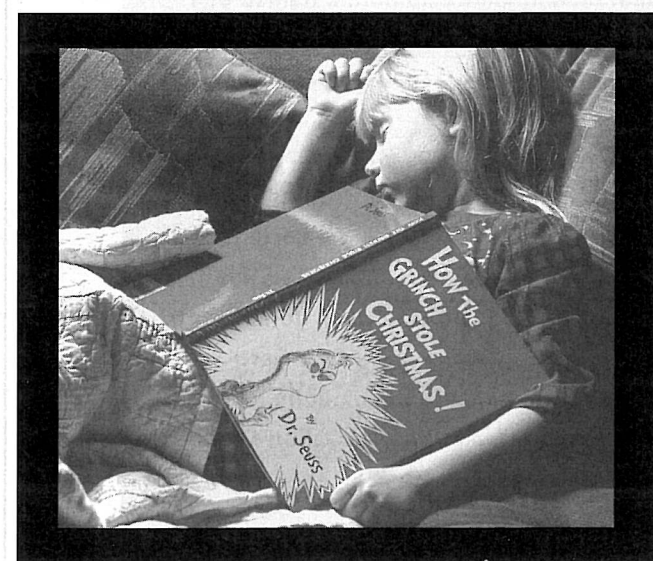
# DIRECTOR'S NOTES

There's really no point in telling you much about *How the Grinch Stole Christmas!*, since you are about to see for yourself. If this is your very first time in a theatre, I can only say that I envy you the next 80 or so minutes, and rest assured that we're going to do our very best to make sure you never forget this moment, and that you continue to come back for the rest of your life.

If this is your zillionth time in the theater, you know how futile these program notes can be. If I have to "explain" anything, I probably shouldn't have tried to put it on stage in the first place, right? So we can get right past that one, as well.

No, what I wish to share with you in the brief moments before the house lights go down, is an appreciation for a very special kind of genius. The kind of genius that uses words in such an enchanting way as to make us — whether we are children or adults — want to read them! Actually want to read!

No need to talk about philosophy: there's plenty of it tucked away in the work of Dr. Seuss, and there will be ample opportunities for discovery in the delicious musical just ahead. But it's not just that Dr. Seuss had something to write about — it's the way he chose to write it. Words that are fun to see. Words that are fun to say. Words that must be repeated out loud, over and over, and yet, words that never tire our ears, no matter how many generations continue to repeat them.



**Every Who  
Down in Who-ville  
Liked Christmas a lot ...  
  
But the Grinch,  
Who lived just north of Who-ville,  
Did NOT!**

Made up words. Inverted words. Silly words. Solemn words. Musical words. Percussive words. Words that float like feathers, that loop like birds, that squiggle like gerbils, that splat like tubas.

What an imagination he had! What a thrilling, unmistakable, unique, fabulous imagination. And that he chose to share it with us, while we're young — well, that's the most amazing thing of all!

He made, in the Grinch, a fantabulous creature, one that is destined to live forever. Right up there, I believe, with King Lear, and Harpagon, and Oedipus, and Saint Joan. A creature that fascinates, that challenges, that insults, that even "scarifies" us.

And one we take to our hearts, like that other glowing holiday gorgon, Ebenezer Scrooge — and for some of the very same reasons. But in giving this creature to us, Dr. Seuss chose words that have never been put together in a similar way before, nor since. He's a reader's dream. Thank God!

It seems to us here at the Globe we have a great deal to be thankful for this holiday season. We are all here, together for the holidays, together with our real and chosen families. That's quite enough of a gift; but there in the same stocking, is someone called Dr. Seuss. And that, just possibly, is the very best present of all.

— Jack O'Brien

## Alex Apostolidis (Grown-up Who Ensemble)



THE OLD GLOBE: Dr. Seuss' *How the Grinch Stole Christmas!* ('98-'03). ELSEWHERE: Alex's credits include *Lend Me a Tenor*, Bellevue Civic Theatre; *Send in the Clones*, Golden Fish Theatre;

*Sweeney Todd*, Fritz Theatre; *Arcadia*, NCRT; *Hair*, the Lyceum and Diversionary Theatres; *The Moonshot Tape*, Lyceum Late Night; *Alabama Rain*, Riverside Theatre Company; *Do You Want to Play Baseball?*, (Director), Mae West Fest. FILM: *Plan of Attack*, *Mr. Jones*. TV: *The Chronicle*.

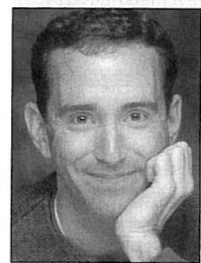
## Eileen Bowman (Grandma Who)



THE OLD GLOBE: Dr. Seuss' *How the Grinch Stole Christmas!* ('98-'03), *The Enchanted*. ELSEWHERE: Eileen's credits include *The Music Man*, *Singin' in the Rain* and *Eliza Doolittle* in *My Fair Lady* at the

San Diego Civic Light Opera. Other credits include *Animal Crackers*, *Reunion*, *Dames At Sea*, and *Snow White* in *Beach Blanket Babylon* at the Sands Hotel in Las Vegas. Film and television credits include several movies of the week as well as *Top Dog*, starring Chuck Norris.

## David Brannen (The Grinch)

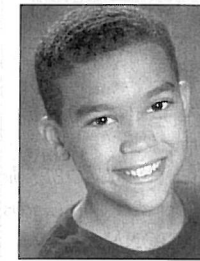


THE OLD GLOBE: Dr. Seuss' *How the Grinch Stole Christmas!* ('00-'03). ELSEWHERE: *Run for Your Wife*, *The All Night Strut*, *Dames at Sea*, Sierra Rep; *Crazy for You*, Fullerton Civic Light Opera; *Big River*, Moon-

light Amphitheatre; *Me and My Girl*, *Showboat*, *A Chorus Line*, Welk Resort Theater; *Singin' in the Rain*, *Fiddler on the Roof*, Starlight Musical Theater; *Lady Be Good*, San Diego Comic Opera;

*Reunion*, Hahn Cosmopolitan Theater; *West Side Story*, Theatre in Old Town; *Joseph...Dreamcoat*, Southwestern JC. TV: *Jack in the Box*, Fisk, FedEx, San Diego Remembers.

## Adam Faison (Danny Who, Red Group)



THE OLD GLOBE: Debut. Adam, age 11, is a 6th-grader at Twin Peaks Middle School in Poway. Adam's past shows include *Joseph...Dreamcoat* (Black Sheep), *Oliver!*

(Mr. Bumble), *Charlotte's Web* (Barnyard Pig), *The Wiz* (The Wiz), *Hansel and Gretel* (The Troll), *The Music Man* (Marcellus Washburn), *The Wizard of Oz* (Junior Ozian), *The Pajama Game* (Sid Sorokin), *Once Upon a Mattress* (Sir Stanley), *Alice, the Musical*, in *Wonderland* (March Hare), *Seussical* (Jojo and Cadet), *A Midsummer Night's Dream* (Cobweb, Francis Flute and Thisby), and most recently, the role of Charlie in *Charlie and the Great Glass Elevator*. He plays the saxophone and oboe, and also enjoys gymnastics and soccer. His favorite Dr. Seuss story is *The Sneetches*.

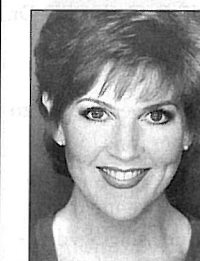
## Danielle Forsgren (Grown-up Who Ensemble)



THE OLD GLOBE: Dr. Seuss' *How the Grinch Stole Christmas!* ('98-'03) ELSEWHERE: Starring in a new TV program called *The Diva Craft Lounge* based on her Diva Craft Lounge store in San Diego's Gaslamp

District. Danielle created the role of Lucy in the musical, *Dracul*, at the San Diego Repertory Theatre's Lyceum. Other leads include: Guest Star and Featured Entertainer, *Emmy Awards*; the British National Tour of *Side by Side by Sondheim* and Eva Perone in *Evita*; plus numerous operatic leads. She proudly holds the Metropolitan Opera National Council's Saunderson Award and a first place San Diego Classical Soloist medal. Ms. Forsgren is the owner of ScrapbookDiva.com and Tiara.com.

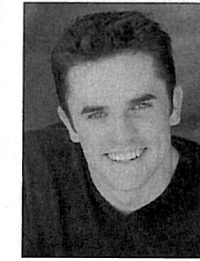
## Melinda Gilb (Mama Who)



THE OLD GLOBE: Dr. Seuss' *How the Grinch Stole Christmas!* ('98-'01, '03) and *Suds*, which she co-wrote and starred in. BROADWAY: *Singin' in the Rain* (original cast). OFF-BROADWAY: *Suds*,

*Back to Bacharach and David*, the first national tour of Joseph Papp's *The Pirates of Penzance*. REGIONAL: *Sweeney Todd* (Mrs. Lovett), *Starlight* and *The Fritz Theatre*; *Working Always Patsy Cline*, *Six Women with Brain Death* and numerous productions of *A Christmas Carol*, San Diego Rep; *American Rhythm*, Lamb's Players Theatre; *Melinda and Steve Show* (with Steve Gunderson), Theatre in Old Town. TV: Two seasons of *The Full Wax* with Mo Gaffney for BBC-1, TV-411 for KPBS and guest star on *Becker* with Ted Danson. Melinda's favorite role is that of "Mama" to her 20 month-old son Knight.

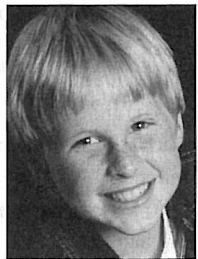
## Corey Greenan (Grown-up Who Ensemble)



THE OLD GLOBE: Debut. TOUR: *Suds*; *Evita* (Che), Taiwan '01. REGIONAL: *Anything Goes* (Billy Crocker), Gainesville Theatre Alliance, GA; *42nd Street* (Billy Lawlor), Mill Mountain Theatre, VA;

*Damn Yankees* (Joe Hardy), Downey Civic Light Opera; *Sweeney Todd* (Tobias Ragg), Performance Riverside; *Mame* (Older Patrick), Cabrillo Music Theatre; *She Loves Me*, *They're Playing Our Song*, REPRISE!

## Corey Hable (Danny Who, White Group)



THE OLD GLOBE: Dr. Seuss' *How the Grinch Stole Christmas!* ('03). Corey is very excited to be appearing for the second year in *Grinch*. His varied interests include singing, dancing, gymnastics, and

designing roller coasters. Favorite roles include Linus in *Charlie Brown*, Tiny Tim in *A Christmas Carol*, and Wacky the tap dancing dummy in *Annie* (for which he won a Sparkplug award). His favorite Dr. Seuss book is, of course, *How the Grinch Stole Christmas!*

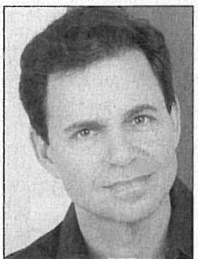
## Caroline Hyatt (Betty Who, Red Group)



THE OLD GLOBE: Dr. Seuss' *How the Grinch Stole Christmas!* ('03). ELSEWHERE: *The Music Man*, Starlight Musical Theatre; *Oliver!* (Dodger), Joan B. Kroc Theatre; *Les Misérables*, *Li'l Abner*, *The Wizard of*

*Oz*, *Annie*, Summer Youth Theatre. Caroline is a fourth-grader who loves to draw as well as sing, dance and act.

## Phil Johnson (Grandpa Seth Who)



THE OLD GLOBE: Dr. Seuss' *How the Grinch Stole Christmas!* ('03). BROADWAY: *Les Misérables*. NATIONAL TOUR: *Sunset Boulevard* (Canada), *Les Misérables*, *Miss Saigon*.

REGIONAL: *Wind in the Willows*, South Coast Rep; *Pageant*, North Coast Rep; *Say Cheese*, Actors Art Theatre (Backstage West/Drama-Logue); *True West*, *Lounge Stories*, Sledgehammer Theatre; *Forever Plaid*, Theatre in Old Town; *American Rhythm*, Lamb's Players Theatre; *Possible Worlds*, Strasberg Institute; *Hula Hoop*, Milwaukee Rep; *She Loves Me*, Skylight Opera

Theatre. Mr. Johnson has performed in several original solo plays in LA and San Diego, including *Say Cheese*, *Act of Folly*, *Lounge Stories*, *Needless People*, standup and cabaret work, and will be performing regularly with LA's Acme Comedy Theatre, and was a Fellow at the Eugene O'Neill Theater Center Cabaret Symposium. He recently released a musical CD, *SmartAleck*.

## Ron Christopher Jones\* (Grown-up Who Ensemble)



THE OLD GLOBE: *The King of the Kosher Grocers*. REGIONAL: *My One and Only*, *Mr. Magix*, Downey CLO and Starlight; *Man of La Mancha*, SBCLO; *Play On!*, Pasadena Playhouse; *The All Night*

*Strut*, West Coast Tour. TV: *The Jamie Kennedy Experiment*, *Surrender Dorothy*, starring Diane Keaton, due out next spring. EDUCATION: Mr Jones received a BFA in Acting from the United States International University. Ron married his "One and Only" in September: Stephanie Deppensmith. He is a member of the Musical Theatre Guild.

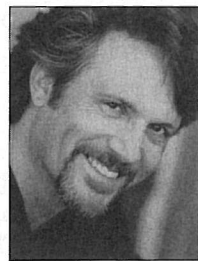
## Steven Jones (Teen Who, White Group)



THE OLD GLOBE: Dr. Seuss' *How the Grinch Stole Christmas!* ('03). Steven's most recent performance was in the San Diego Junior Theater's 2004 production of *The Sound of Music* as Kurt Von

Trapp. Steven has also performed with the San Diego Lyric Opera in *Oliver!* and toured Europe with the San Diego Choral Arts Ensemble in 2003. Additional credits include CYT and the San Diego Children's Choir.

## Ken Land\* (Old Max)



THE OLD GLOBE: Debut. BROADWAY: *The Scarlet Pimpernel* (all three versions), *Victor/Victoria*. OFF-BROADWAY: *The Gig*, Manhattan Theatre Club; *Little Shop of Horrors*, Orpheum Theatre;

*The Death of Von Richthofen...*, Public Theatre. NATIONAL TOUR: *Sweet Charity* (dir. Bob Fosse), *The Scarlet Pimpernel*, *Little Shop of Horrors* (dir. Howard Ashman), *The Secret Garden*, *Evita* (dir. Harold Prince). REGIONAL: *Romeo and Juliet*, Goodspeed; *I'm Not Rappaport*, *The Sunshine Boys*, Birmingham Theatre; *Guys and Dolls*, Indiana Rep. FILM/TV: *Home Again*, *44 Minutes: A Shootout in North Hollywood*, *Six Feet Under*, *Law & Order*, *Malcolm in the Middle*, *Law & Order: SVU*, *Strong Medicine*, *Judging Amy*, *The District*, *One on One*, *Star Trek Voyager*, *Crossing Jordan*.

## Ari Lerner (Boo Who, Red Group)



THE OLD GLOBE: Dr. Seuss' *How the Grinch Stole Christmas!* ('03). REGIONAL: *A Christmas Carol* (Tiny Tim, '01-'02), *Mendel, Inc.*, San Diego Rep. ELSEWHERE: *One for the Road*, Lamb's Players

Theatre; *The Music Man* (Winthrop), *The Scarlet Pimpernel*, *Fiddler on the Roof*, *The Wizard of Oz*, Starlight Musical Theatre. Ari has performed on NBC, CBS, Fox and KUSI news shows. He also has film and voice-over credits. Ari's favorite Dr. Seuss book is *Horton Hatches the Egg*.

## Anita Deshea Lewis (Annie Who, White Group)



THE OLD GLOBE: Dr. Seuss' *How the Grinch Stole Christmas!* ('03). ELSEWHERE: *Annie* (Tessie), *Friday Night Fever* (singer), *The North Star* (Frog), *Charlie and the Chocolate*

*Factory* (Mrs. Beauregarde), *Music Man Jr.* (Zanetta Shinn), *That's Dancing* (singer, dancer), Valencia Park School of Drama & Dance. In February 2005 she will be starring as Alice in *Alice in Wonderland* at Valencia Park Elementary. Anita began her career at age 3, with her angelic voice. Anita loves to sing and act, and her outgoing personality can be seen in her smile. God has blessed Anita with many extraordinary talents. This is only the beginning for Anita, she will continue to share her talent for many years to come. Her favorite Dr. Seuss book is *Go, Dog Go*.

## Joe Metcalf (Boo Who, White Group)



THE OLD GLOBE: Debut. OTHER CREDITS: *Seussical* (Jojo), J\* Company; *The Music Man*, Starlight; *Oliver!* (Oliver), Christian Youth Theater. Joe's favorite Dr. Seuss book is *Go, Dog, Go!*

## Joy Newbegin (Betty Who, White Group)



THE OLD GLOBE: Dr. Seuss' *How the Grinch Stole Christmas!* ('00-'03). ELSEWHERE: vocals in *La Bohème*, *Hansel and Gretel*, San Diego Opera; *Annie*, *The Wizard of Oz*, Starlight Theatre; *Traditions of*

*Christmas* (soloist), *Annie* (Molly), CCT; *You're a Good Man, Charlie Brown*, L.J.S.C.; *Oliver!* (Oliver), *Fiddler on the Roof* (Chava), FAME; National Anthem at the Del Mar Fair, soloist at various venues. When not on stage Joy loves dancing at Touch of Class in El Cajon, where

she most recently returned from Showstoppers National Finals with many high point honors. A freshman at West Hills High School, Joy enjoys health occupations and biology lab. Her favorite Dr. Seuss story is *What was I Scared of?*

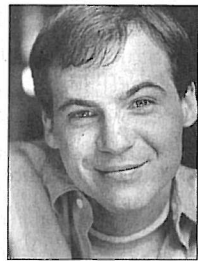
## Warren G. Nolan, Jr. (Grown-up Who Ensemble)



THE OLD GLOBE: Dr. Seuss' *How the Grinch Stole Christmas!* ('03). REGIONAL: *Avenue X*, San Diego Rep; *POP Tour* 2003, La Jolla Playhouse. ELSEWHERE: *Tambourines to*

*Glory*, *Lift Every Voice*, Common Ground Theatre; *Medea*, *Queen of Colchester*, Sledgehammer Theatre; *Falsettos*, Diversionary Theatre; *Festival of Christmas*, Lamb's Players Theatre; *Songs for a New World*, Actors Asylum; *Ragtime*, Moonlight Amphitheatre; *Pageant*, North Coast Rep; *Black Voices*, *Gospel of Colonus*, *Before it Hits Home*, Teatro Máscara Mágica; *And the Dish Ran Away With the Spoon*, *Antigone*, Grossmont College.

## Rusty Ross (Young Max)



THE OLD GLOBE: Dr. Seuss' *How the Grinch Stole Christmas!* ('98-'03). NEW YORK: Robert Wilson's *Alice*, Brooklyn Academy of Music; world premiere of N. Richard Nash's *The Loss of D-Natural*, Lab

Theatre; *Checkmate*, School of Visual Arts; *The Haircut*, Oasis Theatre. REGIONAL: *The Cripple of Inishmaan* and *Proposals*, Depot Theatre; *Blind Date*, Horton by the Stream; *Crimes of the Heart* and *Adventures of Huckleberry Finn*, Totem Pole Playhouse; *Six Degrees of Separation*, Weston Playhouse; *You're a Good Man, Charlie Brown* (guest artist), East Carolina University; *Romeo and Juliet*, Count Basie Theatre; *Big River*, Allenberry Playhouse. FILM: *Sleepy Hollow*, *Clown Karma*. TRAINING: Northwestern University.

## Keilani Joy Spahn (Cindy-Lou Who, Red Group)



THE OLD GLOBE: Debut. OTHER CREDITS: *Oliver!*, *School House Rock*, Joan B. Kroc Theatre; Gift of Dance School & Company, Ballet Folklorico division; local venues include: Old Town, Del

Mar Fair, S.D. County Sheriff's Dept., RSVP, and many other civic events. Keilani's favorite Dr. Seuss book is *Oh, the Places You'll Go!*

## Anna Strickland (Annie Who, Red Group)



THE OLD GLOBE: Dr. Seuss' *How the Grinch Stole Christmas!* ('03). ELSEWHERE: *Alice in Wonderland*, CYT; *Traditions of Christmas* ('01-'02) for CCT. Anna placed first in "Song and Dance" at

the Broadway Magic Talent Competition 2004. She has also received first place awards at the Spotlight Dance Competition and Showstoppers American Dance Competition. Anna is a 5th-grader at Faith Community School where she was the student body secretary last year. Her favorite Dr. Seuss book is *There's a Wocket in my Pocket*.

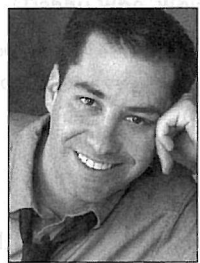
## Shawn Moriah Sullivan (Cindy-Lou Who, White Group)



THE OLD GLOBE: Dr. Seuss' *How the Grinch Stole Christmas!* ('03). ELSEWHERE: Featured performer in the Make-A-Wish Fundraiser. Shawn currently appears in various music videos and film

projects. Shawn is a bilingual student at Valley Center's Lilac School. Her favorite Dr. Seuss book is *One Fish, Two Fish*.

## James Vasquez (Papa Who/Dance Captain)



THE OLD GLOBE: Dr. Seuss' *How the Grinch Stole Christmas* ('03), *If the Shoe Fits*, *The Boiler Room*. OFF-BROADWAY: New York Shakespeare Festival. REGIONAL: Alabama Shakespeare Festival,

Bristol Valley Theatre. ELSEWHERE: recent local credits include *Pageant*, North Coast Rep; *Shear Madness*, Theatre in Old Town. FILM: Mr. Vasquez is currently in post-production on his first feature film which he wrote and starred in. EDUCATION: James is a graduate of the Juilliard School of Drama.

## Jessa Watson (Grown-up Who Ensemble)



THE OLD GLOBE: Dr. Seuss' *How the Grinch Stole Christmas!* ('03). NATIONAL TOUR: *Suds*, the Rockin' 60s Musical Soap Opera. REGIONAL: *Cabaret*, *A Christmas Carol*, San Diego Rep. OTHER

CREDITS: *Richard III*, *Furious Blood*, *Sweet Charity*, Sledgehammer Theatre; *The Importance of Being Earnest*, *Travesties*, *Fuddy Meers*, *As Bees in Honey Drown*, North Coast Rep.

## Charlotte Mary Wen (Teen Who, Red Group)



THE OLD GLOBE: Dr. Seuss' *How the Grinch Stole Christmas!* ('99-'03), Broadway Junior NAMT 2001 presentation. ELSEWHERE: *Annie*, *The Wizard of Oz*, Starlight Musical Theatre; *The King and I*, Peter

Pan, Moonlight Amphitheatre; *Joseph...Dreamcoat*, San Diego Civic Theatre, J\* Company; *Seussical*, *The Sound of Music*, *Miss Nelson is Missing*, *You're a Good Man, Charlie Brown*, *The Magic Mrs. Piggie-Wiggle*, *Pippi Longstocking*, *Charlotte's Web*, San Diego Junior Theatre. OTHER: *Lion King Medley Duet*, San Diego Chamber Orches-

tra; Oregon Bach Festival '03, San Diego Children's Choir. Charlotte is a student at Carmel Valley Middle School and her favorite Dr. Seuss book is *Horton Hears a Who!*

## Halle Hoffman

(Little Who Ensemble, Red Group)

THE OLD GLOBE: Debut. OTHER CREDITS: *Seussical*, J\* Company. *Do You Know Me*, award-winning Video Album by Singer/Songwriter Eve Selis. Aside from acting and voice, she is a talented artist and ballet dancer. Halle's favorite Dr. Seuss books are *Green Eggs and Ham* and *The Cat in the Hat*.

## Sarah Pence

(Little Who Ensemble, White Group)

THE OLD GLOBE: Debut. OTHER CREDITS: Broadway Bound Youth Theater; Metropolitan Educational Theater; *Oliver!*, California Center for the Arts, Escondido; *Annie*, *The Sound of Music*, *Peter Pan*, *Big River*, *Bye Bye Birdie*, *Joseph...Dreamcoat*, Poway Center for Performing Arts; *OZ*, Spreckles Theatre. Sarah is a 5th-grader at Park Village Elementary. She loves to sing, swim, and play. Her favorite Dr. Seuss book is *The Cat in the Hat*.

## Katheryne Penny

(Little Who Ensemble, Red Group)

THE OLD GLOBE: Debut. OTHER CREDITS: *Damn Yankees*, *Fiddler on the Roof*, Starlight Musical Theatre; *Nutcracker* (Clara), The Dance Academy, Bravo San Diego. Katheryne's favorite Dr. Seuss book is *I'm Not Going to Get Up Today*.

## Austin Michael Potts

(Little Who Ensemble, White Group)

THE OLD GLOBE: Debut. OTHER CREDITS: *Crown City Revue*, Lamb's Players Theatre; *You're a Good Man, Charlie Brown*, La Jolla Stage Co.; *Angels Among Us*, 6th & Penn; *Bye, Bye Birdie*, Coronado Playhouse. TV: *Tiger Cruise*, Disney Channel movie. Austin's favorite Dr. Seuss book is *To Think I Saw it on Mulberry Street*.

## Kathleen Sullivan

(Little Who Ensemble, White Group)

THE OLD GLOBE: Dr. Seuss' *How the Grinch Stole Christmas!* ('02-'03). ELSEWHERE: *Alice in Wonderland*, *Annie*, *Charlotte's Web*, *Beauty and the Beast*. Kathleen is a home-schooled 6th-grader from Valley Center. When she is not on the stage, Kathleen is busy training her horses for equestrian events. Her favorite Dr. Seuss book is *Horton Hears a Who*.

## Celia Tedde

(Little Who Ensemble, White Group)

THE OLD GLOBE: Debut. OTHER CREDITS: *Seussical*, J\* Company; Featured child vocalist in Rockola's presentation *The Beatles' White Album Live with Symphony Orchestra*; San Diego Children's Choir. Celia is a 4th-grader at Holmes Elementary. Her favorite Dr. Seuss book is *Oh Say Can You Say* (she likes tongue twisters!).

## Janelle Wen

(Little Who Ensemble, Red Group)

THE OLD GLOBE: Debut. ELSEWHERE: *South Pacific*, Lamb's Players Theatre (Jerome understudy); *Madeline's Rescue*, *Cinderella*, San Diego Junior Theatre; *Annie*, J\* Company. TV: *Red Skies* pilot, child extra. Janelle is a student at Solana Pacific Elementary and her favorite Dr. Seuss book is *The Lorax*.

## Nathan Wetter

(Little Who Ensemble, Red Group)

THE OLD GLOBE: Debut. OTHER CREDITS: *Seussical*, *Alice in Wonderland*, *Once Upon a Matress*, J\* Company. Nathan's favorite Dr. Seuss book is *Horton Hears a Who*.

## Timothy Mason

(Book and Lyrics)

THE OLD GLOBE: Dr. Seuss' *How the Grinch Stole Christmas!*. ELSEWHERE: *Six*, the Guthrie Theatre Lab; *Gold*, (musical with Mel Marvin), the Lyttleton, London; *Cannibals*, *The Naked Eye*, *Chicago*; *Time on Fire*, *The Less than Human Club*, *Ascension Day*, A.C.T.'s Young Conservatory, San Francisco; *The Fiery Furnace* (starring Julie Harris), *Babylon Gardens* (starring Timothy Hutton and Mary-Louise Parker), *Only You*, *Levitiation*, Circle Rep; *Before I Got My Eye Put Out*, South Coast Rep; *Bearclaw*, Seattle Rep; and *In a Northern Landscape*, Actors Theatre of Louisville. Tim has won a Kennedy Center Fund for New American Plays Award, a W. Alton Jones Foundation Grant, a *Drama-Logue* Award and an NEA Writing Fellowship. He is a member of the Dramatists Guild and the Writers Guild of America, East.

## Mel Marvin

(Composer)

THE OLD GLOBE: Dr. Seuss' *How the Grinch Stole Christmas!*, *Tintypes*. ELSEWHERE: Mel's Broadway credits include *Yentl*, *A History of the American Film*, *Tintypes* (Tony Award® nomination), and *Fascinating Rhythm*; he has had nine shows produced off-Broadway. Other credits include scores for many of America's best-known regional theaters, including Lincoln Center Theatre, Arena Stage, The Guthrie, A.R.T., La Jolla Playhouse, Elmer Gantry, The Cherry Orchard, and the Mark Taper Forum, where he was an associate artist and wrote the original music for *Angels in America*. CURRENT PROJECTS: *Guest from the Future*, an opera with libretto by Jonathan Levi, which had its premiere in the Summerscape program at the new Fisher Center for the Arts in July 2004; *Buwalsky*, an opera commissioned by Holland's Opera Spanga, which premiered in The Netherlands in August, 2004 and subsequently toured the U.S., with performances in New Haven and New York City. He is head faculty composer and producing director of the Graduate Musical Theatre Writing Program at NYU's Tisch School of the Arts. *How the Grinch Stole Christmas!* is one of seven family musicals Mel has written for his daughter, Kate, who is now 19 and a sophomore at Vassar College.

## Jack O'Brien

(Director)

Mr. O'Brien's biography may be found on page 27.

## John DeLuca

(Choreographer)

Currently working on the film version of *Memoirs of a Geisha*. Most recent credits include *The Terminal* (Steven Spielberg) and the stage revival of *The Boy Friend* (Julie Andrews). Other film work includes the Academy-Award winning *Chicago* and the 75th annual Academy Awards. BROADWAY: *Minnelli on Minnelli*, *Broadway Sings Elton John* and *Deborah Voight on Broadway*. NEW YORK: *Sweet Adeline*, City Center Encores!; *Two Gentleman of Verona*, New York Shakespeare Festival, Dr. Seuss' *How the Grinch Stole Christmas!*, The Old Globe. NATIONAL: *Chita and All That Jazz*, *Brigadoon*, Andrew Lloyd Weber's *Music of the Night*. REGIONAL: *Oedipus*, *Private Eye*, *Lucky Guy*, *The Gig* (premieres), *Camelot*, *Company*, *Desert Song*, *The King and I*, *She Loves Me*, *Fiddler on the Roof*, *Mame*, *West Side Story*, *Finian's Rainbow*. Also worked with numerous lead performances in many Broadway shows, including Natasha Richardson (*Cabaret*), Donna Murphy (*The King and I*), Rosie O'Donnell (*Seussical*).

## Brendon Fox

(Associate Director)

THE OLD GLOBE: *Sky Girls*, *Much Ado About Nothing*, *Beyond Therapy*, *An Infinite Ache*, *The SantaLand Diaries*, *The Countess*, *Private Eyes*. Mr. Fox is the Associate Director for the Globe. With The Old Globe/University of San Diego Professional Actor Training Program: *Sir Patient Fancy*, *Getting Married*. REGIONAL: *The Pavilion*, *Merrimack Rep*; *Arms and the Man*, Alabama Shakespeare Festival; *Much Ado About Nothing*, LA Shakespeare Festival; *Romeo and Juliet*, *The Floatplane Notebooks*, Cape Fear Regional Theatre. ELSEWHERE: *Twelfth Night*, Academy of Classical Acting, The Shakespeare Theatre, New Village Arts; *Much Ado About Nothing*, Borealis Theatre Co; *Arms and the Man*, *Pericles*, greasy joan & co; *Richard II*, Writers Theatre Chicago; *Heartbreak House*, *Shaw Chicago*; *Don Juan in Hell*, Bailiwick Rep; *Cloud 9*, Diversionary Theatre; *Sir Patient Fancy*, The Juilliard School.

## Phil Reno

(Musical Director)

Phil currently conducts the Broadway production of the smash hit *The Producers*, which won a record twelve Tony Awards® when it opened on Broadway. Also on Broadway, Phil has conducted *Thou Shalt Not* (music/lyrics by Harry Connick, Jr.), the long-running hit *Cats*, and was musical director and on-stage pianist for Dame Edna. Since its inception in 2002, Phil has been the Musical Director and Conductor of the highly successful "Broadway Under the Stars" concerts in Bryant Park, televised by CBS. National tours include *Joseph...Dreamcoat* (starring Donnie Osmond), *Music of the Night* (world premiere tour), *Starlight Express* and Bob Fosse's *Sweet Charity*. Off-Broadway credits include *A New Brain* at Lincoln Center, *Chess*, *The Diva is Dismissed* at the Public, *Nightmare Alley*, and *A Little Night Music*. Phil is a graduate of the Cincinnati College-Conservatory of Music.

## Lisa LeMay

(Associate Musical Director/Conductor)

Internationally, Miss LeMay has been featured in such notable concert halls as the Sydney Opera House, St. Peter's Basilica (Rome), Royal Conservatory (Dublin) and Boston's Symphony Hall. She leads the Locrian Orchestra, which held the honor of providing live music for the International Holiday Dance Classic (Ballroom Dance Competition) at Caesar's Palace in Las Vegas. An accomplished jazz pianist, Miss LeMay has appeared at numerous jazz festivals and has performed with, among others, Dizzy Gillespie, Richie Cole, Maiden Voyage (Ann Patterson), *Tonight Show* Bandleader Tommy Newsome, and Desi Arnaz Jr. She has performed in *The Will Rogers' Follies*, *The Sound of Music*, *The Gershwins' Fascinating Rhythm*, *Joseph...Dreamcoat*, and *Annie* in regional and touring productions. Miss LeMay recently returned from Warsaw, Poland where she was Musical Director for a Broadway style review based in New York. Her solo piano CD, "In a Sentimental Mood," is a collection of jazz standards and received a rave review from *JazzTimes* magazine. As a faculty member at both the University of New Hampshire and the University of Arizona, she has taught courses in music production, music technology, jazz, theory and arranging. She is a voting member of both NARAS (Grammy's), and the Society.



## John Lee Beatty (Scenic Designer)

BROADWAY: *Chicago, Wonderful Town, The Retreat from Moscow, Dinner at Eight, Frankie and Johnny in the Claire de Lune, Morning's at Seven, Proof, Footloose, Ivanov, The Little Foxes, The Last Night of Ballyhoo, A Delicate Balance, The Heiress, Abe Lincoln in Illinois, Anna Christie, Redwood Curtain, The Sisters Rosensweig, The Most Happy Fella, Penn and Teller* (twice), *Burn This, Ain't Misbehavin'* (twice), *Talley's Folly, Fifth of July, Crimes of the Heart, Baby, Whoopee*, among many others. OFF-BROADWAY: *Sylvia, The Destiny of Me, The Substance of Fire, Lips Together, Teeth Apart, The Road to Mecca, Song of Singapore, A Life in Theatre, The Miss Firecracker Contest*, 29 seasons at Manhattan Theatre Club and Circle Rep, 10 seasons at City Center Encores!. Credits also at major regional theatres, and in film, opera and TV. Recipient of the Tony, Obie, Drama Desk, Outer Critics Circle Awards; member of the Theatre Hall of Fame. Graduate of Brown University and the Yale School of Drama.

## Robert Morgan Associate Artist (Costume Designer)

THE OLD GLOBE: Since 1977, designed scenery and/or costumes for 35 productions, among them: *Imaginary Friends, The Full Monty, Dr. Seuss' How the Grinch Stole Christmas!, Bus Stop, Memoir, A Midsummer Night's Dream* ('78 & '85), *Macbeth* ('79 & '96), *Twelfth Night* ('83 & '01), *Romeo and Juliet* ('80 & '99), and *King Lear* ('81 & '93). ELSEWHERE: New York, on and off-Broadway; London's West End; Maria Theresa's private theatre at the Schoenbrunn Palace in Vienna; regional theatres across the United States. From 1987-1992, Mr. Morgan served as Director of the Theatre Division at Boston University's School For the Arts. He lives with his wife and four children in Vermont's rural Northeast Kingdom.

## Pat Collins (Lighting Designer)

THE OLD GLOBE: *Twelfth Night, Cymbeline, Dr. Seuss' How the Grinch Stole Christmas!*. ELSEWHERE: Pat's Broadway credits include *Sight Unseen, Proof, A Moon for the Misbegotten, A Delicate Balance, The Sisters Rosensweig, Conversations with My Father, The Heidi Chronicles, I'm Not Rappaport* (Tony Award), *Execution of Justice* (Drama Desk Award), the original and

1988 revival of *Ain't Misbehavin'*, *Once Upon a Mattress, An American Daughter* and many more. Lincoln Center credits include *Ten Unknowns, Death and the King's Horseman, The Threepenny Opera, The Floating Lightbulb* and *Measure for Measure*. OFF-BROADWAY: *The Foreigner, Doubt, Burn This, Quartermaine's Terms, How I Got That Story* and *A Life in the Theatre*. She has designed lighting at theaters throughout the country, including the Mark Taper Forum, the McCarter Theatre, Berkeley Rep, Seattle Rep, Hartford Stage, Baltimore Center Stage, Long Wharf Theatre, Guthrie Theatre, Goodman Theatre, American Repertory and Actor's Theatre of Louisville. She also designed Wagner's *Ring Cycle* at the Royal Opera House, Covent Garden and over 100 productions for opera companies throughout the world.

## Paul Peterson (Sound Design)

THE OLD GLOBE: *Fiction, Lucky Duck, The Intelligent Design of Jenny Chow, The Food Chain, Two Sisters and a Piano, Resurrection Blues, Bus Stop, Rough Crossing, Blue/Orange, Time Flies, Pentecost, Knowing Cairo, Loves & Hours, Splendour, All My Sons, Faith Healer, Smash, An Infinite Ache, Compleat Female Stage Beauty, Betrayal, The SantaLand Diaries, Dr. Seuss' How the Grinch Stole Christmas!, The Pavilion, Enter the Guardsman, The Boswell Sisters, Vita and Virginia, The Countess, Crumbs from the Table of Joy, Orson's Shadow, God's Man in Texas, Travels with My Aunt*. ELSEWHERE: *The Magic Fire*, Milwaukee Rep; POP Tour (1999, 2000), La Jolla Playhouse; *A Dream Play, Kid Simple, Nu, [sic], A Knife in the Heart, Richard III, The Chairs, Demonology, Alice in Modernland*, Sledgehammer Theatre (Associate Artist); also credits at The Wilma Theatre, L.A. TheatreWorks, San Diego Repertory Theatre, North Coast Rep, Diversionary Theatre, Cape Fear Regional Theatre, Hope Summer Repertory Theatre, Malashock Dance & Company, The University of San Diego, San Diego State University, and the Freud Theatre at UCLA. EDUCATION: BFA in Drama with an emphasis in Technical Design from San Diego State University.

## Leila Knox (Stage Manager)

THE OLD GLOBE: 2004 Summer Shakespeare Festival, *Resurrection Blues, Bus Stop, Much Ado About Nothing, Dirty Blonde*.

BROADWAY: *Dirty Blonde, Amour, One Mo' Time*. REGIONAL: Production Supervisor of the National Tour and West Yorkshire Playhouse productions of *Dirty Blonde; Observe the Sons of Ulster*, Lincoln Center; *Mislansky/Zilinsky* or "schmucks," *Red, The Memory of Water*, Manhattan Theatre Company; *All My Sons, The Mineola Twins*, Roundabout Theatre; *A Madhouse in Goa*, Second Stage; *Twilight, Los Angeles, 1992*, Berkeley Rep; *Alice's Adventures Underground, Cabin Pressure, SITI; Demonology*, Playwright's Horizons; *The Woman Warrior*, Huntington Theatre and Berkeley Rep; 11 seasons with the Williamstown Theatre Festival. EDUCATION: Ms. Knox is a graduate of Northwestern University.

## Duane Daniels (Assistant Director)

Directing credits: *The Adding Machine, Australia, Poor Superman, Reckless, Angel in Between, Muzeeka*, Fritz Theatre; *Hair, Starlight; 1927 Reflection, David and Jill's Brand New Musical, Flares*, LaMaMa (NYC); *Angel in Between, Xtreme Unction*, ATA (NYC). Performing credits: Dr. Seuss' *How the Grinch Stole Christmas!* ('98), The Old Globe; *Red Noses, Cradle Will Rock, A Christmas Carol, Are You Lonesome Tonight*, San Diego Rep; *I Do! I Do!, Sweeney Todd, Conduct of Life, Us, Baltimore Waltz, Dane and Duane - The Only Thing Missing Is U*, Fritz Theatre. *Triple Espresso*, San Diego, Minneapolis, Springfield, St. Louis; *Reunion, The Buddy Holly Story, Fever*, Stage West (Toronto).

## Tracy Skoczelas (Assistant Stage Manager)

THE OLD GLOBE: *Dirty Rotten Scoundrels*, 2004 Summer Shakespeare Festival, *The Food Chain, Two Sisters and a Piano, Bus Stop, Rough Crossing, Much Ado About Nothing, Julius Caesar, Dirty Blonde, Pentecost, Loves & Hours, Oldest Living Confederate Widow Tells All, Splendour, Pericles, All My Sons, Complete Female Stage Beauty, Betrayal, Smash, Memoir, Dr. Seuss' How the Grinch Stole Christmas!* ('01-'03), *Twelfth Night, A Midsummer Night's Dream, Henry V, The Trojan Women*. EDUCATION: Ms. Skoczelas holds a BFA from the University of North Carolina at Greensboro.

The Scenic, Costume, Lighting, and Sound Designers in LORT Theatres are represented by United Scenic Artists Local USA-829, IATSE.

ssdc The Director is a member of the Society of Stage Directors and Choreographers, an independent national labor union.

## FOR THIS PRODUCTION

### Additional Staff

Dance Captain.....James Vasquez  
Assistant Scenic Design.....Amanda Stephens  
Assistant Costume Design.....Shelly Williams  
Assistant Lighting Design.....Chris Rynne  
Studio Teacher.....Judy Ridgeway  
Orchestrations.....Anita Ruth  
Stage Management Intern.....A. Samantha Beckhart

### Understudies

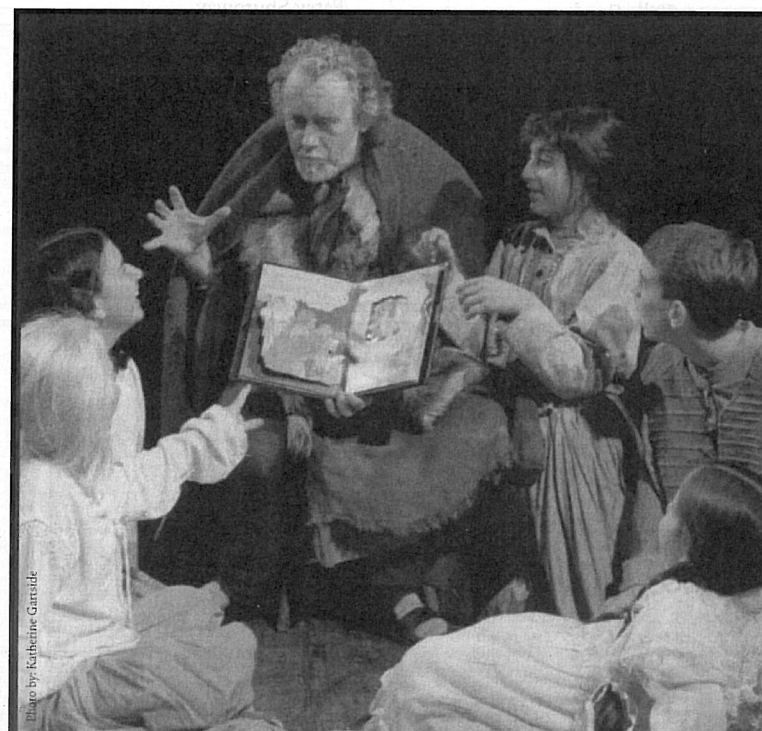
The Grinch.....Phil Johnson  
Old Max.....James Vasquez  
Young Max.....Corey Greenan  
Papa Who.....Ron Christopher Jones  
Mama Who.....Danielle Forsgren  
Grandpa Who.....Corey Greenan  
Grandma Who.....Alex Apostolidis

**DID YOU KNOW?**  
The Old Globe offers 4,000 free GRINCH tickets to underserved children each year, giving many of them their first theatrical experience.

## Little Who Ensemble



**White Group**  
Rear (l-r): Austin Michael Potts, Sarah Pence, Kathleen Sullivan, Celia Tedde  
**Red Group**  
Front (l-r): Janelle Wen, Halle Hoffman, Katheryne Penny, Nathan Wetter



The Old Globe presents  
Teatro Máscara Mágica's  
production of **La Pastorela**

**LA PASTORELA**  
By Max Branscomb  
Directed by William Virchis  
Dec 10 - Dec 23, 2004

This traditional Christmas story is imaginatively reinvented every year, using both English and Spanish. Filled with hilarious jokes and songs, this pageant will delight the whole family.

Prices: Adults \$20, Sen/Mil/Stu \$14  
& Children \$8



**THE OLD GLOBE**

**(619) 23-GLOBE (234-5623)**  
www.TheOldGlobe.org | GROUP SALES: (619) 231-1941 x2408

# 2004 Board of Directors



Thank you for joining us today for this performance of The Old Globe's holiday sensation, *Dr. Seuss' How The Grinch Stole Christmas!* As you watch this wonderful show, please join us in expressing special thanks to "Mrs. Dr. Seuss" herself, Audrey Geisel, for her extraordinary personal gift to the Globe. Her generosity, along with *The San Diego Union-Tribune's* ongoing sponsorship of this classic production, defines for me the true spirit of the holidays. We are ever grateful to them.

The holidays are also a time to express thanks for good things we have enjoyed during the past year. We've been blessed with so many artistic successes this year — from Arthur Miller's residency during *Resurrection Blues*, to the revival of our Shakespeare Repertory Season to the world premiere of *Dirty Rotten Scoundrels*, set to open on Broadway this coming March. Our best wishes to the cast and entire creative team, led by Jack O'Brien, as they bring this hilarious production to New York.

Very few, if any, regional theatres offer this caliber of work, presenting world premiere musicals on their way to New York alongside dynamic new plays by the most sought after playwrights ... and still devote time to the classic plays of Shakespeare, Moliere, Shaw and others. This commitment comes with added expense. Your support is critical to the ongoing success of the Globe, and we are pleased you have joined us today. As you plan your year-end charitable giving, we hope you will also consider investing in the Globe's annual fund, a very real and meaningful way to ensure that the quality of work onstage continues to progress.

Thank you for your support this past year. We wish you and yours a very happy holiday and a bright New Year!

Sheryl White, Chair,  
Board of Directors

## Board of Directors

### OFFICERS

Sheryl White\*  
Chair

Tim K. Zinn\*  
Vice Chair - Finance

Robert H. Gleason\*  
Vice Chair - Development

Carlos D. Malamud\*  
Vice Chair - Nominating

Kathryn Hattox\*  
Secretary

Sally Furay, R.S.C.J.\*  
Treasurer

### DIRECTORS

Mary Beth Adderley

Joseph Benoit

Michael Busselen

Deni S. Carpenter  
Mary N. Clendeninn  
Karen Cohn\*  
Valerie S. Cooper

Jane Cowgill  
Christopher L. Crockett  
Darlene G. Davies

David W. Down  
Bruce M. Dunlap

Sue Ebner  
Bea Epsten\*

Pam Farr  
Victor P. Gálvez  
Lee Goldberg  
Ronald Heller, M.D.

Anne Hoehn  
Viviana Ibañez  
Joseph E. Jessop, Jr.  
Katherine Kennedy  
Stephen M. Krant, M.D.  
Sheila Lipinsky  
Timothy A. MacDonald

Susan Major  
Arthur Neumann  
Robert L. Noble, A.I.A.  
Robin Nordhoff

John Rebelo  
Sandra Redman  
Kelly Sanders

Tom Sayles  
Phyllis Schwartz

Curtis Smith  
Louis G. Spisto\*  
Anne C. Taubman  
Anthony S. Thornley\*

Dean Thorp  
Cherie Halladay Tirschwell  
Evelyn Mack Truitt  
Carol M. Veit  
Patricia Weil  
Julie Meier Wright  
Carolyn Yorston

\*Executive Committee Member

### EMERITUS DIRECTORS

Garet B. Clark  
J. Dallas Clark  
Bernard Lipinsky  
(1914-2001)  
Delza Martin  
Patsy Shumway  
Harvey P. White

### HONORARY DIRECTORS

Mrs. Richard C. Adams  
Clair Burgener  
Mrs. John H. Fox  
(1908-2003)  
Audrey Geisel  
Paul Harter  
Gordon Luce  
Dolly Poet  
Deborah Szekely  
Hon. Pete Wilson



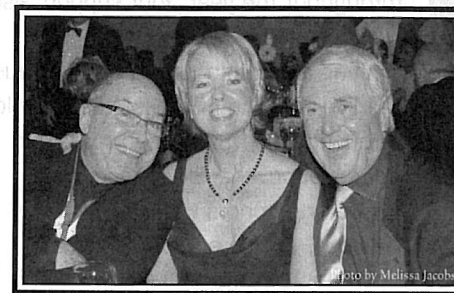
The Old Globe is supported in part by grants from The City of San Diego Commission for Arts and Culture, The Shubert Foundation, The County of San Diego, The National Endowment for the Arts, The San Diego Foundation's Weingart Price Fund, Mandell Weiss Charitable Trust and The San Diego Foundation's Arts & Culture Grants Program.

This theater operates under an agreement between the League of Resident Theatres and Actors' Equity Association, the union of professional actors and stage managers in the United States; and also under an agreement with the Society of Stage Directors and Choreographers (an independent, national labor union), and the International Alliance of Theatrical Stage Employees Local 122.

# Executive Producers - Leadership Gifts

The Executive Producers are a special group of friends who believe that The Old Globe plays an essential role in this community. Each has made a recent leadership gift of \$1,000,000 or greater to significantly enhance The Old Globe today, paving a bright future for the Globe in years to come:

\$5,000,000 or greater



Sheryl and Harvey P. White

\$1,000,000 or greater

Audrey S. Geisel/  
San Diego Foundation Dr. Seuss Fund

Estate of Beatrice P. Lynds

Mr. and Mrs. Victor H. Ottenstein

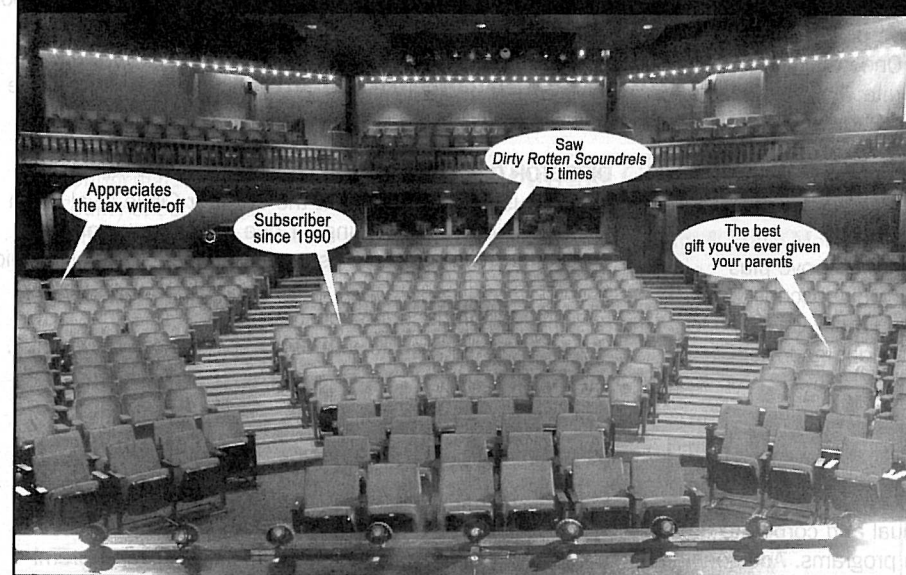
Estate of Dorothy Shorb Prough

Donald and Darlene Shiley

We applaud the leadership and vision of these truly wonderful friends. To learn more about becoming an Executive Producer, please contact Todd Schultz, Director of Development, at (619) 231-1941 x2310.

Listing represents gifts received after January 2000.

## WHOEVER YOU ARE, WHATEVER YOUR REASON...



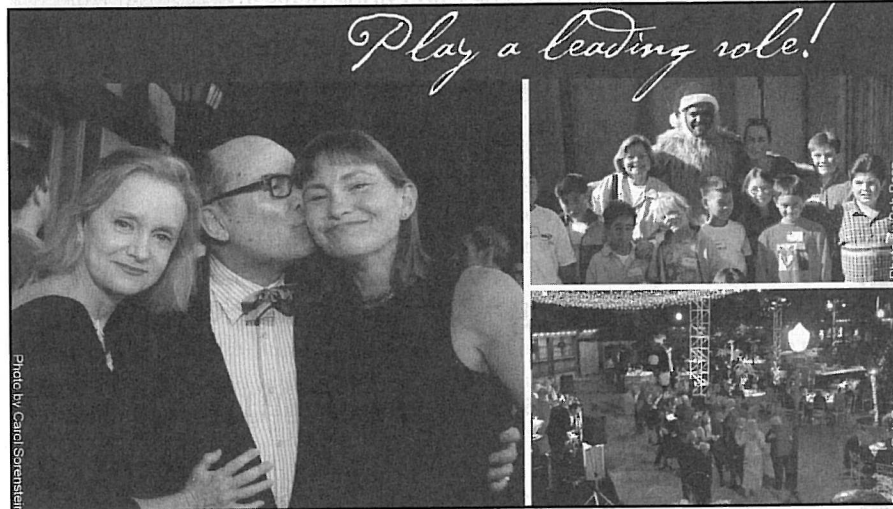
SPONSOR A SEAT TODAY AND HAVE YOUR NAME  
INSCRIBED INTO GLOBE HISTORY!

The Old Globe Theatre now has new seats, thanks to the generosity of many of our community members, bringing your comfort level up to that of Globe performance quality.

Installing these beautiful new seats and carpeting has been a major undertaking, and we hope you will help us defray the costs by naming one or more of the new seats. Sponsor a seat for \$5,000, and we will inscribe your name on a brass arm-rest plaque, as a visible acknowledgment of your leadership in Globe support.

The Old Globe begins the 21st Century with national and international artistic presence like never before. Reserve your place in the history of The Old Globe by calling our Development Office at (619) 231-1941 x2309 today.





Play a leading role at the Tony Award®-winning Old Globe. With ticket sales covering just 50% of the cost of producing each season, tax-deductible gifts by individuals and corporations ensure that the Globe continues to engage and entertain audiences throughout the year. Your support also makes possible the Globe's award-winning education programs that touch the lives of tens of thousands of children throughout the San Diego region. In appreciation, the Globe recognizes supporting donors with the following services, events and benefits:

## Levels of Support:

**CONTRIBUTOR (\$50 to \$249)** >> 10% discount on purchases at the Helen Edison Gift Shop; Subscription discount on American Theatre magazine; Backstage tour and reception; Complimentary admission to Insights Seminars; Invitation to the annual members' meeting; Ticket exchange fee waived.

**BRONZE (\$125 to \$249)** >> All of the above plus priority seating at the Bronze level when you subscribe - *New benefit!*

**SILVER (\$250 to \$499)** >> All of the above plus priority seating at the Silver level when you subscribe. Listing in program magazine for one year; Discounts at participating restaurants for pre- and post-show dining; Service charge waived for all single ticket purchases.

**GOLD (\$500 to \$999)** >> All of the above plus priority seating at the Gold level when you subscribe. One complimentary admission for two to the Lipinsky Family Suite; Two Bard Cards for desserts or beverages at Lady Carolyn's Pub; \$10 gift certificate for purchases at the Gift Shop (no cash exchange value); Complimentary usage of two blankets for Festival productions.

**PLATINUM (\$1,000 to \$1,499)** >> All of the above plus priority seating at the Platinum level when you subscribe. One additional admission for two to the Lipinsky Family Suite; Four additional Bard Cards; One 12- oz. bag of Globe gourmet roasted coffee.

## Production Sponsorships:

**(\$25,000 and above)** >> Many individual and corporate donors at this level choose to direct their support toward sponsorship of productions or specific education programs. Additional benefits for production sponsorships at this level include prominent recognition at The Old Globe, as well as many special VIP privileges.

For more information about supporting The Old Globe at any level, please contact the Development department at (619) 231-1941 x2309.

## The Circle Patrons:

**CRAIG NOEL CIRCLE (\$1,500 to \$2,499)** >> All of the above plus priority seating at the Craig Noel Circle level when you subscribe. Unlimited admission to the Lipinsky Family Suite; Personal VIP ticket service; Four additional Bard Cards; Invitations to all Circle Patron events; Priority upgrades on subscription seating.

**PLAYWRIGHT CIRCLE (\$2,500 to \$4,999)** >> All of the above plus priority seating at the Playwright Circle level when you subscribe. Collector's edition of Shakespeare's works (upon request); Listing on lobby signs in Old Globe Theatre lobby; Listing as a contributor on Globe website (upon request).

**FOUNDER CIRCLE (\$5,000 to \$9,999)** >> All of the above plus priority seating at the Founder Circle level when you subscribe. Complimentary admission for two to a Circle Patron event of your choice; Two additional meals from the Lipinsky Family Suite menu.

**DIRECTOR CIRCLE (\$10,000 to \$24,999)** >> All of the above plus priority seating at the Director Circle level when you subscribe. Valet parking for one performance of each production; Two house seats to a performance of your choice; Access to host a reception or meeting at The Old Globe; Eligibility for production sponsorship in the Cassius Carter Centre Stage (\$15,000 and above; please call for details).

The Old Globe, the flagship of San Diego's performing arts community, maintains a long-standing reputation as one of this country's leading non-profit theatres. The ability to uphold this standard, while keeping ticket prices affordable, is due in large part to the annual financial support of nearly 4,000 individuals, businesses, and foundations. Please join us in giving a warm thanks and recognition to these leaders who have made tonight and many other performances possible. The Old Globe appreciates the support of those who have stepped into the spotlight:

## Benefactors

(\$100,000 and above)

City of San Diego,  
Commission for Arts & Culture  
Audrey S. Geisel/The San Diego  
Foundation Dr. Seuss Fund  
The San Diego Union-Tribune  
The Shubert Foundation

## Season Sponsors

(\$50,000 to \$99,999)

Anonymous (1)  
AT&T  
J. Dallas & Mary H. Clark Fund of  
The San Diego Foundation  
Karen & Donald L. Cohn  
Globe Guilders  
The Lipinsky Family  
Conrad Prebys  
Qualcomm, Inc.  
Sempra Energy  
Donald & Darlene Shiley  
Wells Fargo  
Sheryl & Harvey P. White

## Production Sponsors

(\$25,000 to \$49,999)

Mary Beth Adderley  
American Airlines  
Bank of America  
Mr. & Mrs. William J. Barkett  
John A. Berol  
Break-Away Tours  
California Arts Council  
California Bank & Trust  
Continental Airlines  
County of San Diego  
Kathryn Hattox  
HM Electronics, Inc.  
Joan & Irwin Jacobs  
Mr. & Mrs. Neil Kjos  
Marsh, Inc.  
National Endowment for the Arts  
Northern Trust Bank  
Saks Fifth Avenue  
The San Diego Foundation  
Weingart-Price Fund  
Sheraton San Diego Hotel & Marina  
Target Stores  
Union Bank of California  
Mandell Weiss Charitable Trust  
Stanley E. Willis II

## Director Circle

(\$10,000 to \$24,999)

Anonymous (3)  
Elizabeth M. Adderley  
Alan Benaroya  
The Louis Yager Cantwell  
Private Foundation  
Neil & Mary Clendeninn  
Valerie & Harry Cooper  
Darlene G. Davies  
in memory of Lowell Davies  
Mr. & Mrs. Brian Devine  
Bea & Dr. Robert M. Epsten  
Lee & Frank Goldberg  
Susan & Dr. Ronald Heller  
Dr. & Mrs. Harry F. Hixson, Jr.  
Deni & Jeff Jacobs  
Joseph E. Jessop, Jr.  
Katherine Kennedy/  
Relocation Coordinates  
Sue & John Major  
Paul & Maggie Meyer/  
Latham & Watkins, LLP  
Robert L. Noble, AIA  
Robin & Hank Nordhoff  
Patrons of the Prado  
Patsy & Forrest Shumway  
Anne Taubman & David Boyle  
Cherie Halladay Tirschwell  
Evelyn Mack Truitt  
Carol & Larry Veit  
Patricia & Christopher Weil  
Family Foundation  
Brent V. Woods & Laurie C. Mitchell  
Carolyn W. Yorston  
Ellen & Tim Zinn

## Founder Circle

(\$5,000 to \$9,999)

Lawrence G. Alldredge & Dawn Moore  
Ken & Ginger Baldwin  
Mr. & Mrs. James W. Bastien  
Ken & Deni Carpenter  
Cecilia Carrick & Stan Nadel  
Nina & Robert Doede  
Mrs. Danah H. Fayman  
Jane & Thompson Fetter  
Samuel J. & Katherine French Fund,  
Wells Fargo Trustee  
Mary Ann & Arnold Ginnow  
Robert Gleason & Marc Matys  
Fred & Alicia Hallett  
Ms. Kimberly Heller  
Arthur & Eleanor Herzman

Bob Martinet & Susan Parkin  
Dr. Marianne McDonald  
Money/Arenz Foundation, Inc.  
Arthur & Marilyn Neumann  
Pratt Memorial Fund  
Allison & Robert Price  
Ellen C. Revelle  
Jeannie & Arthur Rivkin  
Nancy & Alan Spector and Family  
Ms. Jeanette Stevens  
Deborah Szekeley  
June E. Yoder

## Playwright Circle

(\$2,500 to \$4,999)

Dr. & Mrs. Wayne Akeson  
Robert S. Albritton  
Mr. & Mrs. Richard Baldwin  
Melissa Garfield Bartell & Michael Bartell  
Charles & Molly Brazell  
Garet & Wendy Clark  
Ms. Heidi Conlan/  
The Sahan Daywi Foundation  
Ann & John Davies  
Bernard J. Eggertsen & Florence Nemkov  
Susanna & Michael Flaster  
Martha & George Gafford  
Mr. & Mrs. Leonard Hirsch  
Melissa & James Hoffmann  
Russell & Mary Johnson  
Dr. & Mrs. Richard L. Kahler  
Bob & Gladys King  
Dr. Ronald & Mrs. Ruth Leonardi  
Peter & Inge Manes  
Drs. Francis & Patricia Montalbano  
Tim & Leslie Paul  
Mrs. Margaret F. Peninger  
Dolly & Jim Poet  
Mr. & Mrs. Matthew Pollack  
Bobbie & Blaine Quick  
Roger & Christine Roberts  
The San Diego Foundation  
Jay & Diane Sweeney  
Dr. & Mrs. Andrew J. Viterbi  
Lewis & Jean Warner  
Jean & Tim Weiss  
Robert Young

## Craig Noel Circle

(\$1,500 to \$2,499)

Mrs. Mary Thomas Adams  
Richard Adesso  
In Memory of Charles R. Allen  
Ms. Gail Andrade  
Anonymous (1)  
Diana Barliant & Nowell Wisch  
Dr. C. K. Barta & Inge Lehman  
Joan & Jeremy Berg  
Teresa & Tom Bernard  
Sally & John Berry  
Pamela F. Billings  
Charles & Charlotte Bird  
Paul Black  
Mary Ann Blair  
Sue Boemer  
Cynthia Bolker & Greg Rizzi  
Nick Bonacker  
William & Janice Bopp  
Robert & Lillie Breitbard Foundation  
BRG Consulting  
Mr. & Mrs. Blaine A. Briggs  
Mrs. Jeanette Burnett  
Dr. & Mrs. Robert M. Callicott  
Ruth Mary Campbell  
Dr. & Mrs. Edgar D. Canada  
Carol & Rudy Cesena  
Carol & Jeff Chang  
The Colwell Family Fund  
R. Patrick & Sharon Connell  
Richard & Stephanie Coutts  
Susan B. Cowell  
Mrs. Willard T. Cudney  
Dr. & Mrs. Francis C. Cushing, Jr.  
Pat & Dan Derbes  
Dean & Mrs. M.H. Dessent  
Mrs. Philip H. Dickinson  
Jim & Sally Ditto  
Marion Eggertsen  
Noddy & Ira Epstein  
Mr. & Mrs. Ronald C. Erbetta  
Bruce & Patricia Fischer  
Dieter & Susan Fischer/  
Dieter's Mercedes Service  
Millicent & Charles Froehlich  
Karen & Orrin Gabsch  
Mrs. Deede Gales  
Elaine & Murray Galinson  
Barbara & Albert Garlinghouse  
Bill & Judy Garrett  
Drs. Thomas H. & Jane D. Gawronski  
Teresa C. George  
Nancy Reed Gibson  
Anne & John Gilchrist  
GM Mortgage Co. Inc.  
Geraldo & Scarrain Gomes  
Bud, Nancy & Rebecca Goodpasture  
Dr. & Mrs. William Gott  
Ms. Cheryl Haimsohn

Norman & Valerie Hapke  
Drs. Patrick Harrison & Eleanor Lynch  
Dr. & Mrs. Peter K. Hellwig  
Rhonda Heth & Thomas Mabie  
Dr. David K. Hostetler  
Gary & Carrie Huckell  
Richard & Janet Hunter  
Wanda & Tom Inasley  
Alfred & Pat JaCoby  
Ronn & Christy Johnson  
William W. Karatz  
Marge & Jerry Katleman  
William & Edythe Kenton  
Mr. & Mrs. Irving J. Kern  
Ken & Sheryl King  
Dr. Fritz Klein  
Dr. Ara & Sosi Klijian  
Phyllis & Martin Kornfeld  
Rosalie Kostanzer  
Bob & Laura Kyle  
Mr. & Mrs. Richard S. Ledford  
Terry & Mary Lehr  
Ms. Sherrill Leist  
James & Pamela Lester  
Kitty Lombardo  
Mr. Robert E. Mackey, Jr.  
R.J. Maus, Architects  
Jeri & Bill McGaw  
Josie Rios McGuffey & A.T. McGuffey  
Elizabeth & Edward McIntyre  
Martha Mary Meade  
Ethel Merriman Realtor  
Estelle & Jim Milch  
Judy & George Miller  
Steve Miller  
Rena Minisi & Rich Paul  
Harle Garth Montgomery  
Judith & Neil Morgan  
Ruth & Jim Mulvaney  
Dr. & Mrs. Alan D. Murray  
Bette Nagelberg  
Charles E. Noell  
Deborah Brooks Pettry  
Marcia & Jim Piper  
Mrs. Gail Powell Davis  
Jim & Claudia Prescott  
RAdm. Arthur & Peggy Price, Jr.  
Brenda Marsh-Rebello & John Rebello  
James S. & Kalpana Rhodes  
Drs. Patrick & Laura Martin Riley  
Nancy Robertson  
Warren & Beverly Sanborn  
Susan & Edward Sanderson  
Margery P. Schneider  
Robert J. Simpson  
Dotti & Joel Sollender  
Gail Squires & Yaman Sencan  
Eugene L. & Hannah Step  
Gwen Stoughton  
Marc R. Tarasuck, AIA  
The Tarlov Family

Mr. & Mrs. Charles Taubman  
Dixie & Ken Unruh  
Carol Vassiliadis  
Doris & Lou Vettese  
Jordine & Harvey Von Wantoch  
Merle & Phil Wahl  
John & Christy Walton  
WD-40 Company  
Shirli Fabri Weiss  
Betty Jo & Hal Williams  
Omar & Carol Winter  
Ms. Julie Meier Wright  
Helene & Allan Ziman  
Allan & Bev Zukor

## Platinum

(\$1,000 to \$1,499)

Anonymous (1)  
Ronda & Stanley Breitbard  
Arthur & Sophie Brody  
Conrad & Christa Burke Fund  
of the San Diego Foundation  
Sandra & Harry Carter  
Grant Culbertson  
Celeste & Steven Cowell  
Sue Ebner  
Sue K. & Charles C. Edwards, M.D.  
Martin & Enid Gleich  
Madeline L. & Milton D. Goldberg  
Family Foundation  
Drs. Leonard & Barbara Gosink  
Sandra Gulden & Leon J. Goldberger  
Gulden Private Foundation  
Alexa Kirkwood Hirsch  
Dr. & Mrs. James E. Lasry  
Pinkee Lauridsen  
Mrs. Thelma Lindblade  
Ms. Jain Malkin  
Mr. Calvin Manning  
Elizabeth & Louis Meyer  
Josiah & Rita Neeper  
Ruth Whitney Robinson  
Ivor & Colette Carson Royston Fund  
Marilies Schoepflin, PhD.  
Miriam Seva  
In Memory of Edward Silverstein  
Takahashi Family Fund of  
The San Diego Foundation  
Celeste & Gene Trepte  
Terry Whitcomb

## Gold

(\$500 to \$999)

Tom Adler & Louise DeCarl Adler Fund  
Charles & Virginia Alexander  
Robert & Elaine Algeo  
Anonymous (6)  
Mike & Rhoda Auer

Mr. & Mrs. David A. Baer  
Ms. Carol L. Baldi  
Drs. Gary & Barbara Blake  
Robert & Nancy Blayney  
Drs. Floyd & Jody Bloom  
Joyce & Robert Blumberg  
Mrs. Suzanne I. Bond  
Ted Bromfield, Esq.  
Stuart & Joanne Butler  
Harry & Carol Cebon  
Doug & Elisabeth Clark  
Jack & Carol Clark  
Mike Conley & Sue Steele  
Steve & Carolyn Conner  
Clif & Jane Cowgill  
Mrs. Gigi Cramer  
Dr. & Mrs. William R. Dito  
Dr. Paul & Kelly Dougherty  
Silvia Dreyfuss/LABS, Inc.  
Mary & David Fitz  
Hal & Pam Fuson  
Arthur & Judy Getis  
The Golemb Family  
Dr. & Mrs. Don Graham  
Pamela L. Graven  
Carol & Don Green  
Mr. & Mrs. Arnold Hess  
Ken & Shirley Hinkley  
Drs. Andrew & Sonia Israel  
Mr. & Mrs. Gary Jacobs  
Dr. & Mrs. James Justeson  
Dr. L. Michael Kettel  
Adrian & Elaine Kuyper  
William Ladd & Anita Busquets  
Paul & Lisa Laikind  
La Jolla Orthodontics  
Dr. Eric Lasley  
Sandy & Arthur Levinson  
Mr. & Mrs. James Lim  
Don & Mary Jane Lincoln  
Barbara & Mathew Loonin  
Dr. & Mrs. Leeland M. Lovaas  
Ed & Nancy Lyon  
Ms. Jo Bobbie MacConnell  
Michael Maggiora/Capri Realty  
Dr. Carl Maguire & Margaret Sheehan  
Dr. Robert & Marcia Malkus  
Christopher J. Maxin &  
Stephanie Buttell-Maxin  
Drs. Betty Joan Maly & John Meyers  
Ron & Mercy Mandelbaum  
Mariotte-Arthur Trust  
Gary & Margaret Mathews  
Jonathon McCue  
Ms. T. McEuen  
Dr. & Mrs. M. Joseph McGreevy  
Mr. & Mrs. George McGregor, III  
Dr. Ronald H. Miller  
Dr. & Mrs. Isaac Mizrahi

Akiko Charlene Morimoto  
James & Nancy Mullen  
T.K. & Debbie Ness  
W. D. Nichols  
Rod & Barbara Orth  
William & Sandra Peavey  
Mr. & Mrs. David J. Pettitt  
Dr. Ken Pischel & Dr. Katherine Ozanich  
Dr. & Mrs. Daniel Porte  
Mr. A.W. Prichard  
Mary & Kedar Pyatt  
Stuart & Linda Robinson  
Mrs. Sara Rosenthal & Julie Prazich  
Dr. H. Warren Ross  
Don & Darlene Russell  
Richard Shapiro & Marsha Janger  
Sheldon & Andrea Shapiro  
Mr. & Mrs. Barry Shelton  
James & Paula Silk  
Dee E. Silver, M.D.  
Mr. & Mrs. Randall Silvia  
Herbert & Elene Solomon  
South San Diego Veterinary Hospital  
Ann & Robert Steiner  
Robert H. Stickel  
Eric Leighton Swenson  
Charles B. Tesar, M.D.  
Will & Vanessa Van Loben Sels  
Natalie C. Venezia & Paul A. Sager  
Kenneth & Lorelei Warburton  
Michael & Penny Wilkes  
Carol & Dennis Wilson  
Keith J. Wong

## Silver

(\$250 to \$499)

Susan Hudson-Abbot & Karl Abbot  
Mr. Gale Acker & Dr. Nancy Acker  
B.J. & Sybil Adelson  
AdventuresinSanDiego.com  
Mark Allen  
George Amerault  
Anonymous (12)  
Antique Row Cafe - Normal Heights  
Drs. Michael & Gabriela Antos  
Alvin B. Asher  
John Randolph Backman, M.D. &  
Carolyn Darrow  
BACTES Imaging Solutions  
Lewis & Lynne Baker  
In Memory of Robert & Nance Banka  
Dr. Vera Barile/Dr. Doug Fischer  
Mrs. Ellen Barnett  
Mrs. Ina S. Bartell  
Richard & Linda Basinger  
Thomas H. Bayless-MFT  
Bill & Sharon Beamer  
Judith Belinsky

Warren & Inez Bellows  
Brad & Melinda Belsheim  
Lee & Amnon Ben-Yehuda  
Edgar & Julie Berner  
Lanie & Lazare F. Bernhard  
Douglas & Dawn Bertozzi  
John Biggs  
Perry S. Binder, M.D.  
Richard & Marcia Binkert  
Mr. & Mrs. Stanley Birstein  
Dennis & Michele Black  
Robert D. Blanton & Ann Clark  
Ms. Sheila M. Bobenhouse &  
Mr. Jeffrey C. Truesdell  
Dr. James Lewis Bowers  
Robert & Yvonne Boyer  
Todd & Margaret Bradley  
Mr. & Mrs. Ronald Brady  
Mrs. Henri Brandais  
Steve & Kristen Briggs  
Ronald & Dorothy Brown  
Mr. & Mrs. G. Stuart Bruder  
Bob Buchner/Marie Buckley  
Clint & Susie Burdett  
Linda Burgum-Sunkel  
David Burns & Diane Lischio  
John & Kirk Butler  
Beth & Tim Cann  
C.E. & Iris Carlson  
Jane Carrigan  
Luc Cayet  
Chateau du Meow  
Charlene Chatham & Wm. Price  
Dr. & Mrs. Alberto Chavira  
Summer & Jeffrey Chiow  
Choice 2000  
Elaine & Peter Chortek  
Mr. & Mrs. Henry B. Clark, Jr.  
Alan L. & Frances E. Cornell  
William & Patricia Cory  
Drs. Stanley & Rosanne Crooke  
James & Kristen Dalessio  
Dewey & Cindy Dasher  
John Wm. Davis & William M. Hughes  
Mr. & Mrs. William Deatrack  
Mr. & Mrs. Alex DeBakcsy  
Ms. Pauline des Granges  
Capt. & Mrs. J. King Deutsch, USN Ret.  
Victor & Evelyn Dhillon  
Don & Frances Diehl  
Digitalpro, Inc.  
In Memory of Edith Dolnick  
Dr. & Mrs. Donald B. Dose  
Bob & Lorrie Dunn  
Judge & Mrs. Harry Elias  
Peggy Elliott  
Dr. & Mrs. Larry I. Emdur  
Barbara & Dick Enberg  
Kurt & Stephanie Erlbeck

# Annual Fund Donors

Diane Espinosa  
Law Offices of David Estes  
Mr. Jesse Fadick  
Donald & Patricia Falkner  
Christie S. Featherstone  
Dr. Susan Fee  
Richard & Donna Ferrier  
Mark & Kim Filanc  
Drs. Lawrence & Irene Fine  
Beatrice Flannagan  
Frank B. Flint, M.D.  
Dr. Ruth M. Forbis  
Larry & Jan Ford  
Dr. & Mrs. Paul Friedman  
Dr. Richard & Randee Friedman  
Ms. Pat Frost  
Dr. & Mrs. Frederick A. Frye  
Charles & Jeanne Gahagan  
Thomas & Robyn Geantil  
Paul Gerard  
Norman L. & Patricia M. Gillespie  
The Glaser Family  
Dr. & Mrs. Michael Goldbaum  
Jeff & Sarah Goldis  
Marilyn & Mel Goldzband  
Deni D. Goodman  
Louise & Doug Goodman  
Robert & Edry Goot  
Mark, Susan & JJ Gottschalk  
Ms. Euvoughn L. Greenan  
Howard & Andrea Greenberg  
Greene Music  
Jodi S. Greene  
Jack & Kim Gruzca  
Mr. George Guerra  
Dr. A.T. Hagler & Ms. Martha Obermeier  
Robert W. & Helen M. Hammond  
Robert M. & Helen M. Hansen  
Jay & Mary Hanson  
Mr. & Mrs. James Harris  
Alex & Mary Hart  
Thomas G. & Linda F. Hawkins  
Michele Hearn, Inc.  
Lynne & Stephen Heidel  
Dr. & Mrs. Charles Henkelmann  
Thomas M. Henry  
Dr. Nilo & Tina Herrera and the Girls  
Mr. & Mrs. Dean M. Herrick  
Suzanne & Lawrence Hess  
Donald J. Hickey  
Justin Higgs  
Mr. & Mrs. Thomas O. Hippie  
Bruce & Jennifer Hirsch  
Mark & Lynn Hofflund  
Paul & Anne Hofflund  
John & Peggy Holl  
Peter D. & Terry U. Holt  
Jean E. Holtz  
Paul & Barbara Holz  
Mr. & Mrs. William G. Homeyer

Mrs. Elsie M. Hooper  
Bonnie & Cecil Hornbeck  
Kendyl & Merri Houdyshell  
Bettina J. Huber  
Human Resources Professional Group  
Stephanie & Carl Hurst  
Noreen Ibrahim  
Mr. & Mrs. Joseph Innecken  
Susan D. Inot  
Mr. & Mrs. David Ives  
Brian Jackson  
Mike & Paula Jantz  
Richard & Katherine Jarvis  
Jerry & Patricia Jerome  
Kenneth & Marilyn Jones  
Sharon Jones  
Judge Anthony C. & Joyce Joseph  
Ms. Maritza Kater  
Miriam & Jerome Katzin  
Drs. Irvin & Nancy Kaufman  
Katherine Kaufman  
Patricia & Alexander Kelley  
Charles & Gail Kendall  
Joanna & Lloyd Kendall  
Ardyth D. Kennedy  
Kathleen Kim & Zachary Rattner  
Mark & Kelly Kjos  
Louis J. Knobbe  
Jo Ann & Lee Knutson  
Curt & Nancy Koch  
Bill & Linda Kolb  
Leona & Larry Krevat  
Marvin Krichman & Franci Starr  
Marvin Kripps, M.D.  
John S. Kyle Esq. & Sharon M. Kyle  
John Q. Lalas, Jr.  
Janet & Dan La Marche  
Victor Landa  
Dr. Janet Lapp  
Ed & Betty Law  
Dixon & Pat Lee  
Emily L. Lee  
Jim & Veronica Lee  
Tom & Terry Lewis  
Donald C. Lipkis & Arlene Pollard  
Stan & Susan Loft  
Mark C. Lorenzo  
Sally & Bill Luster  
Dr. David Lynn  
Jerry & Beverly Lynn  
Brian C. Malk & Nancy Heitel  
Judge & Mrs. Frederick Mandabach  
Cathie Marsh  
Harold & Beverly Martyn  
Susan B. Mason  
Mary Matava  
Cdr. & Mrs. John C. Mathews III  
Mr. Simon J. Mayeski  
David & Susan McColl  
Valli & Tom McDougle  
Drs. Richard & Doreen McLaughlin

Dan McLeod  
Harold O. McNeil, Esq.  
L.M. & Marcia McQuern  
Schuyler & Saskia Melby  
Joyce & Bill Mellos  
Dr. & Mrs. Robert Meredith  
James & Dorothy Mildice  
Millman Family  
Stan & Phyllis Minick  
Mr. & Mrs. David Mongan  
Mark Morel  
Carole Morrison  
Jessica M. Morrow  
Dr. & Mrs. James H. Nelson  
Tom & Doris Neuman  
Stephen B. Nielander & Dominique K. Alessio  
Charlotte W. Nielsen  
Gary & Gail Nordstrom  
Patricia O'Connor  
Mr. Virgil L. Ogle, Jr.  
Mr. & Mrs. John Oliver  
Dr. & Mrs. David R. Ostrander  
Ike & Victoria Owens  
Carol Pagliuso  
Lee & Newt Paletz  
Susan C. Parker  
Mr. & Mrs. Jean-Louis Paroz  
Clifford T. Pentrack & Mary E. Giovaniello  
Marion D. Perlman  
Drs. Mark & Darcey Perlman  
Anthony Perricone  
Richard & Rosemary Pinney  
James & Nancy Price  
Michael Price  
Barbara Pricola  
Eileen Prisby  
Mr. & Mrs. Merlin Puck  
Dr. Alex & Eileen Pue  
Anne F. Ratner  
Rehab Strategies Inc./Jeanette Barrack  
Mr. H.E. Reichert  
Dr. Richard Reid  
Robert T. Reid  
Mr. & Mrs. Daniel Reisfeld and Family  
John & Mary Rickards  
Andrew Ries, M.D. & Vivian Reznik, M.D.  
Ruth Roberts & John Walsh  
William & Susane Roberts  
Brent & Bev Robinson  
Lois S. Roon  
Ursula R. Roth  
Dr. Norman & Barbara Rozansky  
Frank & Cheryl Ruyak  
Dr. Joseph & Carol Sabatini  
George & Karen Sachs  
Edward & Rae Samiljan  
Barbara A. Sawrey  
Simon & Ruth Sayre

Dr. & Mrs. Roger H. Schmitt  
Stephen & Brenda Schulman  
Linda J. Seifert  
Bud Semon  
Jim & Natalie Service  
Lori Severson & Eric Longstreet  
Ann B. Sheresh  
Drs. Lawrence & Miriam Sherman  
Larry G. Showley  
Sandy & Stella Shvil  
Elizabeth Silver  
Alice & Lewis Silverberg  
Jerry & Beth Silverman  
Eunice M. Simmons, M.D.  
Julia Simms Public Relations  
Anne & Ronald Simon  
Susan Sincoff & Dr. Joseph Yedid  
Christine Skoczek  
Terrence & Kathryn Slavin  
Rodney & Dolores Smith  
Kwan & Marion So  
Mr. & Mrs. Marc Solis  
Dr. & Mrs. Bradley Spitz  
Mr. & Mrs. Fred C. Stalder  
Susan I. Steele  
Deborah & Hilton Stewwedel  
Edward Stickgold & Steven Cande  
Mr. & Mrs. Avery Stone  
Carl L. Strona  
Studio C Architects  
Abbe & David Stutz  
Mr. & Mrs. Ronald Styn

Brendan & Alison Sullivan  
Clifford & Kay Sweet  
Drs. Paul Sylvan & Ellen Heyneman  
Dr. Blake S. & Mrs. Peggy Jean Talbot  
Dr. Terry & Naomi Tanaka  
Dr. Marshall & Leila Taylor  
Steven & Anoush Tencati  
Don Terwilliger  
Betsy & Michael Thomas/  
San Diego Postal Annex +  
Judge & Mrs. David R. Thompson  
Lt. & Mrs. Jack E. Timmons  
Timothy Torske  
Good luck to UCSD  
Cardiovascular Center  
Mr. & Mrs. Stan Ulrich  
Ginny Unanue  
Cyrus & Celeste Vafi  
Jane Venghaus  
The Vigil Family  
Village Nurseries/Jason Dworman  
Hobart & Violet Wagener  
Ann L. Walker  
Kathy & Jim Waring  
Pitt & Virginia Warner  
Shannon M. Watson  
Ms. Virginia Watson  
John & Cathy Weil  
Janice L. Weirick  
Mr. & Mrs. David Weinrieb  
Ms. Margaret Wells  
Mr. & Mrs. James D. Welterlen

Pat & Bob Whalen  
Ross & Barbara White  
Mr. & Mrs. Patrick N. Whitney  
Mark & Ann Wiczorek  
Dr. & Mrs. Roland Wilhelmy  
Darrell Williams  
Cass Witkowski Family  
Mr. & Mrs. John W. Witt  
Dr. Perri L. Wittgrove  
Mr. & Mrs. Scott Wolfe  
Mrs. Philip Wood  
Dr. Dolores Wozniak  
To the World's Greatest Papi/Raleigh  
Mr. & Mrs. C.E. Wylie/  
C.E. Wylie Construction Company  
Alan R. Zeleznikar  
Vicky Zollweg & Michael Dunteman

*This list is current as of October 13, 2004*

To learn more about supporting The Old Globe's artistic excellence and community outreach programs, please visit our website at [www.TheOldGlobe.org](http://www.TheOldGlobe.org) or call (619) 231-1941 x2305.

## Advisory Council Members

Robert S. Albritton  
Mr. Lawrence Alldredge  
Dr. Paul L. Black  
Trish Butler  
Dr. & Mrs. Edgar D. Canada  
Mr. & Mrs. Dallas Clark  
Steven J. Cologne  
R. Patrick & Sharon Connell  
Mrs. Susan B. Cowell  
Pat & Dan Derbes  
Mrs. Philip H. Dickinson  
Mr. & Mrs. Robert W. Doede  
Ms. Marion Eggertsen  
Dr. Bernard Eggertsen & Ms. Florence Nemkov  
Mrs. Danah H. Fayman

Fifth & Hawthorn Restaurant/  
Ed Nickelson & Dave Witt  
Susanna & Michael Flaster  
Mr. & Mrs. Arnold Ginnow  
Mr. & Mrs. Leonard Hirsch  
Mr. & Mrs. Alfred W. JaCoby  
Russell & Mary Johnson  
Mr. & Mrs. Jerry Kadleman  
Mr. & Mrs. J. Robert King  
Ken & Sheryl King  
Dr. Ara & Sosi Klijian  
Phyllis & Martin Kornfeld  
Terry & Mary Lehr  
Ruth & Ron Leonardi  
Peter & Inge Manes  
Bob Martinet & Susan Parkin

Dr. Marianne McDonald  
Paul I. Meyer  
Mr. & Mrs. George Miller  
Mrs. Harle Montgomery  
David & Noreen Mulliken  
Charles Noell  
Mr. & Mrs. Victor H. Ottenstein  
James & Claudia Prescott  
Mr. & Mrs. Blaine Quick  
Mr. & Mrs. Arthur Rivkin  
Mr. & Mrs. Roger Roberts  
Donald & Darlene Shiley  
Ms. Roberta Simpson  
Dorothy & Joel Sollender  
Gail Squires & Yaman Sencan

Ms. Jeanette Stevens  
Dr. & Mrs. Jay Sweeney  
Marc R. Tarasuck, AIA  
Dixie & Ken Unruh  
Mr. & Mrs. Harvey Von Wantoch  
Mr. Lewis L. Warner  
Omar & Carol Winter  
June Yoder  
Mr. & Mrs. Robert D. Young

For more information, please contact Michele Prosser at (619) 231-1941 x2311.

## CORPORATE LEADERS \$25,000 AND ABOVE



### CORPORATE DONORS (\$2,500 to \$24,999)

American Express  
Bertrand at Mister A's  
Classic Party Rentals  
Cush Automotive  
Charitable Foundation  
Deutsche Bank Private Wealth Management  
Evans Hotels  
Fifth & Hawthorn  
Fleishman-Hillard  
FloraStyle

Goldman Ferguson Partners  
Higgs, Fletcher & Mack, LLP  
Home Bank of California  
KPMG, LLP  
Latham & Watkins, LLP  
Mission Federal Credit Union  
Mitchell International, Inc.  
Neiman Marcus  
Nokia  
Pfizer  
Nordstrom  
The Prado at Balboa Park  
Relocation Coordinates

ResMed Foundation  
Science Applications International Corporation  
San Diego National Bank  
SBD Interpreting  
Seltzer Caplan McMahon Vitek  
Showtime  
Skyy Vodka  
Stewart Title of California  
TK&A Custom Catering  
U.S. Bank  
The Westgate Hotel

Corporate Members enjoy exclusive benefits and recognition, especially the opportunity to entertain clients and employees with exclusive receptions in our Patron and Lipinsky Family Suites, behind-the-scenes tours, and preferred seating at our shows. For information, please contact Chris Graham at (619)231-1941, x2308.

**National Corporate Theatre Fund** is a non-profit corporation created to increase and strengthen support from the business community for eleven of this country's most distinguished professional theatres. The following foundations, individuals and corporations support these theatres through their contributions of \$10,000 or more to National Corporate Theatre Fund:

#### Benefactors (\$20,000 & Above)

Altria Group, Inc.  
American Express Company  
Broad Street, Inc.  
Ernst & Young  
KPMG  
Marsh & McLennan Companies, Inc.  
Praxis Media/Palace Production  
Center/Rabbit Ears Entertainment  
Verizon

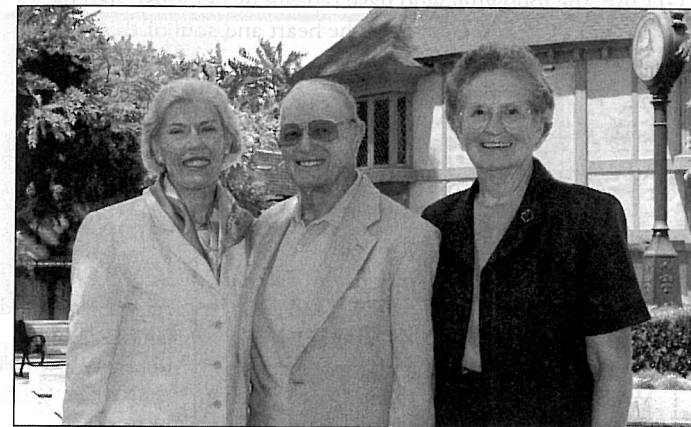
#### Pacesetters (\$15,000 to \$19,999)

Bank of America  
Cisco Systems  
Citigroup  
Dorsey & Whitney LLP  
Estee Lauder Companies, Inc.  
GE Foundation  
Goldman, Sachs & Company  
Merrill Lynch & Co.  
UBS

#### Donors (\$10,000 to \$14,999)

Baruch College  
Credit Suisse First Boston  
Deloitte & Touche  
Mayer, Brown, Rowe & Maw  
Metlife Foundation  
Morgan Stanley  
Pfizer, Inc.  
Sidley Austin Brown and Wood LLP  
Wilke Farr & Gallagher LLP  
Skadden, Arps, Slate, Meagher & Flom LLP

# The Craig Noel League



Craig Noel League Co-chairs Carolyn Yorston (left) and Sally Furay (right) with Artistic Director Craig Noel. Photo: Melissa Jacobs

We hope you'll consider joining the Craig Noel League, the planned giving society of The Old Globe. The time has come to secure the future of the Globe — which has enriched our lives and nourished us for nearly 70 years — so that it will do the same for generations to come. Many thoughtful friends are ensuring The Old Globe's future by leaving gifts in their wills and estate plans to help us in this effort. The League honors today these thoughtful friends whose generosity will sustain the excellence of The Old Globe for generations.

Examples of ways friends are helping include making simple bequests, gifts of life insurance, gifts of real estate, and charitable trusts. For more information, please contact Planned Giving Officer Brad Ballard at (619) 231-1941 x2309 or via e-mail at [plannedgiving@TheOldGlobe.org](mailto:plannedgiving@TheOldGlobe.org). Thank you.

### Craig Noel League Members

#### Securing the future through planned gifts.

Robert S. Albritton  
Nancine Belfiore  
Dr. and Mrs. Edgar D. Canada  
Garet and Wendy Clark  
J. Dallas and Mary H. Clark  
Patricia W. Crigler, Ph.D., CAPT/USN/Ret.  
Patricia and Donn DeMarce  
Mrs. Philip H. Dickinson  
Dr. and Mrs. Robert Epsten  
Frank A. Frye, III  
Robert Gleason and Marc Matys

Marcy Goldstone  
Kathryn Crippen Hattox  
David and Debbie Hawkins  
Craig and Mary Hunter  
Barbara Iredale\*  
Bob Jacobs  
Joseph E. Jessop  
J. Robert and Gladys H. King  
Marilyn Kneeland  
Jean and David Laing  
Jerry Lester Foundation  
Dr. Bernard Lipinsky\*  
Heather Manion  
Calvin Manning  
Paul I. and Margaret W. Meyer  
Judy and George Miller  
Steve Miller  
Dr. Robert W. Miner

Shirley Mulcahy  
Laurie Dale Munday  
Stanley Nadel and Cecilia Carrick  
Arthur and Marilyn Neumann  
Craig Noel  
Greg and Polly Noel  
PACEM (Pacific Academy of Ecclesiastical Music)  
Mrs. Margaret F. Peninger  
Florence Borgeson Plunkert\*  
Dolly and Jim Poet  
Dorothy Shorb Prough\*  
Donald and Darlene Shiley  
B. Sy and Ruth Ann Silver  
Roberta Simpson  
Dolores and Rod Smith  
John and Cindy Sorensen  
Marje Spear

Nancy A. Spector and Alan R. Spector  
Jeanette Stevens  
Eric Leighton Swenson  
Anne C. Taubman  
Cherie Halladay Tirschwell  
Marian Trevor (Mrs. Walter M.)\*  
Evelyn Mack Truitt  
Carol and Lawrence Veit  
Harvey and Jordine Von Wantoch  
Merle and Phil Wahl  
Sheryl and Harvey P. White  
Mrs. Jack Galen Whitney  
Stanley E. Willis II\*  
Julie Meier Wright  
Carolyn Yorston

\*Deceased

### Endowment Gifts

#### Supporting the theatre in perpetuity.

Continued support of The Old Globe's endowment will ensure a financially strong and artistically excellent Globe for tomorrow. Please join us in thanking these very special donors for their far-sighted support of The Old Globe.

Anonymous (2)  
John A. Berol  
Joe A. Callaway\*  
Dr. David & Ava Carmichael  
Maria Carrera  
J. Dallas & Mary H. Clark  
In Memory of Lowell Davies  
Morey & Jeanne Feldman and Family

The Globe Guilders  
Jim & Betty Hempstead  
Hollis Foundation  
Mrs. Anna P. Lord  
Mission Valley Community Foundation  
National Endowment for the Arts  
Stephen Nielander & Dominique Alessio

Mrs. Margaret F. Peninger  
Florence Borgeson Plunkert\*  
Jessie W. Polinsky\*  
Jeannie & Arthur Rivkin  
San Diego Trust and Savings  
Mr. & Mrs. Gene Trepte

\*Deceased

For more information about the Craig Noel League or Endowment Gifts, please contact Brad Ballard at (619) 231-1941 x2309.

In recognition of their unique contribution to the growth of The Old Globe and their special talent, we take great pride and pleasure in acknowledging as ASSOCIATE ARTISTS OF THE OLD GLOBE, the following who have repeatedly demonstrated by their active presence on our stages and in our shops, that wherever else they may work, they remain the heart and soul of this theatre.



Jack O'Brien, Artistic Director



Louis G. Spisto, Executive Director



Craig Noel, Artistic Director

William Anton	Tovah Feldshuh	Mark Harelik	John McLain	Ken Ruta	Deborah Taylor
Jacqueline Brookes	Monique Fowler	Bob James	Jonathan McMurtry	Douglas W. Schmidt	Sada Thompson
Lewis Brown	Ralph Funicello	Tom Lacy	Stephen Metcalfe	Seret Scott	Paxton Whitehead
Kandis Chappell	Lillian Garrett-Groag	Diana Maddox	Robert Morgan	David F. Segal	James R. Winker
George Deloy	Harry Groener	Dakin Matthews	Steve Rankin	Don Sparks	Robert Wojewodski
Tim Donoghue	A.R. Gurney	Deborah May	Marion Ross	David Ogden Stiers	
Richard Easton	Joseph Hardy	Katherine McGrath	Steven Rubin	Conrad Susa	

**PATRON INFORMATION**

**Ticket Services**

**HOURS**  
Monday: noon – 6:00 pm  
Tuesday through Sunday: noon – 8:00 pm  
Hours subject to change. Please call ahead.  
**PHONE** (619) 231-GLOBE or (619) 234-5623  
**FAX** (619) 231-6752  
**EMAIL** Tickets@TheOldGlobe.org

**Administration**

**HOURS**  
Monday – Friday: 9:00 am – 5:00 pm  
**PHONE** (619) 231-1941  
**WEBSITE** www.TheOldGlobe.org  
**ADDRESS** The Old Globe  
P.O. Box 122171  
San Diego, CA 92112-2171

**Ordering Tickets / Change of Address**

The Old Globe accepts Visa, Discover, MasterCard, or American Express. Phone orders are subject to a \$2.50 per ticket service charge, not to exceed \$10. Ticket exchanges are subject to a service charge for non-subscribers. If you have moved, please notify the Ticket Services Office to update our records. Call (619) 234-5623 during business hours or mail your change of address to the Ticket Services Office, or email us at Tickets@TheOldGlobe.org.

**Unable to Attend?**

If you find you are unable to use your tickets, please give them to a friend, or turn them in to the Ticket Services Office and receive a tax receipt for your donation.

**SPEAKERS BUREAU**

As part of The Old Globe's educational outreach to the community, the Theatre offers a Speakers' Bureau program that will provide a speaker for your club, civic, or church group to talk about the Globe's productions and programs, free of charge. The Old Globe engages several knowledgeable docents, who are available year-round to share the institution's fascinating history and exciting information about the current season of plays. Subject to their availability, several key members of the artistic and production team are also available to speak with your group. For more information on docent Speakers' Bureau representatives, please contact Diane Sinor at (619) 231-1941 x2140 or Carol Green at (619) 582-1079. To find out about our artistic and production speakers, please contact Rachel Huber at (619) 231-1941 x2355.

**Restrooms and Telephones**

Restrooms are located in the lower lobby of the Old Globe Theatre and adjacent to the Festival Theatre; pay phones may be found in the lower Globe Theatre lobby and next to the Gift Shop.

**Seating of Latecomers**

Although we understand parking is often at a premium, the seating of latecomers is extremely disruptive. Latecomers may be given alternative seating and will be seated at an appropriate interval.

**Young Children**

Children under the age of three will not be admitted to this performance.

**Electronic Devices and Cameras**

Use of recording devices and cameras is not permitted. If you are wearing a digital watch or pager, or if you are carrying a cellular phone, please silence it prior to entering the theatre.

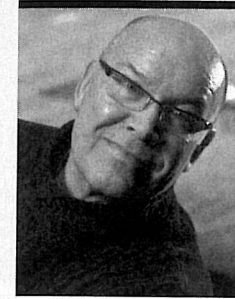
**Sennheiser® Listening System**

For the convenience of the hearing impaired, the Sennheiser® Listening System is available in the Old Globe Theatre. Lightweight headsets may be obtained from the house manager prior to performances, free of charge.

**Public Tours**

Go behind the scenes at The Old Globe to learn about the history, three stages, shop and craft areas. Open tours: most Saturdays and Sundays at 10:30 a.m. Groups by reservation. \$5 adults; \$2 seniors and students. Phone (619) 231-1941 x2142 for information/reservations.

**Ricola Cough Drops are available upon request. Please ask an Usher.**



Jack O'Brien  
Artistic Director

Recent Globe productions include *Dirty Rotten Scoundrels*, *Imaginary Friends*, *Twelfth Night*, *The Full Monty*, *The Seagull*, *The Magic Fire*, Dr. Seuss' *How the Grinch Stole Christmas!*, the world premieres of Associate Artist A.R. Gurney's *Labor Day* and Tina Howe's *Pride's Crossing*, as well as *Time and Again*, *The Doctor Is Out (Getting Away With Murder)* by Stephen Sondheim and George Furth, plus productions of *Henry IV*, *Much Ado About Nothing*, *Oleanna*, *Damn Yankees*, *King Lear*, *Ghosts*, *Hamlet*, *Uncle Vanya*, and world premieres of Terrence McNally's *Up in Saratoga*, A.R. Gurney's *The Snow Ball* and *The Cocktail Hour*, Tom Dulack's *Breaking Legs*, Stephen Metcalfe's *Emily*. ELSEWHERE: *Henry IV* (Tony Award®); *Hairspray* (Tony Award®); *The Invention of Love* (Tony nominations, best director and play), Lincoln Center Theatre; *The Full Monty* (Tony nominations, best director and musical), Eugene O'Neill Theatre; *More to Love*; *Labor Day*, Manhattan Theatre Club; *St. Louis Woman*, City Center Encores!; *Pride's Crossing*, *The Little Foxes*, *Happgood* (Lucille Lortel Award for Direction, 1995), Lincoln Center; *Damn Yankees* (Tony nomination, best musical revival); *Two Shakespearean Actors* (Tony nominations, best director and play) on Broadway; *Porgy and Bess* for Houston Grand Opera and Broadway (Tony Award), as well as Radio City Music Hall; *The Magic Flute*, San Francisco Opera; *Tosca*, Santa Fe Opera; *Così fan Tutte* and *Aida*, Houston Grand Opera; *The Most Happy Fella*, Michigan Opera and Broadway. TV: *An Enemy of the People*, *All My Sons*, *I Never Sang for My Father*, *Painting Churches*, and *The Skin of Our Teeth*, all for PBS's American Playhouse. Recent awards: 2004 Thomas Degaetani Award (USITT), 2002 "Mr. Abbott" Award (SDCF), 2001 Joan Cullman Award for Extraordinary Creativity, 2001 Joe A. Callaway Award (SDCF), the Drama League's Julia Hansen Award for Excellence in Directing, 2001 Member, College of Fellows of the American Theatre; Honorary Doctor of Humane Letters, University of San Diego. Mr. O'Brien a member of the College of Fellows of the American Theatre.



Craig Noel  
Artistic Director

Craig Noel was first appointed director in 1939, directing 15 productions prior to World War II. Since then he has directed more than 220 plays of all styles and periods, and produced more than 365 (over 40 of which were directed by William Roesch from 1961 through 1976). His vision for The Old Globe during the past 65 years has resulted in the establishment of the Shakespeare Festival in the late '40s, the expansion to two theaters in the '50s, Globe Educational Tours in the '70s and Teatro Meta in the '80s. His recent directorial assignments include *The Pavilion*, *Over the River and Through the Woods*, *Scotland Road*, *Springtime for Henry*, *Travels with My Aunt*, *Voir Dire*, *Mister Roberts*, *Time of My Life*, *Wonderful Tennessee*, *Mr. A's Amazing Maze Plays*, *The King of the Kosher Grocers*, *Morning's at Seven*, *The White Rose*, *Shirley Valentine*, *And a Nightingale Sang*, *The School for Scandal*, *The Road to Mecca*, *Love's Labour's Lost*, *The Boiler Room*, *The Night of the Iguana*, and *Intimate Exchanges*. ELSEWHERE: During the 1940s Noel served as dialogue director for 20th Century Fox Studios and was the former director of the Ernie Pyle Theatre, Tokyo. Described by *Variety* as the *eminence grise* of San Diego theatre, Noel is one of the few San Diegans to have an entire year (1987) proclaimed in his honor, and to be named one of San Diego's "Living Treasures." Additional honors include the Governor's Award for the Arts; inclusion in The San Diego Union's list of 25 persons who shaped San Diego; 1985 Outstanding Alumnus of the Year; San Diego Press Club Headliner Award; a combined tribute from the Public Arts Advisory Council and San Diego County Board of Supervisors (1984); Shiley Award for Lifetime Achievement (1999 Parté), Member, College of Fellows of the American Theatre. He is particularly proud of the following two honors representing education and theatre: Honorary Doctor of Humane Letters, University of San Diego and the annual Awards for Excellence in Theatre named in his honor by the San Diego Theatre Critics Circle.



Louis G. Spisto  
Executive Director

Louis G. Spisto was appointed Executive Director of The Old Globe in October 2002. He has over 20 years experience managing some of this country's leading arts organizations, where his track record for fiscal as well as artistic leadership has been highly praised. He returns to the Southern California arts community from his most recent position as Executive Director of American Ballet Theatre in New York City. While there, he increased ticket income and annual contributions for the organization by nearly 20 percent. He also tripled the Ballet's touring weeks and the resources devoted to education and training programs. Prior to his position at the ABT, he served as the President of the Detroit Symphony Orchestra, where he provided fundraising leadership and creative direction for the orchestra's \$60 million renovation project, and helped dramatically increase ticket sales while initiating several new series for the orchestra. Spisto established a reputation as a superb arts executive here in California, where he spent over ten years as the Executive Director of the Pacific Symphony Orchestra in Orange County. During his tenure there, he tripled the orchestra's annual budget all while eliminating a prior deficit and successfully completing the orchestra's first endowment campaign. In addition, he established a series of innovative recording projects with Sony Classical and oversaw many nationally-recognized commissioning projects. A strong advocate of arts education, he built one of the largest and most respected music training and outreach efforts. During his career, Spisto has also served as Director of Marketing for the Pittsburgh Symphony Orchestra and Director of Operations and Development for the Performing Arts Center at UC Berkeley. He holds a Masters degree from the University of Wisconsin in Arts Administration and a Bachelors of Business Administration from the University of Notre Dame, and spent many years acting, directing and producing plays and musicals throughout his student days, as well as in professional summer theater.

**Michael G. Murphy**  
GENERAL MANAGER

**Dave Henson**  
DIRECTOR OF MARKETING  
AND COMMUNICATIONS

**Todd Schultz**  
DIRECTOR OF DEVELOPMENT

**Mark Somers**  
DIRECTOR OF FINANCE

**Richard Seer**  
DIRECTOR OF  
PROFESSIONAL TRAINING

**Robert Drake**  
DIRECTOR OF PRODUCTION

**Bonnie Johnston**  
DIRECTOR OF EDUCATION

## ARTISTIC

**Brendon Fox**  
ASSOCIATE DIRECTOR/  
CASTING

**Diane Sinor**  
DRAMATURGY ASSOCIATE

**Janet Hayatshahi**  
LITERARY ASSISTANT

**Jan Gist**  
VOICE AND SPEECH COACH

**Stage Management**

**Leila Knox**  
PRODUCTION STAGE MANAGER

**Tracy Skoczalas**  
ASSISTANT STAGE MANAGER

**A. Samantha Beckhart**  
STAGE MANAGEMENT INTERN

## PRODUCTION

**Debra Pratt Ballard**  
ASSOCIATE DIRECTOR  
OF PRODUCTION

**Ellen Dieter**  
COMPANY MANAGER

**Jan Burgoyne**  
PRODUCTION COORDINATOR

**Technical**

**Benjamin Thoron**  
TECHNICAL DIRECTOR

**Wendy Stymerski, Liz Eisele**  
ASSISTANT TECHNICAL  
DIRECTORS

**Amanda Stephens**  
RESIDENT DESIGN ASSISTANT

**Rusty Jolgren**  
SHOP FOREMAN/  
MASTER CARPENTER

**Bob Dougherty**  
SHOP FOREMAN/  
MASTER CARPENTER, FESTIVAL

**Thayne Greene**  
FLYMAN/STAGE CARPENTER,  
GLOBE

**Carole Payette**  
CHARGE SCENIC ARTIST

**Adam Bernard, Victoria Erbe,  
Mary Martinez, Emily Nichols,  
Grace Uffner**  
SCENIC ARTISTS

**Matthew Clark, Jim Hopper,  
Tim Jung, Josh Payne**  
CARPENTERS

**Stephan Aldrich-Lutz**  
CHARGE CARPENTER, CARTER

## Costumes

**Stacy Sutton**  
COSTUME DIRECTOR

**Charlotte Devaux Shields**  
RESIDENT DESIGN ASSISTANT

**Kristin Sauter**  
ASSISTANT TO THE DIRECTOR

**Linda Black**  
CRAFTSUPERVISOR/DYER/PAINTER

**Louise M. Herman, Chris Moad**  
DRAPERS

**Gloria Bradford,  
Anne Glidden Grace**  
ASSISTANT CUTTERS

**Mary Miller**  
COSTUME ASSISTANT

**Mariah Bowers, Erin Cass,  
Margo Selensky**  
STITCHERS

**Amanda Thornton**  
CRAFT ARTISAN

**Molly O'Connor**  
WIG & MAKEUP SUPERVISOR

**Melyssa Swensen**  
ASSISTANT TO WIG & MAKEUP  
SUPERVISOR

**Leslie Espinoza**  
WIG ASSISTANTS

**Michael Dondanville II,  
Angela Miller**  
LEAD DRESSERS

**Kim Parker, Kelley Sikes,  
Lindsey Wilhelm, Lisa Wylie**  
DRESSERS, GLOBE

**Allison Reyes**  
WIGS RUNNING CREW, GLOBE

**Angie Land**  
RENTAL AGENT

**Properties**

**Neil A. Holmes**  
PROPERTIES DIRECTOR

**M.H. Schrenkeisen**  
SHOP FOREMAN

**Rory Murphy**  
LEAD CRAFTSMAN

**Ryan Buckalew**  
CRAFTSPERSONS

**Kristi Hummel-Rosen**  
PROPERTIES ASSISTANT

**Pat Cain**  
PROPERTY MASTER, GLOBE

**Marcus Polk**  
PROPERTY MASTER, CARTER

**Lighting**

**Chris Rynne**  
LIGHTING DIRECTOR

**Tonnie Ficken**  
MASTER ELECTRICIAN, GLOBE

**Jim Dodd**  
MASTER ELECTRICIAN, CARTER

**Kevin Liddell**  
MASTER ELECTRICIAN, FESTIVAL

**Randy Anetsky, Jason Bieber,  
Ross Glanc, AHyson Guertin,  
Tricia Lesinski, Andy Lowe,  
Megan Lujan, Miranda Mikesch,  
Leah Nellman, Andrea Ryan,  
Matthew Stearns, Brennan  
Taylor, Erica Zeckser**  
ELECTRICIANS

**Sound**

**Paul Peterson**  
SOUND DIRECTOR

**Erik Carstensen**  
MASTER SOUND  
TECHNICIAN, GLOBE

**Ryan Gastelum**  
MASTER SOUND  
TECHNICIAN, CARTER

**Jeremy Nelson**  
MIC RUNNER, GLOBE

## ADMINISTRATION

**Roberta Hussey**  
EXECUTIVE ASSISTANT

**Sandra Parde**  
ASSISTANT TO THE  
GENERAL MANAGER

**Information Technology**

**Dean Yager**  
INFORMATION TECHNOLOGY  
MANAGER

**Thad Steffen**  
INFORMATION TECHNOLOGY  
ASSISTANT

**Human Resources**

**Jenny Kazan-Mills**  
INTERIM HUMAN RESOURCES  
MANAGER

**Maintenance**

**Sean La Motte**  
BUILDING MANAGER

**Violanda Corona, Ismael  
Delgado, Roy Edenfield,  
Humberto Elvira, David Gaspar,  
Roberto Gonzalez,  
Reyna Huerta, Margarita Meza,  
Jose Morales, Maria Rios**  
BUILDING STAFF

## PROFESSIONAL TRAINING

**Llance Bower**  
PROGRAM COORDINATOR

**Maria Carrera, Cynthia  
Caywood, Sabin Epstein,  
Gerhard Gessner, Jan Gist, Peter  
Kanelos, Colleen Kelly, Fred  
Robinson, Terry Ross**  
MFA FACULTY

**Phoebe Costerisan, James  
Feinberg, Corey Johnston, Robin  
Sanford Roberts**  
MFA PRODUCTION STAFF

## EDUCATION

**Raúl Moncada**  
EDUCATION ASSOCIATE

**Peter Webster**  
EDUCATION CONSULTANT

**Holly Ward**  
TOUR COORDINATOR

**Carol Green**  
SPEAKERS BUREAU COORD.

**Lori Lethcoe, Melanie Marsh,  
Jan Manzo, Don McClure, Jaun  
Manzo, Rob MacAuley, Sandra  
Ruiz, Janet Hayatshahi**  
TEACHING ARTISTS

## FINANCE

**J. Adam Latham**  
PAYROLL CLERK/  
ACCOUNTING ASSISTANT

**Diane Jenkins**  
ACCOUNTING ASSISTANT

**Lynn Dougherty**  
RECEPTIONIST

## DEVELOPMENT

**Brad Ballard**  
ASSOCIATE DIRECTOR,  
MAJOR & PLANNED GIFTS

**Chris Graham**  
ASSOCIATE DIRECTOR,  
CORPORATE RELATIONS

**Annamarie Maricle**  
ASSOCIATE DIRECTOR,  
INSTITUTIONAL GRANTS

**Michele Prosser**  
ASSOCIATE DIRECTOR,  
ANNUAL FUND

**Eileen A. Prisby**  
EVENTS MANAGER

**Diane Addis**  
MEMBERSHIP ADMINISTRATOR

**June Rodgers**  
TELEFUNDING MANAGER

**Diana Steffen**  
DEVELOPMENT ASSISTANT

**Donor Services**

**Eve Childs, Maureen Latour,  
Brett Young**  
SUITE CONCIERGES

**Tony Okun, Tressa Shaver,  
Kevin Tom, Pat Van Sloun**  
V.I.P. VALET ATTENDANTS

## MARKETING

**Becky Biegelsen**  
PUBLIC RELATIONS MANAGER

**Frank Teplin**  
AUDIENCE DEVELOPMENT  
MANAGER

**Cate Burke**  
GROUP SALES MANAGER

**Elisha Solmes**  
PUBLICATIONS COORDINATOR

**Rachel Huber**  
PUBLIC RELATIONS ASSISTANT

**Peggy Ryan**  
MARKETING ASSISTANT

**Erica Dei**  
GRAPHIC DESIGNER

**Craig Schwartz**  
PRODUCTION PHOTOGRAPHER

## Subscription Sales

**Scott Cooke**  
SUBSCRIPTION SALES MANAGER

**Russ Allen, Anna Bowen-Davies,  
Stanley Einhorn, Arthur Faro,  
Andrew Fink, John Hatfield,  
Jessica Morrow, Ken Seper,  
Yvonne Silva, Grant Walpole,  
Molly Yoder-Williams**  
SUBSCRIPTION SALES  
REPRESENTATIVES

## Ticket Services

**Shari Ressel**  
TICKET SERVICES MANAGER

**Elaine Gingery**  
TICKET OPERATIONS MANAGER

**Tim Cole, Shouna Shoemaker**  
ASSISTANT MANAGERS

**Jean McKissick**  
DATA COORDINATOR

**Denishia Clark, Michael Crowe,  
Dru Garcia, Mame Gile, Robert  
Glaze, Andy Gutierrez, John  
Hobbs, Paul Jozwicki, Jim  
Lawrence, Jennifer McKay, Lisa  
Moering, Nick Norvell, Paul Ortiz,  
Byrne Owens, Daniel Patterson,  
Yolanda Pumphrey, Nikki Scheidt,  
Stephen Spiers, Wendy Telford,  
Laurel Withers**  
TICKET SERVICES REPRESENTATIVES

## PATRON SERVICES

**Mike Callaway**  
THEATRE MANAGER

**Marla Greene**  
FRONT OF HOUSE ASSISTANT

**Merlin D. "Tommy" Thompson**  
PATRON SERVICES  
REPRESENTATIVE

**L. Jay Maness, Marla Greene,  
Teresa McGee, Brian Ulery**  
HOUSE MANAGERS

**Dana Juhl**  
FOOD & BEVERAGE MANAGER

**Elaine Nelson, Ivan Rivas, Roland  
Roberge, Brock Roser, Tess  
Rowley, Anne-Marie Shafer, Kim  
Thurston, Felicia Tobias, Kawan  
Williams**  
PUB STAFF

**Rose Espiritu,  
Stephanie Rakowski**  
GIFT SHOP SUPERVISORS

**Security/Parking Services**

**Rachel "Beahr" Garcia**  
SECURITY/PARKING  
SERVICES SUPERVISOR

**Irene Herrig, Rose Ordaz**  
SECURITY OFFICER

**Sherisa Eselin, Deborah Elliot,  
Jane Geren, Janet Larson, Ben  
Koskovich, Crystal Walker**  
PARKING LOT ATTENDANTS

# RESERVE NOW! LIMITED OPPORTUNITY!



## A NEW CONCEPT IN RETIREMENT LIVING IS COMING SOON.

Forget everything you know about retirement communities. Walnut Village is creating a Southern California oasis for discerning individuals ready to trade in the mundane for the extraordinary. Opening in 2007, this all-inclusive resort-style village will combine all the amenities to support your active lifestyle with the exceptional benefits of health care on-site should you ever need it. You've planned your whole life, now it's time to enjoy the carefree lifestyle and peace of mind that comes with knowing your future is secure at Walnut Village. There are only 120 residences available for reservation. **Call now to join this limited opportunity to become a Charter Member and enjoy preconstruction benefits and savings! To reserve your new home call 1-866-WV-for-ME (1-866-983-6763).**



### SALES CENTER NOW OPEN

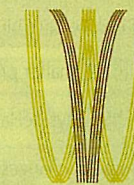
891 South Walnut Street, Anaheim, CA 92802

[www.walnutvillage.org](http://www.walnutvillage.org)



CA Lic# 306000961 / COA 197 Application pending.

*'Live life your way at Walnut Village.'* Shirley Jones



**WALNUT VILLAGE**

a front porch community