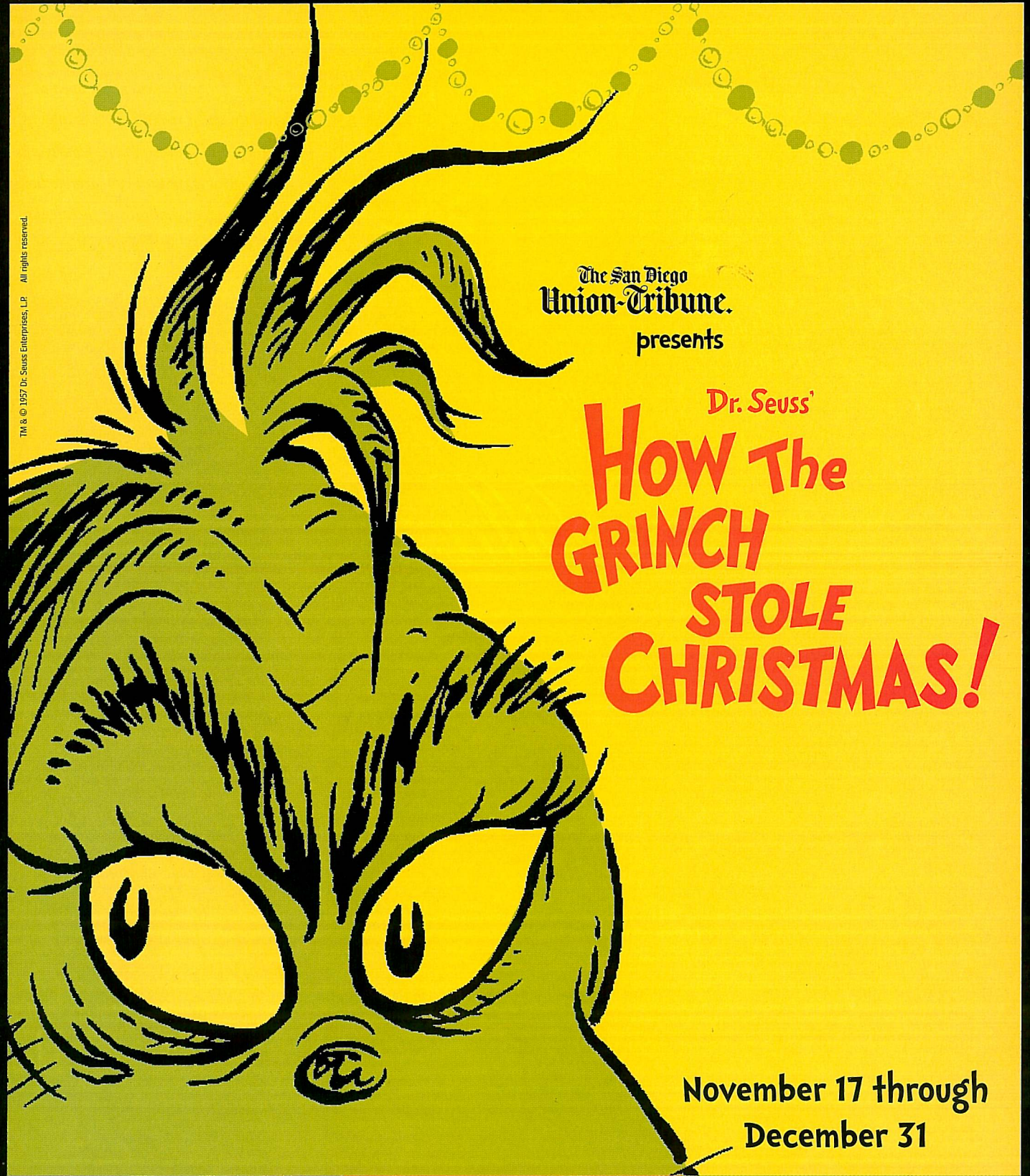


THE GLOBE THEATRES

performances

at the **OLD GLOBE THEATRE**

NOVEMBER - DECEMBER 2002



TM & © 1957 Dr. Seuss Enterprises, LP All rights reserved.

The San Diego
Union-Tribune.
presents

Dr. Seuss'
**How The
GRINCH
STOLE
CHRISTMAS!**

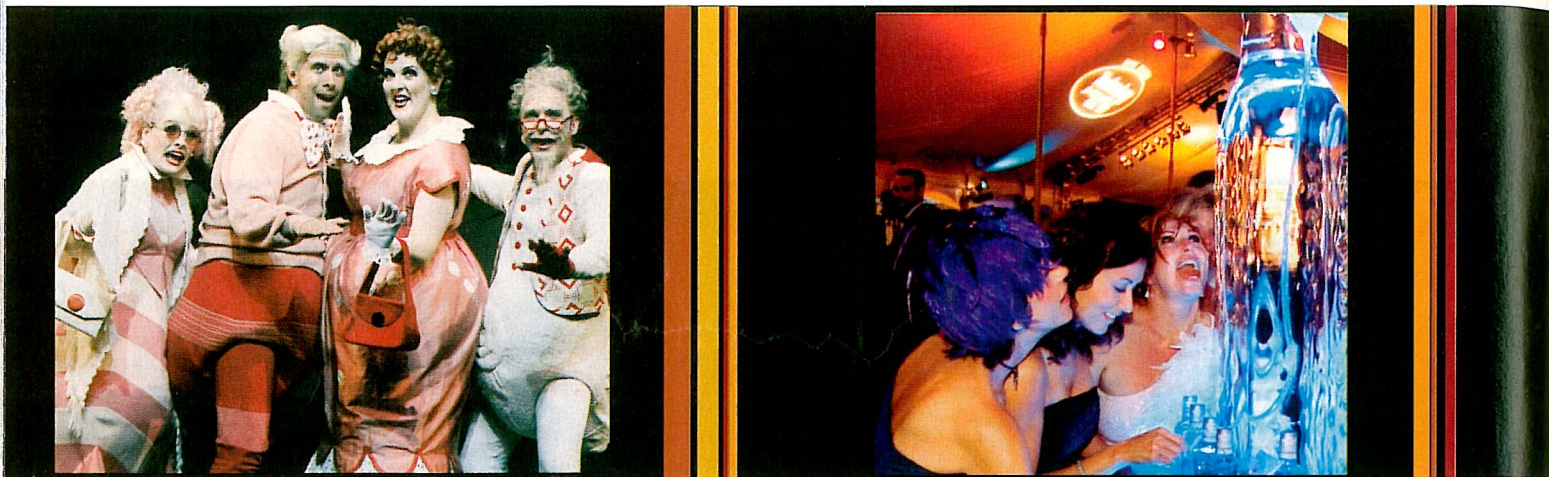
November 17 through
December 31

OLD GLOBE THEATRE

CASSIUS CARTER CENTRE STAGE

LOWELL DAVIES FESTIVAL THEATRE

IN THE WINGS



left: *How the Grinch Stole Christmas!*; right: BRAVO San Diego.

ON THE BOARDS

Theater. Holiday-themed shows are making their annual appearances, including the Globe Theatres' **How the Grinch Stole Christmas!**, beginning Nov. 17 in Balboa Park. This Suessian-inspired musical fable about a churlish green thing with a holiday hang-up is now in its fifth year. (619) 239-2255, www.theglobetheatres.org.

New to the San Diego holiday mix is **Jacob Marley's Christmas Carol** at the North Coast Repertory Theatre, Nov. 24–Dec. 29. This one-man show features local favorite Ron Choularton as Ebenezer Scrooge's business partner, who has his own tale of redemption to tell. 987D Lomas Santa Fe Drive, Solana Beach, (888) 776-6278, www.northcoastrep.org.

The musical spectacle **Blast!** takes the traditional marching band/outdoor pageantry format to raucous new heights—this is not your father's half-time show. **Blast!** won a Tony Award last year for best special theatrical event. It blows into downtown's Civic Theatre Nov. 19–24. 202 C St., (619) 570-1100, www.broadwaysd.com.

The Renaissance Theatre Company has scored hits with its first three productions and is going for four in a row with its current production of two Edward Albee one-acts: the seminal **The Zoo Story** and the farcical **The American Dream**. Performances close Nov. 10. 6th@Penn Theatre, 3704 Sixth Ave., Hillcrest, (619) 688-9210, www.sdtheatre.info.

BRAVO FOR THE ARTS

Gala. Music, dance and theater are tastefully united with gourmet food and wine in one of the Southland's major cultural events,

BRAVO San Diego, Nov. 23 at the Westgate Hotel. This fund-raising gala features nearly 700 performers from 50 performing arts groups on 19 different stages, as well as dozens of food and wine stations, throughout three floors of the downtown hotel. It is the greatest assembly of San Diego's performing arts under one roof, and raises money for the Performing Arts League, a service organization for more than 130 local arts groups. BRAVO San Diego culminates a week-long series of special events at the Westgate known as **San Diego's World of Food and Wine**. This fourth annual event, Nov. 18–23, serves up haute cuisine along with haute couture. 1055 Second Ave. For information on BRAVO San Diego: (619) 238-0700, www.sandiegoperforms.com. For information on the World of Food and Wine: (619) 557-3655, www.westgatehotel.com.

THE GLOBE theatres



Happy Holidays to you all....

What a pleasure to be able to welcome you back to the fifth viewing of Dr. Seuss' *How the Grinch Stole Christmas!* And, in all truth, what an amazing development. Although we had high hopes, indeed, for our Green Friend a few years back when Audrey Geisel so graciously allowed his first visit to Balboa Park, we had no idea this annual event would become such an immediate sensation and would so naturally become a new and enduring tradition to this season of universal love and celebration.

Perhaps this little lesson of forgiveness, of reaching out for the estranged has never come at a better or more needful time. The continually amazing element of all live theatre is its ability to reach beyond the immediate meaning and to unlock places in our hearts and minds we have not been able to reach otherwise. It is also our holiday wish this year that the gesture of love, the healing implicit in this remarkable fable, extend not only to you and your circle of loving friends and family, but across the great Globe itself, to signal gently but insistently to all mankind of our eternal need to acknowledge each other, to embrace each other, and to include each other in whatever good we can imagine for this torn and weary world.

May the blessings of this season be always with you and those you love.

Jack O'Brien, Artistic Director



As I begin my tenure as Executive Director, I want to express how truly privileged I feel to be a new member of the Globe family. For years I have known of the Globe's international reputation for artistic excellence, and it is indeed an honor to have the opportunity to team up with not one but two of the giants of the theatre world – Craig Noel, the true heart and soul of this incredible organization, and Jack O'Brien, who, with two plays currently running on Broadway, is arguably America's most highly-regarded director.

But while the Globe is now known throughout every corner of the theatre world, I am very respectful of the fact that its roots remain firmly planted in San Diego. This is due in large part to you, the audiences and supporters, who have recognized the value of the work being done on our stages and throughout the community. Your involvement has not only sustained the Globe for 67 years but has made it one of the cultural jewels of San Diego and Southern California.

Now, with an ever-mindful eye of economic conditions and a commitment to fiscal responsibility, I am eager to work with staff and audiences alike to begin taking steps to continually enhance the level of the Globe's artistry and service to the community. Together, we can create an even better Globe that will remain at the forefront of the American theatre for many years to come.

Louis G. Spisto, Executive Director



The Globe's search for a new Executive Director is complete, and what a holiday gift we're able to present to you as a result!

Please extend a warm welcome to Louis G. Spisto. A graduate of the University of Notre Dame (BBA 1978) and the University of Wisconsin (MA 1979), Lou has previously served as Executive Director of the American Ballet Theatre in New York, as President of the Detroit Symphony Orchestra in Detroit, and as Executive Director of the Pacific Symphony Orchestra in Orange County. He brings with him a wealth of experience in arts marketing, management and fundraising. You know, of course, that Lou's alma mater attracts 100,000 person crowds to its football games. Tickets to those games are precious commodities. You can expect similar demand for tickets here at the Globe, so be sure to renew or order your subscriptions early!

With Lou's arrival, we are also celebrating Gareth Clark's illustrious service, now completed, as our Interim Managing Director. Gareth was known to many of you as the Regional President of Northern Trust Bank. He postponed a calm and contented retirement to serve as our Interim Managing Director because of his love for our Theatres. During the past 10 months, he has managed our day-to-day operations, has given us leadership and has left an indelible impression on us. As an expression of our thanks to both Gareth and Northern Trust Bank, I am pleased to report that Gareth has been named an Honorary Associate Artist of the Globe. That means that his picture will be displayed in the Green Room, where actors pass their time before entering onto the stage, and that Gareth will be entitled to carry a spear across the back of the stage, whether called for by the script or not, in any production of his choosing, Jack O'Brien willing.

Our thanks would not be complete, and the holidays would not be the **who**-liday we have all come to enjoy, without a word about "Mrs. Dr. Seuss" herself, Audrey Geisel. Dr. Seuss' *How the Grinch Stole Christmas!* is Audrey's extraordinary, personal gift to the Globe. Her gift, and The San Diego Union-Tribune's ongoing sponsorship of this classic production, define for me the true spirit of the holidays. We are ever grateful to them.

From all of us at the Globe, happy holidays and the brightest of New Years!

Paul Meyer, President, Board of Directors

The San Diego
Union-Tribune.
Presents

Dr. Seuss'
**How The
GRINCH
STOLE
CHRISTMAS!**TM

Book & Lyrics by
Timothy Mason

Music by
Mel Marvin

Scenic Design
John Lee Beatty

Costume Design
Robert Morgan⁺

Lighting Design
Pat Collins

Sound Design
Paul Peterson
Based on original design by
Jeff Ladman

Assistant Director
Karen Carpenter

Assistant Director
Brendon Fox

Musical Staging Recreated By
David Brannen

Stage Manager
D. Adams*

Assistant Stage Manager
Tracy Skoczelas*

Choreography
John DeLuca

Musical Direction
James Vukovich

Directed by
Jack O'Brien

Additional production support provided by
Audrey S. Geisel
and
The San Diego Foundation Dr. Seuss Fund

Produced by special arrangement with Dr. Seuss Enterprises, L.P.
How the Grinch Stole Christmas! book and charactersTM and © 1957 Dr. Seuss Enterprises, L.P.
Dr. Seuss propertiesTM & © 2001 Dr. Seuss Enterprises, L.P. All Rights Reserved.
Originally commissioned by Minneapolis Children's Theater, Minneapolis, Minnesota

Artistic Director
Jack O'Brien

Executive Director
Louis G. Spisto

Artistic Director
Craig Noel

CAST OF CHARACTERS

(in order of appearance)

Old Max Mitchell Edmonds*
Cindy-Lou Who Mary Frances McClay -or- Shannon Partrick
J.P. Who Scott Dreier*
Mama Who Annette Michelle Sanders*
Grandpa Seth Who Robert MacAulay*
Grandma Who Eileen Bowman*
Boo Who Nicholas Felizardo
Annie Who Charlotte Wen
Danny Who Danny McCarthy
Betty-Lou Who Alejandra Jimenez
Grown-up Whos Alex Apostolidis*, David Brannen*,
Danielle Forsgren*, Meredith Kage Clark*,
Joseph Molina*, Rodney Peck*,
Little Whos THE WHITE GROUP
James Patterson, Julianna D. Rose,
Kathleen Sullivan, Jennica Vargas
-OR-
THE PINK GROUP
Gina Holslag, Zev Lerner,
Alynia Phillips, Natalya Phillips
OR-
THE RED GROUP
Alexa Bergman, David Cabinian,
Jenianne Fortney, Kelly McCarthy
Young Max Rusty Ross*
The Grinch Guy Paul*

TIME: Late December
LOCATION: Some Place Very Near Who-ville

There will be no intermission

*Member of Actor's Equity Association, the Union of Professional Actors and Stage Managers in the United States
+Associate Artist of The Globe Theatres



Additional Credits for this production of Dr. Seuss' *How the Grinch Stole Christmas*:

The role of Danny Who will be played by Zev Lerner.

ZEV LERNER

(Danny Who)

THE GLOBE THEATRES: *All My Sons, How the Grinch Stole Christmas!* ('01), *ELSEWHERE: One For the Road, Lamb's Players Theatre: The Music Man, The Wizard of Oz*, and at many local appearances. His favorite Dr. Seuss book is *Green Eggs and Ham*.



The boy's role in the Little Who Ensemble (pink group) will be played by Morgan Hollingsworth.

MORGAN HOLLINGSWORTH

(Little Who Ensemble, Pink Group)

Morgan Hollingsworth was last seen in the Limon/Carr production of *Peter Pan*. He has also performed at Starlight in *Evita* (with his entire family) and in *The Wizard of Oz*. Morgan's favorite Dr. Seuss book has always been *Green Eggs and Ham*.

Amanda Berning and Joy Newbegin will be performing in the Teen Ensemble.

Their bios may be found on pages eight and nine of the program.

Ben Green is playing bass with the orchestra.

Shelly Williams is the Assistant Costume Designer.

DIRECTOR'S NOTES

by Jack O'Brien

There's really no point in telling you much about *How the Grinch Stole Christmas!*, since you are about to see for yourself. If this is your very first time in a theater, I can only say that I envy you the next 80 or so minutes, and rest assured that we're going to do our very best to make sure you never forget this moment, and that you continue to come back for the rest of your life.

If this is your zillionth time in the theater, you know how futile these program notes can be. If I have to "explain" anything, I probably shouldn't have tried to put it on stage in the first place, right? So we can get right past that one, as well.

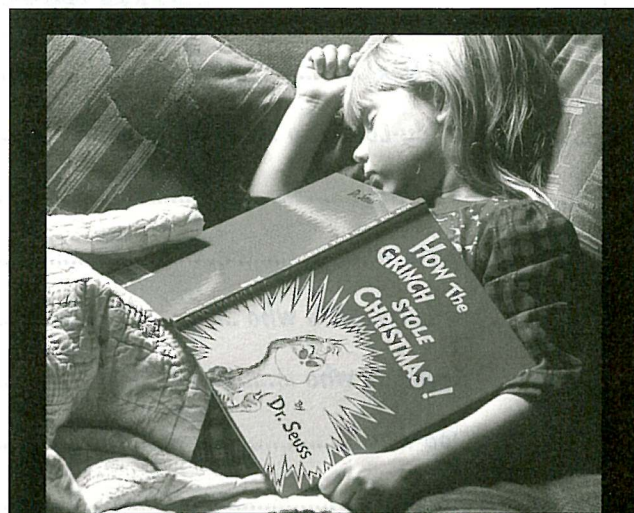
No, what I wish to share with you in the brief moments before the house lights go down, is an appreciation for a very special kind of genius. The kind of genius that uses words in such an enchanting way as to make us – whether we are children or adults – want to read them! Actually want to read!

No need to talk about philosophy: there's plenty of it tucked away in the work of Dr. Seuss, and there will be ample opportunities for discovery in the delicious musical just ahead. But it's not just that Dr. Seuss had something to write about – it's the way he chose to write it. Words that are fun to see. Words that are fun to say. Words that must be repeated out loud, over and over, and yet, words that never tire our ears, no matter how many generations continue to repeat them.

Made up words. Inverted words. Silly words. Solemn words. Musical words. Percussive words. Words that float like feathers, that loop like birds, that squiggle like gerbils, that splat like tubas.

What an imagination he had! What a thrilling, unmistakable, unique, fabulous imagination. And that he chose to share it with us, while we're young – well, that's the most amazing thing of all!

He made, in the Grinch, a fantabulous creature, one that is destined to live forever. Right up there, I believe, with King Lear, and Harpagon, and Oedipus, and Saint Joan. A creature that fascinates, that challenges, that insults, that even scarifies us. And one we take to our hearts, like that other glowing holiday gorgon, Ebenezer Scrooge – and for some of the very same reasons.



**Every Who
Down in Who-ville
Liked Christmas a lot ...
But the Grinch,
Who lived just north of Who-ville,
Did NOT!**

But in giving this creature to us, Dr. Seuss chose words that have never been put together in a similar way before, nor since. He's a reader's dream. Thank God!

It seems to us here at the Globe we have a great deal to be thankful for this holiday season. We are all here, together for the holidays, together with our real and chosen families. That's quite enough of a gift; but there in the same stocking, is someone called Dr. Seuss. And that, just possibly, is the very best present of all.

MUSICAL NUMBERS

"The Holly And The Ivy"	Who Chorale
"Who Likes Christmas?"	Who Family, Grown-up Whos & Little Whos
"I Hate Christmas Eve"	The Grinch, Young Max, J.P. Who, Mama Who, Grandpa Seth Who, Grandma Who, Cindy-Lou Who, Danny Who, Annie Who, Betty-Lou Who, Boo Who
"Whatchama-who"	The Grinch, Little Whos
"Good King Wenceslas"	Who Chorale
"I Hate Christmas Eve" (Reprise)	The Grinch
"Last Minute Shopping"	J.P. Who, Mama Who, Grandpa Seth Who, Grandma Who, Who Family, Who Shoppers & Who Merchants
"One Of A Kind"	The Grinch
"Now's The Time"	J.P. Who, Mama Who, Grandma Who, Grandpa Seth Who
"A Never Never Very Merry Christmas"	The Grinch, Young Max
"Santa For A Day"	Cindy-Lou Who
"Who Likes Christmas?" (Reprise)	Who Chorale
"One Of A Kind" (Reprise)	The Grinch, Young Max, Cindy-Lou Who
"Deck The Halls"	Old Max, Little Whos, Audience
Finale	The Grinch, Cindy-Lou Who & Whos Everywhere

WHO-CHESTRA

Musical Director/Conductor	James Vukovich
First Violin	Alyze Dreiling
Second Violin	Anna Rose
Cello	Loretta Kirkell
Bass	Ted Hughart
Percussion	Jonathan Szanto
Music Contractor/Clarinet/Flute	Gary Scott
Clarinet & Tenor Sax.....	John Rekevics
Synthesizer	Don LeMaster Ron Cuncell

Orchestra musicians are members of the American Federation of Musicians of the United States and Canada.

PROFILES



EILEEN BOWMAN
(Grandma Who)
THE GLOBE
THEATRES:

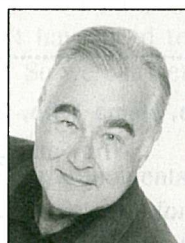
Dr. Seuss' *How the Grinch Stole Christmas!* ('98-'01), *The Enchanted*. ELSEWHERE: Eileen's credits include *The Music Man*, *Singin' in the Rain* and Eliza Doolittle in *My Fair Lady* at the San Diego Civic Light Opera. Other credits include *Animal Crackers*, *Reunion*, *Dames At Sea*, and Snow White in *Beach Blanket Babylon* at the Sands Hotel in Las Vegas. Film and television credits include several movies of the week as well as *Top Dog*, starring Chuck Norris.



SCOTT DREIER
(J.P. Who)
THE GLOBE
THEATRES:

Dr. Seuss' *How the Grinch Stole Christmas!* ('01). REGIONAL: *Forever Plaid*, Theatre in Old Town; *Into the Woods*, *How to Succeed in Business...*, Moonlight Amphitheatre; *Little Shop of Horrors*, Poway Center for the Performing Arts (among others); *Big River*, *Camelot*, Starlight Bowl; *Company* (Backstage Award), *Fiddler on the Roof*, Santa Barbara Civic Light Opera; *The Glass Menagerie*, Charles Jehlinger Theatre; *Broadway Bound*, Michael Thomas Theatre. FILM: *Enchanted* (Showtime). TV: Mr Dreier has been seen in numerous national and regional commercials. Scott recently finished recording his debut solo CD and it will be available this winter in stores and on www.scottdreier.com.

ADDITIONAL CREDITS: Mr. Dreier recently sang with Barbra Streisand at the Democratic National Convention and at her last two concerts in Los Angeles. EDUCATION: Mr. Dreier is a graduate of the American Academy of Dramatic Arts.



MITCHELL EDMONDS
(Old Max)
THE GLOBE
THEATRES:

Taking Steps, *Cat's Play*, *Foxfire*, *Tartuffe*, *Othello*, *A Midsummer Night's Dream*, *Our Town*. OFF-BROADWAY: *Two Shakespearean Actors*, *Red, White and Maddox*. REGIONAL: *The Body of Bourne*, Mark Taper Forum; *God's Man in Texas*, Geffen Playhouse; *Cat on a Hot Tin Roof*, *Heartbreak House*, *The Winter's Tale*, *Twelfth Night*, *A Christmas Carol*, *Threepenny Opera*, *Major Barbara*, *Tartuffe*, *Design for Living*, *Under Milkwood*, *Great Expectations*, *The Seagull*, *A Noise Within*; *Long Day's Journey Into Night*, San Diego Rep. FILM: *61**, *The Eyes of Laura Mars*, *Island of the Alive*, *World War III*, *Night Fighter*, *Sixteen*, *The Best Little Whorehouse in Texas*. TV: *Chicken Soup for the Soul*, *Frasier*, *After Jimmy*, *Dream On*, *The Bold and the Beautiful*, *General Hospital*, *Days of Our Lives*, *Benson*, *Gloria Vane*, *Working*, *Campus Cops*, *South of Sunset*, *Murder, She Wrote*, *An Enemy of the People*, *Snoops*.



NICHOLAS FELIZARDO
(Boo Who)
THE GLOBE
THEATRES:

Dr. Seuss' *How the Grinch Stole Christmas!* ('99-'01). Other credits include: City of La Mesa talent show, *The Magic Flute*, *Faust*, San Diego Opera; Broadway Jr. Theatre; *Wizard of Oz*, Starlight Theatre; *Gieselle*, American Ballet Theatre. Nicholas is 10 years old and enjoys playing baseball and singing with his Dad's band, *Makai*. Nicholas attends Allen/Ann Daly Elementary School in Bonita. His favorite Dr. Seuss book is *Green Eggs and Ham*.



ALEJANDRA JIMENEZ
(Betty Who)
THE GLOBE
THEATRES:

Debut. ELSEWHERE: *Bye, Bye, Birdie*, Coronado Playhouse; also, numerous San Diego Junior Theater productions and local benefit performances at the San Diego Repertory and Lamb's Players Theaters. Alejandra's favorite Dr Seuss book is *The Lorax*.



ROBERT MacAULAY
(Grandpa Seth Who)
THE GLOBE
THEATRES:

The Full Monty, Dr. Seuss' *How the Grinch Stole Christmas!* ('98-'01). ELSEWHERE: Robert's Toronto credits include *Mad Cows & Englishmen*, *Bordering on Madness* and *An American in Harris* with The Second City; the Canadian premiere of *Assassins* (Canadian Stage Company), and the world premiere of *Tesla Electric* (Buddies in Bad Times Theatre). Other productions include *Dads in Bondage: The Musical*, *Ruth*, *The Age of Dorian Gray*, *Beyond the Farside*, *Antigone* and *Woyzeck*. Robert is a member of Shakespeare & Company in Lenox, MA, having performed lead roles in *Troilus and Cressida*, *The Other Two* and *Twilight of the Gods*. He has performed in Strasbourg, France in *Saint Joan*. Film credits include *Clipping Adam*, *City of Dark*, *The River Caught Fire*, *Days Ending with Y* and *Of Darkness*.



DANNY MCCARTHY
(Danny Who)
THE GLOBE
THEATRES:

Debut. Dr. Seuss' *How the Grinch Stole Christmas!* ('98-'01), *The Merry Wives of Windsor*. ELSEWHERE: *The Wizard of Oz*, *Peter Pan*, Starlight Musical Theatre. FILM: *The Hot Chick* (Buena Vista Pictures), *Chasing Patterns*. TV: *Two Families* (pilot), *That Was Then*, *Madison Heights*. Danny is a first degree black belt in Shaolin Kempo Karate.



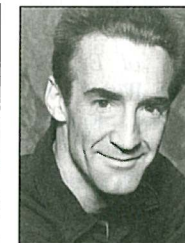
MARY FRANCES McCLAY
(Cindy-Lou Who)
THE GLOBE
THEATRES:

Dr. Seuss' *How the Grinch Stole Christmas!* ('99-'01). ELSEWHERE: Mary Frances originated the role of Doune in the world premier of *When Grace Comes In* at La Jolla Playhouse. She won first place in the youth division of *Catch a Rising Star - 2002*, a talent showcase sponsored by La Jolla Stage Co, and was a featured soloist in the Broadway Junior presentation for the NAMT 2001 conference. Mary Frances has also appeared in several industrial videos for Qualcomm and is a frequent guest soloist at local conventions and benefit concerts. Her television appearances include KPBS' *The Lounge*, as well as interviews on KNSD and KUSI.



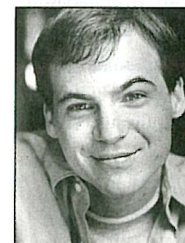
SHANNON PARTRICK
(Cindy Lou Who)
THE GLOBE
THEATRES:

Debut. REGIONAL: *The Secret Garden*, La Jolla Stage Company; *The Wizard of Oz*, Starlight Musical Theatre; *Angels Among Us*, Coronado Playhouse; also, numerous San Diego Junior Theatre productions. Shannon now studies voice with the original "Grandma Who" (Leigh Scarritt). Shannon's favorite Dr. Seuss book is *Horton Hears a Who*.



GUY PAUL
(The Grinch)
THE GLOBE
THEATRES:

Dr. Seuss' *How the Grinch Stole Christmas!* ('98-'01). ELSEWHERE: Guy's Broadway credits include *The Invention of Love*, *Tenderloin*, *1776*, *The King and I*, *Private Lives*, *Rumors*, *Getting Married*, *Wild Honey* and *Arms and the Man*. He has been seen off-Broadway in productions of *Candida*, *Cowardy Custard*, *JB*, *The Everafters*, *Flight of the Earls*, *The Oresteia*, *The Underpants*, and *Frankenstein*. He performed in the national tour of *The Sisters Rosensweig* and has performed at theaters throughout the country including Hampton Playhouse, Pioneer Theater, The Guthrie, Actor's Theater of Louisville and Westport Playhouse. His film and television credits include *See You in the Morning*, *George Washington*, *A Christmas to Remember*, *Law & Order*, *All My Children* and *As the World Turns*. He was the voice of the evil Doc Gerbil on *Courage the Cowardly Dog*. This one's for Betty, the big, fat birthday girl.



RUSTY ROSS
(Young Max)
THE GLOBE
THEATRES:

Debut. *How the Grinch Stole Christmas!* ('98-'01) NEW YORK: Robert Wilson's *Alice*, Brooklyn Academy of Music; World premiere of N. Richard Nash's *The Loss of D-Natural*, Lab Theatre; *Checkmate*, School of Visual Arts; *The Haircut*, Oasis Theatre; *Truth and Consequences*, Black Box Productions. REGIONAL: *Blind Date*, Horton by the Stream; *Adventures of Huckleberry Finn*, Totem Pole

Playhouse; *Six Degrees of Separation*, *Crazy for You*, Weston Playhouse; *You're A Good Man, Charlie Brown* (guest artist at East Carolina University), *Romeo and Juliet*, Count Basie Theatre; *Big River*, Allenberry Playhouse; *The Comedy of Errors*, H&A Dinner Theatre; *The Witch Who Was Afraid of Witches*, Emelin Theatre. NATIONAL TOUR: *A Christmas Carol*. FILM: *Sleepy Hollow*, *Clown Karma*. EDUCATION: Northwestern University.



ANETTE MICHELLE SANDERS
(Mama Who)
THE GLOBE
THEATRES: Debut.

REGIONAL: *There's No Place Like Hollywood*, Stella Adler Theatre; *The Dinner Party*, Mark Taper Forum (premiere, with John Ritter and Henry Winkler), The Kennedy Center (with Len Cariou and Penny Fuller); *Company*, *Cabaret*, West Coast Ensemble; additional credits include: *Sweeney Todd*, *King Lear*, *Man of La Mancha*, *Oliver!*, *Once Upon a Mattress*, *Fingerpainting in a Murphy Bed*, *P.S., Your Cat is Dead*. ELSEWHERE: Ms. Sanders can be heard on the original soundtrack recording of *No Place Like Hollywood*, and as the voices of many different whimsical creatures on a series of educational children's albums.



CHARLOTE WEN
(Annie Who)
THE GLOBE
THEATRES:

Dr. Seuss' *How The Grinch Stole Christmas!* ('99-'01), Broadway Junior NAMT 2001 presentation. ELSEWHERE: *Annie*, *The Wizard of Oz*, Starlight Musical Theatre; *The King and I*, *Peter Pan*,

Moonlight Amphitheatre; *Joseph and the Amazing Technicolor Dreamcoat*, San Diego Civic Theatre, David & Dorothea Garfield Theatre; *You're a Good Man, Charlie Brown*, *The Magic Mrs. Piggie-Wiggle*, *Pippi Longstocking*, *Charlotte's Web*, San Diego Junior Theatre. Charlotte is a student at Carmel Creek Elementary and her favorite Dr. Seuss book is *Horton Hears a Who!*



ALEX APOSTOLIDIS
(Grown-up Who Ensemble)
THE GLOBE

THEATRES: Dr. Seuss' *How the Grinch Stole Christmas!* ('98-'01). ELSEWHERE: Alex's credits include *Sweeney Todd*, Fritz Theatre; *Arcadia*, NCRT; *Hair*, the Lyceum and Diversionary Theatres; *The Moonshot Tape*, Lyceum Late Night; *Alabama Rain*, Riverside Theatre Company; *Send in the Clones*, Golden Fish Theatre (Seattle); *Do You Want to Play Baseball?* (director), Mae West Theatre (Seattle). Her film and tv credits include *Plan of Attack*, *Mr. Jones* and *The Chronicle*.



AMANDA BERNING
(Grown-up Who Ensemble)
THE GLOBE

THEATRES: Dr. Seuss' *How the Grinch Stole Christmas!* ('00). OTHER CREDITS include Puck in *A Midsummer Night's Dream* with 12th Night Performing Arts Academy. She was also seen in their musical production of *Angels Among Us*, directed by Leigh Scarritt. In addition to acting, singing and dancing, she enjoys reading and is an eighth grader at Diegueño Middle School. Amanda's favorite Dr. Seuss book is *The Cat in the Hat*.



DAVID BRANNEN
(Grown-up Who Ensemble)
THE GLOBE

THEATRES: Dr. Seuss' *How The Grinch Stole Christmas!* ('00-'01). ELSEWHERE: *Run for Your Wife*, *The All Night Strut*, *Dames at Sea*, Sierra Rep; *Crazy for You*, Fullerton Civic Light Opera; *Big River*, Moonlight Amphitheatre; *Me and My Girl*, *Showboat*, *A Chorus Line*, Welk Resort Theater; *Singin' in the Rain*, *Fiddler on the Roof*, Starlight Musical Theater; *Lady Be Good*, San Diego Comic Opera; *Reunion*, Hahn Cosmopolitan Theater; *West Side Story*, Theatre in Old Town; *Joseph and the Amazing Technicolor Dreamcoat*, Southwestern JC. TELEVISION: Jack in the Box, Fisk, FedEx, San Diego Remembers.



MEREDITH KAYE CLARK
(Grown-up Who Ensemble)
THE GLOBE

THEATRES: Debut. REGIONAL: *Festival of Christmas*, Lamb's Player's. ELSEWHERE: *Footloose*, *Beehive*, *Master Class*, *110 in the Shade*. Ms. Clark is a singer/songwriter, plays the piano, guitar, viola, harp, and banjo, has a degree in Neuroscience and Behavioral Biology and an infectious giggle. She is a graduate of the MFA program in Musical Theatre at San Diego State University.



DANIELLE FORSGREN
(Grown-up Who Ensemble)
THE GLOBE THE-

ATRES: Dr. Seuss' *How the Grinch Stole Christmas!* ('98-'01). ELSEWHERE: She has starred as Elsa in *The Sound of Music* and was featured in *Mame* and *Crazy for You*. Prior to that, she created the role of Lucy in the musical *Dracul* at the San Diego Rep and starred as Bitsy in San Diego's long running musical *Reunion - The Golden Oldies Musical with Wolfman Jack*. Other leads include Emmy Awards, guest star and featured entertainer; the British National Tour of *Side by Side by Sondheim* and Eva Perone in *Evita*, plus numerous operatic leads. She proudly holds the Metropolitan Opera National Council's Saunderson Award and a first place San Diego Classical Soloist medal. Ms. Forsgren is also the owner of scrapbookdiva.com



JOSEPH MOLINA
(Grown-up Who Ensemble)
THE GLOBE
THEATRES: Dr.

Seuss' *How the Grinch Stole Christmas!* ('98-'01). ELSEWHERE: Joseph was recently a featured soloist at Carnegie Hall and toured the Midwest as Richie Valens in the *Summer Dance Party*. Credits include *Celebration of the Lizard*, *Zoot Suit* and *A Christmas Carol* at San Diego Rep; *La Pastorela Navideña* with Teatro Magica Mascara; *The Who's Tommy* (Irene Ryan Nominee) at Southwestern College. Joseph was a tenor soloist in the *Misa Azteca*, a world premiere mass written by Joseph Julian Gonzalez.



JOY NEWBEGIN
(Grown-up Who Ensemble)
THE GLOBE THE-

ATRES: Dr. Seuss' *How the Grinch Stole Christmas!* ('00-'01). Other Credits include vocals for *La Boheme*, *Hansel & Gretel*, *The Magic Flute*, *Masked Ball*, San Diego Opera; *Annie*, *The Wizard of Oz*, Starlight Theatre; *Traditions of Christmas* ('95-'99), *Annie*, CCT; Chava in *Fiddler on the Roof*, *Oliver* for F.A.M.E. productions. Joy's favorite Dr. Seuss story is *What I Was Afraid Of*.



RODNEY PECK
(Grown-up Who Ensemble)
THE GLOBE
THEATRES: Dr.

Seuss; *How the Grinch Stole Christmas!* ('00-'01). OTHER CREDITS include *On the Twentieth Century*, Colony Studio; *Forever Plaid* (Los Angeles); *Angels in America: Millennium Approaches*, *M. Butterfly*, Playhouse on the Square; *The Good Doctor*, McCune Arts Center; *Crazy for You*, *Music Man*, Flat Rock Playhouse; *Reckless*, Circuit Playhouse; *Resistable Rise of Arturo Ui*, Bush Theatre. FILM: *The Rainmaker*. TV: *The Strip*, *Insight Out*.

ALEXA BERGMAN
(Little Who Ensemble, Red Group)
THE GLOBE THEATRES: Debut. ELSEWHERE: *Showboat*, Welk Resort Theatre; *Ragtime*, *Evita*, Moonlight Stage Productions; *Peter Pan*, *Singing in the Rain*, *Annie Get Your Gun*, *Pinocchio*, *Joseph and the Amazing Technicolor Dreamcoat*, The J* Co.; *Big River*, Applause. FILM: *Chairdancing Through the Decades*. Alexa's favorite Dr. Seuss book is *Green Eggs and Ham*.

DAVID CABINIAN
(Little Who Ensemble, Red Group)
THE GLOBE THEATRES: Debut. ELSEWHERE: *Evita*, *Dites Moi*, Starlight Theatre; *Pump Boys & Dinettes*, Coronado Playhouse; *A Midsummer Night's Dream*, The Waley House. FILM: *The Grand Inquisitor*. David's favorite Dr. Seuss book is *Scrambled Eggs Super*.

JENIANNE FORTNEY
(Little Who Ensemble, Red Group)
Making her San Diego debut in this show, Jenianne's favorite past roles include Gracie Shinn in *The Music Man*, Cheshire Cat in *Alice in Wonderland*, and Downey in *HONK!*. Her favorite Dr. Seuss book is *Horton Hears a Who*.

GINA HOLSLAG
(Little Who Ensemble, Pink Group)
THE GLOBE THEATRES: *How the Grinch Stole Christmas!* ('01). ELSEWHERE: *Annie Get Your Gun*, Christian Community Theatre at Mt. Helix; *Charlotte's Web*, *Annie Warbucks*, Christian Youth Theatre. Gina is a 6th grader at Dingeman Elementary, where she sings in the school choir. Her favorite Dr. Seuss book is *Green Eggs and Ham*.

ZEV LERNER
(Little Who Ensemble, Pink Group)
THE GLOBE THEATRES: *All My Sons*, *How the Grinch Stole Christmas!* ('01). ELSEWHERE: *One For the Road*, Lamb's Player's Theatre; *The Music Man*, *The Wizard of Oz*, and at many local appearances. His favorite Dr. Seuss book is *Green Eggs and Ham*.

KELLY MCCARTHY
(Little Who Ensemble, Red Group)
THE GLOBE THEATRES: Dr. Seuss' *How the Grinch Stole Christmas!* ('99-'01). ELSEWHERE: *The Wizard of Oz*, Starlight Musical Theatre; *The Wiz*, Spreckles Theatre; *Sleeping Beauty*, Missoula Children's Theatre; *The Circle*, Diversionary Theatre; *Center Stage* on KPBS Radio. FILM: *Chasing Patterns*. Kelly's favorite Dr. Seuss book is *Horton Hears a Who*.

JAMES PATTERSON

(Little Who Ensemble, White Group)
THE GLOBE THEATRES: *All My Sons*, *How the Grinch Stole Christmas!* ('01). ELSEWHERE: *The Music Man*, *Moonlight Amphitheatre*; various roles with Coast Kids Theatre; *Joseph and the Amazing Technicolor Dreamcoat*, Premiere for Kids. James is a fifth grader at the Rhoades school in Encinitas and his favorite Dr. Seuss book is *The Butter Battle Book*.

ALYNIA PHILLIPS

(Little Who Ensemble, Pink Group)
Alynia, an accomplished actress, singer and dancer, has appeared on many stages across Southern California. She aspires to a career in acting and is positively ecstatic with this, her Old Globe stage debut. Her favorite Dr. Seuss book is *How the Grinch Stole Christmas!*.

NATALYA PHILLIPS

(Little Who Ensemble, Pink Group)
Natalya began singing as a toddler and already has many public and recorded performances to her credit. A budding pianist and songwriter, Natalya is thrilled to debut theatrically in Dr. Seuss' *How the Grinch Stole Christmas!*. Her favorite Dr. Seuss book is *How the Grinch Stole Christmas!*.

JULIANNA D. ROSE

(Little Who Ensemble, White Group)
THE GLOBE THEATRES: *How the Grinch Stole Christmas!* ('01). ELSEWHERE: *Gypsy*, *The Sound of Music*, *Annie*. Julianna can be seen in commercials and print, and enjoys performing her 30 minute *Broadway Showtunes* at various venues throughout Southern California. Her favorite Dr. Seuss book is *This One!*

KATHLEEN SULLIVAN

(Little Who Ensemble, White Group)
Kathleen Sullivan is a fourth grader at Valley Center Elementary in North County. When she is not riding horses, she studies piano and voice with Joyce Brackman and was last seen as Jeffrey in *CYT's*, *Charlotte's Web*. Kathleen continues to enjoy her favorite Dr. Seuss book, *The Cat in the Hat Comes Back*.

JENNICA VARGAS

(Little Who Ensemble, White Group)
THE GLOBE THEATRES: *How the Grinch Stole Christmas!* ('98-'01), as Cindy Lou Who ('00). OTHER CREDITS: *The Wiz*, *Annie*, *Bugsy Malone* and *Babes on Broadway* for the Broadway Bound Youth Theatre at the California Center for the Arts, Escondido; *The Real & the Fake Monkey King* for the Asian Story Theatre at the Lyceum. Jennica placed first in the 1999 World Championships of Performing Arts in the Vocal-Broadway Competition. She has also appeared in television commercials, voice-overs, modeling and has performed at various concerts with the San Diego Chamber Orchestra ('00-'01).

TIMOTHY MASON

(Book & Lyrics)

THE GLOBE THEATRES: Dr. Seuss' *How the Grinch Stole Christmas!*. ELSEWHERE: *Gold*, (musical with Mel Marvin), *Cannibals*, *Time on Fire*, *The Less than Human Club*, *The Fiery Furnace* (starring Julie Harris), *Babylon Gardens* (starring Timothy Hutton and Mary-Louise Parker), *Ascension Day*, *Only You* (starring Greg Germann and Park Overall), *Before I Got My Eye Put Out*, *Bearclaw*, *Levitaton*, and *In a Northern Landscape*. Tim has won a Kennedy Center Fund for New American Plays Award, a W. Alton Jones Foundation Grant, a *Drama-Logue* Award and an NEA Writing Fellowship. He is a member of the Dramatists Guild, Actor's Equity and the Writers Guild of America, East. Tim's new screenplay, co-written with his partner, Leo Geter, is called *Swing Choir*.

MEL MARVIN

(Composer)

THE GLOBE THEATRES: Dr. Seuss' *How the Grinch Stole Christmas!*, *Tintypes*. ELSEWHERE: Mel's Broadway credits include *Yentl*, *A History of the American Film*, *Tintypes* (Tony Award nomination), and *Fascinating Rhythm*; he has had nine shows produced off-Broadway. Other credits include scores for most of America's best-known regional theaters, including Lincoln Center

Theatre, Arena Stage, The Guthrie, A.R.T., La Jolla Playhouse (*Elmer Gantry*, *The Cherry Orchard*), and the Mark Taper Forum, where he was an associate artist and wrote the original music for *Angels in America*. CURRENT PROJECTS: *Gold*, a musical written with Timothy Mason, commissioned by England's Royal National Theatre; *Guest from the Future*, an opera with libretto by Jonathan Levi, commissioned by Nine Circles Chamber Theatre, which opens in the summer of 2004; and *Buwalsky*, an opera commissioned by Holland's Opera Spanga. He is faculty composer and producing director of the Graduate Musical Theatre Writing Program at NYU's Tisch School of the Arts. *How the Grinch Stole Christmas!* is one of seven family musicals Mel has written for his daughter, Kate, who is now 18.

JACK O'BRIEN

(Director)

Mr. O'Brien's biography may be found on page 23.

JOHN DeLUCA

(Choreographer)

THE GLOBE THEATRES: Dr. Seuss' *How the Grinch Stole Christmas!*, *Romance*, *Romance*. ELSEWHERE: Most recently, John served as 2nd unit director/co-choreographer on the Miramax film *Chicago*. He choreographed the Broadway production of Liza Minnelli's *Minnelli on Minnelli*, directed and choreographed *Broadway Sings Elton John* at the New Amsterdam Theatre, directed and staged *Chita and All That Jazz*, starring Chita Rivera, and choreographed *Sweet Adeline* for the NY Encore Series and the national tour of Andrew Lloyd Weber's *Music of the Night*. John directed and choreographed premiere productions of *Lucky Guy* and *Oedipus: Private Eye* at the American Stage Company. He staged *Two Gentlemen of Verona* for the NY Shakespeare Festival and has provided staging for the Carnegie Hall Rainforest Concerts

(Sting, Diana Ross). John directed *Brigadoon* at Theatre Under the Stars, *Finian's Rainbow* in Chicago, *Company* in Pittsburgh (best director citation). In Sacramento, he directed *The King and I*, *West Side Story*, *She Loves Me*, *Desert Song*, *The Gig* (premiere), *Camelot*, *Mame*, and *Fiddler on the Roof*. John has worked on and coached lead performances for several Broadway shows including *Cabaret*, *The King and I*, *Victor/Victoria* and *Kiss of the Spider Woman*.

JAMES VUKOVICH

(Musical Director)

This is Jim's sixth show at the Globe. He most recently served as the conductor for the pre-Broadway run of *Imaginary Friends* here at the Globe. Jim has conducted the London Philharmonic, the Chicago Symphony, the New Jersey Symphony, the Houston Symphony, as well as the Tonight Show and Hollywood Bowl Orchestras. A former Atlantic Records Recording Artist, his producing, piano, and keyboard work has been featured on over 1,000 recordings, soundtracks, and live performances with such artists as: Dionne Warwick, Stevie Wonder, Brandy, Wynona Judd, Chaka Khan, David Foster, She Daisy, Julio Iglesias, Jeffrey Osbourne, Nancy Wilson, Roy Clark, Lesley Gore, The Temptations, The Spinners, The Four Tops, Mickey Gilley, Herb Jeffries, Belly Eckstine, Barbara McNair, Paula Abdul, Colm Wilkensen, Kenny Loggins, Rex Smith, Frankie Avalon, The New Edition, Anthony Crivello, Charlie Pride, Andrea McArdle, Paul Williams, Betty Buckley, Marilyn McCoo, Billy Davis, Jr., The Pointer Sisters, Rita Coolidge, Freda Payne, Barry Manilow, and Karen Morrow. Jim is a professor at USC, an active member of Theatre LA, and resides in Los Angeles.

JOHN LEE BEATTY

(Scenic Designer)

BROADWAY: *45 Seconds From Broadway*, *Proof*, *The Dinner Party*, *Chicago*, *Footloose*, *Proposals*, *Ivanov*, *the Little Foxes*, *An American*

Daughter, *The Last Night of Ballyhoo*, *Once Upon a Mattress*, *A Delicate Balance*, *The Father*, *The Heiress*, *Abe Lincoln in Illinois*, *Anna Christie*, *Redwood Curtain*, *The Sisters Rosensweig*, *The Most Happy Fella*, *Penn and Teller* (twice), *Burn This*, *Ain't Misbehavin'* (twice), *Talley's Folly*, *Fifth of July*, *Crimes of the Heart*, *Baby*, *Whoopie*, *Faith Healer*, *Loot*, *Alice in Wonderland*, among many others. OFF-BROADWAY: *My Old Lady*, *Mornings at Seven*, *Proof*, *Spinning into Butter*, *An Experiment With an Air Pump*, *Sympathetic Magic*, *Sylvia*, *The Cryptogram*, *The Destiny of Me*, *The Substance of Fire*, *A Cheever Evening*, *London Suite*, *Lips Together*, *Teeth Apart*, *The Road to Mecca*, *Song of Singapore*, *A Life in the Theatre*, *The Miss Firecracker Contest*, more than 20 seasons at Manhattan Theatre Club and Circle Rep, 8 seasons at City Center "ENCORES!" At Williamstown: *Adventures of Sherlock Holmes*, *Booth is Back in Town*. Also, credits at major regional theatres, film, opera and T.V. Recipient of the Tony, Obie, Drama Desk, Outer Critics Circle awards. Graduate of Brown University and the Yale School of Drama.

ROBERT MORGAN

ASSOCIATE ARTIST
(Costume Designer)

THE GLOBE THEATRES: Mr. Morgan has designed scenery and/or costumes for many Globe productions including *Imaginary Friends*, *The Full Monty*, *How the Grinch Stole Christmas!*, *A Moon for the Misbegotten*, *A Midsummer Night's Dream* ('78 & '85), *Clap Your Hands*, *Romeo and Juliet* ('79 & '98), *Pride's Crossing*, *Othello* ('97), *Macbeth* ('79 & '96), *King Lear* ('81 & '93) and more. BROADWAY: credits include *The Full Monty*, *I'm Not Rappaport* and *Sherlock's Last Case*. OFF-BROADWAY: *Pride's Crossing* for Lincoln Center and *The Loves of Anatol* at Circle in the Square. Mr. Morgan has worked at theaters throughout the country, including The American Conservatory Theatre, Ahmanson Theatre, Guthrie Theatre, Huntington Theatre Company, Milwaukee Rep, McCarter Theatre, Portland Center Stage, Seattle Rep,

and Studio Arena Theatre. TELEVISION: credits include *The Skin of Our Teeth* for PBS's *American Playhouse*. He has received *Drama-Logue*, Los Angeles Drama Critics Circle and San Diego Critics Circle Awards, and a New York Drama Desk Award Nomination.

PAT COLLINS

(Lighting Designer)

THE GLOBE THEATRES: *Twelfth Night*, *Cymbeline*, Dr. Seuss' *How the Grinch Stole Christmas!*. ELSEWHERE: Pat's Broadway credits include *Proof*, *Moon for the Misbegotten*, *A Delicate Balance*, *The Sisters Rosensweig*, *Conversations with My Father*, *The Heidi Chronicles*, *I'm Not Rappaport* (Tony Award), *Execution of Justice* (Drama Desk Award), the original and the 1988 revival of *Ain't Misbehavin'*, *Once Upon a Mattress*, *An American Daughter* and many more. Lincoln Center credits include *Death and the King's Horseman*, *The Threepenny Opera*, *The Floating Lightbulb* and *Measure for Measure*. OFF-BROADWAY: Pat designed this season's *Burn This*, *Quartermaine's Terms*, *How I Got That Story* and *A Life in the Theatre*. She has designed lighting at theaters throughout the country including the Mark Taper Forum, the McCarter Theatre, Berkeley Rep, Seattle Rep, Hartford Stage, Baltimore Center Stage, Long Wharf, The Guthrie, Goodman Theatre, American Repertory and Actor's Theatre of Louisville. She also designed Wagner's *Ring Cycle* at the Royal Opera House, Covent Garden and over 100 productions for opera companies throughout the world.

PAUL PETERSON

(Sound Design)

Based on original sound design by Jeff Ladman. THE GLOBE THEATRES: *All My Sons*, *Faith Healer*, *Smash*, *An Infinite Ache*, *Compleat Female Stage Beauty*, *Betrayal*, *The SantaLand Diaries*, *How the Grinch Stole Christmas!*, *The Pavilion*, *Enter the Guardsman*, *The Boswell Sisters*, *Vita and Virginia*, *The Countess*, *Crumbs from the Table of Joy*, *Orson's Shadow*, *God's Man in Texas*, *Travels with My Aunt*. He has also served as Assistant Sound Designer on over 30 productions. ELSEWHERE: *The Magic Fire*, Milwaukee Rep; *POP Tour* (1999 &

2000), La Jolla Playhouse; *Richard III*, *The Chairs*, *Demonology*, *Alice in Modernland*, Sledgehammer Theatre; *Forever Plaid*, Backstage at Aubergine; also credits at L.A. TheatreWorks, San Diego Repertory Theatre, North Coast Repertory Theatre, Cape Fear Regional Theatre, Hope Summer Repertory Theatre, Malashock Dance & Company, The University of San Diego, San Diego State University, and the Freud Theatre at UCLA. EDUCATION: Paul holds a BFA in Drama with an emphasis in Technical Design from San Diego State University. He also serves on the Professional Advisory Council for the Coronado School of the Arts and is a member of United Scenic Artists, Local 829.

KAREN CARPENTER
(Assistant Director)

Ms. Carpenter serves as Associate Artistic Director for the Globe, where she most recently directed *Smash*. THE GLOBE THEATRES: *Betrayal*, *Vita and Virginia*. ELSEWHERE: Karen Carpenter's credits include Harold Pinter's *Old Times* with Julianne Moore, *Water from the Moon* at the Westbeth Theatre (a Jonathan Larson Foundation Grant finalist), as well as Samuel Beckett's *Play* and Harry Kondoleon's *Vampires* at Yale. As the founder of Insight Entertainment, she produced the American premiere of *Time and the Room* by Botho Strauss, the New York premiere of Mac Wellman's *The Lesser Magoo*, and *Nirvanov* for the Pure Pop and Chekhov Now festivals in New York. Ms. Carpenter was the Production Stage Manager on Broadway for *Sunset Boulevard*, *Les Miserables*, (and for the national touring company), the August Wilson plays *Joe Turner's Come and Gone*, the Pulitzer-Prize winning *The Piano Lesson*, and *Two Trains Running*, also for the Brooklyn Academy of Music, Manhattan Theatre Club, La Jolla Playhouse, Williamstown Theatre Festival, Goodman Theatre, Arena Stage, Seattle Rep, the Martha Graham Dance Company, and many others. Ms. Carpenter was a member of the Yale School of Drama faculty from 1990 to 1995.

BRENDON FOX

(Assistant Director)

THE GLOBE THEATRES: *Beyond Therapy*, *An Infinite Ache*, *The SantaLand Diaries*, *The Countess*, *Private Eyes*. Mr. Fox is an Associate Director for the Globe. With The Globe Theatres/University of San Diego professional actor training program: *Getting Married*. REGIONAL: *Arms and the Man*, Alabama Shakespeare Festival; *Much Ado About Nothing*, LA Shakespeare Festival; *Romeo and Juliet*, *The Floatplane Notebooks*, Cape Fear Regional Theatre. ELSEWHERE: *Twelfth Night*, Academy of Classical Acting, The Shakespeare Theatre; *Much Ado About Nothing*, Borealis Theatre Co; *Arms and the Man*, *Pericles*, greasy joan & co; *Richard II*, Writers Theatre Chicago; *Heartbreak House*, Shaw Chicago; *Don Juan in Hell*, Bailiwick Rep; *Cloud 9*, Diversionsary Theatre.

D. ADAMS

(Stage Manager)

THE GLOBE THEATRES: *Pericles*, *The Taming of the Shrew*, *Compeat Female*, *Stage Beauty*, *Stones in His Pockets*, *A Midsummer Night's Dream*, *The Boswell Sisters*, *Art*, *Dinner with Friends*, *The Woman in Black*, Dr. Seuss' *How the Grinch Stole Christmas!* ('98-'01), *Love's Labour's Lost*, *Henry V*, *Over the River and Through the Woods*, *The Seagull*, *Thunder Knocking on the Door*, *The Merry Wives of Windsor*, *The Magic Fire*, *Bedroom Farce*, *Floyd Collins*, *Paramour*, *As You Like It*, *The Cocktail Hour*, *Emily*, *Antony and Cleopatra*, *Twelfth Night*, *Macbeth*, *The Tempest*, *Coriolanus*, *Wings*, *The Gin Game*, *Mass Appeal*, *Tartuffe*. OFF-BROADWAY: Production Stage Manager for *Thunder Knocking on the Door*. REGIONAL: Production Stage Manager for Great Lakes Theatre Festival, San Diego Repertory Theatre, Stage Manager for the Mark Taper Forum, and The Denver Center Theatre Company. ELSEWHERE: Production Stage Manager for *Sylvia*, San Francisco and Toronto; *Forever Plaid*, Theatre in Old Town; *Corridos*, a

world-premiere musical by Luis Valdez in Los Angeles and San Diego; *Living Dolls*, *In Trousers*, and *Billy Budd*, Los Angeles.

TRACY SKOCZELAS

(Assistant Stage Manager)

THE GLOBE THEATRES: *Pericles*, *All My Sons*, *Smash*, *Memoir*, *How the Grinch Stole Christmas!* ('01), *Twelfth Night*, *A Midsummer Night's Dream*, *Henry V*, *The Trojan Women*. EDUCATION: Ms. Skoczelas recently graduated from the University of North Carolina at Greensboro.

ssdc The Director is a member of the Society of Stage Directors and Choreographers, an independent national labor union

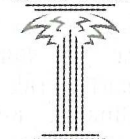
The Scenic, Costume, Lighting, and Sound Designers in LORT Theatres are represented by United Scenic Artists Local USA-829, IATSE.

California



Arts Council

CITY OF SAN DIEGO COMMISSION FOR ARTS AND CULTURE



ENRICHING OUR LIVES



SAN DIEGO ART + SOL

Little Who Ensemble



photo: Sandy Huffaker

RED GROUP

back L-R

David Cabinian
Jenianne Fortney
Kelly McCarthy
Alexa Bergman

WHITE GROUP

middle L-R

Kathleen Sullivan
Jennica Vargas
James Patterson
Julianna D. Rose

PINK GROUP

front L-R

Zev Lerner
Gina Holslag
Alynia Phillips
Natalya Phillips

FOR THIS PRODUCTION

Additional Staff

Dance Captain.....David Brannen
Assistant Costume Design...Charlotte Devaux-Shields
Assistant Lighting Design.....Chris Rynne
Studio Teachers.....Renie Geesey
Judith Durning
Orchestration.....Anita Ruth
Rehearsal Pianists.....Ron Councill
Don LeMaster
Additional Casting.....Liz Woodman, CSA

Understudies

The Grinch.....David Brannen
Old Max.....Rodney Peck
Young Max.....David Brannen
Papa Who.....Rodney Peck
Mama Who.....Danielle Forsgren
Grandpa Who.....Rodney Peck
Grandma Who.....Alex Apostolidis
Danny Who/Boo Who.....James Patterson
Betty-Lou Who/Annie Who.....Kelly McCarthy

The Globe Theatres gratefully
acknowledges the extraordinary support of our
production sponsor for *How the Grinch Stole Christmas!*,

The San Diego
Union-Tribune.

We also wish to acknowledge and thank

Audrey S. Geisel

and

The San Diego Foundation

Dr. Seuss Fund

For bringing this holiday production to San Diego,
and for her outstanding support of The Globe Theatres.

Season Sponsors

Our 2002 Season Sponsors continue a tradition of generous gifts to The Globe Theatres that sustain and enhance the work appearing on our stages.

We gratefully acknowledge their long-standing leadership throughout the years.

The Lipinsky Family

Donald and Darlene Shiley

Anonymous

Sheryl and Harvey P. White

**WELLS
FARGO**

We are also grateful to our
2002 Media Sponsor:



Membership Makes It Happen

The Globe Theatres, the flagship of San Diego's performing arts community, maintains a long-standing reputation as a fiscally responsible non-profit business. The ability to uphold this standard, while keeping ticket prices affordable, is due in large part to the annual financial support of nearly 4,000 individuals, businesses, and foundations. Please join us in giving a warm thanks and recognition to these leaders who have made tonight and many other performances possible. The Globe appreciates the support of those who have stepped into the spotlight.

DIAMOND CIRCLE (\$25,000 and above)

American Airlines	Audrey S. Geisel/The San Diego Foundation	Qualcomm, Inc.
American Express Company	Dr. Seuss Fund	Saks Fifth Avenue^
AT&T	Globe Guilders	The San Diego Union-Tribune
Bank of America	Kathryn Hattox	Sempra Energy
John A. Berol	Joan & Irwin Jacobs	Sheraton San Diego Hotel & Marina
Break-Away Tours	Mr. & Mrs. Neil Kjos	Donald & Darlene Shiley^
California Arts Council	Las Patronas	The Shubert Foundation
City of San Diego, Commission for Arts and Culture	The Lipinsky Family	Patsy & Forrest Shumway
J. Dallas & Mary H. Clark Fund of The San Diego Foundation^	The Lodge at Torrey Pines	Gaby & Rich Sulpizio
Karen & Donald Cohn	Dr. Marianne McDonald^	Union Bank of California
Continental Airlines	National Corporate Theatre Fund	Mandell Weiss Charitable Trust
County of San Diego	Northern Trust Bank	Wells Fargo
	Mr. & Mrs. Victor H. Ottenstein^	Sheryl & Harvey P. White
	The Parker Foundation	
	(Gerald & Inez Parker)	

GOLD CIRCLE (\$10,000 to \$24,999)

Anonymous (1)	Dr. Ronald & Susan Heller and Family	San Diego National Bank
Mr. & Mrs. William J. Barkett	Wanda & Tom Insley	SBC/Pacific Bell
Elisabeth & John Bergan	Deni & Jeff Jacobs	The Steven H. & Alida Brill Scheuer Foundation
Teresa & Tom Bernard	Joseph E. Jessop, Jr.	Target Stores/Mervyn's
California Bank & Trust	Katherine Kennedy/Relocation Coordinates	Anne Taubman & David Boyle
The Louis Yager Cantwell Private Foundation Trust	KPMG	Mrs. Walter M. Trevor*
Neil & Mary Clendeninn	Susan & John Major	Patricia & Christopher Weil Family Foundation
J. Dave Cours/ICON Systems, Inc.	Marsh, Inc.	Weingart-Price Fund of The San Diego Foundation
De Anza Hotel & Park	Bob Martinet	Stanley E. Willis II
Mr. & Mrs. Brian Devine	Paul & Maggie Meyer/Latham & Watkins	Carolyn W. Yorston
Christina L. Dyer	Laurie D. Munday	Ellen & Tim Zinn
Dr. Robert and Bea Epsten	Robert L. Noble, AIA	
Robert Gleason & Mark Matys	John & Laura Robbins	
Lee & Frank Goldberg		
Kathleen Healy		

SILVER CIRCLE (\$7,500 to \$9,999)

Cecilia Carrick & Stan Nadel	Ms. Jeanette Stevens^	Evelyn Mack Truitt^
------------------------------	-----------------------	---------------------

FOUNDER CIRCLE (\$5,000 to \$7,499)

Anonymous (2)	Kforce Professional Staffing	Jeannie & Arthur Rivkin^
Chalone Wine Estates	Dr. & Mrs. Stephen M. Krant	Scudder Private Investment Council
Nina & Robert Doede^	Maurice J. Masserini Charitable Trust, Wells Fargo Trustee	Harold R. Stern
Mrs. Danah H. Fayman^	Merrill Lynch^	Deborah Szekely
Fifth & Hawthorn^	Mr. Steve Miller	The T Sector
Susanna & Michael Flaster^	Money/Arenz Foundation, Inc.	Howard G. Tirschwell, D.D.S.* & Mrs. Cherie Halladay
Mrs. John H. Fox	Neiman Marcus^	TK&A Custom Catering
Arnold & Mary Ann Ginnow^	Arthur & Marilyn Neumann	Laurie & Brent Woods
Alice B. Hayes	Pratt Memorial Fund	Mrs. June Yoder
Higgs, Fletcher & Mack, LLP^	Allison & Robert Price	
Dr. & Mrs. Harry F. Hixson, Jr.	Ellen C. Revelle	
Melissa & James Hoffmann		

*Deceased

PLAYWRIGHT CIRCLE (\$2,500 to \$4,999)

Dr. & Mrs. Wayne Akeson	Bernard J. Eggertsen & Florence Nemkov^	Maria & Michael Morris^
Robert S. Albritton^	FloraStyle	Motivational Systems^
Lawrence G. Alldredge^	Gad Shaanan Design	Michael Nova,
Jan & Rich Baldwin/	Martha & George Gafford	Kristie Connell, Evan Nova
Nth Generation Computing Inc.	Goldman Ferguson Partners	Mrs. Margaret F. Peninger
Barney & Barney	Rita C. Grady	Dolly & Jim Poet
Mr. & Mrs. James W. Bastien	Fred & Alicia Hallett	Mr. & Mrs. Blaine Quick^
Bertrand at Mister A's	Home Box Office	Mr. & Mrs. Jeremiah B. Robins
Charles & Molly Brazell	Jaycraft Corporation	The San Diego Foundation
BRG Consulting^	Mary & Russell Johnson^	Stolper & Company
City National Bank	Dr. & Mrs. Richard L. Kahler	Investment Advisors
Garet & Wendy Clark	Bob & Gladys King^	Jay & Diane Sweeney^
Cush Automotive	Dr. Ronald & Ruth Leonardi^	Dr. & Mrs. Andrew J. Viterbi
Charitable Foundation	Peter & Inge Manes^	Lewis & Lynn Warner^
John & Ann Davies	Mission Federal Credit Union	Jean & Timothy Weiss
Dean & Mrs. M. H. Dessent		

CRAIG NOEL CIRCLE (\$1,250 to \$2,499)

Anonymous (1)	Barbara & Dick Enberg^	Law Offices of Miller, Monson, Peshel, Polacek & Hoshaw
Mrs. Mary Thomas Adams	Ron & Sandy Erbeta	Judy & George Miller
Richard Adesso	Dieter & Susan Fischer/	Rena Minisi & Rich Paul
Dr. Tony & Sue Alessandra	Dieter's Mercedes Service	Drs. Patricia & Francis Montalbano
In Memory of Charles R. Allen	Hon. & Mrs. Charles W. Froehlich, Jr.	Harle Garth Montgomery^
Mr. & Mrs. Edward Andrade	Barbara & Albert Garlinghouse	Ruth & Jim Mulvaney
Atkins & Associates	Nancy Reed Gibson	Dr. Gail Naughton
Ms. Diana Barliant & Mr. Nowell Wisch^	Madeline L. & Milton D. Goldberg Family Foundation	Josiah & Rita Neeper
Dr. Chet Barta & Ms. Inge Lehman	Bud, Nancy & Rebecca Goodpasture	Katherine Newton
Melissa & Michael Bartell	John Greenbush & Dr. Marilyn Friesen	Jack O'Brien
Jack Benson	Sandra Gulden & Leon J. Goldberger	James & Claudia Prescott
Joan & Jeremy Berg	Gulden Private Foundation	Adm. Arthur & Peggy Price, Jr.
Paul Black^	Faye D. Gonzalez Foundation	Retract "A" Way
Cynthia Bolker & Greg Rizzi	Mrs. Cheryl Haimsohn	Roger & Christine Roberts^
Robert & Lillie Breitbard Foundation	Sheryl A. Harris^	Robert & Wanda Rose
Mr. & Mrs. Blaine A. Briggs	Arthur & Eleanor Herzman	Dr. H. Warren Ross
Arthur & Sophie Brody	Michelle Hetlinger^	Mrs. William C. Ruzich
Mrs. Jeanette Burnett	Mr. & Mrs. Leonard Hirsch^	Warren & Beverly Sanborn
Dr. & Mrs. Robert M. Callicott	Dr. David K. Hostetler	Craig & Laina Schechtman
Ruth Mary Picard Campbell	Paul & Brenda Hummell	Dr. Robert G. Seeman
Dr. & Mrs. Edgar Canada	Mrs. T. Bruce Iredale	Ms. Roberta Simpson^
Dr. & Mrs. Clifford W. Colwell	Alfred & Pat JaCoby^	Sky Vodka
Ms. Heidi Conlan/	Marge & Jerry Katleman^	Rodney & Dolores Smith
The Sahan Daywi Foundation	William & Edyth Kenton	Dotti & Joel Sollender^
R. Patrick & Sharon Connell	Beatrice & Irving Kern	Gail Squires & Yaman Sencan
Valerie & Harry Cooper^	Terri & Paul Kidd	Eugene L. & Hannah Step
Drew Corley & Jeremiah Maestas	Ken & Sheryl King^	Marc Tarasuck, AIA^
Richard & Stephanie Coutts	Dr. Ara & Sosi Klijian	Mr. & Mrs. Charles Taubman
Steve & Celeste Cowell	Phyllis & Martin Kornfeld^	Mrs. Claire Tavares
Susan B. Cowell^	Ledford Enterprises Inc.	Dixie & Ken Unruh^
Sid & Jenny Craig	Terry & Mary Lehr	Mr. & Mrs. Lawrence Veit
Mrs. Willard T. Cudney	Ms. Sherrill Leist	Doris & Lou Vettese
Dr. & Mrs. Francis C. Cushing^	Carl Levinger	Harvey & Jordine Von Wantoch^
Mr. Michael J. Cyszcz	Dr. & Mrs. Leeland Lovaas	John & Christy Walton
Darlene G. Davies	Tom Mabie & Rhonda Heth	Betty Jo & Hal Williams
in memory of Lowell Davies^	Mr. Robert E. Mackey, Jr.	Omar & Carol Winter
Desire Igual DeMontijo	Laura Martin	Ms. Julie Meier Wright
Pat & Dan Derbes	Elizabeth & Edward McIntyre	
Mrs. Phillip Hugh Dickinson		
Marion Eggertsen^		

^ Denotes Advisory Council Member

PREMIERE CIRCLE (\$1,000 to \$1,249)

Ken & Ginger Baldwin
Sally & John Berry
Charlotte & Charles Bird
William & Janice Bopp
Ken & Deni Carpenter
Judy & Tom Carter
Carol & Jeff Chang
James H. & Rita F. David
Dr. Charles C. & Sue K. Edwards
Ira & Noddy Epstein
Kenneth Fitzgerald
Karen & Orrin Gabsch
Teresa C. George
Martin & Enid Gleich

Geraldo & Scarrain Gomes
Norman & Valerie Jacobs Hapke
Sharon Lee Hudson
Richard & Janet Hunter
In Memory of Thelma Irwin
Mrs. Katherine Kaufman
Dr. & Mrs. James E. Lasry
Ms. Leah S. Liersch
Mr. Calvin Manning
Joseph L. Marshall &
Dr. Rosemari Marshall Johnson
Nathan & Sandy McCay
Mr. & Mrs. James S. Milch
David & Noreen Mulliken

Robert & Michele Nelson
Charles E. Noell
Tim & Leslie Paul
Paul & Katherine Ponganis
Gail Powell-Davis
Brenda Marsh-Rebello & John Rebello
William & Susane Roberts
Gwen Stoughton
Neil & Diane Swenson
The Tarlov Family
Gene & Celeste Trepte
Uncle Biff's California Killer Cookies
Laki & Carol Vassiliadis
Charles & Ruth Vorbach
Shirli Fabbri Weiss

PATRON MEMBERS (\$500 to \$999)

Elaine & Bob Algeo
Mrs. Milka Ambrus
Anonymous (4)
Susan Atkins
Mr. & Mrs. David A. Baer
Behind the Scenes
Catering & Event Management
Warren & Inez Bellows
Randall & Vivian Black
Drs. Gary & Barbara Blake
Mr. & Mrs. Robert H. Blayney
Joyce & Bob Blumberg
Bill & Rochelle Bold
Suzanne I. Bond
Ronda & Stanley Breitbard
Carol & Anthony Broad
Ted Bromfield, Esq.
Sandra & Harry Carter
Drs. Lynne M. Champagne & Wilfred Kears
Judith Clifton-Menzel
Steve & Carolyn Conner
Gordon F. Costine
Clif & Jane Cowgill
Donald J. Dalessio, M.D. &
Leanne MacDougall
Dr. & Mrs. William Davidson
Rick & Linda Dicker
Wes & Elaine Dillon
Dr. & Mrs. William R. Dito
Victor & Louise Engleman
Cary & Robert Estus
Esther & Robert Feier
Bruce & Patricia Fischer
Mary & David Fitz
Ms. Pat Frost
Bill & Judy Garrett
Drs. Thomas & Jane Gawronski

Carolyn Z. Gerganoff
Arthur & Judy Getis
Dr. & Mrs. Michael Goldbaum
The Golemb Family
Deni D. Goodman
Leonard & Barbara Gosink
Dr. & Mrs. William Gott
Carol & Don Green
Hawthorne Machinery Co.
James & Betty Hempstead
Kenneth E. & Dorothy V. Hill
Ken Hinckley
Alexa Kirkwood Hirsch
Nancy & Bill Homeyer
Drs. Andrew & Sonia Israel
ITLA Capital Corporation
Stephen & Pamela Kasbeer
Dr. & Mrs. Marvin Kripps
Bob & Laura Kyle
Georgie B. Leslie
Arthur & Sally Levinson
Mrs. Thelma Lindblade
Ernie & Sandy Lippe
Mr. & Mrs. Edward Lyon
Ms. Jo Bobbie MacConnell
Carl Maguire & Margaret Sheehan
Dr. Robert & Marcia Malkus
Wanda Alma Marosz
R.J. Maus, Architects
Mr. & Mrs. Gerald P. May, Jr.
Dr. & Mrs. M. Joseph McGreevy
Judith & Neil Morgan
Akiko Charlene Morimoto
Alan & Abby Murray
William E. & Lollie M. Nelson
Mrs. Audrey Newman
Willene D. Nichols

Rod & Barbara Orth
In Loving Memory of Martin B. Ortlieb
Sheila Palmer Design Associates
Ken D. Pischel, M.D. & Katherine Ozanich, M.D.
Roumania Rabinowitz
Tim Riley & Beth McGovern
Nancy J. Robertson
Roel Construction Company
Phoebe & David Sackett
Margery P. Schneider
Marilyn Schoepflin, Ph.D.
Barry & Janet Sharpless
Barry & Shannon Shelton
Mr. & Mrs. Randall Silvia
Marvin & Tina Simner
Herbert & Elene Solomon
Harold Stanley
Mr. Robert H. Stickel
Mrs. John R. Stitt
Mr. & Mrs. Harry Tennebaum
Charles B. Tesar, M.D.
Dr. Joseph Traube & Dr. Christine A. White
Daniel J. Travanti
Stephen & Greta Treadgold
Mrs. George G. Van Dyke
Will & Vanessa Van Loben Sels
Natalie C. Venezia & Paul A. Sager
Merle & Phil Wahl
Kenneth & Lorelei Warburton
Pitt & Virginia Warner
Mr. & Mrs. Michael Weaver
Kristine L. Wilkes
Dennis & Carol Wilson
Mr. & Mrs. Scott Wolfe
Bill & Heidi Woods
Susan Sincoff & Dr. Joseph Yedid
Mr. & Mrs. M. J. Zahnle

SPONSOR MEMBERS (\$250 to \$499)

A Bodywork Concept
Dan & Phyllis Epstein
Mr. Gale Acker & Dr. Nancy Acker
Mr. & Mrs. Sam Ackerman
Adams & Adams
Consulting & Training
B.J. & Sybil Adelson
Dr. & Mrs. Maurice Alfaro
Mrs. Janet Alliger
Mr. & Mrs. Glenn Alperstein
George Amerault
Anonymous (6)
Mike & Rhoda Auer
John Randolph Backman, M.D.
Mr. & Mrs. John E. Barbey, Jr.
Edie Barclay
Mrs. Ina S. Bartell
Richard & Linda Basinger
Brian Bazinet of Sysco Food Services
Bill & Sharon Beamer
Mr. Arthur R. Bell
Lee & Amnon Ben-Yehuda
Edgar & Julie Berner
Lanie & Lazare F. Bernhard
Mr. Cyrus Bharucha
Stanley & Betty Birstein
Gary Blache
Dennis Black & Associates
Robert Blanton & Ann Clark
Ms. Sheila M. Bobenhouse &
Mr. Jeffrey C. Truesdell
Ronald Brady
Mr. & Mrs. Henri Brandais
Dr. Andrew Breiterman
Marilynn Brown
Miriam Brownlee
Ruth Bunn
Clint & Susie Burdett
David Burns & Diane Lischio
Catherine & Herbert Buscher
Stuart & Joanne Butler
Beth & Tim Cann
Jane Carrigan
William & Shirley Carrington
Mr. & Mrs. David S. Casey, Jr.
Chris Cassapakis
Charlene Chatham
Woo Y. Choi
Mr. & Mrs. Henry B. Clark, Jr.
Aiden M. Clarke
Barry Clarkson
The Coffee Merchant, La Mesa
Frank Constantino
Mr. Ronald D. Culbertson
Butch & Marsha Culver
Ms. Frances Curtis
John Wm. Davis & William M. Hughes
Theodore E. Davis
Ms. Pauline des Granges
Ms. Lydia DiVincenzo
In Memory of Edith Dolnick
Paul & Kelly Dougherty
Mr. & Mrs. Glen Doughy
Bob & Lorrie Dunn
Hal & Jacque Eastman
Ms. Elizabeth Eldridge
Peggy Elliott
Dan & Phyllis Epstein
Lisa Erburu & M. Gocalis
Cary & Robin Eskow
Mr. Jesse Fadick
Donald & Patricia Falkner
Mr. & Mrs. William E. Fark
Dr. Susan Fee
Dr. Barry & Susan Fefferman
Mr. & Mrs. Robert Fei
Mr. & Mrs. Paul Ferraro
Richard & Donna Ferrier
Dr. & Mrs. Lawrence M. Fine
Fred & Shirley Fisher
Dr. & Mrs. Paul Friedman
Dr. & Mrs. Richard Friedman
Joseph & Annette Fritzenkotter
Hal & Pam Fuson
Bob & Deede Gales
Thomas & Robyn Geantil
Anne & John Gilchrist
Norman & Patricia Gillespie
Howard L. Gottlieb
Ms. Euvoughn L. Greenan
Vivienne D. Griffin
Mr. George Guerra
Dr. A.T. Hagler &
Ms. Martha Obermeier
Deborah A. Hammond
Robert W. & Helen M. Hammond
Robert & Helen Hansen
Jay & Mary Hanson
George D. Hardy
Mr. & Mrs. James Harris
Maurice & Elynor Hart
Mr. & Mrs. Leo J. Havilan
Dr. & Mrs. Jerome L. Heard
Matthew Heintschel
Dr. & Mrs. William E. Hendrix
Dr. & Mrs. C.R. Henkelmann
George Burke Hinman
Mr. & Mrs. Thomas O. Hippie
Mark & Lynn Hofflund
Paul & Anne Hofflund
Dr. & Mrs. John W. Holl
Mr. & Mrs. J. Leonard Holman
Peter D. Holt & Terry Usher Holt
Jean E. Holtz
Paul & Barbara Holz
Kendyl & Merri Houdyshell
Frederick M. Howden, M.D.
Susan D. Inot
Nancy & David James
Richard & Katherine Jarvis
In Memory of Donald Jenkins
Mr. & Mrs. William S. Johnston
Kenneth & Marilyn Jones
Drs. Irvin & Nancy Kaufman
Patricia & Alexander Kelley
Gerald A. Kelly/
The San Diego Foundation
Gerald A. Kelly Fund
Mr. & Mrs. Charles Kendall
Jennifer Kent
Patricia Kirk/Spin-Tek Systems
Mr. Phillip M. Klauber

Louis J. Knobbe
Leroy & Jo Ann Knutson
Curt & Nancy Koch
Marvin Krichman & Francy Starr
Inger & Kai Kristensen
John Q. Lalas, Jr.
Mr. Daniel La Marche
Dr. Eric Lasley
Lazzaro Construction
Dr. & Mrs. Dixon A. Lee
Jim & Veronica Lee
Dick & Sonie Lennon
Tom & Terry Lewis
Mr. & Mrs. James Lim
Don & Mary Jane Lincoln
Dr. Donald Lipkis & Ms. Arlene Pollard
Stan & Susan Loft
Mr. Mark C. Lorenzo
Charles & Robin Luby
Howard R. & Charlotte B. Lund
Sally & Bill Luster
Coralee V. Mackey
Mrs. Betty Joan Maly & John Meyers
Judge & Mrs. Frederick Mandabach
Cathie Marsh
Delza Martin
Mr. & Mrs. Richard F. Martin
Harold & Beverly Martyn
Cdr. & Mrs. John C. Mathews III
Chris Maxin &
Stephanie Buttell-Maxin
David McColl
Metropolis Furniture
James & Dorothy Mildice
Dr. Ronald H. Miller
Dr. & Mrs. Isaac Mizrahi
Ms. Connie Myers
Myriad Software
Dr. & Mrs. James H. Nelson
Niddrie & Hegemier LLP
Stephen Nielander & Dominique Alessio
Mrs. S. Falck Nielsen
Judge A. V. Nigro
Dr. & Mrs. Mike Nobil
Ray & Diane Nobis
Judge & Mrs. Paul Overton
Dr. Vic Pankey & Elena Pankey
Susan C. Parker
William & Sandra Peavey
Clifford T. Pentrack &
Mary E. Giovaniello
Mrs. Marion D. Perlman
Deborah Brooks Pettry
Marcia & Jim Piper
Poway Carpets
Drs. Julie Prazich & Sara Rosenthal
Bill & Judi Quiett
Anne F. Ratner
Jeffrey & Vivien Ressler
Ms. Kalpana Rhodes
Stuart Robinson
Beatrice Rotzow
Norman & Barbara Rozansky
Mrs. John M. Rumsey
Mr. & Mrs. Don R. Russell
Frank Ruyak
Joseph & Carol Sabatini
George & Karen Sachs
Edward & Rae Samiljan
Regina J. Schard
Mr. & Mrs. Arthur Schiff
Dr. & Mrs. Roger H. Schmitt
Linda J. Seifert
Jeffrey W. Selzer
Alice & Lew Silverberg
In Memory of
Edward Silverstein
Eunice M. Simmons, M.D.
Anne & Ronald Simon
Kathryn Slavin
Elbert & Maxine Smith
Dr. Timothy S. Smith
Ian Sokoloff
Mr. & Mrs. Fred C. Stalder
Kathleen Stephan
Sheila Stephan
Mr. & Mrs. Forrest Sterling
Mr. Edward Stickgold &
Mr. Steven Cande
Mr. & Mrs. Charles M. St. Laurent
Abbe & David Stutz
Mr. & Mrs. Ronald Styn
Mr. & Mrs. Raghu Sugavanam
Ms. O. Patricia Sullivan
Mrs. J. B. Swedelius
Eric Leighton Swenson
Dr. Blake S. & Mrs. Peggy Jean Talbot
Dr. Terry & Naomi Tanaka
Donald V. & Wynne Tartre
Dr. Marshall & Leila Taylor
Steven & Anoush Tencati
Betsy & Michael Thomas/
San Diego Area Postal Annex+
Ed & Barbara Thomas
Judge & Mrs. David R. Thompson
LL & Mrs. Jack E. Timmons
Dr. Richard Torchia &
Ms. Norinne McKinney
Robert C. & Melesse W. Traylor
Rose Marie N. True
Ms. C. Anne Turhollow
& Mr. Michael J. Perkins
Mr. & Mrs. Stan Ulrich
Ginny Unanue
Ann L. Walker
Mrs. Omar A. Walker
Kathy & Jim Waring
Jo & Howard Weiner
Mr. & Mrs. James D. Welterlen
Ross White
Michael & Penny Wilkes
Jerry R. Witt
Mr. & Mrs. John W. Witt
Perri Wittgrove
Kaye I. Wynne
Craig & Jennifer Zobelein
Vicky Zollweg & Michael Dunteman
Allan & Beverly Zukor/
Allan Zukor Advertising Design

This list current as of September 30, 2002

To become a member, please contact Diane Addis at (619) 231-1941, x2305.

CORPORATE LEADERS

EXECUTIVE LEADERS

American Airlines



Bank of America

BREAK-AWAY
Theatre Tours for Theatre People
Since 1971

CALIFORNIA BANK
TRUST

Continental
Airlines



Northern Trust

QUALCOMM

SAKS FIFTH AVENUE

Sempra Energy

Sheraton San Diego
HOTEL & MARINA

The San Diego
Union-Tribune

UNION
BANK OF
CALIFORNIA

WELLS
FARGO

LEADERS

Barney & Barney
Bertrand at Mister As
BRG Consulting
Chalone Wine Estates
City National Bank
Cush Automotive
Charitable Foundation
De Anza Hotel & Park

Fifth & Hawthorn
FloraStyle
Gad Shaanan Design
Goldman Ferguson Partners
Higgs, Fletcher & Mack, LLP
Home Box Office
ICON Systems, Inc.
Jaycraft Corporation

Kforce Professional Staffing
KPMG
Latham & Watkins
Marsh, Inc.
Merrill Lynch
Mervyn's
Mission Federal Credit Union
Neiman Marcus

Relocation Coordinators
San Diego National Bank
SBC/Pacific Bell
Scudder Private Investment Council
Stolper & Company
Investment Advisors
Target Stores
The T Sector
TK&A Custom Catering

Members of the Corporate Leaders enjoy exclusive benefits and recognition, especially the opportunity to entertain clients and employees with exclusive receptions in our Patron and Lipinsky Family Suites, behind-the-scenes tours, and preferred seating at our shows. For information, please contact Chris Graham at (619) 231-1941, ext. 2308.

THE CRAIG NOEL LEAGUE *Securing the future through planned gifts.*



"I want this theatre to have the security of an endowment so that we may continue to engage and inspire audiences for generations to come."
— CRAIG NOEL

The Craig Noel League was established in November 2000 to build the endowment and secure the legacy Craig Noel and countless others fashioned for The Globe Theatres. The League honors those thoughtful friends who help to secure our future through a gift by will or trust. Please join us in thanking these very generous friends who are helping to build the Craig Noel League.

CRAIG NOEL LEAGUE MEMBERS

Anonymous (9)
Nancine Belfiore
Stanley Nadel &
Cecilia Carrick
Garet and Wendy Clark
J. Dallas &
Mary H. Clark
Patricia W. Crigler, Ph.D.,
CAPT/USN/Ret.
Mrs. Philip H. Dickinson
Dr. & Mrs. Robert Epsten
Frank A. Frye, III
Marcy Goldstone
Kathryn Crippen Hattox

Barbara Iredale
Bob Jacobs
Joseph E. Jessop
J. Robert & Gladys H. King
Marilyn Kneeland
Jean & David Laing
Jerry Lester Foundation
Dr. Bernard Lipinsky*
Heather Manion
Calvin Manning
Paul I. & Margaret W. Meyer
Judy & George Miller
Steve Miller

Shirley Mulcahy
Laurie Dale Munday
Arthur & Marilyn Neumann
Craig Noel
Greg & Polly Noel
Jack O'Brien
PACEM (Pacific Academy
of Ecclesiastical Music)
Mrs. Margaret F. Peninger
Florence Borgeson
Plunkert*
Dolly & Jim Poet
Dorothy Shorb Prough*
Donald & Darlene Shiley

B. Sy & Ruth Ann Silver
John & Cindy Sorensen
Marje Spear
Nancy A. Spector &
Alan R. Spector
Eric Leighton Swenson
Anne C. Taubman
Marian Trevor (Mrs. Walter M.)*
Evelyn Mack Truitt
Harvey & Jordine
Von Wantoch
Sheryl & Harvey P. White
Mrs. Jack Galen Whitney
Julie Meier Wright
Carolyn Yorston

*Deceased

For more information on The Craig Noel League, please contact Brad Ballard at (619) 231-1941 x2309.

2002 BOARD OF DIRECTORS

DIRECTORS

Paul I. Meyer, President

Susan Major,
Executive Vice President
Lisa A. Barkett, Vice President
Elisabeth Bergan, Vice President
Karen Cohn, Vice President
Richard S. Coons, Vice President
David W. Down, Vice President
Thomas H. Insley, Treasurer
Sandra Redman, Secretary
Stephen L. Baum
Joseph Benoit
Samuel Brown
Mary N. Clendeninn
J. Dave Cours
Christopher L. Crockett
Bruce M. Dunlap
Christina L. Dyer
Sue Ebner
Bea Epsten
Robert H. Gleason
Lee Goldberg
Kathryn Hattox
Ronald Heller, M.D.
Kay Taylor Hopkins

Joseph E. Jessop, Jr.
Sheri Karpinski
Katherine Kennedy
Stephen M. Krant, M.D., F.A.C.S.
Sheila Lipinsky
Timothy A. MacDonald
Carlos Malamud
Jack McGrory
Steve Miller
Laurie D. Munday
Stanley M. Nadel, M.D.
Arthur H. Neumann
Robert L. Noble, A.I.A.
Steven H. Scheuer
Louis G. Spisto
Anne Taubman
Dean Thorp
Carol M. Veit
Patricia Weil
Harvey P. White
Julie Meier Wright
Carolyn Yorston
Tim K. Zinn

HONORARY DIRECTORS

Mrs. Richard C. Adams
Clair Burgener
Mrs. John H. Fox
Audrey Geisel
Paul Harter
Gordon Luce
Dolly Poet
Deborah Szekely
Hon. Pete Wilson

EMERITUS DIRECTORS

Garet B. Clark
J. Dallas Clark
Sister Sally Furay, R.S.C.J.
Bernard Lipinsky (1914-2001)
Delza Martin
Patsy Shumway

ADVISORY COUNCIL

Robert S. Albritton &
Georgie Leslie
Lawrence Alldredge &
Dawn Moore
Rich & Deavon Badami
Paul Black
Patricia Butler
Dallas & Mary Clark
Dr. & Mrs.
Edgar D. Canada
Steven J. Cologne
R. Patrick &
Sharon Connell
Valerie & Harry Cooper
Susan B. Cowell
Dr. & Mrs. Francis C.
Cushing, Jr.
Darlene G. Davies
Nina & Robert Doede
Bernard Eggertsen, M.D. &
Ms. Florence Nemkov
Marion M. Eggertsen
Barbara & Dick Enberg
Danah H. Fayman
Fifth & Hawthorn
Restaurant/Ed Nickelson &
Dave Witt
Susanna & Michael Flaster
Mary Ann & Arnold Ginnow
Sheryl A. Harris
Michelle Hetlinger
Leonard & Elaine Hirsch
Alfred & Pat JaCoby
Russell & Mary Johnson
Marge & Jerry Katleman
Bob & Gladys King

Ken & Sheryl King
Dr. Ara & Sosi Klijian
Phyllis & Martin Kornfeld
Ruth & Ronald G. Leonardi
Peter & Inge Manes
Bob Martinet/Susan Parkin
Dr. Marianne McDonald
Merrill Lynch/
Mr. Scott Wilson
Harle Garth Montgomery
Maria & Michael Morris
Neiman Marcus
Jane & Victor Ottenstein
James & Claudia Prescott
Bobbie & Blaine Quick
Jeannie & Arthur Rivkin
Mr. & Mrs. Roger Roberts
Dorothy & Joel Sollender
Gail Squires &
Yaman Sencan
Jeanette Stevens
Jay & Diane Sweeney
Marc Tarasuck, AIA
Harry & Selma Tennebaum
Evelyn Mack Truitt
Dixie & Ken Unruh
Jordine & Harvey
Von Wantoch
Lewis L. Warner
Omar & Carol Winter
June Yoder
Robert & Deborah Young

CURRENT AS OF OCTOBER 1, 2002

ENDOWMENT GIFTS *Supporting the theatre in perpetuity.*

The Globe Theatres has received gifts, dedicated to the endowment, from many generous supporters over the years. Just as past gifts to the endowment have helped to create the theatre and educational programs of today, continued support of the endowment will ensure a financially strong and artistically excellent Globe for tomorrow. Please join us in thanking these very special donors for their far-sighted support of The Globe Theatres.

Anonymous (2)
John A. Berol
Joe A. Callaway*
Dr. David & Ava Carmichael
Maria Carrera
J. Dallas & Mary H. Clark
In Memory of Lowell Davies
Morey & Jeanne Feldman
and Family

The Globe Guilders
Jim & Betty Hempstead
Hollis Foundation
Mrs. Anna P. Lord
National Endowment
for the Arts
Stephen Nielander &
Dominique Alessio
Mrs. Margaret F. Peninger

Florence Borgeson Plunkert*
Jessie W. Polinsky*
Jeannie & Arthur Rivkin
San Diego Trust and Savings
Mr. & Mrs. Gene Trepte

*Deceased

For more information, please contact the Planned Giving Department at (619) 231-1941.

The San Diego
Union-Tribune.

Dr. Seuss'
**How The
GRINCH
STOLE
CHRISTMAS!**

The Globe Theatres would like to give our heartfelt thanks
to two very special sponsors:

Bank of America, and Patsy & Forrest Shumway

Bank of America.

For many years, Bank of America has been a strong supporter and advocate of The Globe Theatres. Bruce Dunlap, Vice President of Bank of America Private Banking, currently sits on the Globe's Board of Directors. Many thanks to Bank of America as they remain one of The Globe Theatres most valued partners in our effort to provide incredible arts education opportunities.

Patsy & Forrest Shumway have been involved with The Globe Theatres as Season Sponsors, Production Sponsors, and generous contributors since the early eighties. Patsy served on the Globe's Board for six years before being elected a Director Emerita in 2000. We remain extremely grateful for the Shumways continued support over the years, and are pleased to recognize them as sponsors of Dr. Seuss' *How the Grinch Stole Christmas!*

PATRON INFORMATION

TICKET SERVICES

Hours
Mon: 10:00 am - 6:00 pm
Tues - Sat: 10:00 am - 8:30 pm
Sun: Noon - 8:30 pm
Closed Holidays
Phone
(619) 239-2255

ADMINISTRATION

Hours
Mon - Fri 9:00 am-5:00pm
Phone
(619) 231-1941
Address
The Globe Theatres
P.O. Box 122171
San Diego, CA 92112-2171

SEATING OF LATECOMERS

Although we understand parking is often at a premium, the seating of latecomers is extremely disruptive. Latecomers may be given alternative seating and will be seated at an appropriate interval.

YOUNG CHILDREN

Children under 3 years of age will not be admitted to performances.

ELECTRONIC DEVICES & CAMERAS

Use of recording devices and cameras is not permitted. If you are wearing a digital watch or pager, or if you are carrying a cellular phone, please silence it prior to entering the theater.

DIRECT EAR™ LISTENING SYSTEM

For the convenience of the hearing impaired, The Globe Theatres has installed the Direct Ear™ Listening System in the Old Globe Theatre. Lightweight headsets may be obtained from the house manager prior to performances. Direct Ear™ Listening System is provided courtesy of Sonus.

PUBLIC TOURS

Go behind the scenes at The Globe Theatres to learn about the history, three stages, shops and crafts areas. Open tours: most Saturdays and Sundays at 10:30 a.m. Groups by reservation. \$3 adults; \$1 seniors and students. Phone (619) 231-1941 for information/reservations.

The Globe Theatres accepts Visa, Discover, MasterCard, or American Express. Phone orders are subject to a \$6.00 per order service charge. Ticket exchanges are subject to a service charge. If you have moved, please notify the subscription office so records may be updated. Phone (619) 235-2250 during business hours or mail your change of address to the subscription office.

UNABLE TO ATTEND?

If you find you are unable to use your tickets, please give them to a friend or turn them in to the Box Office and receive a tax credit for your donation.

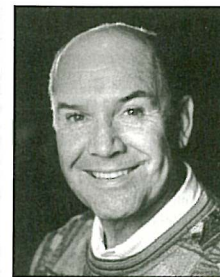
RESTROOMS AND TELEPHONES

Restrooms are located in the lower lobby of the Old Globe Theatre and adjacent to the Festival Theatre; pay phones may be found in the lower Globe lobby and next to the Gift Shop.

The Globe Theatres is supported in part by grants from the City of San Diego Commission for Arts and Culture, the California Arts Council, the County of San Diego and the National Endowment for the Arts; and is a constituent of the Theatre Communications Group and a member of the League of Resident Theatres and the San Diego Performing Arts League.

This theater operates under an agreement between the League of Resident Theatres and Actors' Equity Association, the union of professional actors and stage managers in the United States; and also under an agreement with the Society of Stage Directors and Choreographers (an independent, national labor union), and the International Alliance of Theatrical Stage Employees Local 122.

PROFILES



JACK O'BRIEN
Artistic Director

Recent Globe productions include *Imaginary Friends*, *Twelfth Night*, *The Full Monty*, *The Seagull*, *The Magic Fire*, *How the Grinch Stole Christmas!*, the world premieres of Associate Artist A.R. Gurney's *Labor Day* and Tina Howe's *Pride's Crossing*, as well as *Time and Again*, *The Doctor Is Out (Getting Away With Murder)* by Stephen Sondheim and George Furth, plus productions of *Henry IV*, *Much Ado About Nothing*, *Oleanna*, *Damn Yankees*, *King Lear*, *Ghosts*, *Hamlet*, *Uncle Vanya*, and world premieres of Terrence McNally's *Up in Saratoga*, A.R. Gurney's *The Snow Ball* and *The Cocktail Hour*, Tom Dulack's *Breaking Legs*, Stephen Metcalfe's *Emily*. ELSEWHERE: *Hairspray*, *The Invention of Love* (Tony nominations, best director and play), Lyceum, Lincoln Center Theater, *The Full Monty* (Tony nominations, best director and musical), Eugene O'Neill Theatre; *More to Love*; *Labor Day*, Manhattan Theatre Club; *St. Louis Woman*, City Center Encores!; *Pride's Crossing*, *The Little Foxes*, *Hapgood* (Lucille Lortel Award for Direction, 1995), Lincoln Center; *Damn Yankees* (Tony nomination, best musical revival) and *Two Shakespearean Actors* (Tony nominations, best director and play) on Broadway; *Porgy and Bess* for Houston Grand Opera and Broadway (Tony Award), as well as Radio City Music Hall; *The Magic Flute*, San Francisco Opera; *Tosca*, Santa Fe Opera; *Così fan Tutte* and *Aida*, Houston Grand Opera; *The Most Happy Fella*, Michigan Opera and Broadway. TV: *An Enemy of the People*, *All My Sons*, *I Never Sang for My Father*, *Painting Churches*, and *The Skin of Our Teeth*, all for PBS' *American Playhouse*. Mr. O'Brien is the recipient of the Drama League's Julia Hansen Award for Excellence in Directing, 2001. Member, College of Fellows of the American Theatre; Honorary Doctor of Humane Letters, University of San Diego.



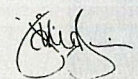
CRAIG NOEL
Artistic Director

Craig Noel was first appointed director in 1939, directing 15 productions prior to World War II. Since then has directed more than 221 plays of all styles and periods, and produced more than 365 (over 40 of which were directed by William Roesch from 1961 through 1976) His vision from the Globe during the past 60 years resulted in the establishment of the Shakespeare Festival in the late '40s, expansion to two theaters in the '50s, Globe Educational Tours in the '70s and Teatro Meta in the '80s. Among recent directorial assignments were *The Pavilion* and *Over the River and Through the Woods*. ELSEWHERE: during the 1940s, dialogue director, 20th Century Fox Studios; former director, Ernie Pyle Theatre, Tokyo. Honors include the Governor's Award for the Arts; the mayoral proclamation of "the Year of Craig Noel" (1987) in San Diego; inclusion in The San Diego Union's list of 25 persons who shaped San Diego; 1985 Outstanding Alumnus of the Year, SDSU; Honorary Doctor of Humane Letters, University of San Diego; a combined tribute from the Public Arts Advisory Council and San Diego County Board of Supervisors; the mayor's Living Treasure Award; Member, College of Fellows of the American Theatre.

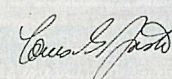
ASSOCIATE ARTISTS OF THE GLOBE THEATRES

In recognition of their unique contribution to the growth of the Globe Theatres and their special talent, we take great pride and pleasure in acknowledging as ASSOCIATE ARTISTS OF THE GLOBE, the following who have repeatedly demonstrated by their active presence on our stages and in our shops, that wherever else they may work, they remain the heart and soul of this theater.

- | | | |
|-----------------------|-------------------|--------------------|
| William Anton | Mark Harelik | Steven Rubin |
| Jacqueline Brookes | Bob James | Ken Ruta |
| Lewis Brown | Tom Lacy | Douglas W. Schmidt |
| Kandis Chappell | Diana Maddox | Seret Scott |
| George Deloy | Dakin Matthews | David F. Segal |
| Tim Donoghue | Deborah May | Don Sparks |
| Richard Easton | Katherine McGrath | David Ogden Stiers |
| Tovah Feldshuh | John McLain | Conrad Susa |
| Ralph Funicello | Jonathan McMurtry | Deborah Taylor |
| Lillian Garrett-Groag | Stephen Metcalfe | Sada Thompson |
| Harry Groener | Robert Morgan | Paxton Whitehead |
| A.R. Gurney | Steve Rankin | James R. Winker |
| Joseph Hardy | Marion Ross | Robert Wojewodski |



Jack O'Brien
Artistic Director



Louis G. Spisto
Executive Director



Craig Noel
Artistic Director

The Globe Theatres Staff

Jack O'Brien
Artistic Director

Louis G. Spisto
Executive Director

Craig Noel
Artistic Director

ADMINISTRATION

Executive Assistant.....June Andujar

ARTISTIC

Associate Artistic Director.....Karen Carpenter
Associate Director/Casting.....Brendon Fox
Literary Associate.....Raúl Moncada
Executive Assistant.....Lorraine Boyd
Company Manager.....Ellen Dieter
Dramaturgy Associate.....Diane Sinor
Literary Assistant.....Janet Hayatshahi

PROFESSIONAL TRAINING

Director.....Richard Seer
Voice/Speech.....Jan Gist
Program Coordinator.....Llance Bower
Production Coordinator.....Lyndsay Byrne

EDUCATION

Director.....Donna Marie Cory/Patti Saraniero
Tour Coordinator.....Holly Ward
Speakers Bureau Coordinator.....Carol Green
Teaching Artists.....Peter Cirino, Jonathan McMurtry
John Tessmer, Kim Walsh, Tony Ward

HUMAN RESOURCES

Interim Manager.....Cathy Zumberge
Human Resources Representative.....Karl Shapiro

BUSINESS

Director.....Ron Kolenic
Receptionist.....Lynn Dougherty

Finance

Accounting Supervisor.....Rita Edenfield
Accounting Assistant.....Jose Cortez
Accounting Assistant.....Diane Jenkins
Payroll Coordinator.....Cory Christensen

Information Systems

Manager.....Dean Yager
Assistant.....Thad Steffen

Maintenance

Building Manager.....Sean La Motte
Staff.....Violanda Corona, Ismael Delgado,
Humberto Elvira, Kevin Fleming,
David Gaspar, Roberto Gonzalez,
Margarita Meza, Jose Morales,
María Rios

DEVELOPMENT

Director.....Anita Dawson
Development Manager.....Robert Ford
Development Officer.....Brad Ballard
Associate Director, Individuals.....Dana C. Moore
Associate Director, Foundations.....Ann Marie Houghtaling
Associate Director, Corporations.....Chris Graham
Membership Administrator.....Diane Addis
Development Assistants.....Carolyn Reid,
Susan Linsert

Donor Services

Lipinsky Suite Concierges.....Stephen Serieka,
James Ferguson, Brett Young
V.I.P. Valet Attendants.....Jose Garcia,
Joshua Gibson, Kevin Tom, Brett Young

PRODUCTION

Director.....Robert Drake
Associate Director.....Debra Pratt Ballard
Production Coordinator.....Jan Burgoyne

Stage Management

Stage Managers.....D. Adams, Raúl Moncada
Assistant Stage Manager.....Tracy Skoczalas

Technical

Director.....Benjamin Thoron
Associate Director.....Christopher Morris
Shop Foreman/Master Carpenter.....Christian Thorsen
Master Carpenter, Festival Theatre.....Bob Dougherty
Flyman, Stage Carpenter, Globe.....Jim Masacek
Carpenters.....Forrest Aylsworth, David Berzansky,
Curt Carlsteen, Jeremiah Aldrich-Lutz,
Jim Hooper, Rogelio Rosales
Charge Carpenter, Carter.....Nick Fouch
Charge Scenic Artist.....Danny Griego
Assistant Scenic Artist.....Edee Armand, Ken Scar
Scenic Artist.....Marcella Lucenti,
Technical Assistant/Buyer.....Liz Eisele

Costumes

Director.....Stacy Sutton
Resident Design Assistant.....Charlotte Devaux Shields
Assistant to the Director.....Jennifer Hanson
Design Assistant.....Shelly Williams
Dyer/Painter.....K. Glee Brandon
Crafts Person.....Linda Black
Drapers.....Louise M. Herman, Chris Moad
Assistant Cutters.....Gloria Bradford, Anne Glidden Grace
Costume Assistant.....Mary Miller
Stitchers.....Samya Serougi, Sarah Wiley
Wig & Makeup Supervisor.....Molly O'Connor
Assistant Wig & Makeup Supervisor.....Kathleen Kurz
Head Dresser.....Beverly Boyd
Dressers and Running Crew.....Lisa Chan,
Michael Dondanville, Kate Harvey,
Tim Hooper, Kathleen Kurz, Angela Miller,
Rebecca Morgan, Sarah Stutler, Tracy Van Wyk
Rental Assistant.....Angela Land

Properties

Director.....Neil A. Holmes
Shop Foreman.....M.H. Schrenkeisen
Lead Craftsman.....Rory Murphy
Buyer.....Jennifer G. Brawn Gittings
Craftspersons.....Ryan Buckalew, Kristin Steva
Property Master, Globe.....Pat Cain
Property Master, Carter.....Kristine Hummel-Rosen

Lighting

Director.....David Lee Cuthbert
Assistant Director.....Kurt Doemelt
Master Electrician, Globe.....Tonnie Ficken
Master Electrician, Carter.....Jim Dodd
Master Electrician, Festival.....Kevin Liddell
Electricians.....Randy Anetsky, Jason Bieber,
Oliver Crockett, Todd Erickson,
Dean Estes, James Fienberg, Fred Holt,
Ryan Jordan, Josh Klem, Andy Lowe,
Megan Lujan, Brian Marz, Miranda Mikesch,
Che Miller, Leah Nelman, Travis Richardson,
Kathryn Roundtree, Stephen Schmitz,
Mira Suddarth, Brennan Taylor

Sound

Director.....Paul Peterson
Master Sound Technician, Globe.....Erik Carstensen
Master Sound Technician, Carter.....Aimée Garten
Mic Runner, Globe.....Jeremy Nelson

Security/Parking Services

Supervisor.....Rachel "Beahr" Garcia
Officers.....Ed Byrd, Rob Byrd,
Irene Herrig
Parking Attendants.....Roberto Almaquer,
Sherisa Ellisin, Deborah Elliot
Jane Geren, Elizabeth Johnson,
Cindy Reynolds

MARKETING

Director.....Nancy Higgins
Associate Director.....Michael Rennie
Public Relations Manager.....Becky Biegelsen
Marketing Coordinator.....Jessica Brodtkin
Intern.....Jeremiah Lowe
Production Photographers.....Craig Schwartz

Ticket Services

Associate Director of Sales.....Shamayne Hakim
Assistant Managers.....Tim Cole, Lisa Starace
Lead Ticket Services Representative.....Diana Sparta
Group Sales Coordinator.....Deborah Dimery
VIP Ticket Services Representative.....Amy Bristol
Staff.....Celeste Abbott, Lindsay Byrne,
Alexandra Cummings, John Donlon,
Elizabeth Everhart, Robert Fridenberg,
Mame Gile, Douglas Henderson,
Lindsay Little, Mary Jan Livensparger,
Jean McKissick, Cynthia Milligan,
Rebecca Smith, Diana Sparta,
Brittany Summers, Lora Tange,
Charmaine Taylor

Direct Sales/Telefunding

Assistant Manager.....Steven Kang
Shift Supervisors.....Dennis Dickens, Vaughn Rainwater
Patron Services Representative.....Tommy Thompson
Direct Sales Representatives.....Johanna Blackman,
Sarah Kirby, Jessica Morrow,
Samer Naoum, Maurice Samuels,
J.D. Smith, Esther Sundel

Patron Services

Theatre Manager.....Mike Callaway
House Managers.....Jay Maness, Anne Thacker,
Patrick Trotter
Food & Beverage Manager.....Dana Juhl
Pub Assistant Managers.....Roland Roberge,
Nicola Roberts
Pub Staff.....Rosemarie Brenneman,
Seth Munoz, Felicia Tobias
Gift Shop Supervisor.....Rose Espiritu

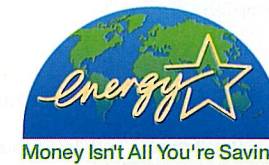
Pardee raises the bar. Again.

Pardee Homes is proud to be leading the industry in environmentally friendly building. As the first multi-regional builder in the country to commit to build 100% of its new homes in compliance with ENERGY STAR® standards, Pardee is also pleased to introduce an extraordinary array of environmentally sensitive features for its new home neighborhoods.

Our groundbreaking LivingSmart™ program, currently available in select neighborhoods,

conserves energy, reduces demand on precious natural resources and supports a healthier indoor environment. This means you can save money and the world around you — all while living comfortably within a finely crafted home.

While we've always been committed to building homes for the way you want to live, Pardee Homes has now added earth-friendly to our people-friendly equation, raising the bar on quality, again.



For more information, call (858) 794-2500 or visit us at www.pardeehomes.com.



THE WAY YOU WANT TO LIVE

 PardeeHomes.com