

THE GLOBE

theatres

SEPTEMBER - NOVEMBER 02



summerfestival
02

OLD GLOBE THEATRE

CASSIUS CARTER CENTRE STAGE

LOWELL DAVIES FESTIVAL THEATRE

Maybe the fountain of youth
isn't a fountain at all.



The all-new Audi A4 will make you feel like a kid again. The 1.8 T has a turbocharged 170 hp engine with enough get-up to straighten out the wrinkles around your eyes. And the new 3.0 has a potent 220 hp engine that'll propel you anywhere you want to go. Both cars are available with multitronic™ Continuously Variable Transmission for smoother, more efficient power* or the performance of our legendary quattro® all-wheel drive. It seems that turning back the hands of time has never been easier.



HOEHN AUDI
5215 Car Country
Carlsbad, CA
760-438-9490

METRO AUDI
1954 Kettner Blvd.
San Diego, CA
619-234-3661

MIRAMAR AUDI
9010 Miramar Road
San Diego, CA
858-578-8600

audiusa.com *Available only on FrontTrak vehicles. "Audi," "quattro," "A4" and the four rings emblem are registered trademarks and "multitronic" is a trademark of AUDI AG. ©2001 Audi of America, Inc. To find out more about Audi and for information regarding performance tires, call 1-800-FOR-AUDI.

THE
GLOBE
theatres



A Happy, Celebratory Summer to you all!

I always feel genuine pride at the range and excitement of the work the Globe manages to produce, season after season, and most especially during the height of our calendar year – the Festival, when the Lowell Davies Festival Theatre joins its two sisters in production.

This summer is rich beyond imagining, and we're so thrilled to have you be a part of it. Outside on the Festival Stage, this year's Tony Award®-winning director, John Rando, returns to us with his utterly original and imaginative *The Taming of the Shrew*. Few directors now working have a more wicked and controlled sense of comedy than John, and we're deeply proud to consider him a "home product." Another artist who has come into glorious maturity in our midst is the ever-surprising Seret Scott, who returns to the Carter with perhaps one of the most beautiful and haunting

plays recently written, *Faith Healer* by the great Irish dramatist, Brian Friel, who has had such resonant success in our theatres with others of his works. And finally, Richard Seer, whose work in the evolution of our Master of Fine Arts program has gained national stature, takes on the Old Globe itself to create a new production of Arthur Miller's moving *All My Sons*, a play of particular fondness for me, since I directed an American Playhouse television version of it in the late 80s. After the trauma of 9/11, we as an institution felt the need to make some statement of both determination and reassurance through our stages, and this production is the gesture we so fervently wished to make.

Theatre has power to stun, to amuse, and to compensate, and these three luminous productions are part of our continuing dialogue with you, our patrons. Thanks for the opportunity to interact with you once again!

Ever,

Jack O'Brien, Artistic Director



Even though the near-perfect weather in San Diego makes it seem like it's summer every day of the year, you can certainly distinguish when the season begins at the Globe by the influx of actors, designers, and artisans as well as the flurry of activity on our stages and in our shops and offices. While there certainly is never a dull moment at a theatre that annually presents 14 plays, there are many reasons why the summer is the most exciting time of the year at the Globe.

With all three of our theatres open, a mini "theatre district" is created in the heart of Balboa Park, where thousands of people gather each evening to experience some of the very best productions in the country. The number of theatres may not match those on Broadway or in London's West End, but the beautiful setting, electrifying atmosphere, and quality of the work rivals if not exceeds anything found in those other theatrical hubs.

And it's in the summer when some of the very best theatre artists in the world converge upon the Globe...and this summer is no exception. With *All My Sons*, we welcome back one of the Globe's favorite actors, Daniel J. Travanti, who was last seen in the Globe's critically-acclaimed production of *Old Wicked Songs*. We're also thrilled that Seret Scott, who most recently directed the 2001 production of *Crumbs from the Table of Joy*, has returned again to direct *Faith Healer* in the Cassius Carter Centre Stage. And we're very honored that John Rando – who just won the 2002 Tony Award for Best Director of a Musical – is in residence at the Globe (where he got his professional start!) to direct *The Taming of the Shrew*.

But of course, none of this would be possible without you – the audience. Your support allows us do the work we love to do, and there's nothing more rewarding than sharing it with the San Diego community. So, whether you're a long-time subscriber of the Globe or visiting for the very first time, we thank you for joining us tonight and being a part of the Globe's summer magic.

Sincerely,

Garet Clark, Interim Managing Director



Many of you have asked me, "How can I help save civilization?" Your being here is one good way, and we sincerely thank you for joining us.

There are many people whose contributions to this theatre over the years have made it possible for all of us to be here today.

Jack O'Brien, our Artistic Director for the past 20 years, is now recognized internationally as one of the premiere directors of our time. In New York last year, he was nominated for two Tony Awards as a director. In London, his production of our own *The Full Monty* has opened to rave "notices" from the normally understated Britons. If you haven't met Jack in person, please try to do so. He is dazzling - pure poetry.

Our Executive Director, Craig Noel, first came to the Globe 65 years ago, as an actor in 1937. He continues to play a major role in shaping our artistic seasons for us. Craig won't let us dwell on his illustrious past, however - not even on the Hollywood screen test he directed for the young actress Marilyn Monroe - because his own focus is consistently on the future. His wit, wisdom and foresight inspire us all.

Jack and Craig have now strengthened our artistic team even more, by adding Karen Carpenter to our fold as Associate Artistic Director. A dynamic artist who spent five years on the faculty of the Yale School of Drama, Karen is directing two plays for us this year - *Betrayal* and *Smash* - and has also been a wonderful guest speaker for our theatre on public radio and at the meetings of a number of organizations around town. If you're a member of a group whose meetings might be enlivened by Karen's energy and vision, please let us know.

Alongside Jack, Craig and Karen, an army of extraordinary people on our staff work day and night to bring our performances to you. You support their efforts through the simple act of purchasing a ticket. Those of us on the Board of the Theatre try to do so as well. We have recently launched a \$50,000,000 endowment and capital campaign, to which every Board member has committed meaningful support, to assure that this treasure of a place remains on sound footing for generations to come.

If you feel there is more you might want to do to keep this light of civilization shining brightly - whether by volunteering, introducing a friend to the Globe, making a membership contribution, or including the Globe in your estate plans - please call our Development office at (619) 231-1941. A little bit from a lot of people can sure make a dramatic difference.

And now, with our own contribution to civilization ready to unfold, let the play begin!

Paul I. Meyer

President, Board of Directors

2002 BOARD OF DIRECTORS

Paul Meyer.....President
Susan Major.....Executive Vice President
Lisa A. Barkett.....Vice President
Elisabeth Bergan.....Vice President
Karen Cohn.....Vice President
Richard S. Coons.....Vice President
David W. Down.....Vice President
Kathleen Healy.....Vice President
Thomas H. Insley.....Treasurer
Sandra Redman..... Secretary

Stephen L. Baum
Joseph Benoit
Samuel Brown
Mary N. Clendeninn
J. Dave Cours
Christopher L. Crockett
Patricia DeMarce
Bruce M. Dunlap
Sue Ebner
Bea Epsten
Robert H. Gleason
Lee Goldberg
Kathryn Hattox
Ronald Heller, M.D.
Joseph E. Jessop, Jr.
Sheri Karpinski
Katherine Kennedy
Stephen M. Krant, M.D., F.A.C.S.
Sheila Lipinsky
Timothy A. MacDonald
Carlos Malamud
Jack McGrory
Steve Miller
Laurie D. Munday
Stanley M. Nadel, M.D.
Arthur H. Neumann
Robert L. Noble, A.I.A.
Steven H. Scheuer
Anne Taubman
Dean Thorp
Howard G. Tirschwell, D.D.S.
Patricia Weil
Harvey P. White
Julie Meier Wright
Carolyn Yorston

DIRECTORS EMERITUS

Garet B. Clark
J. Dallas Clark
Sister Sally Furay, R.S.C.J.
Bernard Lipinsky (1914-2001)
Delza Martin
Patsy Shumway

HONORARY DIRECTORS

Mrs. Richard C. Adams
Clair Burgener
Mrs. John H. Fox
Audrey Geisel
Paul Harter
Gordon Luce
Dolly Poet
Deborah Szekely
Hon. Pete Wilson

Presents



BY

Brian Friel

SCENIC DESIGN
Robin Sanford
Roberts

COSTUME DESIGN
Lewis Brown⁺

LIGHTING DESIGN
David Lee
Cuthbert

SOUND DESIGN
Paul Peterson

VOICE & DIALECT COACH
Jan Gist

STAGE MANAGER
Raúl Moncada*

DIRECTED BY

Seret Scott⁺

This production is sponsored by:



Presented by Special Arrangement with Samuel French, Inc.

Casting by Liz Woodman, CSA & Brendon Fox

Artistic Director
Jack O'Brien

Interim Managing Director
Garet Clark

Executive Director
Craig Noel

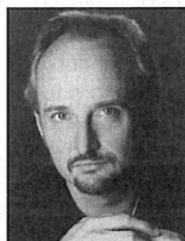
Cast of Characters

Frank.....Michael Rudko*
 Grace.....Lizbeth Mackay*
 Teddy.....Tim Donoghue*

There will be one 15-minute intermission.

"A myth consists of all its versions." – Claude Lévi-Strauss

PROFILES



Michael Rudko*
 (Frank)
 THE GLOBE
 THEATRES: Debut.
 BROADWAY: Gore

Vidal's *The Best Man*, *Timon of Athens*, *Serious Money*. OFF-BROADWAY: *Titus Andronicus*, *As You Like It*, *Love's Labour's Lost*, *Henry V*, *Henry VI*, *Measure for Measure*, *Slain in the Spirit*. REGIONAL: *Great Expectations*, Walnut Street Theatre; *Hedda Gabler*, The Shakespeare Theatre; *The Investigation*, *The Woman in Black*, *The Taming of the Shrew*, Center Stage; *The Winter's Tale*, Nebraska Shakespeare Festival; *Henry V*, *Richard III*, NJSF; *The Tempest*, Great Lakes Shakespeare Festival; *Hamlet*, *The Seagull*, *Hedda Gabler*, ART; *Crimes of the Heart*, Alabama Shakespeare Festival. Also, credits in London, including: *True West*, Donmar Warehouse; *Julius Caesar*, *Antony and Cleopatra*, Shakespeare's Globe.



Lizbeth Mackay*
 (Grace)
 THE GLOBE
 THEATRES:
 Debut. BROADWAY:

The Price (Drama Desk Award nomination), *The Heiress*, *Abe Lincoln in Illinois*, *Death and the Maiden*, *Crimes of the Heart* (Theatre World, DramaLogue and Outer Critics' Circle Awards). OFF-BROADWAY: *More Lies About Jerzy*, Vineyard Theatre; *Durang, Durang*, Manhattan Theatre Club; *The Seagull*, Theatre Three; *The Old Boy*, Second Stage; *Tales of the Lost Formicans*, Women's Project; *The Price of Fame*, Roundabout Theatre; *Kate's Diary*, *The Normal Heart*, Public Theatre. REGIONAL: *Betty's Summer Vacation*, Yale Repertory Theatre; *Toys in the Attic*, Berkshire Theatre Festival; *The Price*, Williamstown Theatre Festival; *Night Mother* (Elliot Norton Award), Foxborough Orpheum; *My Good Name*, Bay Street Theatre; *Six Characters in Search of an Author*, Actor's Theatre of Louisville; *The Heidi Chronicles*, Seattle Repertory Theatre. FILM: *One True Thing*, *Marvin's Room*, *In and Out*, *White Squall*, *Claire Dolan*, *Harvest*, *The Dream Team*, *Malcolm X*. TV: *The Education of Max Bickford*, *Ed*, *Law and Order*. Ms. Mackay is the recipient of a Fox Foundation Fellowship. EDUCATION: Ms. Mackay holds a BFA from Adelphi University and an MFA from the Yale School of Drama.



Tim Donoghue*
 Associate Artist
 (Teddy)
 THE GLOBE
 THEATRES:

Nixon's Nixon (also London's West End), *Bedroom Farce*, *The Boiler Room*, *Wonderful Tennessee*, *The White Rose*, *Love's Labour's Lost*, *Coriolanus*. REGIONAL: *The Waverly Gallery*, *As You Like It*, *Arsenic and Old Lace*, *The Show Off*, Long Wharf Theatre; *Art*, Cincinnati Playhouse; *Galileo*, Yale Rep; *Camping/Henry/Tom*, Stage West; *Jackie O's Glasses*, Westport Playhouse; *Sylvia*, Summer Circuit; *Later Life*, Buffalo Studio Arena; *Noises Off*, American Stage Festival; *Breaking the Silence*, Pasadena Playhouse; *The Show Off*, *Who's Afraid of Virginia Woolf?* Pittsburgh Public Theatre; *Driving Around the House*, South Coast Rep; *Wild Oats*, *American Clock*, Mark Taper Forum.

Brian Friel (Playwright)

Brian Friel wrote *The Enemy Within*, *Philadelphia, Here I Come!*, *The Loves of Cass McGuire*, *Lovers*, *Crystal and Fox*, *The Mundy Scheme*, *The Gentle Island*, *The Freedom of the City*, *Volunteers*, *Living Quarters*, *Aristocrats*, *Faith Healer*, *Translations*, a translation of *Three Sisters*, *The Communication Cord*, an adaptation of Turgenev's novel *Fathers and Sons*, *Making History*, *Dancing at Lughnasa*, *The London Vertigo*, an adaptation of *A Month in the Country*, *Wonderful Tennessee*, *Molly Sweeney*, *Give Me Your Answer, Do!*, and an adaptation of *Uncle Vanya*. *Dancing at Lughnasa* premiered at the Abbey Theatre, transferred to London's West End and then went to Broadway, where it won three 1992 Tony Awards, including Best Play. The play has been performed around the world, including national tours of Ireland, England and Australia. His plays have been performed extensively in Dublin at the Abbey, Gate and Olympia Theatres, and in many West End theatres in London. New York productions include *Philadelphia, Here I Come!*, *The Loves of Cass McGuire*, Helen Hayes; *The Mundy Scheme*, Theatre Royale; *The Freedom of the City*, Alvin; *Faith Healer*, Longacre; *Lovers*, Lincoln Center; *Aristocrats*, Manhattan Theatre Club; *Dancing at Lughnasa*, *Wonderful Tennessee*, *Translations*, Plymouth; and *Philadelphia, Here I Come!*, Roundabout. In 1992, *Faith Healer* was revived at the Royal Court in London; *Philadelphia, Here I Come!* was revived by King's Head Theatre, London and transferred to the Wyndham in the West End; and *A Month in the Country* opened at the Gate Theatre, Dublin. *Molly Sweeney* opened at the Gate Theatre and transferred to the Almeida Theatre in London prior to its Off-Broadway production at the Laura Pels/Roundabout Theatre. It has since been produced around the world. A festival of Mr. Friel's work was presented in Dublin and in New York as part of the Lincoln Center Festival. *Give Me Your Answer, Do!* premiered at The Abbey Theatre in

Dublin, was subsequently presented at the Hampstead Theatre in London, and had its New York premiere at the Roundabout Theatre. Mr. Friel's latest project, *Two Plays After (After Play and The Bear)* premiered at the Gate Theatre in Dublin and were also presented this year at Spoleto Festival USA. Born in Omagh, County Tyrone in Ireland in 1929, Mr. Friel began writing short stories for *The New Yorker* in 1959 and subsequently published two collections: *The Saucer of Larks* and *The Gold in the Sea*. His first radio plays were produced by the BBC, Belfast in 1958. In 1989, BBC Radio devoted a six-play season to his work, the first living playwright to be so distinguished. He co-founded Field Day Theatre Company in Derry, Ireland, where *Translations*, *The Communication Cord* and *Making History* premiered.

Seret Scott Associate Artist (Director)

THE GLOBE THEATRES: *Crumbs from the Table of Joy*, *The Trojan Women*, *Blues for an Alabama Sky*, *The Old Settler*, *Madame Mao's Memories*, *From the Mississippi Delta*. OFF-BROADWAY: New Victory Theatre, Second Stage Theatre, Young Playwright's Festival. REGIONAL: Credits at: Tribute Productions, D.C., Long Wharf Theatre, Buffalo Studio Arena, South Coast Rep, Oregon Shakespeare Festival, Yale Rep, Philadelphia Theatre Company, Crossroads Theatre, Center Stage in Baltimore, Studio Theatre, Washington D.C., American Stage Company, George Street Playhouse, Capitol Rep, Alliance Theatre, Humana Festival at Actor's Theatre of Louisville, Virginia Stage Company, New Mexico Rep, Alley Theatre, Naked Angels, UBU Rep, National Black Theatre, Ford's Theatre, as well as five seasons at Sundance Institute's Playwright's Lab. As an actress, Ms. Scott won a Drama Desk award on Broadway for her performance in *My Sister, My Sister*. She was nominated for a Connecticut

Critic's Award, a Beverly Hills NAACP Directing Award, and D.C.'s Helen Hayes Award. She was also the recipient of a TCG/PEW National Artist Residency Grant at the Long Wharf Theatre.

Robin Sanford Roberts (Scenic Design)

THE GLOBE THEATRES: *Betrayal*, *Da, Art*, *God's Man in Texas*, *Old Wicked Songs*, *Private Eyes*, *Collected Stories*, *Albee's People*, *The Old Settler*, *Scotland Road*, *Miracles*, *Sylvia*, *The Compleat Wrks of Willm Shkspr (Abridged)*, *Voir Dire*, *The Substance of Fire*, *Uncommon Players*, also, The Globe Galas for 1999, 2000, 2001, 2002. With The Globe Theatres/University of San Diego Professional Actor Training Program: *Love's Labour's Lost*, *Pericles*. BROADWAY: *It Ain't Nothin' but the Blues*. REGIONAL: *Working*, *The Merchant of Venice*, *The Beauty Queen of Leenane*, *Avenue X*, *It Ain't Nothin' but the Blues*, San Diego Rep; *Blues in the Night*, *Three Tall Women*, *California Schemin'*, Sacramento Theatre Company; *Waiting for Godot*, *Angels in America*, *Flesh and Blood*, Swine Palace Productions; *Three Mashas*, Telluride Theatre Festival; *Dixie Highway*, Hahn Cosmopolitan Theatre; *Dirigible*, Circle X Theatre. Additionally, Ms. Roberts was awarded a 1997 NEA/Theatre Communications Group Designer Fellowship. EDUCATION: Ms. Roberts received her MFA in Scenic Design from the University of California, San Diego and holds a Bachelor's Degree in Architecture from L.S.U.

Lewis Brown Associate Artist
(Costume Design)

THE GLOBE THEATRES: *Taming of the Shrew, God's Man in Texas, Henry V, The Merry Wives of Windsor, Cymbeline, Paramour, The Comedy of Errors, Henry IV, The Way of the World, The Merchant of Venice, Hamlet, Our Town, And a Nightingale Sang..., Measure for Measure, Coriolanus, Antony & Cleopatra, There's One in Every Marriage, Rashomon, Othello.* BROADWAY: *The Government Inspector, Mulebone.* REGIONAL: *The School for Scandal, Oregon Shakespeare Festival; The Tempest, The Caucasian Chalk Circle, Seattle Rep; 17 productions for The Guthrie Theatre; Kiss Me, Kate, My Fair Lady, Stratford Festival, Canada; Candide, Cyrano de Bergerac, Dream on Monkey Mountain, Idiot's Delight, Chemin de Fer, The Miser, Center Theatre Group; A Flea in Her Ear, ACT, San Francisco; The Matchmaker, Arizona Theatre Company.* Opera designs include: *Faust, Los Angeles Music Center Opera; Don Giovanni, Opera Theatre of St. Louis; La Fanciulla del West, Deutsch-Oper, Berlin.*

David Lee Cuthbert
(Lighting Designer)

Mr. Cuthbert is pleased to be making his Globe debut. Other recent designs include *A Feast of Fools* and *Diva* for the La Jolla Playhouse, *The Universal Monster Show, Richard III* and *The Ghost Sonata* for Sledgehammer Theatre, *Jaywalker* and *Zoot Suit* for San Diego Rep, *The Piano Lesson* and *Art* for San Jose Rep, *The Summer Moon* and *Tally's Folly* for A Contemporary Theater, and *The Countess* at South Coast Rep. National Tours include *The History (and Mystery) of the Universe*, and two tours with The New Pickle Circus. Internationally, David designed the 25th anniversary tour of *Terminal*, directed by Joseph Chaiken, which had it's world premier in Belgrade.

Paul Peterson
(Sound Design)

THE GLOBE THEATRES: *Smash, An Infinite Ache, Compleat Female Stage Beauty, Betrayal, The SantaLand Diaries, How The Grinch Stole Christmas!, The Pavilion, Enter the Guardsman, The Boswell Sisters, Vita and Virginia, The Countess, Crumbs from the Table of Joy, Orson's Shadow, God's Man in Texas, Travels with My Aunt.* He has also served as Assistant Sound Designer on over 30 productions. ELSEWHERE: *The Magic Fire, Milwaukee Rep; POP Tour (1999 & 2000), La Jolla Playhouse; Richard III, The Chairs, Demonology, Alice in Modernland, Sledgehammer Theatre; Forever Plaid, Backstage at Aubergine; also credits at L.A. TheatreWorks, San Diego Repertory Theatre, North Coast Repertory Theatre, Cape Fear Regional Theatre, Hope Summer Repertory Theatre, Malashock Dance & Company, The University of San Diego, San Diego State University, and the Freud Theatre at UCLA.* EDUCATION: Paul holds a BFA in Drama and Technical Design from San Diego State University. He also serves on the Professional Advisory Council for the Coronado School of the Arts and is a member of United Scenic Artists, Local 829.

Raúl Moncada*
(Stage Manager)

THE GLOBE THEATRES: Literary Associate (1994-present); Multicultural Program Associate (1985-1996); Teatro Meta Program Director (1985-1994); Stage Manager for more than 50 productions. PLAYWRIGHT: *Pastorela '91, Pastorela '92.* TRANSLATOR: *Ballad of the Blacksmith, La Fiaca, The Granny.* PRODUCER: Latino Play Discovery Series, Spanish Classics Street Theatrefest. ELSEWHERE: He has translated over 20 plays from Latin America, served as an on-site evaluator for the NEA since 1992; panelist for the Lila Wallace Reader's Digest Fund; script evaluator for Young Playwrights' Project; and member of the Partners of the Americas Cultural Committee. He has directed and stage managed at

Chicago's Second City and Ivanhoe Theatres, Arizona Theatre Company, New York's Spanish Repertory Theatre, Los Angeles' Twelfth Night Repertory Co. and other theaters across the country, and acted on stage and television in numerous productions, including *All in the Family, Hill Street Blues* and the PBS series *TNRC Presents* (Emmy Awards for Best Special, Best Ensemble.)

Jan Gist

(Voice & Dialect Coach)

Jan Gist has worked as a voice, speech, and dialect coach at theatres around the country, including: about 140 productions at the Alabama Shakespeare Festival, Oregon Shakespeare Festival, about 20 productions at Utah Shakespearean Festival, The Shakespeare Theatre, Arena Stage, Milwaukee Repertory Theatre and about 6 productions at PlayMakers' Repertory. Additionally, Ms. Gist has taught and lead workshops at universities such as Carnegie Mellon, Southern Methodist University, Actor's Theatre of Louisville and A.R.T., among others, including nine years at California State University Long Beach's Cal Rep, nine years at A.S.F.'s MFA Training program and currently works with The Globe Theatres Professional Actor Training Program in conjunction with USD. Gist holds a BFA from Carnegie Mellon University and a MFA from Wayne State University. Ms. Gist is an originating and published member of the Voice and Speech Trainers' Association.

Liz Woodman

(Casting)

THE GLOBE THEATRES: *Twelfth Night, Da, The Boswell Sisters, The Pavilion, Enter the Guardsman, A Midsummer Night's Dream, Art, Dinner with Friends, The Countess, Love's Labour's Lost, The Trojan Women, The Full Monty, God's Man in Texas, Orson's Shadow, Cymbeline, Things We Do for Love, Private Eyes, The Weir, Bedroom Farce, Blues for an Alabama Sky, Paramour, Romeo and*

Juliet, The Old Settler, Cowgirls, All in the Timing. ELSEWHERE: Ms. Woodman has cast many plays in New York from *Sugar Babies* to *Timon of Athens* (National Actors Theatre) to *Cowgirls*. She cast *Not About Nightingales* for Trevor Nunn in London and New York. Currently she's casting the national company of *The Full Monty* as well as the New York company, and *A Thousand Clowns* with Tom Selleck. REGIONAL: The Alley Theatre. FILM: *The Lunch Date* (Academy Award). TV: *Loving* (Artios nomination), *Another World, Texas Dottie.* MEMBERSHIPS: Casting Society of America, ATAS, League of Professional Theatre Women.

FOR THIS PRODUCTION

Additional Staff

Assistant Costume Design.....Shelly Williams
Production Assistant.....Michelle Cruz

Understudies

Frank.....Michael Kary
Grace.....Eleanor O'Brien
Teddy.....Christopher Gottschalk

+ Associate Artist of The Globe Theatres

* Member of Actors' Equity Association, the Union of Professional Actors and Stage Managers of the United States

ssdc The Director is a member of the Society of Stage Directors and Choreographers, an independent national labor union

The Scenic, Costume, Lighting, and Sound Designers in LORT Theatres are represented by United Scenic Artists Local USA-829, IATSE.



To sell or not to sell.
That is the question!

Susane
ROBERTS

In
Rancho Santa Fe,
Del Mar or La Jolla,
the answer is
Susane Roberts!

Chairman's Circle - Top 1% in USA

THE PRUDENTIAL
CALIFORNIA REALTY

1234 Camino del Mar
Del Mar, California 92014

858.755.6793

SUBSCRIBE
NOW!

THE
GLOBE
theatres

SUMMER
FESTIVAL

LOWELL DAVIES Lowell Davies Festival Theatre THEATRE LOWELL



Boisterous Comedy

Shakespeare's wickedly funny romance!

June 23 - Aug 4

BY WILLIAM SHAKESPEARE DIRECTED BY JOHN RANDO



PERICLES

High Adventure!

Follow the adventures of Prince Pericles. First time ever at the Globe!

Aug 25 - Oct 6

BY WILLIAM SHAKESPEARE DIRECTED BY DARKO TRESNJAK

OLD GLOBE THEATRE Old Globe Theatre GLOBE THEATRE OL



Classic Drama

War-time tragedy unmasks the passions and lies that bind two families.

July 21 - Aug 31

BY ARTHUR MILLER DIRECTED BY RICHARD SEER



IMAGINARY FRIENDS
A Play with Songs

World Premiere!

A smart, witty look at an imagined relationship between literary rivals Lillian Hellman & Mary McCarthy.

Sept 21 - Nov 3

BY NORA EPHRON

MUSIC BY MARVIN HAMLISCH LYRICS BY CRAIG CARNELIA

DIRECTED BY JACK O'BRIEN

CASSIUS CARTER Cassius Carter Centre Stage GE CASSIUS CAR



Con Man or Healer?

Classic story-telling from one of Ireland's finest playwrights. Beautiful, sad and poetic.

July 14 - Aug 25

BY BRIAN FRIEL DIRECTED BY SERET SCOTT



BEYOND THERAPY

Crazy for Love

This mismatched couple thinks therapy will save them, but look out for their therapists!

Sept 8 - Oct 20

BY CHRISTOPHER DURANG DIRECTED BY BRENDON FOX

For tickets and subscriptions call (619) 239-2255 BALBOA PARK, SAN DIEGO

www.theglobetheatres.org



LITE SUPPERS
\$14.50

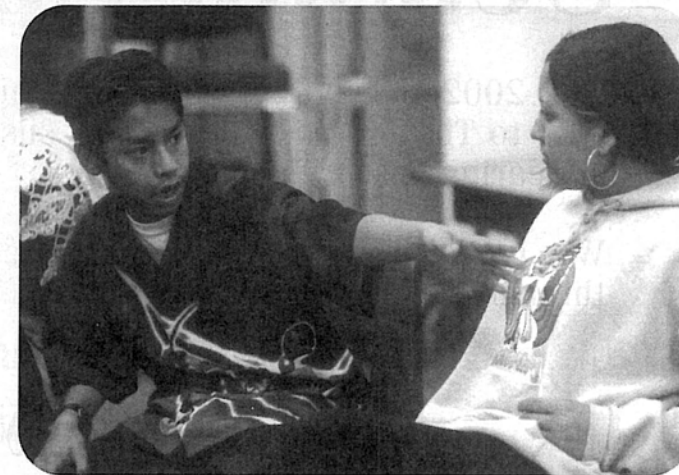
Fifth &
HAWTHORN
Restaurant

4 COURSE WINE
DINNERS
(INCLUDING A BOTTLE OF WINE)
\$46.95 per couple

4 BLOCKS FROM THE OLD GLOBE * 515 HAWTHORN ST (619) 544-0940

Education Programs

At The Globe Theatres, children and adults alike can enjoy our education programs



Teatro Meta participants at Roosevelt Middle School

Photo: Sandy Huffaker

PROGRAMS FOR YOUNG PEOPLE

Teatro Meta: This semester-long, bilingual (English and Spanish) program for middle and high school students is designed to help alleviate language difficulties, motivational problems, and negative attitudes. Each year over 400 students from San Diego County schools work with four bi-lingual teaching artists to develop scenes from their own original ideas and write and rehearse their scripts resulting in a performance in the Old Globe Theatre at an annual festival.

The Real Globe: This interactive summer program offers high school students from all across the United States a unique camp experience delving into Shakespeare and his work. The program culminates in a workshop production of a Shakespearean play. Scholarship assistance for camp tuition is available.

Playguides: A program that allows teachers to purchase discounted tickets to Globe productions, and brings the Playguides, a team of teaching artists, into the classroom to provide a live study guide for the play they will attend. Additionally, students participate in pre- and post-show discussions with actors and production staff.

THE
GLOBE
theatres

For more information about the Globe's Education Programs, please contact (619) 231-1941, x2141.

PROGRAMS FOR ADULTS

Insights Seminars: Take an in-depth look at the Globe's Season 2002 productions. Meet the artists and artisans involved in bringing each show to life on the Globe's stages. Seminars are free to Members and Subscribers (\$5 for the general public; \$2.50 for teachers and students).

Community Acting Classes: Whether you're a pro or a beginner, there's a course for you. Three times a year classes are offered for beginning, intermediate and advanced levels for adults 18 years old and above.

Behind-the-Scenes Tours: Discover how the magic is created with a behind-the-scenes tour of The Globe Theatres, including a backstage look at the Old Globe Theatre, the Cassius Carter Centre Stage and the Lowell Davies Festival Theatre. Also visit the Globe's renowned costume and scene shops, and much more. Group tours for students and/or adults by reservation most weekdays; walk-up tours 10:30am Saturdays and Sundays. (Cost: \$3 for adults; \$1 for students).



Coronado School of the Arts (CoSA)

a public school-within-a-school
located on the campus of Coronado High School.
Announces auditions and interviews
will begin in April for the 2002 - 2003 school year.

Call (619) 522-8969

- Pre-Professional Training: Instrumental Music • Musical Theatre
- Technical Theatre • Visual Art • Classical/Contemporary Dance
- College Preparatory Academics

Season Sponsors

Our 2002 Season Sponsors continue a tradition of generous gifts to The Globe Theatres that sustain and enhance the work appearing on our stages.

We gratefully acknowledge their longstanding leadership throughout the years.

The Lipinsky Family

Donald and Darlene Shiley

Anonymous

Sheryl and Harvey P. White

**WELLS
FARGO**

We are also grateful to our
2002 Media Sponsor:



is generously sponsored by
The Globe Guilders

The Festival 2002 production of *Faith Healer* is dedicated to the unparalleled support of our own Globe Guilders. The Globe Guilders have been an invaluable part of the Globe family since 1955. Now with over 500 dedicated members, their fund raising events (including their annual Oscar de la Renta Fashion Show), and their gracious hosting of the theatre's wonderful Company Calls provide some of the strongest support the theatre receives.

Their support has helped underwrite the theatre's award-winning education programs, such as The Real Globe, an intensive summer theatre camp for teens, and fund a special two-week training workshop in London for students in the Globe/USD Master of Fine Arts program. Prior production sponsorships include *Dinner with Friends*, *Over the River and Through the Woods*, *Cymbeline* and *Full Gallop*.

The Guilders remain a permanent connection to the Globe's magnificent past and play a vital role in its future. We truly appreciate everything the Guilders do on our behalf and are pleased to recognize them as a sponsor of this production.

Membership Makes It Happen

The Globe Theatres, the flagship of San Diego's performing arts community, maintains a long-standing reputation as a fiscally responsible non-profit business. The ability to uphold this standard, while keeping ticket prices affordable, is due in large part to the annual financial support of nearly 4,000 individuals, businesses and foundations. Please join us in giving a warm thanks and recognition to these leaders who have made tonight and many other performances possible. The Globe appreciates the support of those who have stepped into the spotlight.

DIAMOND CIRCLE (\$25,000 and above)

American Airlines	Audrey S. Geisel/The San Diego Foundation	Qualcomm, Inc.
American Express Company	Dr. Seuss Fund	Saks Fifth Avenue
AT&T	Globe Guilders	The San Diego Union-Tribune
Bank of America	Kathryn Hattox	Sempra Energy
John A. Berol	Joan & Irwin Jacobs	Sheraton San Diego Hotel & Marina
Break-Away Tours	Mr. & Mrs. Neil Kjos	Donald & Darlene Shiley
California Arts Council	Las Patronas	The Shubert Foundation
City of San Diego, Commission for Arts and Culture	The Lipinsky Family	Patsy & Forrest Shumway
J. Dallas & Mary H. Clark Fund of The San Diego Foundation	Dr. Marianne McDonald	Gaby & Rich Sulpizio
Karen & Donald Cohn	Northern Trust Bank	Mandell Weiss Charitable Trust
Continental Airlines	Mr. & Mrs. Victor H. Ottenstein	Union Bank of California
County of San Diego	The Parker Foundation (Gerald & Inez Grant Parker)	Wells Fargo
		Sheryl & Harvey P. White

GOLD CIRCLE (\$10,000 to \$24,999)

Lisa & Steve Altman	Lee & Frank Goldberg	San Diego National Bank
Anonymous (1)	Kathleen Healy	SBC/Pacific Bell
A.T. Kearney Executive Search	Dr. Ronald & Susan Heller and Family	The Steven H. & Alida Brill Scheuer Foundation
Mr. & Mrs. William J. Barkett	Deni & Jeff Jacobs	Target Stores/Mervyn's
Elisabeth & John Bergan	Joseph E. Jessop, Jr.	Anne Taubman & David Boyle
Teresa & Tom Bernard	Katherine Kennedy/Relocation Coordinates	Mrs. Walter M. Trevor
Cartier, La Jolla California	KPMG	Viewpoint Investment Partners
California Bank & Trust	Marsh, Inc.	Patricia & Christopher Weil Family Foundation
The Louis Yager Cantwell Private Foundation Trust	Bob Martinet	Weingart-Price Fund of The San Diego Foundation
Neil & Mary Clendeninn	Paul & Maggie Meyer/Latham & Watkins	Stanley E. Willis II
J. Dave Cours/ICON Systems, Inc.	Laurie D. Munday	Carolyn W. Yorston
De Anza Hotel & Park	John & Laura Robbins	
Mr. & Mrs. Brian Devine		
Dr. Robert and Bea Epsten		

SILVER CIRCLE (\$7,500 to \$9,999)

Cecilia Carrick & Stan Nadel	Ms. Jeanette Stevens	Evelyn Mack Truitt
------------------------------	----------------------	--------------------

FOUNDER CIRCLE (\$5,000 to \$7,499)

Anonymous (2)	Higgs, Fletcher & Mack, LLP	Pratt Memorial Fund
Nina & Robert Doede	Dr. & Mrs. Harry F. Hixson, Jr.	Allison & Robert Price
Evans Hotels	Melissa & James Hoffmann	Ellen C. Revelle
Mrs. Danah H. Fayman	Wanda & Tom Insley	Jeannie & Arthur Rivkin
Fifth & Hawthorn	Dr. & Mrs. Stephen M. Krant	Harold R. Stern
Susanna & Michael Flaster	Maurice J. Masserini Charitable Trust, Wells Fargo Trustee	Deborah Szekely
Mrs. John H. Fox	Merrill Lynch	Time Warner Cable
Arnold & Mary Ann Ginnow	Money/Arenz Foundation, Inc.	TK&A Custom Catering
Robert Gleason & Marc Matys	photofolks.com	Laurie & Brent Woods
Alice B. Hayes		Mrs. June Yoder
		Zurich Scudder Investments

CLINT EASTWOOD BLOOD WORK

THE KEY TO CATCHING A KILLER IS ONLY A HEARTBEAT AWAY

WARNER BROS. PICTURES Presents
A MALPASO Production CLINT EASTWOOD "BLOOD WORK" JEFF DANIELS WANDA DE JESUS TINA LIFFORD PAUL RODRIGUEZ DYLAN WALSH and ANJELICA HUSTON
Edited by JOEL COX Production Designed by HENRY BUMSTEAD Director of Photography TOM STERN Music by LENNIE NIEHAUS Co-Producer JUDIE C. HOYT Executive Producer ROBERT LORENZ
Based on the novel by MICHAEL CONNELLY Screenplay by BRIAN HELGELAND Produced and Directed by CLINT EASTWOOD



WWW.BLOODWORKMOVIE.COM AMERICA ONLINE KEYWORD: BLOOD WORK



AUGUST 9

theatre goer

The best of the West End: shows, celebrities and theatre news

LONDON

Man of manners

AWARD-WINNING DIRECTOR OF THE FILMS *Topsy-Turvy* and *Secrets and Lies*, Mike Leigh first caught the British public's attention with his 1977 play of aspirant middle-class manners, *Abigail's Party*, which has now returned to its original London theatre. In the current issue of *theatre goer*, Mike talks about the dying art of improvised film and stage work.



CAMERA PRESS

Hall of fame

Ed Hall is gaining a reputation as one of the UK's most talented theatre directors, with his recent reworking of Shakespeare's *Henry VI* plays – *Rose Rage* – winning critical acclaim.

Bryonie's bars

Stricken with a cold, *theatre goer's* Bryonie Hollaert checks out West End bar Digress and finds that medicine is at hand in the form of a citrus-loaded Soho Sling. She leaves the establishment feeling fighting fit!

One to watch

Despite making a splash playing Boy George in the '80s-set flamboyant musical *Taboo*, Scotsman Euan Morton says he'll be relieved to get out of the platform soles and make-up.



DAVID J. PHILLIPS



Cabaret star

CATAPULTED INTO THE LIMELIGHT WHILE UNDERSTUDYING and later playing the lead in the hugely successful National Theatre production of *My Fair Lady*, Alexandra Jay is now donning bowler hat and fishnets to play Sally Bowles in *Cabaret* at the Chichester Festival Theatre. The bubbly 19-year-old talks about the challenges involved in playing one of musical theatre's most demanding female roles.

GET the VERY BEST of London's West End delivered to your door every month!



- *theatre goer* magazine brings you all the glamour and grandeur of theatreland, London's West End
- Each month, *theatre goer* magazine brings you the complete world of West End theatre – the musicals, the plays, the people and the parties
- *theatre goer* even gives you insight into the best places to eat and drink in London, with exclusive restaurant reviews
- Seeing London theatre has never been easier...

theatre goer is published in the UK in association with Andrew Lloyd Webber's Really Useful Group and is THE ONLY magazine dedicated to bringing you the very best of London's theatre!

Special Introductory Offer for New US Subscribers! six issues for just \$37.95



To subscribe or for more information, call our TOLL FREE NUMBER 1-888-221-4194 or visit our website at www.theatre goer.net

PLAYWRIGHT CIRCLE (\$2,500 to \$4,999)

Dr. & Mrs. Wayne Akeson
Robert S. Albritton
Lawrence G. Alldredge
Jan & Rich Baldwin/
Nth Generation Computing Inc.
Barney & Barney
Mr. & Mrs. James W. Bastien
Bertrand at Mister A's
BRG Consulting
City National Bank
Cush Automotive
Charitable Foundation
John & Ann Davies
Dean & Mrs. M. H. Dessent
Bernard J. Eggertsen
& Florence Nemkov

FloraStyle
Gad Shaanan Design
Martha & George Gafford
Rita C. Grady
Fred & Alicia Hallett
Home Box Office
Mary & Russell Johnson
Dr. & Mrs. Richard L. Kahler
Bob & Gladys King
Dr. Ronald & Ruth Leonardi
Peter & Inge Manes
Mr. Steve Miller
Mission Federal Credit Union
Maria & Michael Morris
Motivational Systems
Arthur & Marilyn Neumann

Michael Nova,
Kristie Connell, Evan Nova
Mrs. Margaret F. Peninger
Dolly & Jim Poet
Mr. & Mrs. Blaine Quick
Mr. & Mrs. Jeremiah B. Robins
The San Diego Foundation
Stolper & Company
Investment Advisors
Jay & Diane Sweeney
U.S. Bancorp Foundation
Dr. & Mrs. Andrew J. Viterbi
Lewis & Lynn Warner
Jean & Timothy Weiss

CRAIG NOEL CIRCLE (\$1,250 to \$2,499)

Anonymous (1)
Mrs. Mary Thomas Adams
Richard Adesso
Dr. Tony & Sue Alessandra
In Memory of Charles R. Allen
Mr. & Mrs. Edward Andrade
Ms. Diana Barliant & Mr. Nowell Wisch
Dr. Chet Barta & Ms. Inge Lehman
Melissa & Michael Bartell
Joan & Jeremy Berg
Paul & Katherine Black
Cynthia Bolker & Greg Rizzi
Robert & Lillie Breitbard Foundation
Mr. & Mrs. Blaine A. Briggs
Arthur & Sophie Brody
Jeanette & Bill Burnett
Dr. & Mrs. Robert M. Callicott
Ruth Mary Picard Campbell
Dr. & Mrs. Edgar Canada
Linda Carozza &
Dr. Michael Channick
Garet & Wendy Clark
Dr. & Mrs. Clifford W. Colwell
Ms. Heidi Conlan/
The Sahar Daywi Foundation
R. Patrick & Sharon Connell
Valerie & Harry Cooper
Drew Corley & Jeremiah Maestas
Richard & Stephanie Coutts
Steve & Celeste Cowell
Sid & Jenny Craig
Mrs. Willard T. Cudney
Francis & Ruthie Cushing
Mr. Michael J. Czynsz
In Memory of Lowell Davies
Desire Iguar DeMontijo

Pat & Dan Derbes
Mrs. Philip Hugh Dickinson
Marion Eggertsen
Barbara & Dick Enberg
Ron & Sandy Erbetta
Dieter & Susan Fischer/
Dieter's Mercedes Service
Hon. & Mrs. Charles W. Froehlich, Jr.
Barbara & Albert Garlinghouse
Nancy Reed Gibson
Madeline L. & Milton D. Goldberg
Family Foundation
John Greenbush &
Dr. Marilyn Friesen
Sandra Gulden & Leon J. Goldberger
Gulden Private Foundation
Faye D. Gonzalez Foundation
Mrs. Cheryl Haimsohn
Arthur & Eleanor Herzman
Michelle Hetlinger
Dr. David K. Hostetler
Paul & Brenda Hummell
Mrs. T. Bruce Iredale
Marge & Jerry Katleman
Beatrice & Irving Kern
Terri & Paul Kidd
Kenneth & Sheryl S. King
Dr. Ara & Sosi Klijian
Phyllis & Martin Kornfeld
Terry & Mary Lehr
Dr. & Mrs. Leeland Lovaas
Tom Mabie & Rhonda Heth
Mr. Robert E. Mackey, Jr.
Drs. Laura & Warren Martin
Elizabeth & Edward McIntyre
Judy & George Miller

Rena Minisi & Rich Paul
Drs. Patricia & Francis Montalbano
Harle Garth Montgomery
Ruth & Jim Mulvaney
Dr. Gail Naughton
Josiah & Rita Neeper
Katherine Newton
Jack O'Brien
James & Claudia Prescott
RAdm. Arthur & Peggy Price, Jr.
Mrs. Dorothy Prough
Retract "A" Way
Roger & Christine Roberts
Robert & Wanda Rose
Dr. H. Warren Ross
Mrs. William C. Ruzich
Warren & Beverly Sanborn
Craig & Laina Schechtman
Dr. Robert G. Seeman
Ms. Roberta Simpson
Rodney & Dolores Smjth
Gail Squires & Yaman Sencan
Eugene L. & Hannah Step
Marc Tarasuck, AIA
Mrs. Claire Tavares
Howard G. Tirschwell, D.D.S.
& Mrs. Cherie Halladay
Dixie & Ken Unruh
Mr. & Mrs. Lawrence Veit
Doris & Lou Vettese
Harvey & Jordine Von Wantoch
John & Christy Walton
Betty Jo & Hal Williams
Omar & Carol Winter
Ms. Julie Meier Wright

PREMIERE CIRCLE (\$1,000 to \$1,249)

Charles & Virginia Alexander
Ken & Ginger Baldwin
Dr. & Mrs. John A. Berger
Sally & John Berry
Charlotte & Charles Bird
Ken & Deni Carpenter
Judy & Tom Carter
Carol & Rudy Cesena
Carol & Jeff Chang
James H. & Rita F. David
Dr. Charles C. & Sue K. Edwards
Kenneth Fitzgerald
Karen & Orrin Gabsch
Elaine & Murray Galinson
Teresa C. George
Martin & Enid Gleich
Geraldo & Scarrain Gomes
Bud, Nancy, & Rebecca Goodpasture

Norman & Valerie Jacobs Hapke
Dr. Alan D. & Mrs. Sheryl A. Harris
Richard & Janet Hunter
In Memory of Thelma Irwin
Alfred & Pat JaCoby
Mr. & Mrs. Julian M. Kaufman
William & Edythe Kenton
Dr. & Mrs. James E. Lasry
Ms. Leah S. Liersch
Mr. Calvin Manning
Joseph L. Marshall &
Dr. Rosemari Marshall Johnson
Nathan & Sandy McCay
Charles & Pamela McPherron
Mr. & Mrs. James S. Milch
David & Noreen Mulliken
Robert & Michele Nelson

Charles E. Noell
Tim & Leslie Paul
Paul & Katherine Ponganis
Gail Powell-Davis
Dr. & Mrs. Ernest E. Pund, Jr.
Brenda Marsh-Rebello & John Rebello
William & Susane Roberts
Dotti & Joel Sollender
Gwen Stoughton
Neil & Diane Swenson
The Tarlov Family
Gene & Celeste Trepte
Uncle Biff's California Killer Cookies
Charles & Ruth Vorbach
Shirli Fabbri Weiss
Mr & Mrs. Tim Zinn

PATRON MEMBERS (\$500- \$999)

Elaine & Bob Algeo
Mrs. Milka Ambrus
Anonymous (3)
Behind the Scenes
Catering & Event Management
Warren & Inez Bellows
Drs. Gary & Barbara Blake
Joyce & Bob Blumberg
Bill & Rochelle Bold
Suzanne I. Bond
Ronda & Stanley Breitbart
Carol & Anthony Broad
Ted Bromfield, Esq.
Sandra & Harry Carter
Harry & Carol Cebron
Lynne M. Champagne, M.D.
Judith Clifton-Menzel
Steve & Carolyn Conner
Gordon F. Costine
Cliff & Jane Cowgill
Mr. & Mrs. Gary E. Curtis
Ms. Alice Dadourian
Donald J. Dalessio, M.D. &
Leanne MacDougall
Dr. & Mrs. William Davidson
Rick & Linda Dicker
Wes & Elaine Dillon
Dr. & Mrs. William R. Dito
Sylvia Dreyfuss/LABS, Inc.
Victor & Louise Engleman
Mr. & Mrs. Ira Epstein
Cary & Robert Estus
Esther & Robert Feier
Mary & David Fitz
Ms. Pat Frost
Bill & Judy Garrett
Drs. Thomas & Jane Gawronski
Carolyn Z. Gerganoff
Arthur & Judy Getis
Dr. & Mrs. Michael Goldbaum

The Golemb Family
Deni D. Goodman
Leonard & Barbara Gosink
Dr. & Mrs. William Gott
Carol & Don Green
Hawthorne Machinery Co.
James & Betty Hempstead
Mr. & Mrs. Arnold Hess
Kenneth E. & Dorothy V. Hill
Ken Hinckley
Alexa Kirkwood Hirsch
Mr. & Mrs. Leonard Hirsch
Nancy & Bill Homeyer
Drs. Andrew & Sonia Israel
ITLA Capital Corporation
Stephen & Pamela Kasbeer
Dr. & Mrs. Marvin Kripps
Bob & Laura Kyle
Paul K. Laikind
Georgie B. Leslie
Mrs. Thelma Lindblade
Stan & Susan Loft
Ms. Jo Bobbie MacConnell
Carl Maguire & Margaret Sheehan
Dr. Robert & Marcia Malkus
Charlie & Jackie Mann
Wanda Alma Marosz
R.J. Maus, Architects
Mr. & Mrs. Gerald P. May, Jr.
Dr. & Mrs. M. Joseph McGreevy
Elizabeth & Louis Meyer
Judith & Neil Morgan
Akiko Charlene Morimoto
Alan & Abby Murray
Mrs. Audrey Newman
Stephen B. Nielander & Dominique K. Alessio
Mrs. S. Falck Nielsen
in loving memory of Mr. Nielsen
E. H. "Obie" O'Bryant
Rod & Barbara Orth

In Loving Memory of Martin B. Ortlieb
Sheila Palmer Design Associates
Ken D. Pischel, M.D. & Katherine Ozanich, M.D.
Dr. Julie Prazich & Dr. Sara Rosenthal
Roumania Rabinowitz
Margot Reinke
Tim Riley & Beth McGovern
Nancy J. Robertson
Roel Construction Company
Phoebe & David Sackett
Margery P. Schneider
Marillies Schoepflin, PhD.
Barry & Janet Sharpless
Barry & Shannon Shelton
Mr. & Mrs. Randall Silvia
Marvin & Tina Simmer
Herbert & Elene Solomon
Harold Stanley
Mr. Robert H. Stickel
Mrs. John R. Stitt
Mr. & Mrs. Harry Tennebaum
Charles B. Tesar, M.D.
Sheri Thurner
Dr. Joseph Traube & Dr. Christine A. White
Stephen & Greta Treadgold
Mrs. George G. Van Dyke
Will & Vanessa Van Loben Sels
Laki & Carol Vassiliadis
Natalie C. Venezia & Paul A. Sager
Merle & Phil Wahl
Kenneth & Lorelei Warburton
Pitt & Virginia Warner
Mr. & Mrs. Michael Weaver
Kristine L. Wilkes
Dennis & Carol Wilson
Mr. & Mrs. Scott Wolfe
Dr. Joseph Yedid & Susan Simcoff
Mr. & Mrs. M. J. Zahnle

SPONSOR MEMBERS (\$250 to \$499)

A Bodywork Concept
A-Star Staffing
Mr. Gale Acker & Dr. Nancy Acker
Mr. & Mrs. Sam Ackerman
Adams & Adams
Consulting & Training
B.J. & Sybil Adelson
Dr. & Mrs. Maurice Alfaro
Mrs. Janet Alliger
Mr. & Mrs. Glenn Alperstein
George Amerault
Anonymous (5)
Stacy Rene Arthur
Mike & Rhoda Auer
John Randolph Backman, M.D.
Mr. & Mrs. David A. Baer
Mr. & Mrs. John E. Barbey, Jr.
Eddie Barclay
Mrs. Ina S. Bartell
Richard & Linda Basinger
Brian Bazinet of Sysco Food Services
Bill & Sharon Beamer
Mr. Arthur R. Bell
Lee & Amnon Ben-Yehuda
Lanie & Lazare F. Bernhardt
Mr. Cyrus Bharucha
Stanley & Betty Birstein
Drs. Gordon & Karen Bishop/
The New School of Architecture
Gary Blache
Dennis Black & Associates
Robert Blanton & Ann Clark
Mr. & Mrs. Robert H. Blayney
Ms. Sheila M. Bobenhouse &
Mr. Jeffrey C. Truesdell
William & Janice Bopp
Ronald Brady
Mr. & Mrs. Henri Brandais
Andrew C. Breiterman, M.D.
Steven Briggs
Marilynn Brown
Miriam Brownlee
Clint & Susie Burdett
David Burns & Diane Lischio
Catherine & Herbert Buscher
John & Kirk Butler
Stuart & Joanne Butler
Jane Carrigan
Mr. & Mrs. David S. Casey, Jr.
Chris Cassapakis
Charlene Chatham
Paul & Mrs. Henry B. Clark, Jr.
Aiden M. Clarke
Barry Clarkson
The Coffee Merchant, La Mesa
Frank Constantino
Mrs. Susan B. Cowell
Mr. Ronald D. Culbertson
Butch & Marsha Culver
John Wm. Davis & William M. Hughes
Theodore E. Davis
Ms. Pauline des Granges
Ms. Lydia DiVincenzo
In Memory of Edith Dolnick
Paul & Kelly Dougherty
Mr. & Mrs. Glen Doughty
Leon Drew

Bob & Lorrie Dunn
Hal & Jacque Eastman
Ms. Elizabeth Eldridge
Peggy Elliott
Dan & Phyllis Epstein
Lisa Erburu & M. Cocalis
Cary & Robin Eskow
Mr. Jesse Fadick
Donald & Patricia Falkner
Mr. & Mrs. William E. Fark
Dr. Susan Dersnah Fee
Dr. Barry & Susan Fefferman
Mr. & Mrs. Robert Fei
Mr. & Mrs. Paul Ferraro
Richard & Donna Ferriter
Dr. & Mrs. Lawrence M. Fine
Mr. & Mrs. Bruce A. Fischer
Fred & Shirley Fisher
Dr. & Mrs. Paul Friedman
Dr. & Mrs. Richard Friedman
Hal & Pam Fuson
Albert & Anna Belle Gabbs
Bob & Deede Gales
Thomas & Robyn Geantil
Anne & John Gilchrist
Norman & Patricia Gillespie
Hubert F. Gordon, Trustee/
The San Diego Foundation/
Gordon Family Trust Fund
Howard L. Gottlieb
Ms. Euvoughn Greenan
Mr. Dennis Greenhill
Vivienne Griffin
Mr. George Guerra
Dr. A.T. Hagler &
Ms. Martha Obermeier
Deborah A. Hammond
Robert W. & Helen M. Hammond
Robert & Helen Hansen
Jay & Mary Hanson
George D. Hardy
Mr. & Mrs. James Harris
Maurice & Elynor Hart
Mr. & Mrs. Leo J. Havilan
Dr. & Mrs. Jerome L. Heard
Matthew Heintschel
Dr. & Mrs. William E. Hendrix
Dr. Charles & Joan Henkelmann
George Burke Hinman
Mr. & Mrs. Thomas O. Hipple
Mark & Lynn Hofflund
Paul & Anne Hofflund
Dr. & Mrs. John W. Holl
Mr. & Mrs. J. Leonard Holman
Peter D. Holt & Terry Usher Holt
Jean E. Holtz
Paul & Barbara Holz
Raymond W. Howard
Frederick M. Howden, M.D.
Susan D. Inot
Nancy & David James
Richard & Katherine Jarvis
In Memory of Donald Jenkins
Mr. & Mrs. William S. Johnston
Kenneth & Marilyn Jones
Drs. Irvin & Nancy Kaufman
Patricia & Alexander Kelley

Gerald A. Kelly/
The San Diego Foundation
Gerald A. Kelly Fund
Mr. & Mrs. Charles Kendall
Jennifer Kent
Patricia Kirk/Spin-Tek Systems
Mr. Phillip M. Klauber
Louis J. Knobbe
Jo Ann & Lee Knutson
Marvin Krichman & Franci Starr
Inger & Kai Kristensen
Betty & Richard Kuhn
Mr. & Mrs. Fritz Kuhn
John O. Lalas, Jr.
Dr. Eric Lasley
Lazzaro Construction
Wendy & Richard Ledford
Dr. & Mrs. Dixon A. Lee
Jim & Veronica Lee
Dick & Sonie Lennon
Susan E. & Ira L. Lerner
Tom & Terry Lewis
Mr. & Mrs. James Lim
Dr. Donald Lipkis & Ms. Arlene Pollard
Don & Mary Jane Lincoln
Sandy & Ernie Lippe, D.D.S.
Mr. Mark C. Lorenzo
Charles & Robin Luby
Howard R. & Charlotte B. Lund
Sally & Bill Luster
Coralee V. Mackey
Drs. Betty Joan Maly & John Meyers
Judge & Mrs. Frederick Mandabach
Cathie Marsh
Delza Martin
Mr. & Mrs. Richard F. Martin
Harold & Beverly Martyn
Cdr. & Mrs. John C. Mathews III
Chris Maxin &
Stephanie Buttell-Maxin
David McColl
James & Dorothy Mildice
Dr. Ronald H. Miller
Dr. & Mrs. Isaac Mizrahi
Gloria Moore
Myriad Software
Dr. & Mrs. James H. Nelson
Willene D. Nichols
Dr. & Mrs. Mike Nobil
Ray & Diane Nobis
Judge & Mrs. Paul Overton
Dr. Vic Pankey & Elena Pankey
Susan C. Parker
William & Sandra Peavey
Clifford T. Pentrack &
Mary E. Giovaniello
Mrs. Marion D. Perlman
Deborah Brooks Pettry
Marcia & Jim Piper
Poway Carpets
Bill & Judi Quiett
Anne F. Ratner
Jeffrey & Vivien Resstler
Stuart Robinson
Dr. & Mrs. David Roseman
Beatrice Rotzow
Julie & Don Roy

Norman & Barbara Rozansky
Mrs. John M. Rumsey
Mr. & Mrs. Don R. Russell
Frank Ruyak
Joseph & Carol Sabatini
George & Karen Sachs
Edward & Rae Samiljan
Linda J. Seifert
Jeffrey W. Selzer
In Memory of
Edward Silverstein
Dr. & Mrs. Alan Siman
Eunice M. Simmons, M.D.
Anne & Ronald Simon
Mr. & Mrs. Herbert M. Sinnen
Kathryn Slavin
Elbert & Maxine Smith
Dr. Timothy S. Smith
Ian Sokoloff
Mr. & Mrs. Fred C. Stalder
Kathleen Stephan
Sheila Stephan
Mr. & Mrs. James Lim
Mr. Edward Stickgold &
Mr. Steven Cande
Mr. & Mrs. Charles M. St. Laurent
Abbe & David Stutz
Mr. & Mrs. Ronald Styn
Mr. & Mrs. Raghu Sugavanam
Mrs. O. Patricia Sullivan
Coralee V. Mackey
Eric Leighton Swenson
Dr. Terry & Naomi Tanaka
Donald V. & Wynne Tartre
Dr. Marshall & Leila Taylor
Steven & Anoush Tencati
Betsy & Michael Thomas/
San Diego Postal Annex+
Ed & Barbara Thomas
Judge & Mrs. David R. Thompson
Dr. Richard Torchia &
Ms. Norinne McKinney
John & Kay Torell
Robert C. & McLesle W. Traylor
Rose Marie N. True
Mrs. C. Anne Turhollow
& Mr. Michael J. Perkins
Mr. & Mrs. Stan Ulrich
Ginny Unanue
Ann L. Walker
Mrs. Omar A. Walker
Kathy & Jim Waring
Mr. & Mrs. James D. Welterlen
Ross White
Michael & Penny Wilkes
Jerry R. Witt
Mr. & Mrs. John W. Witt
Perri Wittgrove
Kaye I. Wynne
Craig & Jennifer Zobelein
Vicky Zollweg & Michael Dumtaman
Allan & Beverly Zukor/
Allan Zukor Advertising Design

This list current as of June 10, 2002

To become a member, please contact Diane Addis at (619) 231-1941, x2305.

CORPORATE LEADERS

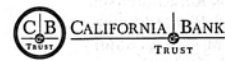
EXECUTIVE LEADERS

American Airlines*



Bank of America

BREAK-AWAY
Theatre Tours for Theatre People
Since 1971



Continental Airlines

Northern Trust

QUALCOMM*

SAKS FIFTH AVENUE

Sempra Energy™

Sheraton San Diego
HOTEL & MARINA

The San Diego
Union-Tribune



WELLS FARGO

LEADERS

A.T. Kearney Executive Search
Barney & Barney
Bertrand at Mister As
BRG Consulting
Cartier, La Jolla California
City National Bank
Cush Automotive
Charitable Foundation

De Anza Hotel & Park
Evans Hotels
Fifth & Hawthorn
FloraStyle
Gad Shaanan Design
Higgs, Fletcher & Mack, LLP
Home Box Office
ICON Systems, Inc.

KPMG
Latham & Watkins
Marsh, Inc.
Merrill Lynch
Mervyn's
Mission Federal Credit Union
Relocation Coordinates
San Diego National Bank

SBC/Pacific Bell
Stolper & Company
Investment Advisors
Target Stores
Time Warner Cable
TK&A Custom Catering
U.S. Bancorp Foundation
Viewpoint Investment Partners
Zurich Scudder Investments

Members of the Corporate Leaders enjoy exclusive benefits and recognition, especially the opportunity to entertain clients and employees with exclusive receptions in our Patron and Lipinsky Family Suites, behind-the-scenes tours, and preferred seating at our shows. For information, please contact John Alexander: (619) 231-1941, x2308 or by e-mail at JohnA@theglobetheatres.org.



The Globe Theatres is a member of the National Corporate Theatre Fund, a New York based, non-profit organization created to increase and strengthen support from the business community for eleven of this country's most distinguished professional theatres. Collectively, the following foundations, individuals and corporations support these theatres with contributions of \$1,000 or more to NCTF:

\$25,000 & ABOVE

Arthur Andersen
Citigroup
Ernst & Young
Quick & Reilly
Philip Morris
Companies Inc.
Praxis Media/Palace
Production
Center/Rabbit Ears
Entertainment
PricewaterhouseCoopers
Viacom Inc.

\$1,000 - \$4,999

Avon.com*
Colgate-Palmolive
Dramatists Play Service, Inc.
Gallo of Sonoma*
Horan Imaging Solutions*
Korn/Ferry International
Mark Twain House
Master Eagle*

*In-Kind Support

\$10,000 - \$24,999

America Online
Avaya
Bill Blass
CVS Corporation
Deloitte & Touche
EMC2 Corporation
Fleet Bank
FleetBoston Financial
GE Fund
Global Crossing
Financial Markets

INDIVIDUALS/FOUNDATIONS

Joel Alvord
Raymond A. &
Jacqueline Boyce
Fran & James E. Buckley
Samuel A. DiPiazza, Jr.
David H. Dreyfuss
The Rosalyn & Irwin Engleman
Philanthropic Fund
Jennifer P. Goodale
The William & Diana Romney
Gray Family Foundation

\$5,000 - \$9,999

ABC, Inc.
American Conservatory Theater
American Express
Bristol-Myers Squibb Company
HSBC Bank USA
The Interpublic Group of Companies
Lehman Brothers
Marsh & McLennan Companies, Inc.
Met Life Foundation
Newsweek
Pfizer Inc.
UBS PalneWebber Inc.
Vivendi Universal

Thomas C. Quick
David Rickard
Daryl Roth
Edward P. Seigenfeld
George & Pamela Smith
Robert N. Trombly
Evelyn Mack Truitt
James S. Turley
Sol J. Upbin

Members Make the Difference!

THE GLOBE REWARDS ITS MEMBERS WITH THE FOLLOWING EXCLUSIVE EVENTS, PRIVILEGES AND BENEFITS:

DONOR (\$60 - \$99)

- Subscription to *Upstage*, the Globe's quarterly newsletter
- 10% discount on Globe Gift Shop merchandise
- Complimentary ticket exchange*
- Invitation to the Annual Meeting of the Members
- Free admission to *Insights Seminars*
- Discounts at participating restaurants for pre- and post-theatre dining
- Free admission to scheduled group tours of the Globe

CONTRIBUTOR (\$100 - \$249)

- all Donor benefits, plus...
- Opportunity to purchase half-price tickets within 7 days of a performance*
- Eligibility to join Globe Guilders (please indicate request on response card)
- Discount on subscription to *American Theatre Magazine*

SPONSOR (\$250 - \$499)

- all Contributor benefits, plus...
- A full year of recognition in *Performing Arts Magazine*
- 20% discount on all single ticket purchases*
- Transaction charge waived on all single ticket purchases

PATRON (\$500 - \$999)

- all Sponsor benefits, plus...
- Priority upgrades on season subscriptions, upon request
- Two *Bard Card* vouchers, good for complimentary beverages at the Pub
- Two vouchers, good for a complimentary visit to the Globe's exclusive Lipinsky Family Suite
- Complimentary voucher for a CD of your choice from the Globe Gift Shop

THE CIRCLE PATRONS

The Circle Patrons are an exclusive group of Members who provide significant annual support by making gifts of \$1,000 or more. Circle Patron Membership includes the following additional benefits:

PREMIERE CIRCLE (\$1,000 - \$1,249)

- all Member benefits, plus...
- Complimentary access to the Globe's exclusive Lipinsky Family Suite
- Exclusive invitations to Circle Patron receptions and Artist lunches
- Complimentary Globe lapel pin
- Twelve *Bard Card* vouchers, good for complimentary beverages or desserts at the Pub

CRAIG NOEL CIRCLE (\$1,250 - \$2,499)

- all Premiere Circle benefits, plus...
- Personal, VIP ticket service to purchase or exchange tickets
- Complimentary invitation for two to a Circle Patron reception
- Gift voucher for two complimentary tickets
- Pre-performance backstage tour (upon request)

PLAYWRIGHT CIRCLE (\$2,500 - \$4,999)

- all Craig Noel Circle benefits, plus...
- Complimentary subscription for two to your choice of either the Winter or Festival Season
- A leather-bound edition of Shakespeare's collected works signed by Craig Noel (or Gift Shop publication of similar value upon request)

FOUNDER CIRCLE (\$5,000 - 7,499)

- all Playwright Circle benefits, plus...
- Additional complimentary subscription, for a total of two seats to both the Winter and Festival seasons

SILVER CIRCLE (\$7,500 - \$9,999)

- all Founder Circle benefits, plus...
- Complimentary valet parking for six productions (advance reservations required)
- An additional twelve *Bard Cards*, for a total of twenty-six vouchers

GOLD CIRCLE (\$10,000 - \$24,999)

- all Silver Circle benefits, plus...
- Additional complimentary valet parking privileges for a total of twelve productions
- Complimentary catered dinner for twelve in the Globe's Patron Suite, with VIP tickets to that evening's performance

DIAMOND CIRCLE (\$25,000)

- Many Individual and Corporate Members at the Diamond Circle choose to direct their support toward sponsorships of productions or specific education programs. Additional benefits for production sponsorship at this level include prominent recognition at The Globe Theatres, as well as many special VIP privileges.

*subject to ticket availability; this benefit does not apply to special engagements, holiday productions or VIP ticket service.

FOR MORE INFORMATION ABOUT MEMBERSHIP AT ANY LEVEL, PLEASE CONTACT THE GLOBE'S DEVELOPMENT DEPARTMENT AT (619) 231-1941, x2309

THE CRAIG NOEL LEAGUE *Securing the future through planned gifts.*



"I want this theatre to have the security of an endowment so that we may continue to engage and inspire audiences for generations to come."

— CRAIG NOEL

The Craig Noel League was established in November 2000 to build the endowment and secure the legacy Craig Noel and countless others fashioned for The Globe Theatres. The League honors those thoughtful friends who help to secure our future through a gift by will or trust. Please join us in thanking these very generous friends who are helping to build the Craig Noel League.

CRAIG NOEL LEAGUE MEMBERS

- | | | | |
|---|---|--|--|
| Anonymous (9)
Nancine Belfiore
Stanley Nadel &
Cecilia Carrick
Garet and Wendy Clark
J. Dallas &
Mary H. Clark
Patricia W. Crigler, Ph.D.,
CAPT/USN/Ret.
Mrs. Philip H. Dickinson
Dr. & Mrs. Robert Epsten
Marcy Goldstone
Kathryn Crippen Hattox | Barbara Iredale
Bob Jacobs
Joseph E. Jessop
J. Robert & Gladys H. King
Marilyn Kneeland
Jerry Lester Foundation
Dr. Bernard Lipinsky*
Heather Manion
Calvin Manning
Paul I. & Margaret W. Meyer
Judy & George Miller
Steve Miller
Shirley Mulcahy | Laurie Dale Munday
Arthur & Marilyn Neumann
Craig Noel
Greg & Polly Noel
Jack O'Brien
PACEM (Pacific Academy
of Ecclesiastical Music)
Mrs. Margaret F. Peninger
Plunkert*
Dolly & Jim Poet
Dorothy Shorb Prough
Donald & Darlene Shiley | B. Sy & Ruth Ann Silver
John & Cindy Sorensen
Marje Spear
Nancy A. Spector &
Alan R. Spector
Eric Leighton Swenson
Marian Trevor (Mrs. Walter M.)
Evelyn Mack Truitt
Harvey & Jordine
Von Wantoch
Sheryl & Harvey P. White
Mrs. Jack Galen Whitney
Julie Meier Wright
Carolyn Yorston |
|---|---|--|--|

*Deceased

list current as of June 10, 2002

CRAIG NOEL LEAGUE COMMITTEE

- | | | | |
|--|--|---|---|
| Sally Furay
Co-Chair
Carolyn Yorston
Co-Chair | J. Dallas Clark
Kathryn Hattox
Joe E. Jessop, Jr.
Judy Miller | Laurie D. Munday
Arthur H. Neumann
Dolly Poet | Ann Pund
Nancy A. Spector, Esq.
Evelyn Truitt |
|--|--|---|---|

CRAIG NOEL LEAGUE ADVISORY COUNCIL

- | | | | |
|--|--|---|--|
| David C. Anderson, Esq.
Luann C. Beberman
D. Stephen Boner | Frank A. Frye, III
Craig Gross
Jeremy K. Pearl | Nancy A. Spector, Esq.
Kristopher Storti | Harriet Avner Waanders
Ellen Whelan |
|--|--|---|--|

For more information about membership in the Craig Noel League, please contact the Planned Giving Department at (619) 231-1941.

ENDOWMENT GIFTS *Supporting the theatre in perpetuity.*

The Globe Theatres has received gifts, dedicated to the endowment, from many generous supporters over the years. These gifts, and the endowment they build, ensure the long-term health of the theatre by providing an ongoing source of income that will support the theatre in perpetuity. Just as past gifts to the endowment have helped to create the theatre and educational programs of today, continued support of the endowment will ensure a financially strong and artistically excellent Globe for tomorrow. Please join us in thanking these very special donors for their far-sighted support of The Globe Theatres.

- | | | |
|--|--|--|
| Anonymous (2)
John A. Berol
Joe A. Callaway*
Dr. David & Ava Carmichael
Maria Carrera
J. Dallas & Mary H. Clark
In Memory of Lowell Davies
Morey & Jeanne Feldman
and Family | The Globe Guilders
Jim & Betty Hempstead
Hollis Foundation
Mrs. Anna P. Lord
National Endowment
for the Arts
Stephen Nielander &
Dominique Alessio
Mrs. Margaret F. Peninger | Florence Borgeson Plunkert*
Jessie W. Polinsky*
Jeannie & Arthur Rivkin
San Diego Trust and Savings
Mr. & Mrs. Gene Trepte |
|--|--|--|

*Deceased



Photo: Ken Howard

For more information, please contact the Planned Giving Department at (619) 231-1941.

Ovation SOCIETY

The Ovation Society is an exclusive society recognizing those donors making multi-year commitments to fund the annual operations of the Globe through membership or sponsorship of programs, events and educational activities.

Ovation Society members receive enhanced recognition and benefits reflecting the cumulative amount of their commitment, including: a special listing in the Globe's Performing Arts Program, featured listing in the Upstage newsletter, and enhanced recognition as an underwriter or sponsor of programs and productions.

\$150,000 *(\$50,000 each year for three years)*

Recognition as a Series Sponsor each year
Season Sponsor benefits each year, including:

- Prominent listing as Season Sponsor on all theatre signage
 - Full-page sponsor recognition in the Globe's printed program
 - Feature article in Upstage, the Globe's quarterly newsletter
 - Private, pre-performance receptions for you and your guests
- Valet parking for all productions each year

\$75,000 *(\$25,000 each year for three years)*

Mainstage Production Sponsorship each year
Diamond Circle membership benefits each year, including:

- Full-page sponsor recognition in the Globe's printed program
 - Feature article in Upstage, the Globe's quarterly newsletter
 - Private, pre-performance receptions for you and your guests
- Valet parking for all productions each year

\$30,000 *(\$10,000 each year for three years)*

Mainstage Production Sponsorship for one year
Gold Circle membership benefits for each year, including:

- Private, pre-performance receptions for you and your guests
 - Listing in Performing Arts Magazine and in the Globe lobby
- Valet parking for all productions each year

\$15,000 *(\$5,000 each year for three years)*

Production sponsorship in the Carter for one year
Founder Circle membership benefits for each year, including:

- Complimentary subscription for two to the Winter and Summer Globe seasons
 - Invitation to the Annual Founders Dinner
- Valet parking for six productions each year

For more information on The Ovation Society, please contact Anita Dawson at (619) 231-1941, x2310.

The Advisory Council

The Globe Theatres is pleased to announce the creation of a new council of friends who will share their passion for the theatre, and, in turn, receive exclusive opportunities to build a closer relationship with the artists at the Globe. We cordially invite you to join us as Charter Members of The Advisory Council. Membership is open to individuals or couples making annual gifts of \$1,500 or greater.

Membership on The Advisory Council includes the following benefits:

- * Invitation to three Advisory Council events each year; each social event will give you a closer look at the inner workings of the theatre and a personal relationship with our actors, designers, directors and playwrights.
- * Special recognition in performance playbills; by Fall 2002, Advisory Council members will be recognized as a group on the board pages of Performing Arts Magazine, and listed as members of the Council within each of their membership categories.
- * Access to the Globe's VIP seats through a special theatre representative.
- * Access to the Lipinsky Family Suite to enjoy pre-show and intermission amenities, whenever you attend the theatre.
- * Exclusive invitations to Circle Patron events, including opening night dinners, artist lunches, and private receptions.
- * Priority upgrades on subscription seating.



We sincerely hope you will consider membership on The Advisory Council. The Globe will truly benefit from your input, involvement, and enthusiasm. For more information on The Advisory Council, please contact Brad BaHard, Associate Director of Development at (619) 231-1941, x2309 or email BradB@theglobetheatres.org.



Experience the San Francisco favorite here at South Coast Plaza. Enjoy the freshest seafood and the finest prime aged beef in a warm and inviting setting. Please join us before or after the show for dinner, cocktails or cappuccino and dessert. Complimentary valet parking.

Corner of Anton and Bristol
714/979-2400
www.seafood-primesteak.com

SCOTT'S
SEAFOOD
GRILL & BAR
*Serving The Finest
Seafood & Prime Steaks*

ASSOCIATE ARTISTS OF THE GLOBE THEATRES

In recognition of their unique contribution to the growth of the Globe Theatres and their special talent, we take great pride and pleasure in acknowledging as ASSOCIATE ARTISTS OF THE GLOBE, the following who have repeatedly demonstrated by their active presence on our stages and in our shops, that wherever else they may work, they remain the heart and soul of this theater.

Jack O'Brien
Artistic Director

Garet Clark
Interim Managing Director

Craig Noel
Executive Director

William Anton
Jacqueline Brookes
Lewis Brown
Kandis Chappell
George Deloy
Tim Donoghue
Richard Easton
Tovah Feldshuh
Ralph Funicello
Lillian Garrett-Groag
A.R. Gurney
Joseph Hardy
Mark Harelik

Bob James
Tom Lacy
Diana Maddox
Dakin Matthews
Deborah May
Katherine McGrath
John McLain
Jonathan McMurtry
Stephen Metcalfe
Robert Morgan
Steve Rankin
Marion Ross
Steven Rubin

Ken Ruta
Douglas W. Schmidt
Seret Scott
David F. Segal
Don Sparks
David Ogden Stiers
Conrad Susa
Deborah Taylor
Sada Thompson
Paxton Whitehead
James R. Winker
Robert Wojewodski

PATRON INFORMATION

TICKET SERVICES

Telephone: (619) 239-2255
Monday: 10:00 am - 6:00 pm
Tuesday - Saturday: 10:00 am - 8:30 pm
Sunday: Noon - 8:30 pm
Closed Holidays

To charge tickets to Visa, Discover, MasterCard, or American Express, phone (619) 239-2255 during the above hours. Phone orders are subject to a \$6.00 per order service charge. Ticket exchanges are subject to a service charge.

ADMINISTRATION

Telephone: (619) 231-1941
Monday-Friday: 9:00 am - 5:00 pm
P.O. Box 122171 San Diego, CA 92112-2171

PUBLIC TOURS

Go behind the scenes at The Globe Theatres to learn about the history, three stages, shops and crafts areas. Open tours: most Saturdays and Sundays at 10:30 a.m. Groups by reservation. \$3 adults; \$1 seniors and students. Phone (619) 231-1941 for information/reservations.

RESTROOMS AND PAY TELEPHONES

Restrooms are located in the lower lobby of the Old Globe Theatre and adjacent to the Festival Theatre; pay phones may also be found in the lower Globe lobby and next to the Gift Shop.

SEATING OF LATECOMERS

Although we understand parking is often at a premium, the seating of latecomers is extremely disruptive. Latecomers may be given alternative seating and will be seated at an appropriate interval.

YOUNG CHILDREN

Children under 5 years of age will not be admitted to performances.

ELECTRONIC DEVICES & CAMERAS

Use of recording devices and cameras is not permitted. If you are wearing a digital watch or pager, or if you are carrying a cellular phone, please silence it prior to entering the theater.

DIRECT EAR™ LISTENING SYSTEM

For the convenience of the hearing impaired, The Globe Theatres has installed the Direct Ear™ Listening System in the Old Globe Theatre. Lightweight headsets may be obtained from the house manager prior to performances. Direct Ear™ Listening System is provided courtesy of Sonus.

UNABLE TO ATTEND?

If you find you are unable to use your tickets, please give them to a friend or turn them in to the Box Office and receive a tax credit for your donation.

CHANGE OF ADDRESS

If you have moved, please notify the subscription office so records may be updated. Phone (619) 235-2250 during business hours or mail your change of address to the subscription office, The Globe Theatres, P.O. Box 122171, San Diego, CA 92112-2171.

The Globe Theatres is supported in part by grants from the City of San Diego Commission for Arts and Culture, the California Arts Council, and the County of San Diego; and is a constituent of the Theatre Communications Group and a member of the League of Resident Theatres and the San Diego Performing Arts League.

This theater operates under an agreement between the League of Resident Theatres and Actors' Equity Association, the union of professional actors and stage managers in the United States; and also under an agreement with the Society of Stage Directors and Choreographers (an independent, national labor union), and the International Alliance of Theatrical Stage Employees Local 122.

California



Arts Council

CITY OF SAN DIEGO
COMMISSION FOR
ARTS AND CULTURE



ENRICHING OUR LIVES



Performing Arts Magazine Cover
Photo Credit: Craig Schwartz

PROFILES



JACK O'BRIEN
Artistic Director

Recent Globe productions include *The Full Monty*, *The Seagull*, *The Magic Fire*, *How the Grinch Stole Christmas!*, the world premieres of

Associate Artist A.R. Gurney's *Labor Day* and Tina Howe's *Pride's Crossing*, as well as *Time and Again*, *The Doctor Is Out (Getting Away With Murder)* by Stephen Sondheim and George Furth, plus productions of *Henry IV*, *Much Ado About Nothing*, *Oleanna*, *Damn Yankees*, *King Lear*, *Ghosts*, *Hamlet*, *Uncle Vanya*, and world premieres of Terrence McNally's *Up in Saratoga*, A.R. Gurney's *The Snow Ball* and *The Cocktail Hour*, Tom Dulack's *Breaking Legs*, Stephen Metcalfe's *Emily*. ELSEWHERE: *The Invention of Love* (Tony nominations, best director and play), Lyceum, Lincoln Center Theater, *The Full Monty* (Tony nominations, best director and musical), Eugene O'Neill Theatre; *More to Love*; *Labor Day*, Manhattan Theatre Club; *St. Louis Woman*, City Center Encores!; *Pride's Crossing*, *The Little Foxes*, *Hapgood* (Lucille Lortel Award for Direction, 1995), Lincoln Center; *Damn Yankees* (Tony nomination, best musical revival) and *Two Shakespearean Actors* (Tony nominations, best director and play) on Broadway; *Porgy and Bess* for Houston Grand Opera and Broadway (Tony Award), as well as Radio City Music Hall; *The Magic Flute*, San Francisco Opera; *Tosca*, Santa Fe Opera; *Così fan Tutte* and *Aida*, Houston Grand Opera; *The Most Happy Fella*, Michigan Opera and Broadway. TV: *An Enemy of the People*, *All My Sons*, *I Never Sang for My Father*, *Painting Churches*, and *The Skin of Our Teeth*, all for PBS' *American Playhouse*. Mr. O'Brien is the recipient of the Drama League's Julia Hansen Award for Excellence in Directing, 2001. Member, College of Fellows of the American Theatre; Honorary Doctor of Humane Letters, University of San Diego.



CRAIG NOEL
Executive Director

Was first appointed director in 1939, directing 15 productions prior to World War II. Since then has directed more than 220 plays of all

styles and periods, and produced more than 365 directed by others. His vision for the Globe during the past 50 years resulted in the establishment of the Shakespeare Festival in the late '40s, expansion to two theaters in the '50s, Globe Educational Tours in the '70s and Teatro Meta in the '80s. Among his recent directorial assignments were *Over the River and Through the Woods*, *Scotland Road*, *Springtime for Henry*, *Travels with My Aunt*, *Voir Dire*, *Mister Roberts*, *Time of My Life*, *Wonderful Tennessee*, *Mr. A's Amazing Maze Plays*, *The King of the Kosher Grocers*, *Morning's at Seven*, *The White Rose*, *Shirley Valentine*, *And a Nightingale Sang*, *The School for Scandal*, *The Road to Mecca*, *Love's Labour's Lost*, *The Boiler Room*, *The Night of the Iguana*, and *Intimate Exchanges*. ELSEWHERE: During the 1940s, dialogue director, 20th Century Fox Studios; former director, Ernie Pyle Theatre, Tokyo. Honors include the Governor's Award for the Arts; the mayoral proclamation of "The Year of Craig Noel" (1987) in San Diego; inclusion in *The San Diego Union's* list of 25 persons who shaped San Diego; 1985 Outstanding Alumnus of the Year, SDSU; Honorary Doctor of Humane Letters, University of San Diego; San Diego Gentleman of Distinction Award; San Diego Press Club Headliner Award; a combined tribute from the Public Arts Advisory Council and San Diego County Board of Supervisors; the mayor's Living Treasure Award; Member, College of Fellows of the American Theatre.

The Globe Theatres Staff

Jack O'Brien
Artistic Director

Garet Clark
Interim Managing Director

Craig Noel
Executive Director

ADMINISTRATION

Executive Assistant.....June Andujar

ARTISTIC

Associate Artistic Director.....Karen Carpenter
Associate Director/Casting.....Brendon Fox
Literary Associate.....Raúl Moncada
Associate Designer.....David Ledinger
Executive Assistant.....Lorraine Boyd
Company Manager.....Ellen Dieter
Dramaturgy Associate.....Diane Snor

PROFESSIONAL TRAINING

Director.....Richard Seer
Voice/Speech.....Jan Gist
Program Coordinator.....Llance Bower

EDUCATION

Manager.....Patti Saraniero
Education Coordinator.....Lynn F. Evans
Tour Coordinator.....Holly Ward
Speakers Bureau Coordinator.....Carol Green
Teaching Artists.....Peter Cirino,
Donna Marie Cory, Jeff Hirsch,
Patrick McBride, Lucas Caleb Rooney,
Ken Weitzman

HUMAN RESOURCES

Interim Manager.....Cathy Zumberge
Payroll Coordinator.....Karl Shapiro

BUSINESS

Director.....Ron Kolenc
Receptionist.....Lynn Dougherty

Finance

Accounting Supervisor.....Rita Edenfield
Accounting Assistant.....Sherrie Johnson
Accounting Assistant.....Diane Jenkins

Information Systems

Manager.....Dean Yager
Assistant.....Thad Steffen

Maintenance

Building Manager.....Sean La Motte
Staff.....Violanda Corona, Ismael Delgado,
Humberto Elvira, David Gaspar,
Roberto Gonzalez, Margarita Meza,
Jose Morales, Maria Rios

DEVELOPMENT

Director.....Anita Dawson
Associate Director, Corporations.....John Alexander
Associate Director, Individuals.....Brad Ballard
Associate Director, Foundations.....Ann Marie Houghtailing
Events Manager.....Elisabeth Loeffler
Membership Administrator.....Diane Addis
Grants Coordinator.....Robert Ford
Development Assistant.....Carolyn Reid

Donor Services

Lipinsky Suite Concierges.....Stephen Serieka,
Andy Stamets
V.I.P. Valet Attendants.....Jose Garcia,
Brett Young, Ian McElreath

PRODUCTION

Director.....Robert Drake
Associate Director.....Debra Pratt Ballard
Production Coordinator.....Jan Burgoyne

Stage Management

Coordinating Stage Manager.....Joel Rosen
Stage Managers.....D. Adams, Raúl Moncada
Assistant Stage Managers.....Caren Heintzelman,
Tracy Skoczelas
Crossover Stage Manager.....Suzanne Lucas

Technical

Director.....Benjamin Thoron
Associate Director.....Christopher Morris
Shop Foreman/Master Carpenter.....Christopher Thorsen
Master Carpenter, Festival Theatre.....Bob Dougherty
Flyman, Stage Carpenter, Globe.....Jim Masacek
Carpenters.....David Berzansky, Mike Callaway,
Serge Goutas, Andrew Gilchel,
Malcolm Knapp, Jeremiah Aldrich-Lutz,
Jim Hooper, Tom Nikitas,
Rogelio Rosales
Charge Carpenter, Carter.....Nick Fouch
Charge Scenic Artist.....Danny Griego
Assistant Scenic Artist.....Edee Armand, Ken Scar
Scenic Artist.....Marcella Lucenti, Joan Newhouse,
Allison Pokladowski, Wendy Stymerski, Nicki Sucec
Technical Assistant/Buyer.....Liz Eisele

Costumes

Director.....Stacy Sutton
Resident Design Assistant.....Charlotte Devaux Shields
Assistant to the Director.....Jennifer Hanson
Dyer/Painter.....K. Glee Brandon
Lead Craft Person.....Linda Black
Design Assistant.....Shelly Williams
Design Assistant/Shopper.....Cindy Kinnard
Drapers.....Maggie Frede, Louise M. Herman,
Marsha Kullgowski, Chris Moad, Randal Sumabat
Assistant Cutters.....Gloria Bradford, Su-Lin Chen,
Gwen Dunham, Anne Glidden Grace,
Susan Sachs, Megan Short
Costume Assistant.....Mary Miller
Stitchers.....Yvonne Alunni, Katherine Asmus,
Babs Behling, Mariah Bowers, Erin Cass,
Sandra Deakins, Lee Ann Donan, Rachel Hill,
Margo Selensky, Samya Serougi,
Maureen Strauss, Sarah Wiley
Craft Artisans.....Dean Cameron,
Becky Hanson, Paula Johnson,
Becke Shulman
Wig & Makeup Supervisor.....Molly O'Connor
Assistant Wig & Makeup Supervisor.....Kathleen Kurz
Wig & Makeup Assistant.....Maren Castanada
Head Dresser.....Beverly Boyd
Wigs Running Crew.....Lisa Chan, Karen Batul
Dresser, Globe Stage.....Tim Hooper
Carter Crew Chief.....Angela Miller
Festival Crew Chief.....Michael Dondanville
Festival Dressers.....Leshia Sand
Rental Assistant.....Angela Land

Properties

Director.....Neil A. Holmes
Shop Foreman.....M.H. Schrenkeisen
Lead Craftsman.....Rory Murphy
Buyer.....Troy Vaden
Craftspersons.....Raphael Acosta, Ryan Buckalew,
Trish Rutter, Kristin Steva
Property Master, Globe.....Pat Cain
Property Master, Carter.....Kristine Hummel-Rosen
Property Master, Festival.....Trevor Hay
Properties Assistant.....Jennifer G. Brawn Gittings

Lighting

Director.....David Lee Cuthbert
Assistant Director.....Kurt Doemelt
Master Electrician, Globe.....Tonnie Ficken/Thane Greene
Master Electrician, Carter.....Jim Dodd
Master Electrician, Festival.....Kevin Liddell
Electricians.....Randy Anetsky, Jason Bieber,
Eric Bidwell, Craig Dettman, Ryan Jordan,
Mike Gibbon, Charlotte Greenblatt, Josh Klem,
Fred Holt, Andy Lowe, Megan Lujan, Brian Marz,
Leah Nellman, Kathryn Roundtree,
Mira Suddath, Wendy Werner

Sound

Director.....Paul Peterson
Master Sound Technician, Globe.....Erik Carstensen
Master Sound Technician, Carter.....Megan Lujan
Master Sound Technician, Festival.....Jeremy Nelson
Mic Mixer, Festival.....Avis Smith

Security/Parking Services

Supervisor.....Rachel "Beahr" Garcia
Officers.....Ed Byrd, Rob Byrd,
Irene Herrig
Parking Attendants.....Roberto Almaquer,
Deborah Elliot, Benalah Koskovich,
Cindy Reynolds, Nelly Ruiz

MARKETING

Director.....Nancy Higgins
Associate Director.....Michael Rennie
Public Relations Manager.....Becky Biegeisen
Marketing Coordinator.....Jessica Brodtkin
Production Photographer.....Ken Jacques

Ticket Services

Associate Director of Sales.....Shamayne Hakim
Assistant Managers.....Tim Cole, Shannon Gleeson
Group Sales Assistant Manager.....Marissa Canales
VIP Ticketing Specialist.....Amy Bristol
Lead Subscription Specialist.....Lisa Starace
Patron Services Representative.....Tommy Thompson
Staff.....Abbie Bundy, Kathleen Chen,
Deborah Dimery, John Donlon,
Robert Fridenberg, Mamie Gile,
Douglas Henderson, Lindsey Little,
Mary Jan Livensparger, Jean McKissick,
Cynthia Milligan, Stephanie Parks,
Stephen Serieka, Diana Sparta,
Charmaine Taylor

Direct Sales/Telefunding

Assistant Manager.....Steven Kang
Shift Supervisors.....Dennis Dickens, Vaughn Rainwater
Staff.....Johanna Blackman, Stephen Cooke,
Wassem Kachi, Jessica Morrow,
Samer Naoum, Maurice Samuels,
J.D. Smith, Esther Sundel

Patron Services

Front of House Coordinator.....Anne Thacker
House Managers.....Jay Maness, Paul West,
Joshua Switzer
Food & Beverage Manager.....Dana Juhl
Pub Assistant Managers.....Roland Roberge,
Nicola Roberts
Pub Staff.....Brenda Almaquer,
Rosemarie Brenneman, Libby Campbell
Gift Shop Manager.....Christopher Jorgenson
Gift Shop Supervisor.....Rose Espiritu

thinking outside the lawyer

This is not your typical liberal arts college. This is something profoundly different. Beyond a superior academic curriculum and small classes with outstanding professors, at Westmont you'll have remarkable opportunities to open your mind, deepen your Christian faith, and broaden your horizons.

This is not your typical campus. Situated between the ocean and mountains on 111 acres of pine, eucalyptus and lush gardens, it is a sanctuary. This is a place where students become more than lawyers and CEOs; they become whole people.

From here, you can see the world.

800.777.9011
www.westmont.edu

Westmont College
Santa Barbara, California
A nationally ranked liberal arts college

Megan
Shrader, '02
Pre-Law
Student



WESTMONT

Intellect and Integrity

